

JIM'S C&S

Hilldale Shopping Center
702 N. Midvale Blvd. B-2
Madison, WI 53705
(608) 233-2118

www.jimscoins.com



20 1976-D BICENT PERFECT MATED PAIR!

NO.61

**MAIL BID SALE #J-61
CLOSES FEBRUARY 2, 2014**

- 1) **SEND ALL BIDS TO: JIM'S COINS, 702 N. MIDVALE BLVD. B-2, MADISON, WI 53705, OR FAX #608-233-0175, OR PHONE 608-233-2118, OR EMAIL: jimcoins@sbcglobe.net**
- 2) **THE HIGHEST BIDDER ACKNOWLEDGED BY THE AUCTIONEER SHALL BE THE BUYER. THE AUCTIONEER RESERVES THE RIGHT TO REJECT ANY BID OR WITHDRAW ANY LOT FROM THE SALE. BIDDERS ARE RESPONSIBLE FOR THEIR OWN ERRORS, SO DOUBLE CHECK YOUR BIDS. THE FIRST POSTMARK WINS IN CASE OF A TIE BID.**
- 3) **ALL SALES ARE FOR CASH AND ARE PAYABLE IMMEDIATELY UPON RECEIPT OF THE INVOICE.**
- 4) **AUCTIONS ARE OPEN TO ALL AND NO DEPOSIT IS REQUIRED OR DESIRED.**
- 5) **NO UNLIMITED BIDS ARE ACCEPTED. WINNING BIDDERS WILL BE AWARDED LOT AT A 10% ADVANCE OVER THE SECOND HIGHEST BID. IF NO OTHER BIDS ARE RECEIVED FOR A LOT, THE BIDDER WILL BE AWARDED THE LOT AT THE MINIMUM BID, OR ESTIMATE IF NO MINIMUM IS GIVEN.**
- 6) **ALL ITEMS ARE GUARANTEED GENUINE. BIDDERS MAY RETURN ANY ITEM NOT AS DESCRIBED.**
- 7) **A \$1 HANDLING CHARGE WILL BE ADDED TO ALL WINNING INVOICES. BID EARLY AND BID OFTEN. THANKS! - LEN & JIM**

* 1	1799	DOLL	FULL STRONG SPLIT DIE REV 9:00 TO 3:00 LOOKS FN15 KINDA LIKE 50% RETAINED CUD. COIN CONDITION LOOKS NICER THAN ANACS DESC, REPAIRED, SCRTCH, CLND ANACS	MB	\$1,450.00
2	1878	DOLL	7 TAIL FEATHERS, VAM-31, LINES THROUGH LEG ANACS	MS62 MB	\$95.00
3	N.D.	DOLL	TYPE 1 C-N IKE BLANK PLANCHET PCI	MS63 MB	\$99.00
4	N.D.	DOLL	TYPE I I, COMMERATIVE SILVER DOLLAR, 37.5 DIA, WEIGHS 26.73 GRAMS ANACS	MS60 MB	\$125.00
5	1983 P	DOLL	OLYMPIC DISC THROWER, SLIGHT PARTIAL COLLAR REVERSE PCGS	MS68 MB	\$135.00
* 6	1979 P	DOLL	SBA, 2 LARGE CUD DIE BREAKS 2:00 AND 5:00 OBV PLUS 2 MORE RIM CUDS AND NUMEROUS DIE CRACKS WOW! A\$-79P-2B PCGS	MS62 MB	\$1,200.00
* 7	1979 P	DOLL	SBA, LARGE CUD DIE BREAK OBVERSE 5:00 AND TINY RIM CUD 8:00 EARLIER DIE STATE TO ABOVE A\$-79P-2A PCGS	MS64 MB	\$600.00
* 8	1979 S	DOLL	SBA, BROADSTRUCK ON 33% STRAIGHT CLIPPED PLANCHET VERY EYE CATCHING PCGS	MS65 MB	\$810.00
* 9	1979 D	DOLL	SBA, STRUCK ON A QUARTER PLANCHET PCGS	MS61 MB	\$675.00
10	2009 P	DOLL	NATIVE AMERICAN, EDGE LETTERING BLANK EXCEPT FOR 5 STARS WEIRD ANACS	MS66 MB	\$105.00
11	(2010)	DOLL	BLANK PLANCHET TYPE 2 U.S. MINT SAC/PRES DOLLAR PCGS	MS62 MB	\$55.00
12	(2010)	DOLL	SAME AS ABOVE PCGS	MS62 MB	\$55.00
13	1954	HALF	"BUGS BUNNY" FS-401 PCGS FULL BELL LINES	MS65 MB	\$350.00
14	1858	QUAR	PARTIAL COLLAR NGC	XF45 MB	\$525.00
15	1967	QUAR	RARE SPEC MINT SET, PARTIAL COLLAR ON STRAIGHT CLIPPED PLANCHET (1:30 TO 9:00) 3.7 GRAMS NGC	MS63 MB	\$289.00
* 16	1960 D	QUAR	PARTIAL STRUCK THRU CLOTH OBV 6:00 TO 10:30 NGC	MS53 MB	\$525.00
* 17	1970 D	QUAR	DEFECTIVE OBVERSE CLAD LAYER (9:0 TO CENTER TO 12:00) 5.3 GRAMS NGC	MS64 MB	\$175.00
* 18	1965	QUAR	DIE ADJUSTMENT STRIKE NICE EXAMPLE ANACS	AU58 MB	\$75.00

19	1950 D	QUAR	D OVER S MINT MARK ANACS	VF30	MB	\$75.00	
*	20	1976	QUAR	UNIQUE MATED PAIR! COIN #1 PART COLLAR WITH OBVERSE BROCKAGE MS62, #2 DOUBLE STRUCK 2ND 90% OFF CENTER BU WITH SCR REV. BOTH NGC SLABBED	MS62	MB	\$1,600.00
	21	1961	QUAR	TYPE 2 "PROOF" REVERSE FS-901, REV HUB DESIGN ANACS	MS63	MB	\$32.00
	22	1959	QUAR	TYPE B REVERSEFS-901 "PROOF" REVERSE HUB DESIGN ANACS	MS63	MB	\$31.00
	23	1958	QUAR	TYPE B REVERSE FS-901 "PROOF" REVERSE HUB DESIGN ANACS	MS63	MB	\$32.50
	24	1999 P	QUAR	NEW JERSEY, DOUBLE STRUCK 2ND 75% OFF CENTER UNIFACE REVERSE NGC	MS64	MB	\$276.00
	25	2000	QUAR	NEW HAMP, 55% OFF CENTER 4:00 NGC	MS65	MB	\$232.00
	26	2002 D	QUAR	MISSISSIPPI, STRUCK ON AN ELLIPTICAL PLANCHET PCGS	MS64	MB	\$175.00
	27	2000 D	QUAR	S. CAROLINA, MISSING REVERSE CLAD LAYER WEIGHT 4.0 GRAMS ANACS	AU55	MB	\$135.00
	28	1999	QUAR	CONN, 17% OF 3 CLIPS BROADSTRUCK ON TYPE 1 AU58 PLANCHET PCGS	AU58	MB	\$210.00
	29	1944 D	DIME	60% CLAMSHELL SPLIT PLANCHET, DRAMATIC LIKE GAPPING MOUTH PCGS	AU58	MB	\$295.00
	30	1950 S	DIME	OVER MINT MARK FS-501, S OVER D PCGS	MS64	MB	\$195.00
*	31	N.D.	CENT	CENT DOUBLE STRUCK 90% OFF CENTER ON 90% SILVER DIME PLANCHET NEAT MULTI ERROR! PCGS	MS62	MB	\$1,600.00
	32	1953 S	DIME	LARGE UNCENTERED BROADSTRIKE LOOKS OFF CENTER TOUGH DATE! NGC	MS63	MB	\$115.00
*	33	N.D.	DIME	23% VERY RAGGED CLIPPED PLANCHET ON TYPE 1 SILVER PLANCHET PCGS	MS61	MB	\$130.00
*	34	N.D.	NICK	JEFFERSON STRUCK 98% OFF CENTER ON CHOPPED BOWTIE SCRAP .81 GRAM NGC	MS65	MB	\$550.00
*	35	1979 D	NICK	DOUBLE STRUCK 90% INDENT 2ND STRIKE, LARGER THAN SBA DOLLAR GIGANTIC EXPANDED JEFFERSON'S HEAD PCGS	MS66	MB	\$600.00
*	36	N.D.	NICK	OBVERSE STRUCK WITH SPLIT CAPPED DIE + CUD AT 10:00 NEAT NGC	MS63	MB	\$195.00
	37	N.D.	NICK	STRUCK ON ZINC CENT PLANCHET, RARER ON ZINC PCGS	XF40	MB	\$185.00
	38	N.D.	NICK	STRUCK ON A 1 CENT PLANCHET, 3.07 GRAMS ICG	AU55	MB	\$165.00
*	39	2004 P	NICK	IMPROPERLY ANNEALED, NEAT BRIGHT RED & LAMINATING NGC	MS66	MB	\$95.00
	40	1994 P	NICK	MATTE FINISH WITH PARTIAL COLLAR 6 STEPS ANACS	MS64	MB	\$85.00
	41	1952 S	NICK	RPM-002 PCI	VF30	MB	\$10.00
	42	1972 D	NICK	COLLAR DIE BREAK 7-12:00 NEW ENGLAND COLLECTION NGC FULL STEPS	MS63	MB	\$115.00
	43	2000	CENT	STRUCK ON A 2000 P DIME, DOUBLE DENOMINATION NGC	MS68	MB	\$1,050.00
	44	1968 D	CENT	STRUCK ON A DIME BLANK WEIGHT 2.23 GRAMS ANACS	AU50	MB	\$215.00
	45	1970 S	CENT	STRUCK ON A CLAD DIME PLANCHET, RARE S MINT ONLY 2 KNOWN LUSTEROUS PCGS	MS61	MB	\$825.00
	46	2002 D	CENT	BROADSTRUCK RARE DATE ANACS RED	MS63	MB	\$37.00
*	47	2001	CENT	BROADSTRUCK, STRUCK THRU WIRE, LOOKS LIKE 40% INCOMPLETE CLIP REVERSE ANACS RED	MS64	MB	\$60.00
*	48	1975 D	CENT	STRUCK THRU PARTIAL BROCKAGE SEGS	MS63	MB	\$32.00
*	49	N.D.	CENT	OBVERSE 100% STRUCK THRU CLOTH VIOLET TONE NEAT EXAMPLE NGC BROWN	MS62	MB	\$395.00

50	1995	CENT	DOUBLED DIE OBVERSE DIE 2 ANACS RED VERY RARE DIE 2	MS66	MB	\$230.00
*	51	N.D.	CENT 50% OFF CENTER ON TRIPLE CURVED CLIP PLANCHET PNG RED/BRN	MS65	MB	\$225.00
	52	1944	CENT STRUCK 3% OFF CENTER PCGS RED/BROWN	MS63	MB	\$49.00
	53	1973 D	CENT COLLAR CUD 6:00 TO 11:30 RARE TYPE PCGS RED/BRN	MS64	MB	\$135.00
	54	1959 D	CENT EXTRA D INSIDE 2ND 9 ANACS RED	MS65	MB	\$95.00
*	55	1998	CENT OBVERSE DIE CAP NGC RED	MS66	MB	\$499.00
*	56	965	DOLL CANADA, STRUCK ON AN INCOMPLETE CURVED CLIP PLANCHET, SMALL BEADS, POINTED 5 NGC	MS63	MB	\$475.00
	57	1969 D	HALF 5% STRAIGHT CLIPPED 6:30 STILL IN MINT CELLO COMPLETE D SET	MS63	MB	\$55.00
	58	1966	OTHER SPECIAL MINT SET AS ISSUED, DOUBLED DIE HALF	MS65	MB	\$55.00
	59	1978	NICK NICKEL ON CENT PLANCHET WITH OLD ANACS PAPER CERTIFICATE FROM 1982	UNC	MB	\$230.00
*	60	N.D.	OTHER C..O.P.E. EXPERIMENTAL TEST NOTE PURE WHITE WITH JUST SERIAL NUMBERS PCGS VERY CHOICE NEW	CU64	MB	\$395.00
*	61	1977	\$50 FEDERAL RESERVE NOTE (F.R.N.) 90 DEGREE FOLD AT CENTER PART NEXT NOTE NUMBER & SEAL SEE PHOTO PCGS VERY PPQ	VF25	MB	\$600.00
*	62	1934 A	\$20 F.R.N., HAWAII WW 2, RARE GUTTER FOLD REVERSE LOWER LEFT CORNER	AU58	MB	\$395.00
*	63	1999	\$20 F.R.N. OBVERSE SEALS & SERIAL NUMBERS SHIHTED LEFT, UPPER LEFT # PART OFF NOTE	AU58	MB	\$395.00
*	64	1974	\$10 F.R.N. VERY UNUSUAL PROGRESSION OFFSET REVERSE ON OBVERSE STUDY GROUP GEM	CU65	MB	\$960.00
*	65	1981	\$5 F.R.N. STRONG OFFSET OBVERSE ON REVERSE PMG CHOICE	VF35	MB	\$275.00
*	66	1977 A	\$5 F.R.N. LARGE BROAD BREAKS OBVERSE	AU	MB	\$110.00
*	67	1917	\$1 LEGAL TENDER NOTE, LARGE SIZE, WITH CURVED GUTTER FOLD OBV & REV PMG	VF25	MB	\$395.00
*	68	1935 A	\$1 SILVER CERT, HAWAII WW 2, SHIFTED SEAL & SERIAL NUMBERS RIGHT	FIN	MB	\$95.00
*	69	935 D	\$1 SILVER CERT, PRINTED FOLD OVER UPPER RIGHT CORNER PART 3RD PRINT SOME ON REV RED REJECT STICKER FRONT PCGS PQ	VC64	MB	\$1,450.00
*	70	1935 E	\$1 SILVER CERT, WHITE GUTTER FOLD TOP TO BOTTOM RIGHT END THRU SEAL	FIN	MB	\$35.00
*	71	1969 C	\$1 F.R.N. FOLD OVER LEFT END WITH PART OF SEAL & NUMBER ON REVERSE	CU	MB	\$395.00
*	72	1935 E	\$1 SILVER CERT. MISALIGNED OBV & REV PRINTING	VF	MB	\$55.00
*	73	2009	\$1 F.R.N. SEALS & SERIAL NUMBERS ON BACK	VF	MB	\$235.00
*	74	1977	\$1 F.R.N. MEDIUM OFFSET REVERSE ON OBVERSE	CU	MB	\$110.00
*	75	1974	\$1 F.R.N. BLACK SMEAR OVER PORTRAIT CENTER TOP TO BOTTOM	AU	MB	\$65.00
*	76	1963 B	\$1 F.R.N. DARK GREEN SMEAR TOP TO BOTTOM REVERSE LEFT END	CU	MB	\$65.00
*	77	1977	\$1 F.R.N. 3RD PRINT SHIFTED RIGHT 1/4 INCH	CU	MB	\$60.00
*	78	1981	\$1 F.R.N. 3rd PRINT SHIFTED LEFT 3/8 INCH	FIN	MB	\$50.00
*	79	1981	\$1 F.R.N. 3rd PRINT SHIFTED LEFT TOP NUMBER ONTO PORTRAIT DESIGN EDGE	CU	MB	\$75.00
	80	1969	\$1 F.R.N. MISMATCHED SERIAL NUMBERS F 689/ F 679	VF	MB	\$310.00

81	2007	OTHER SINGAPORE WITH WRONG SECURITY STRIP	GEM	MB	\$25.00
82	1999	QUAR CT, STRUCK ON ALUMINUM FEEDER FINGER FRAGMENT, 2 PIECES THAT FIT TOGETHER PERFECTLY 0.18 GRAMS	BU	MB	\$350.00
83	1921 S	DOLL UNCENTERED BROADSTRIKE TOUCH OF PARTIAL COLLAR	EF	MB	\$295.00
84	1883 O	DOLL MISALIGNED DIE OBVERSE	EF	MB	\$32.00
85	1887	DOLL OBVERSE STRUCK THRU GREASE + 10 DETGREE ROTATED REVERSE	BU	MB	\$55.00
86	1885 O	DOLL REVERSE STRUCK THRU "BELLY BUTTON" CLEANED	AU	MB	\$39.00
87	1899 O	DOLL MICRO O MINT MARK	CHEF	MB	\$86.00
88	1900 O	DOLL STRONG O OVER CC MINT MARK CLEANED	EF	MB	\$65.00
89	1882 O	DOLL O OVER S MINT MARK, VAM 3 ORIGINAL TONING	CHAU	MB	\$99.00
90	1897 O	DOLL VAM 6A CLEANED	AU	MB	\$55.00
91	1878	DOLL 8 TAIL FEATHERS VAM 8 OUT OF OLD ANACS HOLDER ANACS TAG INCLUDED	AU	MB	\$69.00
92	1878	DOLL 8 TAIL FEATHERS VAM 8 "HOT 50" STICK FEATHER	VF30	MB	\$37.00
93	1878	DOLL 7 TAIL FEATHERS VAM 117 TRIPLED DIE OBV STRONGLY TRIPLE STAR	FIN	MB	\$55.00
94	1889	DOLL RIM CUDS 3:00 TO 6:00	BU	MB	\$48.00
95	1922	DOLL 2mm X 6mm STRUCK THRU OBVERSE 10:00	AU	MB	\$39.00
* 96	1923	DOLL LARGE 10x22mm ROLLED IN SLAG OBVERSE	MS60	MB	\$55.00
97	1923	DOLL VAM 2 DOUBLED DIE OBVERSE, OBV RIM BUMP	AU50	MB	\$30.00
* 98	1922	DOLL NICE RIM CLIP AT 12:30	UNC	MB	\$36.00
99	1922	DOLL RIM CLIP AT 10:30	EF	MB	\$46.00
100	1926	DOLL 1/4 INCH CRACK THRU PLANCHET 1:00	AU	MB	\$85.00
101	1972 D	DOLL BROADSTRUCK NICE WITH PARTIAL COLLAR RIM DING 3:30	BU	MB	\$123.00
*					
* 102	1972 D	DOLL NICE MISALIGNED OBVERSE DIE	UNC	MB	\$53.00
* 103	1972	DOLL 5% CURVED CLIP 8:00 TYPE 3 REVERSE	BU	MB	\$22.00
104	1972	DOLL NICE SMALL LAMINATION FLAP 2:30	UNC	MB	\$46.00
* 105	1976 D	DOLL 10% PARTIAL BROCKAGE AT 12:00 TYPE 2	UNC	MB	\$360.00
106	1999 P	DOLL SBA, BROADSTRUCK ON A TYPE 1 PLANCHET	BU	MB	\$130.00
* 107	1979 P	DOLL SBA, VERY LARGFE UNCENTERED BROADSTRIKE	BU	MB	\$69.00
108	1979 P	DOLL SBA, UNCENTERED BROADSTRIKE, SCRATCH OBVERSE	UNC	MB	\$70.00
109	1999 D	DOLL SBA, 15% CURVED CLIP 10:00	UNC	MB	\$53.00
110	N.D.	DOLL SAC OR PRESIDENT WEBBING SCRAP	BU	MB	\$12.50
111	2001 P	DOLL SAC, OBVERSE CLADDING SPLITTING OFF AT 5:00	UNC	MB	\$12.00
112	2009	DOLL TAYLOR, DROPPED "185" ON EDGE	BU	MB	\$25.00
113	N.D.	HALF 90% SILVER TYPE 2 PLANCHET	UNC	MB	\$75.00
114	N.D.	HALF 40% SILVER TYPE 2 PLANCHET	UNC	MB	\$158.00
115	N.D.	HALF CLAD TYPE 2 PLANCHET	UNC	MB	\$60.00
116	1837	HALF CUD REVERSE AT 11:00	VF	MB	\$125.00
117	1941 S	HALF S OVER S RPM	EF	MB	\$39.00
118	1942 D	HALF SO CALLED D OVER S MINT MARK, PLATE COIN FOR OLD SHERRY PICKERS GUIDE	AU	MB	\$395.00
119	19(44)	HALF STRUCK THRU OVER DATE	EF	MB	\$14.00
120	1942	HALF STRONG DOUBLED DIE REVERSE FS-801	AU	MB	\$65.00
121	1963 D	HALF 2% CLIP AT 11:00	EF	MB	\$15.00
122	1955	HALF BUGS BUNNY DIE CLASH	AU	MB	\$16.00
123	1964	HALF ACCENTED HAIR TYPE	PRF	MB	\$25.00
124	1964 D	HALF DOUBLED DIE OBVERSE, FS-101	AU59	MB	\$30.00
* 125	1964	HALF NICE RAGGED EDGE CLIP 4:00 TO 5:30	UNC	MB	\$53.00
126	1983 P	HALF STRONG CLASHED DIE FRONT OF NOSE & MOUTH AU	UNC	MB	\$3.50
127	N.D.	HALF CLAD, 80% OFF CENTER 6:00 WITH NICE CHAIN STRIKE EDGE DSBS	BU	MB	\$295.00
*					
128	1970 D	HALF NICE STRUCK THRU MIDDLE OF HEAD	BU	MB	\$70.00

* 129	1806	QUAR	8% STRAIGHT CLIP 3:00 WITH BLAKESLEY EFFECT VG RARE TYPE	MB		\$495.00
130	1864	QUAR	WITH ARROWS, MISALIGNED DIE REVERSE WITH HIGH RIM	VF	MB	\$60.00
131	1963	QUAR	STRUCK ON A STRUCK DIME DOUBLE DENOMINATION, PCGS SAYS FAKE EDUCATIONAL	AU	MB	\$395.00
132	N.D.	QUAR	TYPE 2 CLAD PLANCHET	UNC	MB	\$3.50
133	1954 S	QUAR	STRONG "CRACKED SKULL" DIE BREAK LUSTROUS	BU	MB	\$12.00
134	1967	QUAR	VERY STRONG CLASHED DIE OBVERSE & LIGHT REVERSE	SMS	MB	\$45.00
135	1966	QUAR	CLASHED DIES OBVERSE & REVERSE SMS COIN	SMS	MB	\$5.00
* 136	1967	QUAR	STRAIGHT CLIP 2:00 TO 10:30	UNC	MB	\$53.00
* 137	N.D.	QUAR	50% STRAIGHT CLIP/FRACTION	BU	MB	\$125.00
138	1941 S	QUAR	MMS-002.1 FS-503 LARGE S	EF	MB	\$11.50
139	1957	QUAR	TYPE 2 PROOF REVERSE FS-901	BU	MB	\$17.50
140	1958	QUAR	BREEN 4385, TYPE B REVERSE FS-901	BU	MB	\$17.50
141	1959	QUAR	TYPE 2 PROOF REVERSE FS-901	BU	MB	\$17.00
142	1961	QUAR	TYPE 2 PROOF REVERSE FS-901	AU	MB	\$12.00
143	1962	QUAR	TYPE 2 PROOF REVERSE FS-901	AU	MB	\$14.00
144	1963	QUAR	TYPE 2 PROOF REVERSE FS-901	BU	MB	\$17.50
145	1964	QUAR	TYPE 2 PROOF REVERSE FS-901	AU	MB	\$11.50
146	1943 S	QUAR	DOUBLED DIE OBVERSE	FIN	MB	\$150.00
* 147	N.D.	QUAR	90% OFF CENTER 6:00 DSBS + DIE STRUCK BOTH SIDES	BU	MB	\$35.00
148	N.D.	QUAR	85% OFF CENTER 6:00 UNIFACE OBVERSE	BU	MB	\$29.00
* 149	1976	QUAR	15% OFF CENTER 9:00	UNC	MB	\$115.00
* 150	1983	QUAR	50% OFF CENTER 2:00	BU	MB	\$49.00
151	1985	QUAR	70% OFF CENTER 12:30	BU	MB	\$49.00
* 152	1989 P	QUAR	35% OFF CENTER 1:00	BU	MB	\$49.00
153	2000 P	QUAR	VA, LARFGE UNCENTERED BROADSTRIKE , LOOKS 10% OFF CENTER	BU	MB	\$24.00
154	2006 P	QUAR	CO, UNCENTERED BROADSTRIKE WITH PARTIAL COLLAR	BU	MB	\$18.00
155	2007 D	QUAR	ID, UNCENTERED BROADSTRIKE WITH PARTIAL COLLAR	BU	MB	\$15.00
156	2005 D	QUAR	CA, UNCENTERED BROADSTRIKE WITH TILTED PARTIAL COLLAR	BU	MB	\$15.00
157	2007 P	QUAR	WA, UNCENTERED BROADSTRIKE WITH TOUCH OF COLLAR	BU	MB	\$27.00
158	2004 D	QUAR	WI, EXTRA HIGH LEAF ERROR	UNC	MB	\$110.00
159	2000	QUAR	NH, MISSING MINT MARK FILLED DIE	UNC	MB	\$5.00
160	2005 D	QUAR	KA, STRUCK ON AN ELLIPTICAL CLIPPED PLANCHET VERY EYE CATCHING	BU	MB	\$67.00
* 161	2001 P	QUAR	NC, UNCENTERED BROADSTRIKE	BU	MB	\$32.00
162	1999 P	QUAR	DE, CLASHED DIE = HAIR UNDER HORSE BELLY	AU	MB	\$2.00
163	2008 P	QUAR	OK, MULTI HEAVY DIE SCRATCHES LOOKS LIKE WIND FROM BIRD	BU	MB	\$2.50
164	1999 P	QUAR	DE, CLASHED DIE, LIKE HAIR UNDER HORSES BELLY	AU	MB	\$2.00
165	ASST	OTHER	8 COIN LOT, 6 QUARTERS, 1 NICKEL, 1 DIME ALL WITH MINOR ERRORS	ASST	MB	\$4.00
166	1831	DIME	SR03, UNLISTED CUD OVER "ER" REVERSE, 45 DEGREE ROTATED REVERSE	GD	MB	\$55.00
167	1912 D	DIME	MISALIGNED OBVERSE 5%	GD	MB	\$15.00
168	1942 D	DIME	STRONG MACHINE DOUBLING OBVERSE, CLEANED	VF	MB	\$4.00
169	1941 S	DIME	LARGE S MINT MARK FS-511	EF	MB	\$24.00
170	1926	DIME	DOUBLED DIE OBVERSE, DATE * MOTTO	EF	MB	\$25.00
171	1941 S	DIME	RPM #1 FS-501	FN+	MB	\$7.50

172	1941 S	DIME	TRUMPET TAIL "S" FS-511	FIN	MB	\$9.50	
173	1942 D	DIME	WRPM #052 FS-501	EF	MB	\$6.50	
174	1943 S	DIME	TRUMPET TAIL "S" FS-511	FIN	MB	\$17.50	
175	1951 D	DIME	RPM #1 FS-501	CHBU	MB	\$12.50	
176	1951 S	DIME	RPM #2	FIN	MB	\$4.00	
177	1960 D	DIME	RPM #1	FIN	MB	\$4.00	
178	1964 D	DIME	RPM #2	AU	MB	\$5.50	
179	1970	DIME	REVERSE OF 1968, HIGH RELIEF FS-901	AU	MB	\$11.50	
180	1970 D	DIME	REVERSE OF 1968, HIGH RELIEF	AU	MB	\$11.00	
181	N.D.	DIME	90% SILVER TYPE 2 PLANCHET	UNC	MB	\$18.00	
182	N.D.	DIME	TYPE 2 CLAD PLANCHET	UNC	MB	\$2.00	
183	1946 S	DIME	DOUBLED DIE REVERSE FS-502 LDS	BU	MB	\$39.00	
*	184	1971 D	DIME	CURVED CLIP 7:00 TO 9:00, 12%	BU	MB	\$5.00
185	ASST	OTHER	LOT OF 5 COINS, 2 LINCO;NS, 2 DIMES, 1 NICKEL ALL WITH FILLED MINT MARKS	ASST	MB	\$2.50	
186	1999 P	DIME	STRONG CLASHED DIIES OBV & REV	AU	MB	\$12.00	
*	187	1970 D	DIME	VERY WEAK STRIKE OBV & REV TRIAL?	UNC	MB	\$35.00
188	1964 D	DIME	DOUBLE STRUCK, 2ND 70% OFF CENTER 7:00 DSBS	UNC	MB	\$215.00	
*	189	N.D.	DIME	DOUBLE STRUCK, 2ND MIRROR BROCKAGE OF REVERSE ON OBVERSE	UNC	MB	\$165.00
190	1968 D	DIME	60% ATTACHED CLAMSHHELL REVERSE NICE EXAMPLE	AU	MB	\$45.00	
*	191	N.D.	DIME	37% INDENTED 3:30	BU	MB	\$42.00
*	192	N.D.	DIME	90% SILVER 60% OFF CENTER 2:00	AU	MB	\$55.00
193	ASST	DIME	LOT OF 11 DIMES IN ENVELOPES WITH DESCRIPTIONS	ASST	MB	\$3.00	
194	1835	H10c	NICE STRUCK THRU REVERSE ON LEFT WING	EF	MB	\$35.00	
*	195	1835	H10c	LARGE REVERSE CUD 10:00, SCRATCH OBVERSE	GD	MB	\$55.00
196	1839 O	H10c	CUD REVERSE 10:00, COIN BENT & DAMAGED STILL RARE	GD	MB	\$25.00	
197	1867	H10c	REVERSE ROTATED 180 DEGREES NOT IN BREEN OR BLYTHE, EXTREMELY RARE	VF	MB	\$150.00	
198	1883	NICK	LAMINATION OBVERSE 2:30 TO 4:30	EF	MB	\$28.00	
199	1896	NICK	LAMINATION TOP OF HEAD TO 8:00 KEY DATE	FIN	MB	\$24.00	
200	1906	NICK	LAMINATION 2:00 TO 4:00 IN FIELD OBVERSE	EF	MB	\$15.00	
201	1935	NICK	CURVED IM CLIP 8:00	GD	MB	\$7.00	
202	1925 D	NICK	5% CURVED CLIP 11:30, REVERSE COUNTER STRUCK "BULL"	VF	MB	\$245.00	
*	203	1820	NICK	LARGE CUD REVERSE 6:00 BNC-20-6RB	VF	MB	\$275.00
*	204	1935	NICK	DEEP STRUCK THRU OBVERSE	FIN	MB	\$22.00
205	1918 S	NICK	LAMINATION REVERSE 12:00 TO 3:30	GD	MB	\$10.00	
206	1918 S	NICK	LAMINATION REVERSE BUFFALO'S BACK	GD	MB	\$10.00	
207	1925 D	NICK	LARGE LAMINATION OUT REVERSE 2:30 TO 6:00	FIN	MB	\$22.00	
208	1938 D	NICK	LAMINATION 5:00 OBVERSE	MS50	MB	\$15.00	
209	1936 S	NICK	RPM #1 S OVERS FS501	VF	N	\$25.00	
210	1937 D	NICK	RPM #1a	EF	MB	\$8.50	
211	1938 D	NICK	RPM #2	GD	MB	\$3.00	
212	1920	NICK	LOT OF 2 COINS WITH ACID DATES 2 1/2 FEATHERS	GD	MB	\$10.00	
213	N.D.	NICK	TYPE 2 NICKEL PLANCHET	UNC	MB	\$8.00	
*	214	1989	NICK	COLLAR CUD 9:00 TO 12:00 LOOKS OFF CENTER	UNC	MB	\$37.00
215	974 D	NICK	CUD 6:00 OBVERSE JNC-74D-2	AU	MB	\$14.00	
*	216	1965	NICK	30% OFF CENTER STRETCHED LETTERS RARE DATE	BU	MB	\$150.00
217	1999 D	NICK	60% OFF CENTER 3:00 STRETCH STRIKE UNIFACE REVERSE	BU	MB	\$32.00	
*	218	1974	NICK	60% OFF CENTER 10:30	BU	MB	\$15.00
219	1972	NICK	80% OFF CENTER 10:00 UNIFACE REVERSE	UNC	MB	\$35.00	



8



9



16



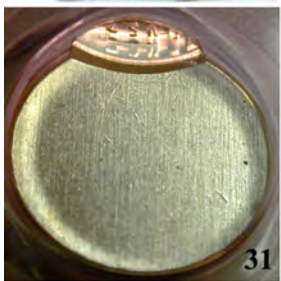
17



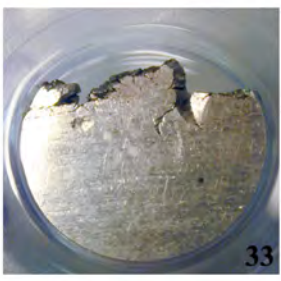
18



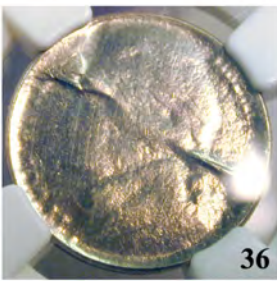
24



31



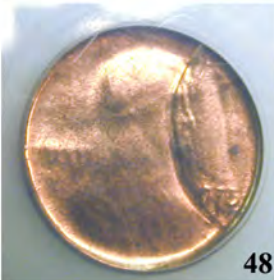
33



36



51



48



39



56



55



47



61



64



60



69



67



63



62



66



65



68



79



78



77



71



76



75



74



73



72



70

Become a CONECA Member

The Combined Organizations of Numismatic Error Collectors of America

Not yet a member of the world's greatest coin club ?
It's as easy as 1-2-3 to join !

Step 1 — Your Info

Your Name:
Your Mailing Address:
Your Email Address:
Your Phone number:
Username:
Password:
<p>Username and Password will provide you access to CONECA 'members only' area. (Your information will NOT be provided to others).</p> <p>Recommended by: James Essence Jim's Coins</p>



Step 2 — Your Choices

Dues ONE year	
Adult member	\$ 25.00
Young member (under 18)	\$ 7.50
Mailing Options	
U.S. Bulk Rate	\$ 0.00
First Class or Foreign	\$ 12.50
Total payable to CONECA	

Dues TWO years	
Adult member	\$ 50.00
Young member (under 18)	\$ 15.00
Mailing Options	
U.S. Bulk Rate	\$ 0.00
First Class or Foreign	\$ 25.00
Total payable to CONECA	

Step 3 — Mail in Payment

Send your check or money order payable to CONECA:

Rachel Irish
101 W. Prairie Center #323
Hayden, ID 83835

MRIrish5@roadrunner.com

Your membership is subject to approval by the Membership Committee and subject to the rules and regulations set forth in the CONECA Constitution and By-Laws.



**SUBSCRIPTION FOR THE YEAR 2014
DON'T MISS ANY OF THESE SALES!
SEMI-MONTHLY ERROR CATALOGS PUBLISHED FOR THE PAST 25 YEARS!**

THE SUBSCRIPTION PRICE IS \$8.00 FOR SIX CATALOGS ON A SEMI-MONTHLY BASIS. COST OF PRINTING AND MAILING THE LAST CATALOG WAS \$2.06 EACH. WE DON'T MIND SENDING CATALOGS TO COLLECTORS OF CATALOGS IF YOU SHARE IN THE COST OF THE CATALOGS.

WE WILL AUTOMATICALLY BILL \$8.00 SUBSCRIPTION DUES TO ALL WINNING BIDDERS WHO HAVE NOT YET PAID UNLESS OTHERWISE PAID OR INFORMED.

WE HAVE A FULL SERVICE COIN & STAMP STORE THAT IS LOCATED IN HILLDALE MALL IN MADISON, WI. PLEASE FEEL FREE TO STOP BY IF YOU ARE IN TOWN.

WE ARE ALSO ENTHUSIASTIC BUYERS OF ALL ERRORS AS WELL AS NORMAL COINS, STAMPS AND COLLECTIBLE RED/BLUE BOOKS!

PLEASE VISIT OUR WEB SITE AT www.Jimscoins.com MANY OF THE PHOTOS IN THE WEB SITE VERSION ARE *FULL COLOR*.

NEW PROGRAM: FREE CONECA MEMBERSHIP UPON REQUEST FOR NEW MEMBERS WITH WINNING BIDS TALLING \$50 OR MORE.

CONSIGNORS: GETTING TOUGHER TO FIND ERRORS TO FILL THE AUCTIONS. IF YOU HAVE SOME TO SELL OR CONSIGN, PLEASE LET US KNOW. TERMS ARE 15% COMMISSION, YOU SET THE MINIMUM BID AND NO CHARGE IF THE COIN DOES NOT SELL. ALSO BID GENEROUSLY SO WE CAN AFFORD TO BUY SOME MORE. HEH-HEH. -LEN & JIM

NOTES FOR J-61: WE ARE IN A DEEP FREEZE HERE, SO MAYBE A GOOD TIME FOR YOU NORTHERNERS TO HUNKER DOWN AND ADD SOME ERRORS TO YOUR COLLECTION. AND AS FOR THOSE LUCKY DUCKS IN THE SOUTH, BEST TO KEEP THE WIFE HAPPY AND BUY ERRORS INSTEAD OF SPENDING MONEY GOING OUT AND GETTING INTO TROUBLE. HAVE FUN AND BID HIGH! -LEN & JIM

NAME _____

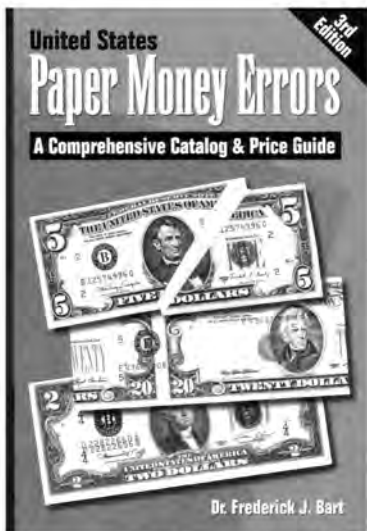
ADDRESS _____

CITY _____ STATE _____ ZIP _____

PHONE (OPTIONAL) _____

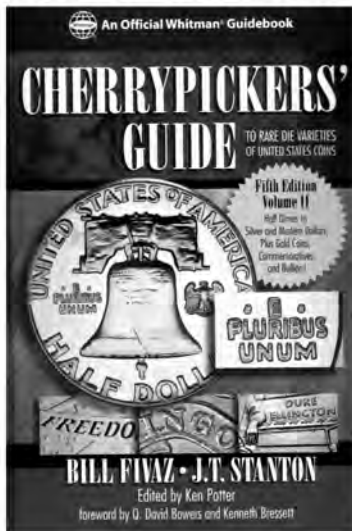
YOUR ADDRESS LABEL HAS A YEAR ON IT SO YOU WILL KNOW WHEN YOUR SUBSCRIPTION EXPIRES.

THANKS AGAIN TO ALL OF YOU! -LEN & JIM



NEW 3RD EDITION PAPER MONEY ERROR BOOK BY BART 285 PAGES, \$26.95 RETAIL, HERE \$16.00 POST PAID!

LATEST 4TH EDITION COMPLETE VAM BOOK 530 PAGES, \$99.95 RETAIL, HERE \$62.00 POSTPAID!



JUST RELEASED VOL 2, 5TH ED CHERRY PICKER'S GUIDE HALF DIMITES TO GOLD COINS, 483 PAGES, \$36.00 POSTPAID!

HARD TO FIND CLASSIC DETECTING COUNTERFEIT GOLD COINS BY LONESOME JOHN, 268 PAGES, \$14.95 RETAIL, \$10 POSTPAID!

\$14.95
DETECTING COUNTERFEIT GOLD COINS Book 2



WHICH COIN IS COUNTERFEIT??



IF YOU DON'T KNOW YOU COULD BE IN REAL TROUBLE!

DO IT YOURSELF COUNTERFEIT PROTECTION!!

By Lonesome John



96



98



101



102



103



105



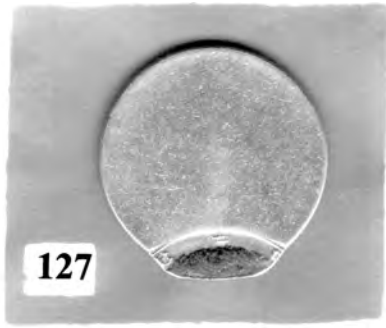
107



109



125



127



129



402



403



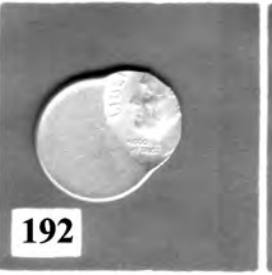
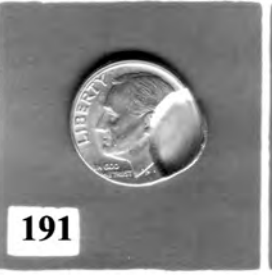
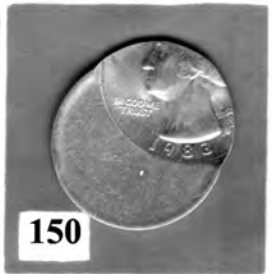
419



427



441





202



203



204



214



216



218



220



222



223



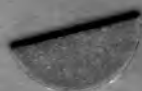
224



228



230



351



352



357



358



362



364



365



374



375



381



384



386



389



405



412



416



424



429

* 220	1949 D	NICK	10% OFF CENTER 3:00 RARE DATE	CHAU	MB	\$220.00
221	1964	NICK	DISHED OBERSE BROADSTRIKE	UNC	MB	\$67.00
* 222	1964	NICK	CENTERED BROADSTRIKE LARGER THAN A QUARTER, SUPER STRETCHED LETTERING	UNC	MB	\$85.00
* 223	1984 P	NICK	HUGE BRDSTK AND 60% BROCKAGE PERFECT MUSHROOM PROBABLY MULTI STRUCK	BU	MB	\$200.00
* 224	N.D.	NICK	60% INDENTED BROCKAGE 6:00 NEAT ERROR	BU	MB	\$84.00
225	1954 S	NICK	S SHAPED CRACKED SKULL	UNC	MB	\$2.50
226	1964 D	NICK	RIM CLIP 2:00	VF	MB	\$1.00
227	1939 D	NICK	RAGGED EDGE CLIP 8:00 TO 9:00	MS65	MB	\$49.00
* 228	1972 D	NICK	DOUBLE STRUCK, 2nd 90% OFF CENTER 6:30 UNIFACE REVERSE	UNC	MB	\$26.00
229	1999 P	NICK	DOUBLE STRUCK IN COLLAR NO ROTATION, LITTLE MISALIGNED DIE	BU	MB	\$28.00
* 230	1972 D	NICK	STRUCK ON CENT PLANCHET	AU	MB	\$230.00
231	1959	NICK	SINTERED PLANCHET "BLACK BEAUTY"	BU	MB	\$7.00
232	1969 S	NICK	30 DEGREE ROTATED REVERSE	UNC	MB	\$5.00
233	1950	NICK	DOUBLED DIE REVERSE SHOWS ON AMERICA, CENTE, ELLO	PRF	MB	\$40.00
234	1943 P	NICK	RPM #15 SILVER WAR NICK	BU	MB	\$15.00
235	1943 P	NICK	WIDE LAMINATION OFF OBERSE 11:00 TO 2:30	FIN	MB	\$4.00
236	1943 P	NICK	LAMINATION OFF 5:00 TO 10:00	VG	MB	\$8.00
237	1943 P	NICK	LARGE LAMINATION OBERSE 7:00 TO 11:00 TO EDGE 9:00	EF	MB	\$5.00
238	ASST	NICK	4 COIN LOT WITH LAMINATIONS	CIRC	MB	\$5.00
239	ASST	NICK	12 COIN LOT 2005 D WITH MINOR ERRORS BU TO	UNC	MB	\$8.00
240	1861	SIL3c	180 DEGREE ROTATED REVERSE HOLED	VG	MB	\$25.00
241	1864	2CENT	145 DEGREE ROTATED REVERSE	AU	MB	\$45.00
242	1839	CENT	10% SPLIT OFF LAMINATION + 2% CLIP AT 8:30, LIGHT CORROSION	VF+	MB	\$5.00
243	1864 L	CENT	HEAVY STRUCK THRU TOUGH DATEEF	M	MB	\$123.00
244	1857	CENT	CLASHED WITH SEATED 50c DIE	VF	MB	\$45.00
245	1982	CENT	ALL 6 DIFFERENT, LARGE, SMALL, COPPER & ZINC BU ALL 40% TO 85% OFF CENTER	BU	MB	\$225.00
246	1917	CENT	DOUBLED DIE OBERSE #1	VG+	MB	\$85.00
247	1936	CENT	DOUBLED DIE OBERSE 3-O-V REVERSE DAMAGED, FS-103	VF	MB	\$35.00
249	1941	CENT	DOUBLED DIE OBERSE 2-0--1 FS-102	VF	MB	\$37.50
250	1941	CENT	STRONG DDO(DOUBLED DIE OBV) FS-102	VF	MB	\$39.00
251	1962	CENT	DDO PR-5-0-V-O	PRF	MB	\$10.00
252	1964	CENT	DDR-029	PRF	MB	\$25.00
253	1944 D	CENT	D OVER S OMM #2, FS-512	VF	MB	\$37.50
254	1944 D	CENT	D OVER S TYPE II	VF	MB	\$45.00
255	194 D	CENT	D OVER S OMM #2 CORRCDED	VF	MB	\$3.00
256	ASST	CENT	2002, 2004, 2005 DOUBLED DIE REV , EXTRA COLUMN BY CHAIR	BU	MB	\$15.00
257	1952 D	CENT	D OVER S OMM #1 (OVER MINT MARK)	EF	MB	\$22.50
258	1952 D	CENT	RPM #15, WRPM #16	FIN+	MB	\$12.50
259	1955 D	CENT	DDO-1-O-IV+VIII FS-101	VF	MB	\$9.00
260	1972	CENT	DDO-2-0-I FS-102	EF	MB	\$6.50
261	2009	CENT	WDDR-003, DDR-3-R-VIII	BU	MB	\$5.50
262	1925 S	CENT	RPM #3	VF	MB	\$7.50
263	1934 D	CENT	RPM #3 STAGE B FS-501	VF	MB	\$7.00
264	1938 S	CENT	RPM #2 FS-502	VF	MB	\$4.00
265	1939 D	CENT	RPM #1 CLEANED	VF	MB	\$1.50
266	1942 D	CENT	RPM #3	AU	MB	\$7.50
267	1942 D	CENT	RPM #3	BU	MB	\$17.50
268	1943 D	CENT	RPM #12	UNC	MB	\$20.00

269	1944 D	CENT	RPM #1	WDDO-022	BU	MB	\$6.50
270	1944 D	CENT	RPM #2	FS-503	VF	MB	\$2.00
271	1944 D	CENT	RPM #7	FS-504	VG+	MB	\$2.00
272	1945 D	CENT	RPM #4		VF	MB	\$1.50
273	1945 S	CENT	RPM #5		VF	MB	\$2.50
274	1947 S	CENT	RPM #4	STAGE B	BU	MB	\$7.50
275	1948 D	CENT	RPM #5		VF	MB	\$2.25
276	1949 D	CENT	RPM #1	FS-501	EF	MB	\$3.50
277	1949 D	CENT	RPM #10		MS65	MB	\$12.00
278	1949 S	CENT	RPM #3	+ 1% CLIP 3:00	AU	MB	\$7.50
279	1949 S	CENT	RPM #1		FIN	MB	\$2.50
280	1949 S	CENT	RPM #2		BU	MB	\$7.00
281	1949 S	CENT	RPM #4		BU	MB	\$7.00
282	1951 D	CENT	WDMM, DIE BREAK IN 5	FS-503	FIN	MB	\$3.00
283	1952 D	CENT	WRPM #16	RPM #15	FN+	MB	\$12.00
284	1952 S	CENT	RPM #5		VF	MB	\$1.75
285	1952 S	CENT	RPM #9		VF	MB	\$1.75
286	1952 S	CENT	RPM #10		VF	MB	\$1.75
287	1953 D	CENT	RPM #1	FS#1C-21.73	VG+	MB	\$1.75
288	1953 D	CENT	RPM #1	FS-501	EF	MB	\$4.50
289	1953 D	CENT	RPM #10		EF	MB	\$1.75
290	1953 D	CENT	RPM #23		UNC	MB	\$4.00
291	1953 D	CENT	LOT OF 5 COINS ALL RPM #1	AU TO VF	ASST	MB	\$10.00
292	1953 D	CENT	RPM #1		AU	MB	\$2.50
293	1953 S	CENT	RPM #5		EF	MB	\$1.75
294	1953 S	CENT	RPM #4		VF	MB	\$2.00
295	1954 D	CENT	RPM #1	FS-501	EF	MB	\$2.00
296	1954 S	CENT	RPM #4		EF	MB	\$1.75
297	1955 D	CENT	RPM #2		EF	MB	\$1.50
298	1955 D	CENT	RPM #3	FS-501	EF	MB	\$2.00
299	1955 D	CENT	RPM #3	FS--501	BU	MM	\$12.50
300	1955 D	CENT	RPM #4		EF	MB	\$1.75
301	1955 S	CENT	RPM #1		BU	MB	\$27.50
302	1955 S	CENT	RPM #2	STAGE E	BU	MB	\$3.25
303	1955 S	CENT	RPM #4	STAGE A.5	BU	MB	\$3.25
304	1955 S	CENT	RPM #4	5 COINS WITH 5 DIFFERENT STAGES ALL BU	BU	MB	\$12.50
305	1956 D	CENT	RPM #1		VF	MB	\$3.50
306	1956 D	CENT	RPM #5		BU	MB	\$3.00
307	1956 D	CENT	RPM #8	FS-501	EF	MB	\$22.50
308	1957 D	CENT	RPM #17		EF	MB	\$1.75
309	1958 D	CENT	RPM #1		EF	MB	\$2.00
310	1958 D	CENT	RPM #15		EF	MB	\$1.75
311	1959 D	CENT	RPM #1	FS-501	EF	MB	\$4.25
312	1959 D	CENT	RPM #6		EF	MB	\$1.50
313	1959 D	CENT	RPM #6		BU	MB	\$2.75
314	1959 D	CENT	RPM #17		BU	MB	\$2.75
315	1960 D	CENT	RPM #1		EF	MB	\$2.50
316	1960 D	CENT	RPM #5		VF	MB	\$1.50
317	1960 D	CENT	RPM #5		BU	MB	\$3.00
318	1960 D	CENT	RPM #10	STAGE C	AU	MB	\$2.00
319	1960 D	CENT	RPM #16		BU	MB	\$5.50
320	1960 D	CENT	RPM #20		BU	MB	\$2.75
321	1960 D	CENT	RPM #35	STAGE A	BU	MB	\$2.75
322	1960 D	CENT	RPM #38		BU	MB	\$3.00
323	1960 D	CENT	RPM #102	STAGE C	UNC	MB	\$2.25
324	1960 D	CENT	RPM #109		AU	MB	\$2.00

325	1960 D	CENT	RPM #110	BU	MB	\$2.75
326	1961 D	CENT	RPM #4	UNC	MB	\$2.50
327	1961 D	CENT	RPM #18	BU	MB	\$2.75
328	1961 D	CENT	RPM #21	BU	MB	\$2.50
329	1961 D	CENT	RPM #32	BU	MB	\$2.25
330	1961 D	CENT	RPM #39	BU	MB	\$2.25
331	1961 D	CENT	RPM #47	UNC	MB	\$2.00
332	1961 D	CENT	RPM #58	BU	MB	\$2.25
333	1961 D	CENT	RPM #60	BV	MB	\$2.25
334	1961 D	CENT	RPM #64	BU	MB	\$2.25
335	1961 D	CENT	RPM #65	BU	MB	\$2.25
336	1962 D	CENT	RPM #2	BU	MB	\$2.50
337	1962 D	CENT	RPM #15	BU	MB	\$2.50
338	1964 D	CENT	RPM #7	BU	MB	\$2.25
339	1964 D	CENT	RPM #12	BU	MB	\$2.25
340	1964 D	CENT	RPM #15	BU	MB	\$2.25
341	1964 D	CENT	RPM #17	BU	MB	\$2.25
342	1954 S	CENT	BIE	VF+	MB	\$1.00
342	1955 D	CENT	BIE	AU	MB	\$1.50
343	1955 S	CENT	BIE	BU	MB	\$2.50
345	1957 D	CENT	BIE	EF	MB	\$1.50
346	ASST	CENT	5 DIFFERENT WHEAT BACKS RPMs ALL EF	EF	MB	\$7.00
347	ASST	CENT	5 DIFFERENT WHEAT BACKS RPMs ALL	VF	MB	\$6.75
348	ASST	CENT	4 DIFFERENT MEMORIAL RPMs ALL	BU	MB	\$8.00
349	ASST	CENT	10 DIFFERENT MEMORIAL RPMs ALL BU	BU	MB	\$20.00
350	N.D.	CENT	TYPE 2 COPPER PLANCHET	CIRC	MB	\$1.00
* 351	N.D.	CENT	TYPE 1 COPPER BLANK WITH 59% STRAIGHT CLIP	UNC	MB	\$55.00
* 352	N.D.	CENT	TYPE 1 COPPER BLANK WITH 40%,5% &5% CURVED CLIPS	UNC	MB	\$55.00
353	2000	CENT	WIDE AM	AU	MB	\$3.00
354	1922 D	CENT	3 CRACKS SHATTERED DIE REVERSE	VF	MB	\$29.00
355	1993 D	CENT	DIE CRACKS ON HEAD "CRACKED SKULL"	BU	MB	\$1.00
356	1960 D	CENT	BIE DIE BREAK IN LIBERTY	AU	MB	\$2.00
* 357	1973 D	CENT	DOUBLE STRUCK, 2nd 70%% OFF CENTER 1:00 DSBS =DIE STRUCK BOTH SIDES	UNC	MB	\$55.00
* 358	1986	CENT	DOUBLE STRUCK, 2nd 65% OFF CENTER 10:00 DSBS WITH 2 DATES	UNC	MB	\$115.00
359	1987 D	CENT	DOUBLE STRUCK, 2nd 75% OFF CENTER UNIFACE REVERSE WITH 2 FULL DATES & MINT MARKS	BU	MB	\$135.00
360	1981 S	CENT	TYPE 2 MINT MARK	PF60	MB	\$24.00
361	1950	CENT	BIE DIE BREAK	VF	MB	\$0.25
* 362	1964	CENT	HUGE CUPPED 70% BROCKAGE 11:00	BU	MB	\$65.00
363	N.D.	CENT	OBVERSE STRUCK THRU MID STATE DIE, UNREADABLE DATE	UNC	MB	\$22.00
* 364	N.D.	CENT	MEMORIAL, LATEE STAGE DOUBLE CLASHED CAP STRIKE, 1ST CLASH SHIFTED, 2nd ON CENTER 3.09 GRAMS	MS63	MB	\$215.00
* 365	N.D.	CENT	MIRROR BROCKAGE REVERSE ON OBVERSE	UNC	MB	\$195.00
366	1918 D	CENT	LAMINATION PEELLING	GD	MB	\$0.50
367	1925 S	CENT	LAMINATION PEELLING REVERSE	VG	MB	\$2.00
368	1953	CENT	CRACKED SKULL & SHIFTED 3	EF	MB	\$1.00
369	1958 D	CENT	LAMINATION PEELLING ACROSS LINCOLN	AU	MB	\$1.00
370	1958 D	CENT	LKARGE LAMINATION PEELLING REVERSE 18%	EF	MB	\$1.00
371	1979 D	CENT	SMALL LAMINATION PEEL OBVERSE	UNC	MB	\$0.50
372	1985 D	CENT	SMALL LAMINATION PEEL 11:00 REVERSE	UNC	MB	\$3.50
373	1941	CENT	2% CLIPPED PLANCHET 1:00	FIN	MB	\$1.00
* 374	1964 D	CENT	DOUBLE CLIPPED 10% 1:00 & 2% 7:00	AU	MB	\$1.50
* 375	1969 D	CENT	20% CURVED CLIP 7:00 TO 11:00 RED	UNC	MB	\$5.00

376	1983	CENT	BUBBLED SURFACES, IMPROPER PLATING	UNC	MB	\$1.00
377	1930 D	CENT	ACID TREATED THIN PLANCHET GET AN EDUCATION FOR LESS THAN A BUCK!!!	FN	MB	\$0.50
378	1945 S	CENT	MEDIUM CENTERED BROADSTRIKE	FIN	MB	\$1.00
379	1987	CENT	UNCENTERED BROADSTRIKE	UNC	MB	\$2.50
380	1991	CENT	CENETERED BROADSTRIKE	UNC	MB	\$1.50
*	381	2000	CENT BROADSTRUCK WITH 2% CLIP 1:30	BU	MB	\$12.00
	382	ASST	CENT LOT OF 8 COINS WITH BUBBLED SURFACES	AU	MB	\$3.50
	383	1943 S	CENT DEEP 15% STRUCK THRU REVERSE 7:30	VF	MB	\$6.50
*	384	1958	CENT 70% OFF CENTER 7:30 RED COPPER	BU	MB	\$95.00
	385	X951 D	CENT 85% OFF CENTER 9:00 DSBS	UNC	MB	\$95.00
*	386	1952 D	CENT 20% OFF CENTER 8:00 NICE RED	BU	MB	\$99.00
	387	1968	CENT 5% OFF CENTER 2:00 BROWN	BU	MB	\$35.00
	388	1982	CENT SMALL DATE COPPER, 25% OFF CENTER 11:00	BU	MB	\$55.00
*	389	1996 D	CENT 40% OFF CENTER 1:00	BU	MB	\$22.00
	390	2000	CENT 5% OFF CENTER 7:00	BU	MB	\$35.00
	391	2003	CENT 5% OFF CENTER, DETAIL MISSING REVERSE	BU	MB	\$6.00
	392	N.D.	CENT 70% OFF CENTER 4:30	UNC	MB	\$3.50
	393	N.D.	CENT 75% OFF CENTER 2:00	UNC	MB	\$3.00
	394	N.D.	CENT LOT OF 100 COPPER TYPE 1 BLANKS MOSTLY RED	UNC	MB	\$280.00
	395	ASST	CENT 7 WHEAT CENTS WITH MINOR ERRORS	CIRC	MB	\$2.00
	396	ASST	CENT LOT OF 10 WHEAT & MEMORIALS MINOR ERRORS	CIRC	MB	\$2.00
	397	ASST	CENT LOT OF 10 AS IN LOT 396	CIRC	MB	\$2.00
	398	ASST	CENT LOT OF 10 BROADSTRUCK OR MINOR OFF CENTER	UNC	MB	\$19.00
	399	ASST	CENT LOT OF 6 SMALL BROADSTRUCK OR OFF CENTER	CIRC	MB	\$12.00
	400	ASST	CENT "WHAT'S IT?" 10 COINS LOOK LIKE ERRORS, BUT ARE NOT ERRORS, PLATED, CUT, MELTED ETC	CIRC	MB	\$2.50
	401	2000	OTHER PETER PIPER 25c SIZE, CUPPED DIE LIKE CAP BRASS	UNC	MB	\$19.00
	402	1976	OTHER SUPER COOL ELLIPTICAL STTENDE MAI MEDAL APROX 1/3 GONE	BU	MB	\$22.00
	403	N.D.	OTHER ANCIENT BYSANTINE, FLIPOVER DOUBLE STRUCK	VG	MB	\$85.00
	404	55BC	OTHER ROMAN REPUBLIC, OBV, VEILED HEAD OF CONCORD, REVIS MIRROR BROCKAGE	FIN	M,	\$85.00
*	405	229BC	OTHER ILLYRIA, 229 TO 100 BC 35% OFF CENTER OBVERSE TONED OBV	FIN	MB	\$90.00
	406	1947	OTHER ARGENTINA 2 CENTAVO, 8% OFF CENTER AT 5:30	BU	MB	\$6.00
	407	1942 Y	OTHER AUSTRALIA PENNY, LARGE LAMINATION PEELING OBVERSE	EF	MB	\$8.00
	408	(1983)	OTHER BERMUDA \$1.00, TRIAL PLANCHET STRUCK WOTH NO DETAILS EXCEPT RIMS, COMES WITH A REGULAR COIN	BU	MB	\$55.00
	409	1828	OTHER BRAZIL 40 RIES, DOLLAR SIZE COPPER, 15% OFF CENTER 8:00	EF	MB	\$45.00
	410	1829 R	OTHER BRAZIL 20c, 5% OFF CENTER	VF	MB	\$35.00
	411	1946	OTHER BRAZIL 20c, DOUBLE STRUCK IN COLLAR	VF	MB	\$42.00
*	412	1977	OTHER BRAZIL 20c, STRUCK ON A 5c PLANCHET	BU	MB	\$46.00
	413	1961	OTHER CANADA CENT, STRIKE DOUBLING OBVERSE	EF	MB	\$1.50
	414	1981	OTHER CANADA CENT, 10% OFF CENTER + PANAMA 1/4 BALBOA, LOOKS SLIGHT ELIPTAL CLIPPED	CURC	MB	\$2.50
	415	1943	OTHER CANADA NICKEL, LAMINATION PEELING OBVERSE	AU	MB	\$2.00
*	416	1963	OTHER CANADA DIME, 5% CURVED CLIP 10:00B	BU	MB	\$4.00
	417	1968	OTHER CANADA DOLLAR, DOUBLED DIE	P/L	MB	\$25.00
	418	1879/08	OTHER CHINA KUANG-HAU 10 CASH, MIRROR BROCKAGE OBV ON REV	VF	MB	\$60.00
	419	1917	OTHER CHINA 20 CASH, 70% OFF CENTER WITH LARGE ROLLED IN SLAG ON OBV BLANK+	VG	MB	\$45.00

420	1947	OTHER COSTA RICA 5 CENTAVOS, 5% OFF CENTER CUPPED	EF	MB	\$26.00
421	1955	OTHER CYPRUS 3c, DOUBLED DIE OBVERSE	BU	MB	\$3.00
422	ASST	OTHER CYPRUS 50 MILS 20% CLIP + 5% CLIP, 2ND COIN CYPRUS 1 MILL 5% STRAIGHT CLIP NEAT PAIR	UNC	MB	\$6.00
423	ASST	OTHER 6 COINS, LAMINATIONS, DIE CRACK, ETC, 1923 GUATAMALAPESO, 1931 SILV 3c, 1944 CANADA DIME, 1952 1 PICE, COLUMBIA 1c,	VF	MB	\$8.00
*	424	1992 OTHER GR BRITAIN, 10 PENCE STRUCK OFF CENTER ON 5 PENCE PLANCHET	BU	MB	\$230.00
425	1967	OTHER GHANA HALF PESEWA WITH 5% CLIP	AU	MB	\$1.50
426	1954	OTHER GR BRITAIN 3 PENCE, DOUBLED DIE	UNC	MB	\$5.00
*	427	1965 OTHER GR BRITAIN PENNY, 7% OFF CENTER 11:00	UNC	MB	\$5.00
428	1889	OTHER INDIA 1/4 ANNA, DOUBLE CLASHED DIE OBV & REV	BU	MB	\$20.00
*	429	1984 OTHER INDIA 10 PAISE, 16 SIDED COIN WITH LARGE CUDS ON 3 SIDES OBV	AU	MB	\$85.00
430	N.D.	OTHER INDIA 5 RUPEE, 85% OFF CENTER WITH SECURITY EDGE	UNC	MB	\$12.00
431	N.D.	OTHER INDIA 5 RUPEE, 85% OFF CENTER WITH SECURITY EDGE	UNC	MB	\$12.00
432	N.D.	OTHER INDIA 1 RUPEE TYPE 2 PLAMCHET 1980s STYLE	UNC	MB	\$4.50
433	N.D.	OTHER INDIA 1 RUPEE, TYPE 2 PLANCHET 1990s STYLE	BU	MB	\$4.00
435	1972	OTHER LUXEMBOURG 25c, SMALL STRAIGHT CLIP	BU	MB	\$2.00
434	1950	OTHER NORWAY 1 KRONE, NICE DOUBLED DIE II-B-1.0 CCW	EF	MB	\$5.00
436	1907	OTHER PANAMA MEDIO CENT. DE BALBOA, STRONG DOUBLED DIE OBVERSE	BU	MB	\$15.00
437	1974	OTHER PERU 10c, DOUBLED DIE REVERSE	EF	MB	\$3.00
438	1974	OTHER POLAND 10 GROSZY, 5% CURVED CLIP	BU	MB	\$1.50
439	1928 B	OTHER SWISS 1 FRANCS, SILVER, II-C-I-S	AU	MB	\$5.00
440	1976	OTHER TUVALU 10c, 10% CURVED CLIP	BU	MB	\$5.00
441	1990	OTHER POLAND 100K Z, HUGE DOUBLE STRIKE, 2nd 60% OFF CENTER WITH PCGS TAG WON'T FIT IN SLAB	MS67	MB	\$450.00
442	1971 D	CENT LATE ADDITIONS: 60% OFF CENTER 11:00	UNC	MB	\$20.00
443	1970 S	CENT 50% OFF CENTER 8:00 S MINT!!! RED BROWN	UNC	MB	\$125.00
444	1984	CENT 50% OFF CENTER 8:00	BU	MB	\$10.00
445	1984	CENT 55% OFF CENTER 8:00	UNC	MB	\$8.00
446	1984	CENT 70% OFF CENTER 8:00	BU	MB	\$10.00
447	1981 X	CENT 45% OFF CENTER 8:00	BU	MB	\$14.00

THANK YOU!

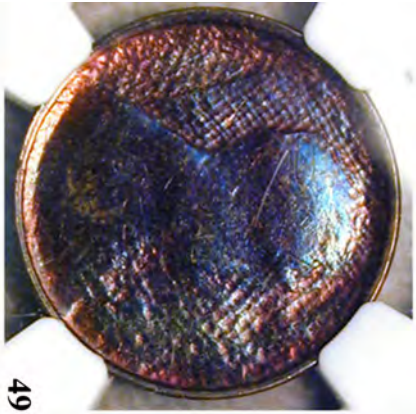
PRICES REALIZED SALE 60 — CLOSED 12/8/2013

2	\$85.00	185	\$8.25	R	311	\$4.25	442	\$15.00		
14	\$3,900.00	186	\$9.90	R	315	\$3.00	443	\$4.00		
30	\$37.50	188	\$11.50		320	\$16.50	R	444	\$3.30	
33	\$500.00	198	\$30.10		321	\$2.00	446	\$2.20	R	
41	\$205.00	200	\$8.00	T	323	\$10.00	447	\$23.21	R	
45	\$99.00	201	\$25.00		326	\$2.20	R	448	\$15.10	
46	\$148.50	R	202	\$50.00	327	\$9.07	R	452	\$8.50	
53	\$250.00	203	\$35.00		331	\$3.00	455	\$10.00		
74	\$45.00	204	\$55.00		332	\$4.50	457	\$15.10		
79	\$425.00	206	\$225.00		333	\$9.00	472	\$15.00		
80	\$125.00	208	\$235.00		344	\$42.00	481	\$4.00		
82	\$41.25	210	\$21.50		351	\$1.65	R	506	\$2.50	
83	\$55.00	211	\$22.00		352	\$66.00	R	532	\$1.25	
85	\$68.00	212	\$14.30	R	357	\$110.00	535	\$8.00		
89	\$194.70	R	213	\$23.00	360	\$21.01	R	540	\$5.50	
90	\$20.00	216	\$27.50	R	361	\$18.00	541	\$5.00		
92	\$299.00	220	\$15.00		368	\$125.00	542	\$4.73	R	
93	\$395.00	225	\$5.00		377	\$4.40	R	543	\$4.73	R
95	\$50.33	R	227	\$28.60	R	380	\$3.00	544	\$4.73	R
96	\$225.00	228	\$60.00		382	\$2.00	545	\$3.63	R	
97	\$110.00	R	229	\$13.20	R	383	\$4.00	546	\$4.73	R
98	\$299.00	230	\$9.23	R	385	\$4.00	T	547	\$11.00	R
99	\$37.40	R	231	\$8.00	387	\$5.00	549	\$4.00	T	
100	\$695.00	235	\$16.00		388	\$60.61	R	550	\$3.00	
105	\$35.00	239	\$4.25		390	\$29.57	R	551	\$11.33	R
108	\$40.00	241	\$4.00		391	\$6.00	552	\$10.00		
111	\$55.00	243	\$5.50		392	\$4.40	R	553	\$7.00	
114	\$45.00	256	\$3.00		394	\$16.50	R	554	\$7.00	
118	\$42.00	261	\$125.00		395	\$84.70	R	556	\$6.25	
127	\$45.00	262	\$105.00		400	\$10.00	557	\$30.42	R	
135	\$242.00	R	263	\$15.00	402	\$10.00	558	\$11.00	R	
139	\$7.00	264	\$74.56	R	404	\$50.00	559	\$4.00		
145	\$300.00	269	\$13.00		405	\$5.14	R	560	\$6.00	
151	\$79.00	277	\$9.00		406	\$59.00	561	\$11.00	R	
152	\$39.00	278	\$4.00	T	410	\$14.00	562	\$6.28		
153	\$18.00	279	\$24.00		411	\$6.32	R	564	\$14.00	
154	\$12.00	280	\$14.00		412	\$1.00	573	\$3.50		
155	\$20.00	284	\$3.63	R	413	\$17.33	R	575	\$3.50	
156	\$52.00	285	\$5.00		414	\$55.11	R	578	\$10.00	
162	\$36.30	R	286	\$3.30	R	415	\$15.00	579	\$6.60	R
164	\$6.75	287	\$3.30	R	418	\$1.50	580	\$3.58	R	
165	\$5.50	292	\$177.00		419	\$20.00	581	\$2.75	R	
166	\$7.50	294	\$65.00		420	\$5.42	R	583	\$35.00	
169	\$7.50	296	\$135.00		421	\$24.20	R	587	\$5.50	R
170	\$8.80	R	297	\$19.80	R	422	\$15.00	589	\$30.00	
171	\$2.00	298	\$16.00		424	\$4.40	R	592	\$5.30	
178	\$15.00	299	\$2.00		425	\$3.00	595	\$35.00		
181	\$3.30	R	301	\$29.70	R	429	\$14.17	R		
182	\$140.00	302	\$13.75	R	432	\$2.00				
183	\$45.00	303	\$12.50		433	\$3.85	R			
184	\$9.00	304	\$18.81	R	434	\$4.40	R			
		305	\$9.90	R	437	\$5.00				
		306	\$7.43		440	\$5.61	R			

THATS IT FOR THIS SALE. THANKS TO ALL THAT JOINED IN ON THIS ONE.
 R = PRICE REDUCED FROM BID. T = TIE BIDS RECEIVED FIRST POST MARK WINS.
 UNSOLD LOTS MAY BE PURCHASED FOR MINIMUM BID OR EST PRICE WITHIN NEXT 2 WEEKS.
 THANKS AGAIN TO ALL OF YOU. - LEN ROOSMALEN



7



49

JIM'S CBS

34



1



6



35