

JIM'S C&S

Hilldale Shopping Center
702 N. Midvale Blvd. B-2
Madison, WI 53705
(608) 233-2118

www.jimcoins.com



NO.59

16 PERFECTLY SYMMETRICAL BI DOUBLE STRIKE!

**MAIL BID SALE #59
CLOSES OCTOBER 8, 2013**

- 1) **SEND ALL BIDS TO: JIM'S COINS, 702 N. MIDVALE BLVD. B-2, MADISON, WI 53705, OR FAX #608-233-0175, OR PHONE 608-233-2118, OR EMAIL: jimcoins@sbcglobal.net**
- 2) **THE HIGHEST BIDDER ACKNOWLEDGED BY THE AUCTIONEER SHALL BE THE BUYER. THE AUCTIONEER RESERVES THE RIGHT TO REJECT ANY BID OR WITHDRAW ANY LOT FROM THE SALE. BIDDERS ARE RESPONSIBLE FOR THEIR OWN ERRORS, SO DOUBLE CHECK YOUR BIDS. THE FIRST POSTMARK WINS IN CASE OF A TIE BID.**
- 3) **ALL SALES ARE FOR CASH AND ARE PAYABLE IMMEDIATELY UPON RECEIPT OF THE INVOICE.**
- 4) **AUCTIONS ARE OPEN TO ALL AND NO DEPOSIT IS REQUIRED OR DESIRED.**
- 5) **NO UNLIMITED BIDS ARE ACCEPTED. WINNING BIDDERS WILL BE AWARDED LOT AT A 10% ADVANCE OVER THE SECOND HIGHEST BID. IF NO OTHER BIDS ARE RECEIVED FOR A LOT, THE BIDDER WILL BE AWARDED THE LOT AT THE MINIMUM BID, OR ESTIMATE IF NO MINIMUM IS GIVEN.**
- 6) **ALL ITEMS ARE GUARANTEED GENUINE. BIDDERS MAY RETURN ANY ITEM NOT AS DESCRIBED.**
- 7) **A \$1 HANDLING CHARGE WILL BE ADDED TO ALL WINNING INVOICES. BID EARLY AND BID OFTEN. THANKS! - LEN & JIM**

1	1878	DOLL	7 TAIL FEATHERS B1-REVERSE VAM-82 DISCONNECTED LEAF NGC	MS63	MB	\$135.00
2	1887 O	DOLL	VAM 1A CLASHED DIES (NOT ON HOLDER) FINEST KNOWN ANACS	MS63	MB	\$550.00
3	1884O/O	DOLL	VAM-10 SO CALLED "O/CC" HOT 50 ANACS	MS63	MB	\$180.00
4	1878	DOLL	VAM-8, STICK FEATHER HOT 50 NGC	AU58	MB	\$115.00
5	1883 O	DOLL	LONG DIE CRACK NECK TO 5TH STAR OBVERSE ICG	MS64	MB	\$69.50
6	1900 O	DOLL	VAM-15 DOUBLE STR TOP 100 ANACS	AU55	MB	\$55.00
7	1887	DOLL	VAM-11 STRONG REPUNCHED 1 & 7 IN DENTICLES BRILLIANT PCGS	MS65	MB	\$165.00
*	8 1979	DOLL	65% OFF CENTER & 40% INDENT 2 COIN MATED PAIR UNIQUE PCGS	MS64	MB	\$3,200.00
9	2000 D	DOLL	MINT WAFFLED + 85% BROCKAGED BY ANOTHER COIN DURING WAFFLE PROCESS NGC	UNC	MB	\$95.00
*	10 (2007)	DOLL	JOHN ADAMS, DOUBLE STRUCK BOTH OFF CENTER 20% + MEL + 10% INDENT PCGS	MS65	MB	\$2,400.00
11	(2009)	DOLL	NATIVE AMERICAN, MISSING EDGE LETTERING, DOUBLE STRUCK IN COLLAR 5 DEGREE ROTATION, ONE YEAR TYPE! PCGS	MS63	MB	\$760.00
12	2001 P	DOLL	U.S. MINT EXPERIMENTAL RINSE, ANTI TARNISHING AGENT PCGS	MS66	MB	\$95.00
*	13 2000 P	DOLL	DUAL DENOMINATION SAC DOLLAR ON MARTLAND QUARTER,IGWT ON BABY BLANKET + 2 DATES & MINT MARKS WOW!! NGC	MS64	MB	\$3,800.00
*	14 1976	HALF	65% OFF CENTER 4:30 CHAIN STRIKE, BE COOL TO FIND THE MATE PCGS	MS63	MB	\$950.00
15	1968 D	HALF	MISSING OUTER LAYER OBVERSE PCGS	MS62	MB	\$160.00
*	16 1976	HALF	DOUBLE STRUCK 2ND 40% OFF CENTER 6:00 DIE STRUCK REV. PERFECTLY SYMETRICAL WOWSER!	MS65	MB	\$3,400.00
*	17 1999	QUAR	NJ STRUCK ON NICKEL PLANCHET. RARE STATE. NICE LUSTROUS NGC	AU58	MB	\$1,450.00
18	1976	QUAR	50% CLAMSHELL SPLIT PLANCHET ATTACHED & TIPPED UP SLIGHTLY PCGS	AU58	MB	\$125.00
19	1999 P	QUAR	DOUBLE STRUCK, 2ND 70% OFF CENTER 4:00 UNIFACE REVERSE, GEORGIA PCGS	MS62	MB	\$365.00

20	1958	QUAR	TYPE B REVERSE FS-901, "PROOF" REVERSE HUB DESIGN ANACS	MS63	MB	\$32.50
21	1958	QUAR	TYPE B REVERSE FS-901, "PROOF" REVERSE HUB DESIGN ANACS	MS64	MB	\$37.50
22	1959	QUAR	TYPE B REVERSE FS-901, "PROOF" REVERSE HUB DESIGN ANACS	MS-6	MB	\$31.00
23	1959	QUAR	TYPE B REVERSE FS-901, "PROOF" REVERSE HUB DESIGN ANACS	MS64	MB	\$35.00
24	1961	QUAR	TYPE B REVERSE FS-901, "PROOF" REVERSE HUB DESIGN ANACS	MS63	MB	\$32.00
25	1963	QUAR	TYPE B REVERSE FS-901, "PROOF" REVERSE HUB DESIGN ANACS	MS63	MB	\$31.00
26	1964	QUAR	TYPE B REVERSE FS-901, "PROOF" HUB DESIGN ANACS	MS64	MB	\$36.00
*	27	2005 P	QUAR OR 22% DOUBLE CLIPPED PLANCHET OREGON, RARE MAJOR 2005 ERROR 25% 4:00 PCGS	MS63	MB	\$155.00
28	1964 D	DIME	DOUBLED DIE REVERSE DIE 1, VERY STRONG, KING OF DOUBLED DIES? ANACS	AU55	MB	\$145.00
29	1936	NICK	1% CLIPPED PLANCHET & PARTIAL COLLAR PCGS	MS64	MB	\$140.00
30	N.D.	NICK	JEFFERSON STRUCK 50% OFF CENTER ON COPPER CENT PLANCHET PCGS	AU58	MB	\$950.00
31	2006 P	NICK	STRUCK ON ELLIPTICAL PLANCHET 4 GRAMS 5 FULL STEPS VERY RARE ON NEW NICKELS NGC	AU58	MB	\$210.00
32	N.D.	NICK	SADDLE DOUBLE STRIKE ON STRAIGHT CLIP PLANCHET FORMER NEW ENGLAND COLLECTION NGC	MS66	MB	\$360.00
33	1999 P	NICK	DOUBLE STRUCK WITH 2 OBVERSE INDENTS GREAT EYE-APPEAL FULL STEPS NGC	MS66	MB	\$425.00
*	34	197(7)	NICK 30% PARTIAL BROCKAGE 6:00 REVERSE EDGE SCRAPE ANACS	AU50	MB	\$39.00
35	1962 D	NICK	ON THIN PLANCHET SPLIT BEFORE STRUCK ANACS	MS60	MB	\$55.00
36	1999 P	NICK	TRIPLE STRUCK & BROADSTRUCK, CLOSE OVERLAPPING ANACS	MS63	MB	\$65.00
37	N.D.	NICK	JEFFERSON STLT AFTER STRUCK REV ONLY ANACS	MS64	MB	\$55.00
*	38	1974 D	NICK STRUCK ON CENT PLANCHET 3.08 GRAMS (COPPER) NGCRED/BRN	MS63	MB	\$295.00
39	2000	CENT	MATED PAIR IN 2 SLABS 5% BROCKAGE AND 95% OFF CENTER DOUBLE STRIKE PCGS RED	MS65	MB	\$130.00
*	40	1999	CENT STRUCK ON STRUCK ON (1999 P) DIME, SUPEER STRONG FLIPOVER STRIKE NGC	MS66	MB	\$980.00
41	1915	CENT	STRUCK ON 75/25 COPPER NICKEL PLANCHET, EXPERIMENTAL PLANCHET PBGS	AU55	MB	\$3,600.00
*	42	1951 D	CENT BROADSTRUCK WITH REVERSE STRUCK THRU STRUCK FRAGMENT NGC RED/BRN	MS64	MB	\$360.00
43	N.D.	CENT	SPLIT BEFORE STRUCK INDENT + BROCKAGE NEAT TRIPLE ERROR ANACS RED/BRN	MS61	MB	\$75.00
*	44	N.D.	CENT BROADSTRIKE WITH 50% PARTIAL BROCKAGE 2:30, MUSHROOM SHAPE VERY LARGE SIZE ANACS RED	MS65	MB	\$69.00
*	45	1999	CENT DOUBLE STRUCK BROADSTRUCK OVERLAPPING STRONGLY DOUBLE LARGER HEAD THAN NICKEL ANACS RED	MS63	MB	\$45.00
*	46	N.D.	CENT WEAK DIE ADJUSTMENT STRIKE ANACS RE/BRN	MS60	MB	\$55.00
47	1971 D	CENT	5% OFF CENTER ON SPLIT PLANCHET 1.4 GRAMS PRETTY NEAT NGC	N.G.	MB	\$75.00
48	1919 S	CENT	STRUCK ON TAPERED THIN PLANCHET ANACS RED/BRN	MS62	MB	\$55.00
*	49	1953 D	CENT STRUCK IN RETAINED STAPLE REV. ANACS	AU50	MB	\$750.00
50	1959 D	CENT	DOUBKLE STRUCK, 2ND 80% OFF CENTER 1:00 UNIFAKE REVERSE ANACS RED/BRN	MS63	MB	\$65.00

51	(1999)	QUAR	1965 OR 1999 RARE MARTHA WASHINGTON TEST PATTERN QUARTER J2116 WAFFLED ANACS NON WAFFLED TRENDS \$20,000!	MS60	MB	\$1,450.00	
52	(1999)	HALF	1965 OR 1999 RARE MARTHA WASHINGTON TEST PATTERN HALF J2132 WAFFLED ANACS NON WAFFLED TRENDS \$20,000!	MS60	MB	\$1,850.00	
53	1979 P	DOLL	SBA SET OF 10 CUDS, 8 OF WHICH ARE THE PLATE COINS OF ALL SBA CUDS LISTED IN SAM THURMAN'S CUD COLLECTION BOOK	UNC	MB	\$6,400.00	
55	1981	\$50	IMPROPER INKING SPOTTED FACE	VF	MB	\$65.00	
56	1864	\$20	CONFEDERATE STATES OF AMERICA, BOTTOM OF NEXT ACROSS TOP	VF	MB	\$55.00	
57	1934 A	\$20	WORLD WAR 2 HAWAII WITH SCARCEGUTTER ACROSS LOWER LEFT CORNER	AU58	MB	\$395.00	
58	2004 A	\$20	MISSING THE GREEN SEAL	VF	MB	\$165.00	
*	59	1999	\$20	3RD PRINT SHIFTED TO LEFT TO EDGE OF NOTE	AU58	MB	\$395.00
60	1985	\$20	MISSING LEFT SEAL	AU	MB	\$125.00	
61	1974	\$20	WIDE DARK GREEN SMEAR RIGHT END REVERSE TOP TO BOTTOM	FIN	MB	\$150.00	
62	1981	\$20	FULL OFFSET REVERSE TO OBVERSE LIGHT GREEN	VF	MB	\$110.00	
63	1981 A	\$20	APROX 30% LEFT END OFFSET REVERSE ON OBVERSE, ROUND TEAR OUT TOP EDGE	EF	MB	\$35.00	
*	64	1974	\$10	16 NOTES, VERY UNUSUAL PROGRESSION OFFSET REVERSE TO OBVERSE RANDOM DIFFERENT AMOUNTS OF OFFSET STUDY PIECE	GEM	MB	\$650.00
65	2003	\$10	INSUFFICIENT INKING ON DISTRICT #	FIN	MB	\$23.00	
66	1977 A	\$10	1/8 INCH WIDE WHITE GUTTER TOP TO BOTTOM LEFT END OBVERSE	VF	MB	\$55.00	
67	1985	\$10	1/4 INCH WIDE OFFSET OBVERSE ON REVERSE RIGHT END	VF	MB	\$26.00	
68	1969 C	\$10	1/2 INCH WIDE OFFSET OBVERSE TO REVERSE DARK RIGHT END	AU	MB	\$35.00	
69	1950 A	\$5	2 NARROW GUTTER TOP TO BOTTOM OBVERSE & REVERSE	VF	MB	\$75.00	
70	1974	\$5	DARK GREEN INK SMEAR REVERSE TOP LEFT END + OTHERS	FIN	MB	\$39.00	
71	1969 C	\$5	3RD PRINTING SHIFTED TO RIGHT	FIN	MB	\$95.00	
*	72	1977	\$5	FED RESERVE NOTES, DARK GREEN SMEAR WIDE BOTTOM CENTER REVERSE	VF	MB	\$58.00
*	73	1974	\$5	F.R.N, INVERTED 3RD PRINT NEAT	VF	MB	\$250.00
74	1977	\$5	F.R.N, NARROW OFFSET FRONT ON BACK RIGHT END	AU	MB	\$22.00	
*	75	1977	\$5	F..R.N, COMPLETE MEDIUM DARK OFFSET OBVERSE ON REVERSE	CU	MB	\$225.00
76	1969 C	\$5	F.R.N, 1/2 INCH WIDE OFFSET LEFT END TOP TO BOTTOM	FIN	MB	\$22.00	
77	1977	\$5	F.R.N, INSUFFECIENT INK TOP TO BOTTOM NEAR CENTER	CU	MB	\$125.00	
*	78	1976	\$2	F.R.N, 3RD PRONT SHIFTED DOWN ONTO WASHINGTON, D.C	CU	MB	\$89.00
*	79	1917	\$1	LEGAL TENDER. GUTTER FOLD AROUND LOWER LEFT CORNER NEAT LARGE SIZE OLDIE PMG SLAB	VF	MB	\$395.00
*	80	1935 D	\$1	SILVER CERT, ONE SEAL AND SER # PRINTED SLANTED ON REV WITH LARGE BEP REJECTION STICKER ON FACE PCGS SLAB	CU	MB	\$1,450.00
*	81	1935 E	\$1	SILVER CERT, SUPER NEAT FOLDOVER WITH REJECTION CURLY PENCIL + RED STICKER CU	CU	MB	\$650.00
*	82	1935 A	\$1	SILVER CERT, HAWAII WW2, SHIFTED SEAL & NUMBERS	FIN	MB	\$95.00

83	1977	\$1	F.R.N, REVERSE OFFSET COMPLETE ON OBVERSE NICE MEDIUM DARK	CU	MB	\$110.00	
*	84	1969 C	\$1	F.R.N, LARGE FOLDOVER ALMOST IN TWO PART OF SEAL & NUMBERS ON REVERSE	CU	MB	\$460.00
	85	1969	\$1	F.R.N, MISMATCHED SERIAL NUMBERS F 689 & F 679 VERY RARE ON 1969	VF	MB	\$310.00
*	86	1963 A	\$1	F.R.N, SUPER NEAT BLANK HALF OF BACK ON DIAGONAL SHAPEWILD! PCGS PPQ	AU58	MB	\$650.00
*	87	1974	\$1	F.R.N, 3/8 INCH WIDE BLACK INK SMEAR TOP TO BOTTOM OBVERSE	CU	MB	\$72.00
*	88	1974	\$1	F.R.N, SUPER WILD FOLD OVER AFTER OBV & REV PRINTED SEE PHOTO	CU	MB	\$2,200.00
*	89	1988	\$1	F.R.N, LARGE GREEN INK SMEAR ACROSS REVERSE TOP HALF	FIN	MB	\$49.00
	90	1963	\$1	F.R.N, THIN WHITE GUTTER FOLD TOP TO BOTTOM ACROSS PORTRAIT	FIN	MB	\$22.00
*	91	1935 E	\$1	SILVER CERT, PRINTED FOLDOVER ON LOWER LEFT CORNER	VF	MB	\$210.00
	92	1985	\$1	F.R.N, FAULTY ALIEMENT LINE OF NEXT NOTE OBVERSE SMALL TEAR	VF	MB	\$65.00
*	93	1977	\$1	F.R.N, STRONGLY MISALIGNED 3RD PRINT GREEN SEAL TOUCHES CENTER CIRCLE	VF	MB	\$160.00
*	94	1969 C	\$1	F.R.N, STAR NOTE, MEDIUM OFFSET COMPLETE OBVERSE ON REVERSE	VF	MB	\$140.00
*	95	1974	\$1	F.R.N, MAJOR MISALIGNED 3RD PRINTING	FIN	MB	\$40.00
	96	1981 A	\$1	F.R.N, #129 ON BACK PLATE SMALLER AND ON WRONG SIDE REVERSE ENGRAVING ERROR	AU58	MB	\$35.00
	97	1988	\$1	F.R.N, COMPLETELY MISSING 3RD PRINT OBVERSE	AU58	MB	\$125.00
	98	1988 A	\$1	xxxxxxx F.R.N, DEFECTIVE PRINT OBVERSE, QUESTIONABLE ERROR	VF	MB	\$11,111.00
	99	2007	OTHER	SINGAPORE 2. WITH WRONG SECURITY STRIP	GEM	MB	\$25.00
	100	(1943)	OTHER	PHILIPPINE GUERRILLA MOUNTAIN PROVINCE ONE PESO NOTE BLANK BACK	VF	MB	\$20.00
	101	(1944)	OTHER	JAPANESE INVASION MONET WITH GUTTER FOLD REVERSE	FIN	MB	\$10.00
	102	(1943)	OTHER	JAPANESE INVASION MONEY WITH INK SMEAR	VF	MB	\$10.00
	103	2005	OTHER	PHILIPPINES 100 PISO LAST NAME IS MISSPELLED	CU	MB	\$10.00
	104	1877	DOLL	BROADSTRUCK + 100% PARTIAL COLLAR	GD	MB	\$250.00
	105	1878	DOLL	VAM 32, 7 OVER 8 TAIL FEATHERS	AG+	MB	\$32.50
	106	1880 O	DOLL	VAM 6, 8 OVER 7 IN DATE	AU	MB	\$99.00
	107	1880 O	DOLL	VAM 6, 8 OVER 7 IN DATE , LIGHTLY CLEANED	AU	MB	\$80.00
	108	1885 O	DOLL	REVERSE STRUCK THRU "BELLY BUTTON", CLEANED	AU	MB	\$39.00
	109	1888 S	DOLL	VAM 6A, PITTED REVERSE BRILLIANT	MS63	MB	\$399.00
	110	1896 O	DOLL	VAM 4, TILTED MICRO O	FIN	MB	\$39.50
	111	1921 D	DOLL	DIE CRACK 6:30 RIM TO CHIN & MOUTH VAM??	UNC	MB	\$55.00
	112	1886	DOLL	20 DEGREE ROTATED REVERSE , LIGHT SCRATCHES	VF	MB	\$39.00
	113	1886 O	DOLL	30 DEGREE ROTATED REV	VG	MB	\$75.00
	114	1889	DOLL	30 DEGREE ROTATED REVERSE	AU	MB	\$160.00
	115	1921	DOLL	RIM CLIP 4:00	EF45	MB	\$48.00
*	116	1904	DOLL	ROLLED IN SLAG 9:00 FRONT OF CHIN	AU55	MB	\$45.00
	117	1894 O	DOLL	MISALIGNED OBVERSE DIE	VG10	MB	\$47.00
	118	1921 S	DOLL	1 CENTMETER CRACKED PLANCHET 12:30	AU	MB	\$55.00
*	119	1888 O	DOLL	BROKEN PLANCHET 7:00 REVERSE (CHUNK BROKEN OFF EDGE)	VF	MB	\$39.00
	120	1879	DOLL	LAMINATION CRACK 1:00 TO 7:00	VF	MB	\$59.00
	121	188X O	DOLL	LAMINATION OUT AT DATE	MS64	MB	\$85.00
	122	1881	DOLL	LAMINATION OUT ABOVE WING REVERSE	EF	MB	\$36.00

123	1883	DOLL	LAMINATION TOP OF HEAD TO EDGE	EF45	MB	\$70.00
124	1887	DOLL	LAMINATION FRONT OF EYE OBVERSE	MS63	MB	\$57.00
*	125	1896	DOLL LAMINATION GONE OFF EDGE 2:00 TO 5:00	UNC	MB	\$65.00
126	1897 S	DOLL	LAMINATION OUT ABOVE WE TRUST	MS60	MB	\$69.00
127	1921	DOLL	LAMINATION OUT FRONT OF EYE OBVERSE	AU	MB	\$38.00
128	1887	DOLL	PARTIAL COLLAR	EF45	MB	\$325.00
129	1899 O	DOLL	STRUCK THRU REVERSE	MS64	MB	\$99.00
*	130	1921	DOLL STRUCK THRU REVERSE OVER "ONNE" 7:00	MS62	MB	\$49.00
131	1921	DOLL	STRUCK THRU REVERSE OVER "STATES"	EF	MB	\$35.00
132	1885	DOLL	MULTIPLE DIE CLASHES OBVERSE & REVERSE, FACE PROFILE ON REVERSE	AU	MB	\$89.00
133	1923 D	DOLL	STRONG CIRCULAR DIE CRACK AROUND OBVERSE , CLEANED	EF	MB	\$36.00
*	134	1924	DOLL MAJOR FILLED DIES CENTER OF HEAD	CHBU	MB	\$95.00
135	1922	DOLL	LAMINATION REVERSE	AU	MB	\$35.00
*	136	1923 S	DOLL LARGE LAMINATION OUT 7:30 ACROSS NECK	FN15	MB	\$72.00
137	1935	DOLL	LAMINATION 4:00 REVERSE	EF45	MB	\$45.00
138	1922	DOLL	LAMINATION OBVERSE & REVERSE	MS64	MB	\$70.00
139	1922 S	DOLL	EXTRA METAL EDGE 4:30 REVERSE	MS60	MB	\$42.00
140	1924	DOLL	PLANCHET CRACK 6:30	MS53	MB	\$44.00
141	1922	DOLL	BROKEN PLANCHET 8:30	AU	MB	\$33.00
142	1923	DOLL	EMBEDD EXTRA METAL 8:30 REVERSE	MS63	MB	\$42.00
143	1923 D	DOLL	CUD OVER Y OBVERSE 2:30	AU58	MB	\$99.00
144	1921	DOLL	RIM CUD 3:00 OBVERSE	EF	MB	\$150.00
145	1923	DOLL	DROPPED "O" FROM GOD	AU58	MB	\$99.00
146	1922	DOLL	CRACK THRU PLANCHET 10:00	FIN	MB	\$32.00
147	1925	DOLL	DISK CLIP 1:00	AU	MB	\$32.00
148	1923	DOLL	VAM 1A2 WISKERED JAW R7 SUB VARIETY WITH DIE CRACK	BU	MB	\$255.00
149	N.D.	DOLL	TYPE 2 CLAD IKE PLANCHET	UNC	MB	\$115.00
*	150	1971 S	DOLL PEG LEG "R"	UNC	MB	\$15.00
151	1996	ASE	LAMINATION BUBBLES REVERSE 4:30 TO 6:30	BU	MB	\$55.00
152	1987	ASE	DIE TRIAL VERY WEAK CENTER OBVERSE	BU	MB	\$48.00
153	1987	ASE	DIE TRIAL VERY WEAK CENTER	BU	MB	\$48.00
154	N.D.	DOLL	TYPE 2 PRESIDENTAL GOLDEN DOLLAR	BU	MB	\$42.00
155	N.D.	DOLL	TYPE 2 PRESIDENTAL GOLDEN DOLLAR SCRATCH & SLIGHT BEND	BU	MB	\$18.00
156	N.D.	DOLL	AS LOT 155 LOT OF 10 COINS	BU	MB	\$140.00
*	157	2000 P	DOLL 3% CURVED CLIP 12:00	BU	MB	\$55.00
158	2007	DOLL	JOHN ADAMS, DOUBLE EDGE LETTERING OVERLAPPING DATES NEXT TO EACH OTHER	BU	MB	\$65.00
159	2009 P	DOLL	POLK, EXTREMELY WEAK EDGE LETTERING	BU	MB	\$5.00
160	2007 P	DOLL	J. ADAMS, DOUBLE EDGE OVERLAPPED DTES, JXTAPOSED	BU	MB	\$49.00
161	1840 O	HALF	NARROW O MINT MARK BREEN #4751	GD	MB	\$55.00
162	1843	HALF	RETAINED CUD REVERSE	GD	MB	\$75.00
163	1846 O	HALF	CUD FROM RIM TO "UN" REVERSE	GD+	MB	\$85.00
164	1854 O	HALF	RETAINED CUD OVER "ICA" REVERSE FEW LIGHT SCRATCHES	GD	MB	\$49.00
165	1956 O	HALF	REPUNCHED DATE EXTRA KNOB ON 6 BREEN #4868 SMALL REVERSE SCRATCH	GD	MB	\$49.00
166	1941 D	HALF	DIE CRACK REVERSE	AU	MB	\$20.00
167	1943 D	HALF	DOUBLED DIE OBVERSE	AU	MB	\$25.00
168	1936	HALF	DIE EROSION OBVERSE & REVERSE	FIN	MB	\$14.00
169	1961	HALF	DOUBLED DIE REVERSE	PRF	MB	\$20.00
170	1955	HALF	BUGGS BUNNY VARIETY	BU	MB	\$35.00
171	N.D.	HALF	TYPE 2 40% SILVER PLANCHET	UNC	MB	\$120.00
172	N.D.	HALF	TYPE 1 CLAD BLANK	UNC	MB	\$55.00

173	N.D.	HALF	TYPE 2 CLAD PLANCHET	UNC	MB	\$60.00	
*	174	1979	HALF	HUGE UNCENTERED BROADSTRIKE LOOKS 10% OFF CENTER 3:00	UNC	MB	\$150.00
	175	1983 P	HALF	UNCENTERED BROADSTRIKE SLIGHT PARTIAL COLLAR	BU	MB	\$69.00
	176	1974	HALF	LARGE BROADSTRIKE GEMMY WITH COUNTER SKID BACK OF HEAD	BU	MB	\$69.00
	177	1983 P	HALF	NO "FG" INITIALS REVERSE RARE DATE	AU59	MB	\$49.00
	178	1982	HALF	NO "F" INITIAL REVERSE	UNC	MB	\$10.00
	179	1996 P	HALF	OBVERSE STRUCK THRU GREASED DIES	BU	MB	\$6.00
*	180	1966	HALF	STRUCK THRU ACROSS DATE	MS63	MB	\$24.00
	181	1971	HALF	MISALIGNED OBVERSE DIE	MS63	MB	\$7.00
*	182	1976	HALF	UNCENTERED BROADSTRIKE	AU	MB	\$89.00
	183	1976 D	HALF	2 COIN LOT, STRUCK THRU OVER "HALL" REVERSE	AU	MB	\$3.00
	184	1964	HALF	DOUBLED DIE OBVERSE AT DATE	PRF	MB	\$18.00
	185	1964 D	HALF	TRIPLED DIE OBVERSE PUP: IGWT	BU	MB	\$35.00
	186	1964 D	HALF	DOUBLED DIE OBVERSE PUP: IGWT	BU	MB	\$20.00
	187	1964 D	HALF	DOUBLED DIE I-O-V WIDE	AU	MB	\$15.00
	188	1964 D	HALF	DOUBLED DIE WIDE I-O-V	EF	MB	\$12.00
	189	1964 D	HALF	DOUBLED DIE WIDE I-O-V	VF	MB	\$10.00
	190	1964 D	HALF	DOUBLED DIE OBVERSE UNLISTED	UNC	MB	\$15.00
	191	1968 D	HALF	DOUBLED DIE OBVERSE/REVERSE SHOWS ON WE	BU	MB	\$4.00
	192	1968 S	HALF	DOUBLING REVERSE	PRF	MB	\$5.00
	193	1969 S	HALF	DOUBLED DIE REVERSE	PRF	MB	\$5.00
	194	1970 S	HALF	DOUBLED DIE SHOWS IN IN GOD & 70 OF DATE	PRF	MB	\$10.00
	195	1971 S	HALF	DOUBLED DIE IN LIB, DOUBLE MINT MARK	PRF	MB	\$10.00
	196	1876 CC	QUAR	MAJOR REVERSE DIE BREAK 3:00 TO 11:00	VG	MB	\$76.00
	197	1899 S	QUAR	VERY LARGE DIE BREAK NEAR MINT MARK	FN+	MB	\$69.00
	198	1957	QUAR	TYPE 2 PROOF REVERSE FS-901	AU	MB	\$10.00
	199	1957	QUAR	TYPE B PROOF REVERSE	AU	MB	\$10.00
	200	1958	QUAR	TYPE B PROOF REVERSE	UNC	MB	\$10.00
	201	1958	QUAR	TYPE B REVERSE FS-901	BU	MB	\$18.00
	202	1959	QUAR	TYPE 2 REVERSE FS-901	BU	MB	\$17.50
	203	1960	QUAR	TYPE B PROOF REVERSE	BU	MB	\$12.00
	205	1961	QUAR	TYPE B PROOF REVERSE FS-901	EF	MB	\$9.50
	206	1962	QUAR	TYPE 2 PROOF REVERSE FS-901	UNC	MB	\$19.00
	207	1963	QUAR	TYPE 2 PROOF REVERSE FS-901	BU	MB	\$17.50
	208	1964	QUAR	TYPE 2 PROOF REVERSE FS-901	BU	MB	\$17.50
	209	1941 S	QUAR	LARGE S MINT MARK FS-503	VG	MB	\$7.50
	210	N.D.	QUAR	TYPE 2 CLAD PLANCHET	UNC	MB	\$4.00
	211	N.D.	QUAR	98% OFF CENTER	BU	MB	\$32.00
	212	1935	QUAR	CRACKED PLANCHET 9:00	MS63	MB	\$24.00
*	213	N.D. P	QUAR	MAJOR CUD OVER DATE	EF	MB	\$32.00
	214	1946	QUAR	DOUBLED DIE OBVERSE PUP: IGWTU	UNC	MB	\$15.00
	215	1964 D	QUAR	LARGE LAMINATION BACK OF HEAD OBVERSE	AU	MB	\$10.00
	216	1993 P	QUAR	SUPER STRONG MACHINE DOUBLING OF MOTTO	BU	MB	\$6.00
	217	ASST	QUAR	LOT OF 7 COINS WITH MACHINE DOUBLING	CIRC	N	\$3.50
*	218	1976	QUAR	4% CLAD LAYER SPLIT OFF REVERSE 1:00	UNC	MB	\$99.00
*	219	1974 D	QUAR	40% INDENT 2:00	BU	MB	\$95.00
	220	1942	QUAR	1% CLIP 10:30 +360 DEGREE PARTIAL COLLAR	AU	MB	\$55.00
	221	1940 D	QUAR	DOUBLED DIE OBVERSE FS-101	VF	MB	\$35.00
	222	1999 D	QUAR	DELAWARE, REVERSE ROTATED 170 DEGREES	UNC	MB	\$110.00
*	223	1999 P	QUAR	GEORGIA, 15% OFF CENTER 1:00	BU	MB	\$50.00

* 224	2005 D	QUAR	KANSAS, ELLIPTICALLY CLIPPED PLANCHET 23mm BU WIDE	MB	\$230.00
225	2005 D	QUAR	OREGON, REVERSE CLAD LAYER OFF BEFORE STRUCK, RARE DATE	UNC MB	\$560.00
* 226	2007 D	QUAR	UTAH, STRUCK ON ELLIPTICALLY CLIPPED PLANCHET	AU58 MB	\$135.00
227	2004 D	QUAR	WISCONSIN, LOT OF 4 COINS WITH EXTRA LOW LEAF	AU MB	\$280.00
228	2001 P	QUAR	KENTUCKY, 3% OFF CENTER WITH PARTIAL COLLAR	MS63 MB	\$35.00
229	1875 CC	DIME	RETAINED CUD REVERSE 7:00	VG+ MB	\$75.00
* 230	1911 D	DIME	MAJOR STRUCK THRU 12:00 TO 2:00	FR MB	\$12.00
* 231	1936	DIME	RIM CLIP 11:00	AU MB	\$5.00
232	1941 S	DIME	RPM #1 FS-501	VF MB	\$7.50
233	1941 S	DIME	TRUMPET TAIL LARGE S DIE 2 FS-511	FIN MB	\$10.00
234	1943 D	DIME	LAMINATION REVERSE	EF MB	\$3.00
235	N.D.	DIME	TYPE 2 SILVER PLANCHET WITH SMALL RAGGED CLIP + LAMINATION STREAK	BU MB	\$23.00
* 236	N.D.	DIME	SEPARATED DOUBLE STRUCK UNIFACE OBVERSE	UNC MB	\$65.00
* 237	1969 D	DIME	DOUBLE STRUCK, 2ND 85% OFF CENTER 6:00 UNIFACE OBVERSE	UNC MB	\$36.00
238	1955 S	DIME	NICE CLASHED DIE REVERSE	BU MB	\$4.50
* 239	1970 S	DIME	40% PARTIAL BROCKAGE 2:00	AU58 MB	\$45.00
240	1949 DI	DIME	DIE CHIP REVERSE 6:30	VF MB	\$3.00
241	1964 D	DIME	STRUCK THRU GREASE REVERSE	MS64 MB	\$3.00
242	1947	DIME	S OVER D MINT MARK #2 FS-502	MS60 MB	\$65.00
* 243	1946 S	DIME	STRUCK ON NICE FOOTBALL SHAPE ELLIPTICAL CLIPPED PLANCHET WITH PARTIAL BROCKAGE ON SILVER DIME	AU58 MB	\$250.00
244	1947 S	DIME	SANS SERIF S MINT MARK	MS63 MB	\$6.50
245	1948	DIME	RIM TO TORCH DIE CRACK 5:00	BU MB	\$4.50
246	1987 D	DIME	LARGE DIE BREAK NECK ABOVE DATE	UNC MB	\$22.00
247	1968 D	DIME	RIM CLIP 12:30	AU MB	\$4.00
* 248	1957	DIME	3% CURVED CLIP 5:00	AU MB	\$2.50
249	1960 D	DIME	RPM #1	FIN MB	\$4.00
250	1964 D	DIME	RPM #2	AU MB	\$7.00
251	1964 D	DIME	RPM #2	BU MB	\$9.50
252	1970 D	DIME	REVERSE OF 1968 FS-901	UNC MB	\$15.00
* 253	1970 D	DIME	DOUBLE STRUCK NO ROTATION DIE TRIAL	AU59 MB	\$45.00
254	1959 D	DIME	D OVER D UNLISTED RPM EXTRA LOOP OF D INSIDE D	BU MB	\$4.50
255	1985 D	DIME	WORN DIES FLAT RIM	AU MB	\$1.00
256	1964 D	DIME	POINTED 9 VARIETY	AU MB	\$3.50
257	1994 P	DIME	BROADSTRUCK OFF CENTER	MS66 MB	\$6.00
258	1985 D	DIME	MISALIGNED OBVERSE DIE	MS64 MB	\$3.00
259	1978 P	DIME	5% OFF CENTER WITH PARTIAL COLLAR	BU MB	\$4.00
260	1977 P	DIME	TILTED COLLAR [F-2	BU MB	\$5.00
261	1996	DIME	PARTIAL COLLAR	MS63 MB	\$14.00
262	1964	DIME	STRUCK ON 48 GRAINS THICK PLANCHET	AU53 MB	\$95.00
* 263	1973	DIME	40% OFF CENTER 1:00	BU MB	\$35.00
* 264	1974 D	DIME	73% OFF CENTER 10:00 UNIFACE REVERSE	UNC MB	\$32.00
* 265	1979	DIME	65% OFF CENTER 1:00	BU MB	\$32.00
266	1979 P	DIME	40% OFF CENTER 12:00	BU MB	\$26.00
* 267	1983 D	DIME	55% OFF CENTER 12:30	BU MB	\$26.00
268	1991 P	DIME	55% OFF CENTER 12:00	BU MB	\$24.00
269	1994 P	DIME	3% OFF CENTER 1:00	MS63 MB	\$6.00
270	199x P	DIME	15% OFF CENTER 5:00	MS65 MB	\$7.00
271	1970 D	DIME	50% OFF CENTER 8:30 SLIGHT COUNTER SKID	UNC MB	\$35.00

272	N.D.	DIME	80% OFF CENTER UNIFACE OBV & REV	UNC	MB	\$22.00
273	N.D.	DIME	80% OFF CENTER 1:00 UNIFACE OBVERSE	UNC	MB	\$85.00
274	1872	H10c	STRONG DOUBLED DIE OBVERSE FS #4	VF	MB	\$85.00
275	1897	NICK	REPUNCHED DATE FS-301	VG	MB	\$12.00
*	276	1908	NICK STRUCK ON DEFECTIVE PLANCHET RAGGED EDGE CLIP	AU55	MB	\$95.00
277	1886	NICK	REVERSE CUD ABOVE "AMERICA" KEY DATE	GD	MB	\$235.00
*	278	1883	NICK NO CENTS MAJOR PLANCHET CHIPS OBV & REV	FN15	MB	\$8.00
279	ASST	NICK	LOT OF 7 BUFFALO ERRORSIN 2X2 HOLDERS	CIRC	MB	\$7.00
280	1924 D	NICK	ROTATED REVERSE 40 DEGREES	VF30	MB	\$95.00
281	1925 D	NICK	30 DEGREE ROTATED REVERSE, OBVERSE LAMINATION	GD	MB	\$10.00
282	1926 D	NICK	40 DEGREE ROTATED REVERSEGD	GD	MB	\$13.00
*	283	1935	NICK 8% RAGGED CLIP 12:00	VG8	MB	\$42.00
*	284	1921 S	NICK LARGE 6X2mm STRUCK THRU ON HEAD	GD	MB	\$49.00
285	1931 S	NICK	RPM #1	VG	MB	\$22.00
286	1938 D	NICK	RPM #2	VG	MB	\$3.50
287	192X	NICK	FILLED DIE ON LAST DIGIT IN DATE	VF	MB	\$4.00
288	N.D.	NICK	STRUCK THRU GREASE BUFFALO	VF	MB	\$5.00
289	1913	NICK	TYPE 2, DIE CLASH (PART OF E PLURB)	AU	MB	\$29.00
290	1916 D	NICK	LAMINATION ON FACE	FIN	MB	\$21.00
291	1918 S	NICK	LAMINATION 2:30	FN15	MB	\$45.00
292	1923 S	NICK	LAMINATION 8:00 REVERSE	GD	MB	\$5.00
293	1925 D	NICK	LAMINATIONS OBV & REV	GD	MB	\$8.00
294	1930 S	NICK	LAMINATION REVERSE 9:00	FN15	MB	\$2.00
*	295	1935	NICK LAMINATION ON FOREHEAD	GD	MB	\$3.00
296	2005	NICK	BUFFALO WITH DETACHED LEG	BU	MB	\$12.50
297	1981	NICK	CENTERED BROADSTRUCK	BU	MB	\$10.00
298	1964	NICK	CENTERED BROADSTRIKE SCRATCH 9 TO 12:00F	FIN	MB	\$5.00
299	1995	NICK	UNCENTERED BROADSTRIKE STEPS	MS64	MB	\$9.00
300	1981	NICK	MISALIGNED OBVERSE DIE	MS63	MB	\$8.00
301	1938 S	NICK	LAMINATION CRACK IN PLANCHET 2:30	VF	MB	\$2.00
*	302	1944 P	NICK SILVER LAMINATION OBV & REV	FIN	MB	\$4.00
303	1968 D	NICK	STRUCK THRU HEAVY GREASE OBV & REV	MS64	MB	\$19.00
304	1965	NICK	VERY STRONG CLASHED DIES OBV & REV	BU	MB	\$15.00
305	1964 D	NICK	DOUBLE CLIP 4:00 & 10:00	EF	MB	\$2.00
*	306	1964 D	NICK STRUCK THRU 12mm FOLDED STRONG REVERSE	AU58	MB	\$6.50
*	307	1981 D	NICK DOUBLE STRUCK, 85% OFF CENTER 10:00 UNIFACE REVERSE	UNC	MB	\$29.00
*	308	1971 D	NICK STRUCK ON CENT PLANCHET	MS63	MB	\$240.00
*	309	1881	NICK 25% PARTIAL BROCKAGE 5:30	UNC	MB	\$55.00
310	1954 S	NICK	S OVER D RPM 1b	VG+	MB	\$2.00
311	1984 P	NICK	CUD BASE OF BUST 5:00 RIM CUDS OBV & REV + HEAVY DIE CLASH	UNC	MB	\$35.00
*	312	1975	NICK 40% OFF CENTER 12:00	UNC	MB	\$35.00
313	1939	NICK	DOUBLED DIE REVERSE	FIN	MB	\$6.00
314	1939	NICK	TRIPLED DIE REVERSE	PRF	MB	\$100.00
315	1944	NICK	NO REVERSE MINT MARK NON SILVER FAKE EDUCATIONAL	FIN	MB	\$30.00
316	N.D.	NICK	70% OFF CENTER UNIFACE OBVERSE 2:30	BU	MB	\$22.00
317	1982 P	NICK	60% OFF CENTER 9:30	BU	MB	\$32.00
318	1983 P	NICK	30% OFF CENTER 11:00 FULL STEPS	BU	MB	\$19.00
*	319	1975 P	NICK 44% OFF CENTER 10:30	BU	MB	\$39.00
320	1977 P	NICK	65% OFF CENTER 11:00	BU	MB	\$32.00
321	1978 D	NICK	70% OFF CENTER 11:00	UNC	MB	\$45.00
322	1979 P	NICK	50% OFF CENTER 11:30	UNC	MB	\$24.00
323	N.D.	NICK	40% OFF CENTER 2:30 NEAT STRETCHED LETTERING FROM 60's	BU	MB	\$22.00

324 1865	NIK3c	REVERSE DIE CLASH , OBVERSE RIM CUD , ROTATED REVERSE 165 DEGREES	AU	MB	\$130.00
----------	-------	--	----	----	----------



27



17



17



45



46



50



42



40



40



44



34



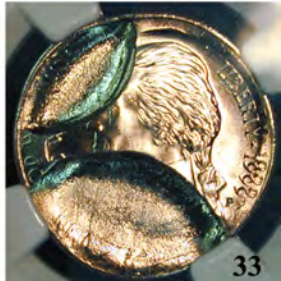
38



32



49



33



59



64



72



80



79



81



73



75



77



78



88



91



82



84



87



86



89



93



94



95

**SUBSCRIPTION FOR THE YEAR 2013
DON'T MISS ANY OF THESE SALES!
SEMI-MONTHLY ERROR CATALOGS PUBLISHED FOR THE PAST 27 YEARS!**

THE SUBSCRIPTION PRICE IS \$8.00 FOR SIX CATALOGS ON A SEMI-MONTHLY BASIS. COST OF PRINTING AND MAILING THE LAST CATALOG WAS \$2.06 EACH. WE DON'T MIND SENDING CATALOGS TO COLLECTORS OF CATALOGS IF YOU SHARE IN THE COST OF THE CATALOGS.

WE WILL AUTOMATICALLY BILL \$8.00 SUBSCRIPTION DUES TO ALL WINNING BIDERS WHO HAVE NOT YET PAID UNLESS OTHERWISE PAID OR INFORMED.

WE HAVE A FULL SERVICE COIN & STAMP STORE THAT IS LOCATED IN HILLDALE MALL IN MADISON, WI. PLEASE FEEL FREE TO STOP BY IF YOU ARE IN TOWN.

WE ARE ALSO ENTHUSIASTIC BUYERS OF ALL ERRORS AS WELL AS NORMAL COINS, STAMPS AND COLLECTIBLE RED/BLUE BOOKS!

PLEASE VISIT OUR WEB SITE AT www.Jimcoins.com MANY OF THE PHOTOS IN THE WEB SITE VERSION ARE *FULL COLOR*.

NEW PROGRAM: FREE CONECA MEMBERSHIP UPON REQUEST FOR NEW MEMBERS WITH WINNING BIDS TALLING \$50 OR MORE.

CONSIGNORS: GETTING TOUGHER TO FIND ERRORS TO FILL THE AUCTIONS. IF YOU HAVE SOME TO SELL OR CONSIGN, PLEASE LET US KNOW. TERMS ARE 15% COMMISSION, YOU SET THE MINIMUM BID AND NO CHARGE IF THE COIN DOES NOT SELL. ALSO BID GENEROUSLY SO WE CAN AFFORD TO BUY SOME MORE. HEH-HEH. -LEN & JIM

NOTES FOR J-58: LAST SALE WAS A TREMENDOUS SUCCESS, THANKS TO ALL WHO PARTICIPATED AND WELCOME NEW BIDDERS AND SUBSCRIBERS! REMEMBER IF YOU NEED EXTRA CASH TO BID OR FOR CHRISTMAS, WE WILL BUY OR AUCTION YOUR DUPLICATE ERRORS AND EVEN NORMAL COINS. CALL WITH DETAILS OR COME BY AND SEE JIM AT THE FUN SHOW -LEN & JIM

NAME _____

ADDRESS _____

CITY _____ STATE _____ ZIP _____

PHONE (OPTIONAL) _____

YOUR ADDRESS LABEL HAS A YEAR ON IT SO YOU WILL KNOW WHEN YOUR SUBSCRIPTION EXPIRES.

THANKS AGAIN TO ALL OF YOU! -LEN & JIM



116



119



125



130



134



136



150



157



174



180



182



213



218



219



223



224



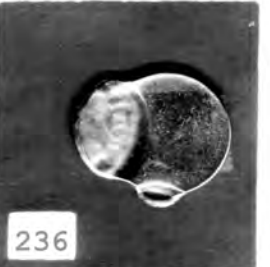
226



230



231



236



237



239



243



248



253



263



264



265



267



276



278



283



284



295



302



306



307



308



309



312



319



344



370



371



373



375



398



399



400



402



403



404



405

325	1864	2CENT	RIM BURR (SCARCE ERROR)	GD4	MB	\$35.00	
326	ASST	CENT	LOT OF 75 WHEAT CENT MIXED ERRORS IN 2X2 HOLDERS	ASST	MB	\$20.00	
327	ASST	CENT	LOT OF 17 CENTS ALL CLIP ERRORS IN 2X2 HOLDERS	ASST	MB	\$12.00	
328	ASST	OTHER	LOT OF 5 COINS 2 CENTS, 2 NICKS, 1 QUARTER & 1 HALF TYPE 2 BLANK PLANCHETS	ASST	MB	\$15.00	
329	ASST	CENT	LOT 5 DIFFERENT MEMORIALS RPM'S	EF	MB	\$6.25	
330	1953 D	CENT	LOT 5 COINS 1953 D RPM #1 FS-501 ALL	VF	MB	\$10.00	
331	ASST	CENT	LOT 5 DIFFERENT WHEATS RPM's	VF	MB	\$6.75	
332	1955 S	CENT	RPM #4 ALL DIFFERENT STAGES ALL	BU	MB	\$12.50	
333	ASST	CENT	LOT 10 DIFFERENT MEMORIALS ALL RPM's	BU	MB	\$20.00	
334	ASST	CENT	LOT 4 DIFFERENT MEMORIALS RPM's	BU	MB	\$6.00	
335	ASST	CENT	LOT 5 DIFFERENT RPM's	EF	MB	\$7.00	
336	1804	1/2C	C-9 LATE OBVERSE CUD 12:00 TO 1:00	GD	MB	\$68.00	
337	1808	1/2C	C-3 REVERSE ROTATED 190 DEGREES	FIN	MB	\$120.00	
338	N.D.	CENT	LARG CENT TYPE 2 PLANCHET WITH LIGHT OLD SCRATCHES ONE SIDE NICE CHOCOLATE BROWN	EF	MB	\$80.00	
339	1800	CENT	REPUNCHED DATE 1800/179 LATE REVERSE CUD S-194 R-3	AG	MB	\$100.00	
340	1818	CENT	90 DEGREE ROTATED REVERSE	VG	MB	\$90.00	
341	1832	CENT	VERY STRONG DOUBLED PROFILE SCARCE	GD	MB	\$37.00	
342	1846	CENT	RETAINED LAMINATION FLAP REV 10:00	VF	MB	\$26.00	
343	1854	CENT	90 DEGREE ROTATED REVERSE EXTREMELY RARE CORROSION	GD	MB	\$28.00	
*	344	1863	CENT	117/420 CIVIL WAR TOKEN LARGE OBVERSE CUD	VG	MB	\$32.00
345	1863	CENT	117/420 CIVIL WAR TOKEN NICE LARGE CUD	VF	MB	\$45.00	
346	1857	CENT	SNOW-16, MISPUNCHED DATE + TEARDROP ON WING	EF	MB	\$260.00	
347	1858	CENT	SMALL LETTERS, ROTATED REVERSE 45 DEGREE	GD	MB	\$20.00	
348	1863	CENT	NICE MISALIGNED DIE OBVERSE	VG	MB	\$35.00	
349	1864	CENT	65 DEGREE ROTATED REVERSE	VG10	MB	\$38.00	
350	1873	CENT	CLOSED 3	GD	MB	\$18.00	
351	1886	CENT	FEATHER BETWEEN C9 TYPE 2	GD	MB	\$3.50	
352	1905	CENT	PLANCHET CRACK LAMINATION	EF	MB	\$7.00	
353	N.D.	CENT	COPPER TYPE 2 PLANCHET	UNC	MB	\$4.00	
354	N.D.	CENT	80% CURVED CLIP ON TYPE 1 BLANK COPPER	UNC	MB	\$42.00	
355	N.D.	CENT	ZINC TYPE 2 PLANCHET	UNC	MB	\$0.50	
356	1909VDB	CENT	FILLED DIE NO L IN LIBERTY	VG10	MB	\$12.00	
357	1911	CENT	MISALIGNED DIE OBVERSE	FN15	MB	\$2.00	
358	1920	CENT	MISALIGNED DIE OBVERSE	FIN	MB	\$7.00	
359	1974 D	CENT	8% MISALIGNED DIE	UNC	MB	\$4.50	
360	1913 D	CENT	LARGE LOST LAMINATION 1:00 TO 3:30 REVERSE EDGE	VG	MB	\$4.00	
361	1914	CENT	WIDE PLANCHET PELL REVERSE BEFORE STRIKE 2:00 TO 7:00	GD	MB	\$3.00	
362	1914 S	CENT	LAMINATION LOST ACROSS NECK OBVERSE	GD6	MB	\$23.00	
363	1917	CENT	LAMINATIONS OBVERSE & REVERSE	VG	MB	\$3.00	
364	1918 D	CENT	MAJOR PLANCHET FLAKES BEFORE STRIKE OBV & REV, FILLED DIE "LIB"	GD6	MB	\$4.00	
365	1921 S	CENT	MAJOR LAMINATIONS OBV & REV	FN15	MB	\$5.00	
366	1930	CENT	MAJOR PLANCHET LAMINATIONS REVERSE	VG	MB	\$2.00	
367	1916	CENT	RAILROAD RIMS + STRUCK THRU OBVERSE	VG	MB	\$6.00	
368	1924 S	CENT	BROKEN OBVERSE DIE AROUND RIM	VF	MB	\$6.00	
369	1961	CENT	DOUBLE STRUCK, 2ND 95% OFF CENTER 4:00 UNIFACE REVERSE VERY RARE DATE	AU	MB	\$190.00	
*	370	1968	CENT	BROADSTRUCK + DOUBLE STRUCK, 95% OFF CENTER 8:30 TOUGH DATE	UNC	MB	\$65.00

* 371	1970 S	CENT	DOUBLE STRUCK, 2ND 85% OFF CENTER 1:00, 2 DATES & MINT MARKS UNIFACE REVERSE	BU	MB	\$295.00
372	1972 S	CENT	DOUBLE STRUCK, 2ND 90% OFF CENTER 2:00 UNIFACE REVERSE	UNC	MB	\$150.00
* 373	1978 D	CENT	DOUBLE STRUCK, 2ND 60% OFF CENTER 11:00 UNIFACE REVERSE	UNC	MB	\$95.00
374	1984	CENT	DOUBLE STRUCK, 2ND 60% OFF CENTER 9:00 UNIFACE REVERSE	BU	MB	\$65.00
* 375	1990	CENT	DOUBLE STRUCK, 2ND 70% OFF CENTER 11:00 2 FULL DATES, DIE STRUCK BOTH SIDES (DSBS)	BU	MB	\$150.00
376	1955	CENT	DOUBLED DIE REVERSE II-B-R	PRF	MB	\$25.00
377	1959	CENT	DOUBLED DIE REVERSE	PRF	MB	\$17.00
378	1964	CENT	DOUBLED DIE REVERSE II-R-V-, DDR-029	PRF	MB	\$25.00
379	1970 S	CENT	DOUBLED DIE OBVERSE, PUP LIBERTY SMALL DATE	UNC	MB	\$25.00
380	1970 S	CENT	DOUBLED DIE OBVERSE, PUP ST IN TRUST	PRF	MB	\$10.00
381	1965	CENT	LOT OF 3 COINS, DOUBLED DIE REVERSE, II-B-VI-R	BU	MB	\$1.00
382	1969 S	CENT	DOUBLED DIE OBVERSE PUP VDB	UNC	MB	\$3.00
383	1969 S	CENT	DOUBLED DIE OBVERSE PUP IGWT	PRF	MB	\$10.00
384	1970 S	CENT	DOUBLED DIE OBVERSE PUP DATE (PUP= PICK UP POINT)	PRF	MB	\$5.00
385	2009	CENT	STRONG DOUBLE THUMB CONECA #1	BU	MB	\$4.50
386	2009	CENT	SUPER STRONG DOUBLE THUMB CONECA #2	BU	MB	\$15.00
387	2009	CENT	STRONG DOUBLE THUMB CONECA \$3	BU	MB	\$3.50
388	1945 D	CENT	LOT OF 7 COINS, DIE CRACK HEAD TO RIM	BU	MB	\$3.00
389	1918	CENT	OBVERSE & REVERSE LAMINATIONS	VG	MB	\$0.50
390	1940	CENT	MAJOR LOST LAMINATION BEFORE STRUCK	FN15	MB	\$3.00
391	1950 S	CENT	MAJOR LAMINATION DEEP REVERSE	FIN	MB	\$9.00
392	1959	CENT	LAMINATION CLAM-SHELL + CLIP	VF	MB	\$5.00
393	1931	CENT	OBVERSE SPLIT PLANCHET	VG10	MB	\$2.00
394	1943	CENT	DIE EROSION OORANGE PEEL EFFECT OBV & REV	MS66	MB	\$25.00
395	1958	CENT	DIE ADJUSTMENT STRIKE STRIATED REVERSE PLANCHET	AU	MB	\$32.00
396	1994	CENT	BROKEN EDGE REV 3-5:00	AU	MB	\$3.00
397	1970 S	CENT	3% CLIP + RIM CLIP RED	MS64	MB	\$9.00
* 398	1970 S	CENT	5%,10%, RIM CLIPS	BU	MB	\$12.00
* 399	1964 D	CENT	STRUCK ON SILVER DIME PLANCHET	EF	MB	\$295.00
* 400	1968	CENT	STRUCK ON DIME PLANCHET RARE DATE	MS63	MB	\$495.00
401	1919 S	CENT	MULTIPLE RIM CUDS	AU55	MB	\$20.00
* 402	N.D.	CENT	NEAT LARGE CUD COVERS DATE	AU	MB	\$55.00
* 403	N.D.	CENT	BU ZINC, MASSIYE CUD OVER DATE	BU	MB	\$99.00
* 404	1982	CENT	30% PARTIAL BROCKAGE OBVERSE 8:00	UNC	MB	\$32.00
* 405	1964	CENT	BROADSTRUCK + 50% PARTIAL BROCKAGE VERY ATTRACTIVE	BU	MB	\$55.00
406	1909 S	CENT	LAMINATION ON SHOULDER OBVERSE	VG	MB	\$89.00
407	1909VDB	CENT	DEEP STRUCK THRU 10:00 LIGHT CORROSION	CORC	MB	\$15.00
408	1953 D	CENT	D OVER D FS-501	EF	MB	\$2.50
409	N.D.	CENT	CAPPED DIE STRIKE , EXPUNDED MEMORIAL OBVERSE	UNC	MB	\$32.00
410	N.D.	CENT	CAPPED DIE STRIKE, GGHOST LINCOLN	BU	MB	\$24.00
411	N.D.	CENT	COUNTER BROCKAGE COPPER GHOST LINCOLN GREAT EXAMPLE	UNC	MB	\$125.00
412	1972 D	CENT	UNIFACE REVERSE STRUCK WITH ANOTHER BLANK REVERSE	BU	MB	\$65.00
413	1969 S	CENT	MACHINE DOUBLING	BU	MB	\$3.50
414	1991	CENT	CENTERED BROADSTRIKE	UNC	MB	\$1.50

415	1943	CENT	STRUCK ON THINNER PLANCHET 38.9 GRAINS SHOULD BE 42.5 GRAINS	UNC	MB	\$45.00
416	1981 S	CENT	TYPE 2 MINT MARK	CHPF	MB	\$34.00
417	2009	CENT	"WART" DIE BREAK ON THUMB	BU	MB	\$1.50
418	1959 D	CENT	STRUCK THRU OVER 9 IN DATE	BU	MB	\$1.00
419	N.D.	CENT	NICE 25% STRUCK THRU CLOTH SEE THE WEAVE	UNC	MB	\$55.00
420	1944 D	CENT	D OVER S FS-512	VF	MB	\$37.50
421	1952 D	CENT	WRPM 16 D BASE OF BUST	VF+	MB	\$12.50
422	1952 D	CENT	D OVER S OMM #1 FS-511	EF+	MB	\$20.00
423	1955 D	CENT	DOUBLED DIE OBVERSE I-O-IV-+VIII	EF	MB	\$11.50
424	2009	CENT	WDDR-003, DDR-3-R-VIII	BU	MB	\$5.50
425	1934 D	CENT	RPM #2	EF	MB	\$15.00
426	1938 D	CENT	RPM #2 STAGE C, DD REVERSE I-R-VI	EF	MB	\$5.00
427	1938 S	CENT	RPM #2 FS-502	VF35	MB	\$3.00
428	1939 D	CENT	RPM #1	EF	MB	\$3.75
429	1940 D	CENT	RPM #2	EF	MB	\$3.75
430	1942 D	CENT	RPM #2 FS-501	EF	MB	\$3.50
431	1942 D	CENT	RPM 3	EF	MB	\$3.25
432	1942 D	CENT	RPM #3	UNC	MB	\$8.50
433	1944 D	CENT	RPM #8	EF	MB	\$2.00
434	1944 D	CENT	RPM #10	EF	MB	\$2.25
435	1944 D	CENT	RPM #13	EF+	MB	\$2.25
436	1945 D	CENT	RPM #1	EF	MB	\$2.00
437	1945 D	CENT	RPM#4	EF	MB	\$2.00
438	1945 S	CENT	RPM #6	EF	MB	\$2.25
439	1946 D	CENT	RPM #17	EF	MB	\$2.00
440	1948 D	CENT	RPM #5	EF	MB	\$1.75
441	1949 D	CENT	RPM #10	EF	MB	\$1.75
442	1949 S	CENT	RPM #2	BU	MB	\$11.50
443	1949 S	CENT	RPM #3	AU	MB	\$2.00
444	1950 D	CENT	RPM #1	EF	MB	\$2.25
445	1950 S	CENT	RPM #4	EF	MB	\$2.50
446	1950 S	CENT	RPM #11	EF	MB	\$2.00
447	1951 D	CENT	RPM #1	EF	MB	\$2.25
448	1951 D	CENT	RPM #2	EF	MB	\$2.25
449	1951 D	CENT	RPM #4	EF	MB	\$2.00
450	1951 D	CENT	RPM #8	EF	MB	\$2.25
451	1951 D	CENT	RPM #18	EF	MB	\$2.00
452	1951 D	CENT	RPM #25	EF	MB	\$2.00
453	1951 S	CENT	RPM #4	EF	MB	\$2.00
454	1951 S	CENT	RPM #7	EF	MB	\$2.00
455	1951 S	CENT	RPM #8	EF	MB	\$1.75
456	1952 D	CENT	RPM #3	EF	MB	\$1.75
457	1952 D	CENT	RPM #6	EF	MB	\$1.75
458	1952 D	CENT	RPM #17	EF	MB	\$1.75
459	1952 S	CENT	RPM #5	EF	MB	\$1.75
460	1952 S	CENT	RPM #7	E	MB	\$1.75
461	1952 S	CENT	RPM #8	EF	MB	\$2.00
462	1952 S	CENT	RPM #12	EF	MB	\$2.00
463	1953 D	CENT	RPM#1	EF	MB	\$3.25
464	1953 D	CENT	RPM #2 STAGE A	EF	MB	\$2.25
465	1953 D	CENT	RPM #5	EF	MB	\$1.75
466	1953 D	CENT	RPM # 11	EF	MB	\$1.75
467	1953 D	CENT	RPM #12	EF	MB	\$1.75
468	1953 D	CENT	RPM #23	EF	MB	\$1.75
469	1953 S	CENT	RPM #2 STAGE D/E	EF	MB	\$1.75
470	1953 S	CENT	RPM #3	EF	MB	\$1.75

471	1953 S	CENT	RPM #5	EF	MB	\$1.75
472	1953 S	CENT	RPM #6	EF	MB	\$1.75
473	1953 S	CENT	RPM #13	EF	MB	\$1.75
474	1953 S	CENT	RPM #19	EF	MB	\$1.75
475	1954 D	CENT	RPM #1 EDS D/D/D FS-501	EF	MB	\$10.00
476	1954 S	CENT	RPM #2	EF	MB	\$1.75
477	1954 S	CENT	RPM #4	EF	MB	\$1.75
478	1955 D	CENT	RPM #2	EF	MB	\$2.25
479	1955 D	CENT	RPM #4	EF	MB	\$1.75
480	1955 D	CENT	RPM #11	EF	MB	\$1.75
481	1955 S	CENT	RPM #2	EF	MB	\$1.75
482	1956 D	CENT	RPM #1	EF	MB	\$12.50
483	1956 D	CENT	RPM #3	EF	MB	\$2.25
484	1956 D	CENT	RPM #4	EF	MB	\$1.75
485	1956 D	CENT	RPM #6	EF	MB	\$1.75
486	1956 D	CENT	RPM #8 EDS FS-501	VG	MB	\$9.50
487	1956 D	CENT	RPM #8	VF	MB	\$19.50
488	1956 D	CENT	RPM #15	EF	MB	\$1.75
489	1957 D	CENT	RPM #2	EF	MB	\$1.75
490	1957 D	CENT	RPM #3	EF	MB	\$1.75
491	1957 D	CENT	RPM #5	EF	MB	\$3.25
492	1957 D	CENT	RPM #13	EF	MB	\$1.50
493	1957 D	CENT	RPM #14	EF	MB	\$1.50
494	1957 D	CENT	RPM #15	EF	MB	\$1.50
495	1957 D	CENT	RPM #17 SPOT ON FOREHEAD	EF	MB	\$1.50
496	1958 D	CENT	RPM #1	EF	MB	\$2.25
497	1958 D	CENT	RPM #5	EF	MB	\$2.25
498	1958 D	CENT	RPM #7	EF	MB	\$1.75
499	1958 D	CENT	RPM #15	EF	MB	\$1.50
500	1958 D	CENT	RPM #17	EF	MB	\$2.25
501	1959 D	CENT	RPM #1 STAGE E	EF	MB	\$6.25
502	1959 D	CENT	RPM #6	EF	MB	\$1.50
503	1960 D	CENT	RPM #1	EF	MB	\$7.50
504	N.D.	CENT	COPPER TYPE 2 PLANCHET	EF	MB	\$1.25
505	1952 D	CENT	LARGE UNCENTERED BROADSTRIKE	UNC	MB	\$39.00
506	1952 D	CENT	15% OFF CENTER 7:30	UNC	MB	\$46.00
507	1918 D	CENT	7% OFF CENTER 1:00 DARK SPOTS	FIN	MB	\$22.00
508	1920	CENT	10% OFF CENTER 5:00	AU58	MB	\$85.00
509	1970	CENT	60% OFF CENTER 11:00	UNC	MB	\$22.00
510	1970 D	CENT	70% OFF CENTER 9:00	BU	MB	\$22.00
511	1970 D	CENT	70% OFF CENTER 9:00	AU	MB	\$12.00
512	1971	CENT	10% OFF CENTER 9:00	UNC	MB	\$20.00
513	1971 D	CENT	70% OFF CENTER 10:00	BU	MB	\$20.00
514	1972	CENT	70% OFF CENTER 10:00	UNC	MB	\$20.00
515	1972 D	CENT	70% OFF CENTER 9:00	UNC	MB	\$24.00
516	1973	CENT	65% OFF CENTER 11:00	UNC	MB	\$20.00
517	1973 D	CENT	50% OFF CENTER 10:00	BU	MB	\$22.00
518	1974	CENT	60% OFF CENTER 10:00	UNC	MB	\$20.00
519	1974 D	CENT	10% OFF CENTER 1:00	BU	MB	\$20.00
520	1975	CENT	60% OFF CENTER 10:00	BU	MB	\$20.00
521	1975 D	CENT	85% OFF CENTER 10:00	BU	MB	\$20.00
522	1976	CENT	40% OFF CENTER 12:00	BU	MB	\$30.00
523	1976 D	CENT	80% OFF CENTER 11:00	BU	MB	\$16.00
524	1977	CENT	40% OFF CENTER 8:00	UNC	MB	\$10.00
525	1977 D	CENT	80% OFF CENTER 9:00 STRETCH STRIKE	UNC	MB	\$15.00
526	1978	CENT	60% OFF CENTER 9:00	UNC	MB	\$15.00
527	1978 D	CENT	60% OFF CENTER 9:00	UNC	MB	\$18.00

528	1979	CENT	75% OFF CENTER	9:00 SCRATCHES REVERSE	UNC	MB	\$12.00
529	1979 D	CENT	55% OFF CENTER	9:00 STRETCH STRIKE	UNC	MB	\$18.00
530	1980	CENT	80% OFF CENTER	9:00	UNC	MB	\$12.00
531	1980 D	CENT	80% OFF CENTER	9:00	UNC	MB	\$10.00
532	1981	CENT	40% OFF CENTER	10:00	UNC	MB	\$12.00
533	1981 D	CENT	40% OFF CENTER	9:00	GEM	MB	\$14.00
534	1981 D	CENT	55% OFF CENTER	9:00 RARE DATE	UNC	MB	\$75.00
535	1983	CENT	60% OFF CENTER	10:00 STRETCH UNIFACE REVERSE	UNC	MB	\$12.00
536	1983 D	CENT	60% OFF CENTER	8:00	UNC	MB	\$12.00
537	1984	CENT	90% OFF CENTER	10:00	UNC	MB	\$12.00
538	1984 X	CENT	60% OFF CENTER	8:00	BU	MB	\$10.00
539	1984 D	CENT	50% OFF CENTER	9:00	BU	MB	\$10.00
540	1985	CENT	50% OFF CENTER	9:00	UNC	MB	\$10.00
541	1985 D	CENT	55% OFF CENTER	11:00	UNC	MB	\$15.00
542	1986	CENT	50% OFF CENTER	8:00	UNC	MB	\$10.00
543	1986	CENT	5% OFF CENTER	5:00	BU	MB	\$2.00
544	1986 D	CENT	50% OFF CENTER	8:00	UNC	MB	\$12.00
545	1987	CENT	60% OFF CENTER	10:00 STRETCH STRIKE	UNC	MB	\$10.00
546	1987 D	CENT	50% OFF CENTER	12:00	UNC	MB	\$12.00
547	1988	CENT	50% OFF CENTER	8:00	UNC	MB	\$10.00
548	1988 D	CENT	65% OFF CENTER	10:00	UNC	MB	\$12.00
549	1989	CENT	50% OFF CENTER	8:00	UNC	MB	\$12.00
550	1989 D	CENT	60% OFF CENTER	8:00	UNC	MB	\$15.00
551	1990	CENT	60% OFF CENTER	10:00 NICE CHAIN STRIKE	BU	MB	\$25.00
552	1990 D	CENT	45% OFF CENTER	9:00	UNC	MB	\$18.00
553	1991	CENT	20% OFF CENTER	9:00	UNC	MB	\$15.00
554	1991 D	CENT	65% OFF CENTER	8:00	BU	MB	\$18.00
555	1992	CENT	85% OFF CENTER	9:00	BU	MB	\$18.00
556	1992 D	CENT	60% OFF CENTER	8:00	UNC	MB	\$15.00
557	1993	CENT	80% OFF CENTER	9:00	UNC	MB	\$18.00
558	1994	CENT	60% OFF CENTER	11:00	UNC	MB	\$15.00
559	1994 D	CENT	55% OFF CENTER	8:00	GEM	MB	\$25.00
560	1995	CENT	55% OFF CENTER	8:00	UNC	MB	\$20.00
561	1995 D	CENT	55% OFF CENTER	12:00	BU	MB	\$20.00
562	1996	CENT	50% OFF CENTER	8:00	BU	MB	\$12.00
563	1996 D	CENT	90% OFF CENTER	11:00 FULL DATE & MINT MARK	GEM	MB	\$25.00
564	1997	CENT	60% OFF CENTER	8:00	UNC	MB	\$18.00
565	1997 D	CENT	65% OFF CENTER	12:00	BU	MB	\$20.00
566	1998	CENT	40% OFF CENTER	12:00	BU	MB	\$12.00
567	1998 D	CENT	40% OFF CENTER	8:00	BU	MB	\$12.00
568	1999 D	CENT	15% OFF CENTER	2:00	BU	MB	\$10.00
569	2001 D	CENT	CENTERED BROADSTRIKE		UNC	MB	\$6.00
570	2002 D	CENT	8% OFF CENTER	9:00	UNC	MB	\$10.00
571	2003	CENT	8% OFF CENTER	6:00	BU	MB	\$12.00
572	2003 D	CENT	BROADSTRIKE		BU	MB	\$8.00
573	2004	CENT	BROADSTRIKE		UNC	MB	\$5.00
574	2005	CENT	10% OFF CENTER	10:00	BU	MB	\$12.00
575	2006	CENT	10% OFF CENTER	10:00	BU	MB	\$12.00
576	N.D.	CENT	WHEAT BACK, 60% OFF CENTER	4:00 SCRATCH REVERSE	UNC	MB	\$21.00
577	N.D.	CENT	UNUSUAL OVERLAPPING DOUBLE STRIKE	STRETCH UNIFACE REVERSE	UNC	MB	\$28.00
578	N.D.	CENT	50% OFF CENTER ON A2.6 GRAIN HEAVY	WIERDLY TEXTURED SCRAPPY LOOKING PLANCHET	BU	MB	\$35.00
579	1948	OTHER	ARGENTINA 5c, 15% OFF CENTER	2:00	VF	MB	\$32.00

580	1948	OTHER ARGENTINA 10c, 15% OFF CENTER ++ CRACK THRU PLANCHET 1:30 HALF ACROSS COIN	AU	MB	\$45.00
581	1945	OTHER BRAZIL 20c, DOUBLE STRUCK IN COLLAR	VF	MB	\$32.00
582	1877	OTHER BRAZIL 20c, STRUCK ON 10 CENT PLANCHET	BU	MB	\$39.50
583	ASST	OTHER LOT OF 10 CANADIAN 1C & 5c ERRORS IN 2X2 HOLDERS	ASST	MB	\$9.00
584	1859	OTHER CANADA LARGE CENT ROTATED REVERSE	VF	MB	\$20.00
585	1893	OTHER CANADA LARGE CENT C4 CRACKED DIE	VF	MB	\$8.00
586	1906	OTHER CANADA LARGE CENT STRUCK THRU OBV & REV	FIN	MB	\$6.00
587	1984	CENT CANADA, RAILROAD RIM	AU	MB	\$2.00
588	1906	OTHER CANADA SILVER 5c, LOW 6 NARROW DATE WITH LAMINATION	VG	MB	\$5.00
589	1944	NICK CANADA WITH RIM CUDS	MS63	MB	\$5.00
590	1962	DIME CANADA WITH TILTED PARTIAL COLLAR UNCENTERED BROADSTRIKE	EF	MB	\$32.00
591	1930	QUAR CANADA WITH OCCLUDED GAS BUBBLE	GD	MB	\$12.00
592	1953	DOLL CANADA, WITH LOST LAMINATION , NSF SWL >800 SILVER	EF	MB	\$29.00
593	(1905)	OTHER KIANGSY PROV CHINA 10 CASH, 20% BROCKAGE BY SMALLER COIN + 3 SMALL CUDS	VG	MB	\$45.00
594	N.D.	OTHER CHINA 20 CASH COIN, WITH 1/2 INCH LONG BLOW HOLE + EDSE CRACKS	FIN	MB	\$25.00
595	1917	OTHER HUPOO CHINA, BROASTRIKE	EF	MB	\$24.00
596	2002	OTHER INDIA 1 RUPEE STRUCK ON 25 PAISE PLANCHET	UNC	MB	\$35.00
597	1985	OTHER INDIA 10 PAISE, SCALLOPED OFF CENTER 25%	UNC	MB	\$35.00
598	2000	OTHER INDIA 5 RUPEES, UNCENTERED BROADSTRUCK	BU	MB	\$4.00
599	1919	OTHER ITALY 20c OVERSTRUCK ON 1893 20 CENTAVOS	AU	MB	\$70.00
600	1975	OTHER LOT OF 3 MEXICO COINS TOP ONE IS 10% OFF CENTER 20c	EF	MB	\$12.00
601	(1974)	OTHER MEXICO 5 PESO TYPE 2 PLANCHET INCLUDING REGULAR COIN	UNC	MB	\$32.00
602	1974	OTHER RUSSIA 10< SEVERE DIE CLASHED DIES OBV & REVE	EF	MB	\$4.00
603	1997	OTHER ALUMINUM TOKEN ALGIERS COURTHOUSE 101 YEARS, 1/4 INCH + DEEP CAP BU	BU	MB	\$50.00
604	N.D.	OTHER BUS TOKEN CANTON CITY LINES WITH MISPUNCHED CENTER HOLES	EF	MB	\$5.00

THANK YOU!

PRICES REALIZED SALE 58 — CLOSED 7/31/2013

5	\$4,900.00	119 \$119.00	224 \$65.00	344 \$10.00	424 \$2.75
8	\$135.00	121 \$39.00	225 \$285.00	346 \$8.50	425 \$2.25
9	\$160.00	122 \$35.00	232 \$3.00	347 \$8.50	426 \$3.00
10	\$75.00	123 \$39.00	234 \$175.00	349 \$3.00	428 \$3.50
11	\$235.00	125 \$60.00	235 \$9.07 R	351 \$35.00	429 \$11.00
12	\$55.00	128 \$75.00	238 \$7.50	352 \$7.50	432 \$3.50
13	\$115.00	129 \$95.00	239 \$7.50	353 \$8.80 R	448 \$2.50
14	\$185.00	130 \$210.00	240 \$13.75 R	354 \$8.00	455 \$1.44 R
20	\$746.89 R	131 \$52.80 R	241 \$24.75 R	355 \$10.00	457 \$3.18 R
24	\$39.00	132 \$34.00	243 \$12.00	357 \$16.50 R	458 \$2.00
27	\$295.00	133 \$36.00	244 \$29.65	358 \$9.90 R	465 \$166.21 R
28	\$27.00	134 \$32.00	247 \$7.00 T	359 \$24.75 R	466 \$275.00
32	\$2,000.00	135 \$135.00	248 \$35.00	360 \$7.15 R	467 \$12.00
34	\$29.00	136 \$115.00	250 \$8.00	367 \$3.50	470 \$45.00
37	\$25.00	137 \$10.00	251 \$10.00	368 \$3.50	471 \$24.00
43	\$1,600.00	138 \$5.38 R	255 \$30.00	369 \$3.50	478 \$95.00
46	\$225.00	139 \$9.00 T	259 \$45.00	370 \$3.50	480 \$15.00
47	\$45.00	140 \$48.00	260 \$90.75 R	371 \$3.96 R	481 \$4.40 R
49	\$76.00	141 \$48.00	262 \$15.00	372 \$4.00	482 \$144.10 R
51	\$55.00	143 \$10.00	264 \$5.50 R	374 \$4.00	484 \$63.00
62	\$55.51 R	147 \$14.00	265 \$6.60 R	375 \$4.00	485 \$55.00
69	\$43.72 R	150 \$77.00 R	267 \$19.00	376 \$8.00	487 \$50.00
70	\$95.00	151 \$15.00	274 \$6.00	377 \$3.50	489 \$5.50 R
72	\$49.00	153 \$38.00	275 \$4.60	378 \$3.50	491 \$12.00
80	\$390.00	155 \$25.00	277 \$2.32 R	379 \$3.50	493 \$5.00
82	\$85.00	157 \$25.00	278 \$16.00	380 \$7.15 R	498 \$50.71 R
83	\$18.00	162 \$89.00	284 \$3.68 R	381 \$3.50	499 \$19.00
84	\$390.00	163 \$55.00	286 \$125.00	388 \$3.53 R	501 \$315.00
91	\$40.00	165 \$6.25	287 \$23.00	389 \$3.50	504 \$215.00
92	\$40.00	166 \$5.78 R	296 \$9.90 R	396 \$2.75	506 \$650.00
93	\$333.02 R	167 \$11.00 R	297 \$18.50	397 \$2.75	508 \$720.00
95	\$135.00	168 \$2.20 R	299 \$31.00	401 \$2.75	509 \$650.00
96	\$75.00	169 \$1.00	301 \$33.00	402 \$5.00	510 \$22.00 R
97	\$85.00	170 \$5.00	302 \$26.67 R	403 \$3.00	511 \$100.00
98	\$99.00	171 \$20.00	304 \$11.00 R	404 \$4.50	515 \$18.00
99	\$365.00	173 \$79.00	306 \$55.00 R	405 \$5.00	516 \$82.00
101	\$154.00 R	176 \$3.30 R	307 \$45.00	406 \$2.75	517 \$115.00
102	\$35.00	177 \$8.80 R	309 \$115.00	407 \$5.00	518 \$140.00
103	\$30.00	178 \$3.30 R	310 \$33.00 R	408 \$2.50	519 \$212.50
104	\$110.00	179 \$210.00	311 \$2.47 R	409 \$3.50	521 \$50.00
106	\$22.00	184 \$22.00	312 \$2.19	410 \$2.50	522 \$220.00 R
107	\$85.00	190 \$21.45 R	318 \$3.75	411 \$2.75	525 \$2.20 R
108	\$150.00	191 \$18.00	319 \$5.50 R	412 \$2.00	526 \$3.00
109	\$105.00	200 \$44.00 R	320 \$60.00	413 \$2.75	527 \$59.00
110	\$140.00	204 \$25.00	324 \$3.65 R	414 \$2.75	528 \$34.00
111	\$50.60 R	205 \$281.60 R	325 \$4.06 R	415 \$3.00	529 \$276.00
112	\$495.00	206 \$9.03 R	330 \$2.20 R	416 \$2.75	530 \$989.00
113	\$94.60 R	207 \$10.00	331 \$69.00	417 \$2.75	531 \$499.00 T
115	\$75.00	208 \$26.00	333 \$141.90 R	419 \$2.75	532 \$415.00
116	\$125.00	213 \$45.00	336 \$25.00	420 \$1.75	533 \$71.50
117	\$42.00	214 \$179.00	337 \$20.00	421 \$2.75	
		222 \$77.90	340 \$14.00	422 \$1.70	
		223 \$55.00	343 \$9.90 R	423 \$2.50	

THATS IT FOR THIS SALE. THANKS TO ALL THAT JOINED IN ON THIS ONE.
R = PRICE REDUCED FROM BID, T = THE BIDS RECEIVED FIRST POST MARK WINS.
UNSOLD LOTS MAY BE PURCHASED FOR MINIMUM BID OR EST PRICE WITHIN NEXT 2 WEEKS.
THANKS AGAIN TO ALL OF YOU. - LEN ROOSMALEN

