

JIM'S C&S

Hilldale Shopping Center
702 N. Midvale Blvd. B-2
Madison, WI 53705
(608) 233-2118

www.jimscoins.com



13 DBL STRK ON DIME PLAN + INDENT!

NO.48



22 1976 STRUCK ON PERU 1/2 SOL
DUAL COUNTRY DBL DENOM!

FIRST CLASS

MAIL BID SALE #J-48

CLOSES NOVEMBER 30, 2011

- 1) SEND ALL BIDS TO: JIM'S COINS, 702 N. MIDVALE BLVD. B-2, MADISON, WI 53705, OR FAX #608-233-0175, OR PHONE 608-233-2118, OR EMAIL: jimcoins @sbcglobal.net
- 2) THE HIGHEST BIDDER ACKNOWLEDGED BY THE AUCTIONEER SHALL BE THE BUYER. THE AUCTIONEER RESERVES THE RIGHT TO REJECT ANY BID OR WITHDRAW ANY LOT FROM THE SALE. BIDDERS ARE RESPONSIBLE FOR THEIR OWN ERRORS, SO DOUBLE CHECK YOUR BIDS. THE FIRST POSTMARK WINS IN CASE OF A TIE BID.
- 3) ALL SALES ARE FOR CASH AND ARE PAYABLE IMMEDIATELY UPON RECEIPT OF THE INVOICE.
- 4) AUCTIONS ARE OPEN TO ALL AND NO DEPOSIT IS REQUIRED OR DESIRED.
- 5) NO UNLIMITED BIDS ARE ACCEPTED. WINNING BIDDERS WILL BE AWARDED LOT AT A 10% ADVANCE OVER THE SECOND HIGHEST BID. IF NO OTHER BIDS ARE RECEIVED FOR A LOT, THE BIDDER WILL BE AWARDED THE LOT AT THE MINIMUM BID, OR ESTIMATE IF NO MINIMUM IS GIVEN.
- 6) ALL ITEMS ARE GUARANTEED GENUINE. BIDDERS MAY RETURN ANY ITEM NOT AS DESCRIBED.
- 7) A \$1 HANDLING CHARGE WILL BE ADDED TO ALL WINNING INVOICES. BID EARLY AND BID OFTEN. THANKS! - LEN & JIM * = PHOTO

* 1	1921 S	DOLL	MORGAN STRUCK 5% OFF CENTER 6:30 ITEM GET IT NOW! PCGS	SCARCE AU55	MB	\$1,250.00
2	1887	DOLL	VAM 12A, "ALLIGATOR EYE" ANACS	MS64	MB	\$99.00
3	1923 S	DOLL	GOOD SIZE LAMINATION OUT 4:00 TO 6:00 REVERSE PCGS	XF45	MB	\$45.00
* 4	1979 P	DOLL	SBA STRUCK ON CLAD QUARTER PLANCHET PCGS	MS63	MB	\$675.00
5	(2009)	DOLL	NATIVE AMERICAN, PARTIAL COLLAR STRIKE + MISSING EDGE LETTERING PCGS	MS65	MB	\$220.00
* 6	1954 D	HALF	FRANKLIN REVERSE INDENT STRUCK THRU SMALLER PLANCHET RARE! PCGS	AU50	MB	\$950.00
* 7	N.D.-D	HALF	KENNEDY STRUCK ON 5c PLANCHET NICE FULL KENNEDYS HEAD ANACS	MS62	MB	\$1,650.00
8	1972 D	HALF	STRUCK ON CLAD QUARTER PLANCHET NEAT ONE PCGS	MS62	MB	\$860.00
* 9	N.D.	HALF	STRUCK ON VERY THIN 30 GRAIN Ag SHELL "BEARDED KENNEDY" PCGS	MS61	MB	\$450.00
10	1965	HALF	DOUBLED DIE OBERSE ANACS	MS63	MB	\$36.00
11	1971 D	HALF	DOUBLED DIE OBERSE ANACS	MS64	MB	\$35.00
12	N.D.	QUAR	WASHINGTON STRUCK ON A .72 GRAMS CLAD FRAGMENT, NOSE & FOREHEAD OBERSE DIE STRUCK REVERSE NGC	MS65	MB	\$550.00
* 13	N.D.	QUAR	STRUCK ON DIME PLANCHET, DOUBLE STRUCK, 35% INDENTED OBERSE, SUPER EYE APPEAL PCGS	MS64	MB	\$2,900.00
14	1964	QUAR	STRUCK ON NICKEL PLANCHET NICE CENTERING HIGH GRADE PCGS	MS66	MB	\$425.00
15	1967	QUAR	STRUCK ON NICKEL PLANCHET ANACS	AU58	MB	\$230.00
16	1963	QUAR	TYPE B REVERSE FS-901 PCGS	MS64	MB	\$75.00
* 17	1999 P	QUAR	GEORGIA, 30% OFF CENTER ON 45% STRAIGHT CLIPPED PLANCHET PCGS	MS64	MB	\$720.00
18	1999 D	QUAR	DELAWARE, STRUCK ON NICKEL PLANCHET PCGS	MS64	MB	\$495.00
* 19	1999 D	QUAR	NEW JERSEY, 26% TRIPLE CLIPPED, LARGEST 20% + PARTIAL COLLAR LOOKS 5% OFF CENTER	MS61	MB	\$165.00

PCGS							
	20	2000 P	QUAR	MARYLAND, REVERSE CLAD LAYER OFF BEFORE STRUCK ICG	MS60	MB	\$155.00
*	21	1875 CC	DIME	10% OFF CENTER 7:00 NEAT OLDIE + RARE CC TOO!! ANACS	FN12	MB	\$950.00
	22	1976	DIME	BICENTENNIAL, STRUCK ON A PERU 1/2 SOL STRUCK COIN, EXAMPLE OF PERU COIN INCLUDED. ONLY BRASS DIME KNOWN. FANTASTIC DETAILS SHOWING. NGC	MS66	MB	\$3900.00
*	23	1968 D	DIME	STRUCK ON 45 GRAIN PLANCHET, HALF \$ STOCK PCGS	MS65	MB	\$150.00
	24	1920	NICK	OBVERS & REVERSE DIE BREAKS (CUDS) BNC-20- 7 & BNC-20-8R NGC	VG8	MB	\$135.00
	25	2006 P	NICK	STRUCK ON ELLIPTICAL CLIPPED PLANCHET 4 GRAMS, 5 FULL STEPS NGC	AU58	MB	\$210.00
	26	1976	NICK	STRUCK ON A PHILIPPINES ALUMINUM 1 SENTIMO PLANCHET 1.2 GRAM PLANCHET ORIGINALLY SQUARE SHAPED NGC	MS63	MB	\$1,050.00
*	27	1983 D	NICK	STRUCK ON A DAMAGED 10c PLANCHET 2.3 GRAMS, VERY UNUSUAL LOTS OF COPPER SHOWING COIN IS .2 GRAM OVERWEIGHT NGC	MS65	MB	\$595.00
	28	1976	NICK	BICENTENNIAL STRUCK ON DIME PLANCHET 2.31 GRAMS NGC	MS64	MB	\$399.00
	29	1974	NICK	STRUCK ON DIME BLANK 2.33 GRAMS LUSTEROUS NGC	AU58	MB	\$340.00
	31	1964	NICK	STRUCK ON CENT PLANCHET 3.08 GRAMS NGC BRN	AU58	MB	\$235.00
	32	1970 S	NICK	STRUCK ON CENT PLANCHET PCGS	MS63	MB	\$650.00
	33	1976 D	NICK	STRUCK ON CENT PLANCHET BICENTENNIAL PCGS BRN	MS63	MB	\$350.00
	34	1980 P	NICK	STRUCK ON CENT PLANCHET PCGS	AU58	MB	\$199.00
*	36	N.D.	NICK	JEFFERSON STRUCK OFF CENTER ON 5c SCRAP SUPER NEAT MACHETTE SHAPE NGC	MS66	MB	\$525.00
*	37	N.D.	NICK	JEFFERSON ON BOWTIE SCRAP AND STRAIGHT CLIP 1.3 GRAMS NGC	MS66	MB	\$1,250.00
*	38	1945 P	NICK	55% INDENTED OBTVERSE RARE ON WAR NICK PCGS	MS64	MB	\$850.00
*	39	1999 P	NICK	BROAD STRUCK WITH 40% INDENT 9:30 QUARTER SIZE SUPER EXAMPLE NGC 6 FULL STEPS	MS66	MB	\$150.00
*	40	1954 D	NICK	STRUCK 70% OFF CENTER 9:00 DIE STRUCK REVERSE PCGS	MS66	MB	\$450.00
*	41	1969S	NICK	STRUCK 20% OFF CENTER 11:00 FULL STEPS NOT ON SLAB NGC	MS66	MB	\$450.00
*	43	1873	CENT	STRUCK 35% OFF CENTER VERY TOUGH DATE PCGS	GD06	MB	\$995.00
*	44	1985	CENT	STRUCK ON STRUCK DIME 2 FULL DATES, NEAT POSITION OF LINCOLN & ROOSEVELT'S HEADS FACING EACH OTHER NICE DETAILS OF BOTH COINS NGC	MS66	MB	\$950.00
*	45	N.D.	CENT	STRUCK 50% OFF CENTER ON ELLIPTICAL CLIPPED PLANCHET SUPER CUTE PCGS	MS64	MB	\$600.00
*	46	N.D.	CENT	MEMORIAL OBV COUNTER BROCKAGE HUGE EXPANDED LINCOLN'S HEAD NGC BRN	MS64	MB	\$225.00
*	47	1978 D	CENT	SUPER NEAT DOUBLE STRUCK, BOTH 70% OFF ROTATED BETWEEN STRIKES 2 DATES CLOSE TOGETHER WITH INDENT EDGE OF D/S PCGS RED	MS62	MB	\$95.00
	48	1920	CENT	STRUCK 20% OFF CENTER 12:00 SEGS R/B	MS63	MB	\$160.00
	49	2006	CENT	STRUCK 5% OFF CENTER 10:30 NGC RED	MS66	MB	\$45.00
	50	1771	OTHER	NETHERLANDS HOLLAND OBTVERSE DOUBLE STRUCK PCGS GENUINE	(EF)	MB	\$110.00
*	51	(1970)	NOTE	C.O.P.E. EXPERIMENTAL TEST NOTE ONLY SERIAL NUMBERS OBV, BLANK REVERSE PCGS	CU64	MB	\$395.00

PPQ

* 52	1977	\$100	FEDERAL RESERVE NOTE, FULL MEDIUM DARK OBVERSE OFFSET PN REVERSE PMG EPQ	VF35	MB	\$285.00
* 53	1977	\$20	F.R.N, CUTTING ERROR 1/8 INCH OF NEXT NOTE ACROSS BOTTOM AND IT'S A STAR NOTE PMG	VF25	MB	\$215.00
* 54	1950 A	\$20	F.R.N, INVERTED SEALS & SERIAL NUMBERS NEAT	VF	MB	\$295.00
* 55	1950 B	\$20	F.R.N, WHITE GUTTER ACROSS LOWER RIGHT CORNER A STAR REPLACEMENT NOTE PCGS PPQ	VF35	MB	\$120.00
* 56	1928	\$10	GOLD CERTIFICATE MINOR MISALIGNED GOLD OVER PRINT PCGS	VF20	MB	\$395.00
* 57	1985	\$10	FED RESERVE NOTE, INVERTED OVERPRINT & SHIFTED OVER PRINT PMG EPQ	VF30	MB	\$285.00
* 58	2007 B	\$10	F.R.N, LARGE ENLONGATED ROUND DARK GREEN INK SMEAR CENTER REVERSE PCGS PPQ	AU58	MB	\$295.00
* 59	1995	\$10	F.R.N, FLL DARK OFFSET OBVERSE ON REVERSE + OVER INKED FRONT	VF	MB	\$165.00
* 60	N.D.	\$5	F.R.N, MISSING FRONT PRINTING ONLY SEALS & SERIAL NUMBERS NEAT ERROR PMG EPQ	CU65	MB	\$1,100.00
* 61	1995	\$5	F.R.N, NICE FULL REVERSE OFFSET ON OBVERSE TOUGH ON \$5 NOTES	AU58	MB	\$195.00
* 62	1950 B	\$5	F.R.N, SEALS & NUMBERS SHIFTED WAY RIGHT, WITH VERTICAL INSPECTOS CRAYON MARK DOWN CENTER OBVERSE	FIN	MB	\$90.00
* 63	1988	\$5	F.R.N, NICE WIDE WHITE GUTTER TOP TO BOTTOM OBVERSE LEFT END	VF	MB	\$49.00
* 64	1977 A	\$1	F.R.N, LARGE CORNER FOLD LOW RIGHT CORNER AFTER FRONT & BACK PRINT BEFORE OVERPRINT PART ON FOLDED CORNER PMG	VF35	MB	\$265.00
* 65	1981	\$1	F.R.N, MISALIGNED BLACK OVERPRINT JUST VERY TIP DISTRIC NUMBERS ON LOW EDGE PCGS	CU66	MB	\$165.00
* 66	2001	\$1	F.R.N, FOLDOVER LOWER LEFT CORNER BEFORE OBVERSE PRINT LEAVING WHITE OBV	VF	MB	\$69.00
* 67	1977	\$1	F.R.N, SUPER NEAT TEAR TOP LEFT TIP HAS REV PRINT WOWSER	CU	MB	\$350.00
* 68	1977	\$1	F.R.N, 2 CONSECUTIVE NUMBERS WITH NICE BLACK SMEAR OBVERSE NEAT PAIR	UNC	MB	\$150.00
* 69	1969 C	\$1	F.R.N, HALF INCH WIDE BLACK INK SMEAR TOP TO BOTTOM	CU	MB	\$85.00
70	1995	\$1	F.R.N, FULL LIGHT OFFSET OBVERSE ON REVERSE	FIN	MB	\$65.00
71	1977	\$1	F.R.N, FULL VERY LIGHT OFFSET REVERSE ON OBVERSE	UNC	MB	\$65.00
* 73	N.D.	OTHER	20 PIECE LOT CHOPPED WEBBING, 5 NICKEL, 5 QUARTER, 5 DIME, 5 GOLDEN DOLLAR NICE ASST	UNC	MB	\$140.00
74	N.D.	DOLL	GOLDEN DOLLAR BOWTIE SCRAP FROM CHOPPED WEBBING	UNC	MB	\$12.00
* 75	N.D.	HALF	BOWTIE PLANCHET SCRAP, HALF DOLLAR MUCH TOUGHER TO FIND	UNC	MB	\$23.00
76	N.D.	HALF	5 PIECE LOT OF HALF DOLLAR CHOPPED SCRAP WEBBING	UNC	MB	\$100.00
77	N.D.	QUAR	BOW TIE SCRAP FROM PLANCHET WEB STRIP	UNC	MB	\$8.51
78	N.D.	DIME	BOW TIE SCRAP FROM PLANCHET WEB STRIP	UNC	MB	\$5.00
79	N.D.	NICK	BOW TIE SCRAP FROM PLANCHET WEB STRIP	UNC	MB	\$6.00
80	N.D.	CENT	3 3/4 x 3 INCH PIECE 1943 STEEL PUNCHED STRIP ORIGINAL CONDITION	AU	MB	\$33.00
81	N.D.	CENT	3 3/4 x 4 INCH PIECE 1943 STEEL PUNCHED STRIP REPROCESSED	AU	MB	\$33.00
* 82	1921 S	DOLL	UNCENTERED BROADSTRIKE WITH TOUCH OF PARTIAL COLLAR	EF	MB	\$295.00
* 83	1921	DOLL	MORGAN, WIDE REEDING VARIETY	UNC	MB	\$39.00

84	1888 O	DOLL	DOUBLED DIE OBVERSE "HOT LIPS" VAM-4, LIGHTLY CLEANED	GD	MB	\$37.00	
85	1884 O	DOLL	OBVERSE WIDE STRUCK THRU CHEEK TO RIM	BU	MB	\$49.00	
*	86	1896	DOLL	LONG STRUCK THRU 8:00 RIM TO CENTER OF CHEEK	AU	MB	\$42.00
87	1890 O	DOLL	MISALIGNED DIE OBVERSE	EF	MB	\$45.00	
88	1921	DOLL	MORGAN WITH 2% CURVED CLIP 5:00	UNC	MB	\$39.00	
*	89	1882 O	DOLL	STRONG O OVER S REPUNCHED MINT MARK CLEANED	AU	MB	\$49.00
*	90	1924	DOLL	10 x 2mm ROLLED IN SLAG ON EAGLES WING	EF	MB	\$32.00
91	1922	DOLL	NICE RIM CLIP AT 9:00	AU	MB	\$35.00	
*	92	(1978)	DOLL	IKE DOLLAR 18% OFF CENTER 7:00 JUST VERY TOPS OF DATE SHOW	MS64	MB	\$285.00
*	93	1974	DOLL	3% CURVED CLIP 4:00	UNC	MB	\$23.00
94	1979	DOLL	SBA, NEAR DATE VARIETY	MS63	MB	\$16.00	
95	N.D.	DOLL	TYPE 2 SAC/PRES DOLLAR PLANCHET	BU	MB	\$37.00	
96	N.D.	DOLL	10 COIN LOT PRESIDENTAL GOLDEN DOLLAR PLANCHET 10 COIN LOT	BU	MB	\$340.00	
97	2007	DOLL	JOHN ADAMS, DOUBLE INVERTED EDGE LETTERING	UNC	MB	\$29.00	
98	1941 D	HALF	REPUNCHED MINT MARK #2	AU	MB	\$22.00	
99	1946	HALF	NO AW DESIGNORS INITIALS	FIN	MB	\$50.00	
100	1968 D	HALF	CLAMSHELL OBVERSE OBVERSE 1:00 TO 8:00	UNC	MB	\$32.00	
*	101	1968	HALF	10% OFF CENTER 6:00 TOP HALFS OF DATE SHOW	AU	MB	\$95.00
*	102	1984	HALF	15% OFF CENTER 12:00 LIGHT SCRATCH OBVERSE	BU	MB	\$55.00
*	103	N.D.	HALF	KENNEDY CLAD 25% OFF CENTER 7:00 LIGHT COUNTER SKID NECK	BU	MB	\$115.00
*	104	1995 P	HALF	LARGE ROUND STRUCK THRU FRONT OF MOUTH & CHIN	UNC	MB	\$6.00
*	105	1971 D	HALF	5% CURVED CLIP 6:00 + 7% CURVED CLIP 12:30	BU	MB	\$45.00
106	1928 S	QUAR	UPSIDE DOWN MINT MARK	FIN	MB	\$15.00	
107	1956	QUAR	TYPE 2 PROOF REVERSE, FS-25-1956-901	VF	MB	\$9.50	
108	1957	QUAR	TYPE 2 PROOF REVERSE FS25-1957-901	VF	MB	\$8.50	
109	1958	QUAR	TYPE 2 PROOF REVERSE	EF	MB	\$9.50	
110	1959	QUAR	TYPE 2 PROOF REVERSE FS25-1959-901	MS65	MB	\$17.50	
111	1960	QUAR	TYPE 2 PROOF REVERSE FS-25-1960-901	BU	MB	\$18.50	
112	1961	QUAR	TYPE 2 PROOF REVERSE FS-25-1961-901	BU	MB	\$19.00	
113	1962	QUAR	TYPE 2 PROOF REVERSE FS-25-1962-901	EF	MB	\$12.50	
114	1963	QUAR	TYPE 2 PROOF REVERSE FS-25-1963-901	AU	MB	\$11.00	
115	1964	QUAR	TYPE 2 PROOF REVERSE FS-25-1964-901	UNC	MB	\$17.50	
116	ASST	OTHER	1983P QUARTER STRUCK THRU OBVERSE + 1984P NICKEL STRUCK THRU REVERSE	AU	MB	\$2.00	
117	1987 D	QUAR	D OVER D WEST, STRONG MACHINE DOUBLING	UNC	MB	\$1.00	
118	1951 D	QUAR	NICE DOUBLED DIE OBVERSE PUP; IGWT FS 101	BU	MB	\$45.00	
119	1941	QUAR	STRONG DOUBLED DIE REVERSE	FIN	MB	\$22.00	
120	1940 D	QUAR	DOUBLED DIE REVERSE FS-101	VF	MB	\$35.00	
121	1978	QUAR	UNCENTERED BROADSTRIKE	AU	MB	\$9.00	
122	1979	QUAR	UNCENTERED BROADSTRIKE	BU	MB	\$16.00	
123	1989 P	QUAR	UNCENTERED BROADSTRIKE	AU	MB	\$8.00	
124	1970 D	QUAR	STRUCK ON DIME THICKNESS STOCK	AU	MB	\$29.00	
*	125	1976	QUAR	25% OFF CENTER 11:00	UNC	MB	\$125.00
*	126	N.D.	QUAR	60% OFF CENTER 4:30 CLAD	UNC	MB	\$39.00
127	1998 P	QUAR	5% OFF CENTER WITH WEIRED COMPLETE EDGE	BU	MB	\$18.00	
128	1996 P	QUAR	5% OFF CENTER 10:00	BU	MB	\$12.00	
*	129	1974	QUAR	20% PARTIAL BROCKAGE 11:00, LIGHT OBV SCRATCH	UNC	MB	\$39.00
*	130	1984 P	QUAR	DOUBLE STRUCK, 2ND 75% OFF CENTER 10:00,	UNC	MB	\$55.00

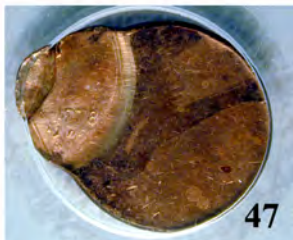
HEAVY SCRAPE RIM 3:00

131	1965	QUAR	5% CURVED CLIP 10:30	AU58	MB	\$3.00
132	1966	QUAR	10% CURVED CLIP 10:30 ++ RIM CLIP 1:30	VF	MB	\$4.00
*	133	1966	QUAR 15% STRAIGHT CLIP 10:30	BU	MB	\$4.00
134	1966	QUAR	5% CURVED CLIP 6:00	BU	MB	\$3.00
*	135	1966	QUAR 4% CURVED CLIP 2:00 + RIM CLIPS AT 4:00 & 11:00	UNC	MB	\$5.00
*	136	1966	QUAR 10% CURVED CLIP 11:00	BU	MB	\$4.50
137	1966	QUAR	10% CURVED CLIP 7:30	BU	MB	\$4.00
138	1966	QUAR	3% CURVED CLIP 11:00 + RIM CLIP 5:30	BU	MB	\$2.50
139	1966	QUAR	6% CURVED CLIP 2:00 + RIM CLIP 8:00	BU	MB	\$3.50
140	1966	QUAR	13% CURVED CLIP 9:30	UNC	MB	\$4.00
141	1967	QUAR	10% CURVED CLIP 4::00	BU	MB	\$4.50
142	1977	QUAR	10% CURVED CLIP 5:00 + RIMCLIP 3:00	UNC	MB	\$5.00
143	1982 D	QUAR	3% CURVED CLIP 12:00 + 3% CURVED CLIP 5:00 5:00	UNC	MB	\$5.00
144	1993 P	QUAR	3% STRAIGHT CLIP 10:30	BU	MB	\$3.50
145	1988 P	QUAR	10% CURVED CLIP 5:30	BU	MB	\$4.00
146	1990 P	QUAR	5% CURVED CLIP 9:30	BU	MB	\$3.50
147	1995 D	QUAR	5% CURVED CLIP 5:00	BU	MB	\$3.00
148	(1997P)	QUAR	10% CURVED CLIP 6:30	BU	MB	\$4.00
149	2001 D	QUAR	NY, BROADSTRUCK WITH TILTED PARTIAL COLLAR	BU	MB	\$15.00
150	ASST	QUAR	10 COIN LOT STATE QUARTERS WITH DIE CHIPS, DIE CHIPS, AND EXTRA METAL?	UNC	MB	\$7.50
151	1999 P	QUAR	10 COIN LOT STATE QUARTERS MINOR ERRORS DDIE CHIPS, DIE BREAKS	AU	MB	\$7.50
152	2005	QUAR	10 COIN LOT STATE QUARTERS WITH MINOR ERRORS PARTIAL FILLS	UNC	MB	\$11.50
153	2004P,D	QUAR	10 COIN LOT MINOR ERRORS MOSTLY BU	UNC	MB	\$11.50
154	2000 P	QUAR	6 COIN LOT STATEHOOD QUARTERS WITH MINOR ERRORS LIKE DIE CHIPS & DIE BREAKS	AU	MB	\$4.50
155	1912 D	DIME	OBVERSE MISALIGNED 5%	GD	MB	\$15.00
156	1892	DIME	DIE CHIP JOINS 2 IN DATE TO BUST	GD	MB	\$4.50
157	1901 O	DIME	DOUBLED MINT MARK??	AG	MB	\$3.00
158	1893 S	DIME	RPM #2 S OVER S WEST BETTER DATE	GD	MB	\$15.00
*	159	1944	DIME 10% OFF CENTER 3:00	EF	MB	\$42.00
160	1940 S	DIME	RPM #1 S/S/S/S	VG	MB	\$4.50
161	1943	DIME	4% CURVED CLIP 2:00	FIN	MB	\$4.50
162	1935	DIME	3% STRAIGHT CLIP 2:00	VF	MB	\$6.00
163	1945	DIME	FILLED DIE OVER 194	AU	MB	\$3.50
164	1942	DIME	MACHINE DOUBLING, 1942/1942	EF	MB	\$10.00
165	1938 D	DIME	RPM #1	VG	MB	\$5.50
166	1940 D	DIME	RPM #2	BU	MB	\$29.00
167	1941 S	DIME	RPM #1	FIN	MB	\$7.00
168	1941 S	DIME	LARGE "S", TRUMPET TAIL S FS-10-1941S-511	FIN	MB	\$15.00
169	1943 S	DIME	RPM #1 FS-10-1943S-501	VF	MB	\$7.50
170	1948 S	DIME	RPM #3	VF	MB	\$4.50
171	1951 S	DIME	RPM #2	FIN	MB	\$4.50
172	1952 S	DIME	RPM #1	FIN	MB	\$5.00
173	1953 S	DIME	RPM #1	VF	MB	\$5.50
174	1958 D	DIME	RPM #1	BU	MB	\$10.00
175	1960 D	DIME	RPM #1	VF	MB	\$5.00
176	1964 D	DIME	RPM #2	EF	MB	\$6.00
177	1964 D	DIME	RPM #2	BU	MB	\$10.00
178	N.D.	OTHER	DIME SIZE STEEL? BLANK PLANCHET	UNC	MB	\$2.00
*	179	1XXX	DIME 37% INDENT 3:00	BU	MB	\$42.00
180	1946 S	DIME	DOUBLED DIE REVERSE FS-502 LDS	BU	MB	\$39.00
*	181	2004 P	DIME REVERSE CLAD LAYER OFF BEFORE STRUCK	GEM	MB	\$65.00

* 182	1964 D	DIME	DOUBLE STRUCK, 2ND 70% OFF CENTER 7:00 DIE STRUCK REVERSE	UNC	MB	\$215.00
* 183	1988 P	DIME	MULTI STRUCK SLIGHTLY UNCENTERED BROADSTRIKE CUPPED OBV, LARGER THAN CENT	BU	MB	\$32.00
* 184	1999 P	DIME	CENTERED BROADSTRIKE MULTI STRUCK LARGER THAN A CENT	BU	MB	\$32.00
* 186	1964 D	DIME	15% CURVED CLIP 6:00	AU	MB	\$4.00
187	1966	DIME	10% CURVED CLIP 10:00	EF	MB	\$1.50
188	1965	DIME	7% CURVED CLIP 3:30	BU	MB	\$2.00
189	1967	DIME	10% CURVED CLIP 6:30 + RIM CLIP 3:00	UNC	MB	\$3.50
190	1964 D	DIME	DIE GOUGH ABOVE HEAD	UNC	MB	\$2.50
185	1964 D	DIME	5% CURVED CLIP 2:00	EF	MB	\$3.50
* 191	1980 P	DIME	50% OFF CENTER 12:00	UNC	MB	\$23.00
* 192	N.D.	DIME	SILVER, 50% OFF CENTER 3:00	GEM	MB	\$95.00
193	N.D.	NICK	TYPE 1 BLANK PLANCHET	UNC	MB	\$122.00
194	N.D.	NICK	TYPE 2 PLANCHET	EF	MB	\$7.00
195	1936	NICK	REVERSE STRUCK THRU ON CENTS	BU	MB	\$15.00
* 196	1920 D	NICK	LAMINATION ON EAR TO NECK FLAP "ELEPHANT EAR"	VG	MB	\$8.50
197	1913 D	NICK	ROTATED REV 25 DEGREES COUNTER CLOCKWISE	AG	MB	\$5.00
198	1937	NICK	5% CURVED CLIP 5:00	GD	MB	\$4.00
199	1935	NICK	DOUBLED DIE REV DDR-1-R-V FS-95-1935-801	FN+	MB	\$95.00
200	1935 S	NICK	RPM #1	FIN	MB	\$5.00
201	1937 D	NICK	RPM #1a	VG+	MB	\$4.50
202	1938 D	NICK	RPM #2	FIN	MB	\$5.00
203	1938 D	NICK	RPM #2 FS-502	EF	MB	\$10.00
204	1940 S	NICK	RPM #1	EF	MB	\$8.50
205	1940 S	NICK	RPM #1 SOUTH	FIN	MB	\$1.50
206	1952 D	NICK	RPM #1	VF	MB	\$5.00
207	1952 S	NICK	RPM #2	VF	MB	\$4.50
208	1958 D	NICK	RPM #1	FIN	MB	\$5.00
209	1943	NICK	SPLIT AFTER STRUCK ONLY OBVERSE HALF	FIN	MB	\$15.00
210	1943 P	NICK	DIE XCRACK LOOKS LIKE 43 OVER 2 BUT IS NOT	EF	MB	\$5.00
* 211	1999	NICK	CENTERED BROADSTRIKE ALMOST QUARTER SIZE	BU	MB	\$10.00
212	1985 P	NICK	VERY NICE MISALIGNED DIE OBVERSE APROX 5%	AU	MB	\$4.00
213	1941 D	NICK	LAMINATION FLAP AT 10:00 REVERSE	VF	MB	\$0.50
214	1942	NICK	LAMINATION ACROSS MOST OF REVERSE	VF	MB	\$0.50
215	1945 D	NICK	LAMINATION ACROSS BUILDING STEPS	BU	MB	\$7.00
216	1951	NICK	LAMINATION STREAKS REVERSE 1:30 TO 6:30	CIRC	MB	\$0.50
217	1960	NICK	LARGE LAMINATION ON EDGE 2:30 TO 5:00 REVERSE	VF	MB	\$1.50
* 218	1943 P	NICK	15% OFF CENTER 12:00 SLIGHT REVERSE SCRATCH	UNC	MB	\$115.00
* 219	1984 P	NICK	60% OFF CENTER 10:30	UNC	MB	\$16.00
220	x 0)OOD	NICK	60% OFF CENTER 11:00	UNC	MB	\$14.00
* 221	N.D.	NICK	30% OFF CENTER 2:30	UNC	MB	\$11.00
* 222	(1964D)	NICK	LATE STAGE CAPPED DIE STRIKE	UNC	MB	\$35.00
* 223	N.D.	NICK	FLIPOVER DOUBLE STRIKE, 2ND 70% OFF CENTER UNIFACE REVERSE 4:00	UNC	MB	\$65.00
* 224	N.D.	NICK	SADDLE STRIKE 75% OFF CENTER DSBS, 85% OFF CENTER UNIFACE REV	BU	MB	\$65.00
225	1940	NICK	3% CURVED CLIP 1:00	EF	MB	\$1.00
226	1941	NICK	3% CURVED CLIP 6:00	FIN	MB	\$1.00
227	1943 P	NICK	2% STRAIGHT CLIP 2:30	AU	MB	\$4.00
228	1946	NICK	2% CURVED CLIP 6:30	VF	MB	\$1.00
229	1951 D	NICK	3% CURVED CLIP 8:00	VF	MB	\$1.50

230	1960	NICK	2% CURVED CLIP 11:30	EF	MB	\$1.50
231	1964 D	NICK	RIM CLIP 7:00	VF	MB	\$1.00
*	232	1964 D	NICK 3% CURVED CLIP 5:30 + 5% 11:30	AU	MB	\$4.00
*	233	1970 D	NICK 20% CURVED CLIP 7:00	BU	MB	\$15.00
234	1972	NICK	5% CURVED CLIP 8:30	AU	MB	\$1.00
235	1976	NICK	5% CURVED CLIP 5:00	UNC	MB	\$1.50
236	1979 D	NICK	3% CURVED CLIP 10:30 + RIM CLKIP 8:00	AU	MB	\$1.50
237	1979	NICK	5% CURVED CLIP 8:30	BU	MB	\$2.00
238	1987	NICK	2 5% CLIPS AT 5:30 & 8:00	BU	MB	\$3.00
239	1993 D	NICK	2% CURVED CLIP 2:30	UNC	MB	\$1.50
240	1865	2CENT	ROTATED REVERSE 45 DEGREES	AG/G	MB	\$9.00
241	1839	CENT	10% SPLIT OFF LAMINATION + 2% CLIP 8:30 LIGHT CORROSION	VF+	MB	\$45.00
*	242	N.D.	CENT LARGE CORONET TYPE, 18% OFF CENTER 7:00	VG	MB	\$175.00
*	243	1900	CENT 15% OFF CENTER 6:00	EF	MB	\$55.00
244	1891	CENT	REPUNCHED DATE FS-301 SILVER PLATED	AU	MB	\$6.00
245	1907	CENT	REPUNCHED 7 IN DATE	GD	MB	\$1.50
246	1864 L	CENT	REVERSE ROTATED 180 DEGREES	GD	MB	\$42.00
247	N.D.	CENT	TYPE 2 COPPER PLANCHET	UNC	MB	\$1.00
248	N.D.	CENT	TYPE 1 UNPLATED ZINC BLANK	BU	MB	\$6.00
249	N.D.	CENT	TYPE 2 UNPLATED ZINC PLANCHET	BU	MB	\$6.00
250	N.D.	CENT	TYPE 2 COPPER COATED ZINC PLANCHET	BU	MB	\$1.50
*	251	199X	CENT VERY WIERED SLIPPED CAP BROCKAGED OBVERSE OFF CENTER OBVERSE WITH HIGH RIM GREAT STUDY COIN	UNC	MB	\$230.00
252	1940 S	CENT	UNCENTERED BROADSTRIKE COUNTER SKID REV	AU	MB	\$18.00
253	1941 S	CENT	CENTERED BROADSTRIKE	AU	MB	\$18.00
254	1941 S	CENT	UNCENTERED BROADSTRIKE	UNC	MB	\$24.00
255	1985	CENT	UNCENTERED BROADSTRIKE	UNC	MB	\$2.50
256	1988	CENT	UNCENTERED BROADSTRIKE	UNC	MB	\$2.00
256	1989	CENT	UNCENTERED BROADSTRIKE	BU	MB	\$2.00
258	1990	CENT	UNCENTERED BROADSTRIKE	BU	MB	\$2.50
259	1991	CENT	UNCENTERED BROADSTRIKE	BU	MB	\$2.50
*	260	1992	CENT UNCENTERED BROADSTRIKE LOOKS 10% OFF CENTER	BU	MB	\$2.50
261	1999	CENT	UNCENTERED BROADSTRIKE + CLASHED DIE OBV	BU	MB	\$12.00
*	262	2000	CENT NICKEL SIZE CENTERED BROADSTRIKE WITH CHAIN STRIKE 12:00	BU	MB	\$25.00
263	2000	CENT	CENTERED BROADSTRIKE WITH 2% CLIP 1:30	BU	MB	\$12.00
264	2002	CENT	SLIGHTLY UNCENTERED BROADSTRIKE	BU	MB	\$6.00
265	2003 D	CENT	UNCENTERED BROADSTRIKE	BU	MB	\$6.00
266	1953	CENT	DIE BREAKS TOP OF BOTH WHEAT STALKS	VF	MB	\$0.25
267	1954 S	CENT	BIE DIE BREAK, BETTER DATE	VF	MB	\$1.50
268	1954 S	CENT	BE DIE BREAK,	VF	MB	\$1.50
269	1955	CENT	MULTI CRACKED SKULL	VF	MB	\$0.25
270	1955	CENT	MAJOR CRACKED SKULL	AU	MB	\$1.00
271	1955	CENT	CRACKED SKULL + DIE BREAK ACROSS SHOULDER	EF	MB	\$2.50
272	1987	CENT	DIE CRACK 12:00 TO A DIE CHIP BACK OF HEAD	UNC	MB	\$0.25
273	1952	CENT	CRACK THRU PLANCHET 7:00 TO T IN LIBERTY	AU	MB	\$6.00
*	274	1857	CENT PARTIALLY DETACHED LAM CLAMSHELL 7:00 TO 10:00	GD	MB	\$35.00
275	1913	CENT	LAMINATION 10:00 TO 3:00 + MORE IN FIELD	GD	MB	\$1.50
276	1914	CENT	LAMINATION CRACK 10:00 ONTO SHOULDER	VG	MB	\$0.50
277	1916	CENT	LG LAM LAYER OFF 1:00 TO 7:00 TO 9:00 EDGE	VG	MB	\$1.00
278	1917	CENT	LAM 2:00 TO 5:00 SOME ATTACHED & SOME GONE	FIN	MB	\$0.25
279	1920	CENT	LAMINATION REVERSE 1:00 TO 6:30	VG	MB	\$0.25
280	1936 S	CENT	LAMINATION REVERSE 4:30 TO 7:30	VG	MB	\$0.50

281	1947	CENT	LAM FLAP 1:00 TO 9:30 + STREAK 2:00 TO 8:00	VF	MB	\$1.00	
282	1957 D	CENT	LAMINATION STREAK 12:00 TO 5:00 OBVERSE	VF	MB	\$0.50	
283	1961 D	CENT	LAM FLAP 2:00 TO 3:00 ATTACHED IN FIELD	EF	MB	\$1.00	
284	1960 D	CENT	LAMINATION FLAPS ON COAT & DATE + OTHERS	EF	MB	\$0.50	
285	1979	CENT	LAM STREAK 3:00 TO 10:00 CHUNK OUT IN FIELD	VF	MB	\$1.00	
286	1883	CENT	LAMINATION STREAK 12:00 TO 5:00 INDIAN	GD	MB	\$3.00	
287	1946 D	CENT	STRUCK THRU REVERSE PRETTY GOOD SIZE	VF	MB	\$0.50	
288	1999 D	CENT	BROADSTRIKE	MS60	MB	\$6.00	
289	1987	CENT	CLASHED DIE OBVERSE	UNC+	MB	\$6.00	
290	1909	CENT	STRUCK THRU CENTER REVERSE	EF	MB	\$4.00	
291	1955 S	CENT	STRUCK THRU GREASE? OBVERSE & REVERSE	VF	MB	\$0.50	
293	1969 D	CENT	STRUCK THRU HEAVY FILLED DIES OBV & REV	BU	MB	\$0.50	
*	294	1970	CENT	DEEP STRUCK THRU REVERSE 9:00	BU	MB	\$1.00
295	1970	CENT	SMALL ROUND STRUCK THRU ABOVE STEPS REVERSE	BU	MB	\$1.00	
296	1970 S	CENT	STRUCK THRU ALONG EDGE & 11:00 OBVERSE LOOKS LIKE A CUD	BU	MB	\$3.00	
297	1918 S	CENT	BAD METAL MIX STREAKS TOP TO BOTTOM OBVERSE	FIN	MB	\$0.25	
298	1925	CENT	STREAKY METAL MIX + LAM 10:00 ACROSS ONE REVERSE	VF	MB	\$0.25	
299	1927	CENT	BAD METAL MIX + SOME OUT BELOW EPURIBUS	EF	MB	\$0.50	
300	1931	CENT	BAD METAL MIX + LAMINATIONS OBVERSE	FIN+	MB	\$0.50	
301	1933	CENT	BAD METAL MIX + LAMINATION OUT BRLow DATE	UNC	MB	\$6.00	
302	1938	CENT	MAJOR BAD METAL MIX LOOKS LIKE WOOD GRAIN	EF	MB	\$0.50	
303	1955 S	CENT	STREAKS OF BAD METAL MIX ACROSS OBVERSE	EF	MB	\$3.00	
304	1943	CENT	STRUCK THRU GOOD SIZE FRONT OF CHIN	BU	MB	\$2.00	
*	305	N.D.	CENT	STRUCK THRU CAPPED DIE, REV BROCKAGE ON OBV SLIGHT GHOST LINCOLN	UNC	MB	\$35.00
*	306	(1966)	CENT	STRUCK WITH LATE STAGE CAPPED DIE	AU	MB	\$15.00
*	307	N.D.	CENT	ZINC, STRUCK WITH LATE STAGE CAPPED DIE	UNC	MB	\$18.00
308	1959	CENT	STRUCK ON A SPLIT BEFORE STRUCK PLANCHET 24 GRAINS	EF	MB	\$15.00	
*	309	1974 D	CENT	STRUCK ON A SPLIT BEFORE STRUCK PLANCHET 25.6 GRAINS SOME EJECTION SCRATCHES	UNC	MB	\$12.00
310	1969 S	CENT	MACHINE DOUBLING	UNC	MB	\$4.00	
*	311	1972	CENT	GREAT RIM BURR 12:00 TO TOP OF HEAD	BU	MB	\$3.00
312	1966	CENT	LAMINATIONS ACROSS HEAD	AU	MB	\$3.00	
313	1964	CENT	LAMINATIONS FLAP LARGE ON HEAD	EF	MB	\$5.00	
*	314	1959 D	CENT	CUD 7:00 OBVERSE LC-59D-1	UNC	MB	\$3.50
*	315	N.D.	CENT	COPPER, LARGE CUD OBVERSE 3:00 TO 6:30 FIND NO LISTING A BIGGIE	UNC	MB	\$37.00
*	316	1973 D	CENT	ATHIEST CUD 12:00 LC-73-9	UNC	MB	\$29.00
*	317	2001	CENT	LARGE BROADSTRIKE + 35% PARTIAL BROCKAGE A 2 LEVEL NEAT!!	BU	MB	\$35.00
*	318	2000	CENT	15%PARTIAL BROCKAGE 9:30 BY AN OFF CENTER COIN, EJECT SCRATCH ON OBVERSE	BU	MB	\$12.00
319	1960	CENT	DIE CHIP OUT ON NECK	UNC	MB	\$0.50	
320	1960 D	CENT	FILLED 0 IN DATE	VF	MB	\$0.25	
321	1957	CENT	TAPERED THIN EDGE 1:00 TO 5:00	UNC	MB	\$1.00	
*	322	1863	CENT	CRACK THRU PLANCHET 6:30	VG	MB	\$11.00
*	323	N.D.	CENT	REVERSE DIE CAP, GHOST LINCOLN NEAT WOWSER!!	BU	MB	\$75.00
324	1944 D	CENT	D OVER S TYPE II	VF	MB	\$45.00	
325	1936	CENT	DOUBLED DIE OBVERSE 3-O-V FS103	VG+	MB	\$20.00	
326	1941	CENT	DOUBLED DIE OBVERSE 2-O-I FS-102	VF	MB	\$45.00	
327	1943	CENT	DOUBLED DIE OBVERSE 1-O-VI FS-101	EF	MB	\$100.00	



A 82432903 A

A 82432903 A

51



52



53



54



59



55



56



57



58



60



61



62



63



66



69



67



67



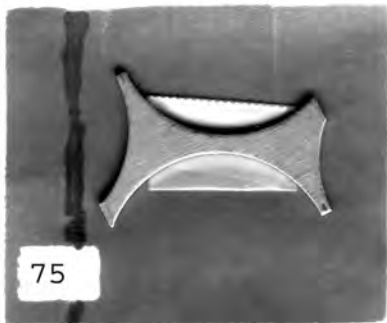
68



64



65



SUBSCRIPTION FOR THE YEAR 2011

DON'T MISS ANY OF THESE SALES!

SEMI-MONTHLY ERROR CATALOGS PUBLISHED FOR THE PAST 24 YEARS!

THE SUBSCRIPTION PRICE IS \$8.00 FOR SIX CATALOGS ON A SEMI-MONTHLY BASIS. COST OF PRINTING AND MAILING THE CATALOGS FOR A YEAR WAS \$15.64 PER SUBSCRIPTION. WE DON'T MIND SENDING CATALOGS TO COLLECTORS OF CATALOGS IF YOU SHARE IN THE COST OF THE CATALOGS.

WE WILL AUTOMATICALLY BILL \$8.00 SUBSCRIPTION DUES TO ALL WINNING BIDERS WHO HAVE NOT YET PAID UNLESS OTHERWISE PAID OR INFORMED.

WE HAVE A FULL SERVICE COIN & STAMP STORE THAT IS LOCATED IN HILLDALE MALL IN MADISON, WI. PLEASE FEEL FREE TO STOP BY IF YOU ARE IN TOWN.

WE ARE ALSO ENTHUSIASTIC BUYERS OF ALL ERRORS AS WELL AS NORMAL COINS, STAMPS AND COLLECTIBLE RED/BLUE BOOKS!

PLEASE VISIT OUR WEB SITE AT www.Jimscoins.com MANY OF THE PHOTOS IN THE WEB SITE VERSION ARE *FULL COLOR*.

NEW PROGRAM: FREE CONECA MEMBERSHIP UPON REQUEST FOR NEW MEMBERS WITH WINNING BIDS TALLING \$50 OR MORE.

CONSIGNORS: GETTING TOUGHER TO FIND ERRORS TO FILL THE AUCTIONS. IF YOU HAVE SOME TO SELL OR CONSIGN, PLEASE LET US KNOW. TERMS ARE 15% COMMISSION, YOU SET THE MINIMUM BID AND NO CHARGE IF THE COIN DOES NOT SELL. ALSO BID GENEROUSLY SO WE CAN AFFORD TO BUY SOME MORE. HEH-HEH. -LEN & JIM

NOTES FOR J-48: THIS SALE HAS THE THEME OF "WRONG PLANCHET." WRONG PLANCHETS HAVE PROVEN TO BE ONE OF THE MOST POPULAR AND EXCITING AREAS OF THE HOBBY TO COLLECT, AND THIS SALE HAS A BUNCH OF THEM—WRONG DENOMINATIONS, SCRAPS, BOW-TIES, U.S. STRUCK ON STRUCK FOREIGN COINS, U.S. DOUBLE DENOMINATIONS, THIS SALE HAS IT ALL. REMEMBER IF YOU NEED EXTRA CASH, WE WILL BUY OR AUCTION YOUR DUPLICATE ERRORS AND EVEN NORMAL COINS. CALL, EMAIL, OR WRITE WITH WHAT YOU HAVE -LEN & JIM

NAME _____

ADDRESS _____

CITY _____ STATE _____ ZIP _____

PHONE (OPTIONAL) _____

YOUR ADDRESS LABEL HAS A YEAR ON IT SO YOU WILL KNOW WHEN YOUR SUBSCRIPTION EXPIRES.THANKS AGAIN TO ALL OF YOU! -LEN & JIM



102



103



104



105



125



126



129



130



133



135



136



140



159



179



181



182



183



184



186



191



192



196



211



218



219



221



222



223



224



232



233



242



243



251



260



262

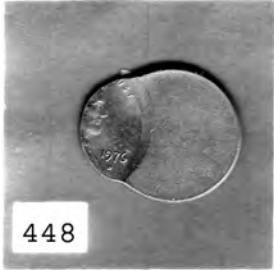
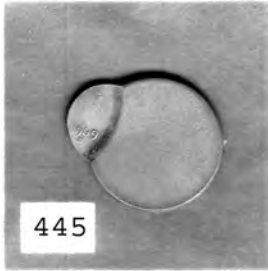


274



294







521



528



533



537



538



539



540



541



542



543



545



546



550



556



563

328	1944 D	CENT	D OVER S OVER MINT MARK OMM #1 FS-501	VF	MB	\$145.00
329	1944 D	CENT	D OVER S OVER MINT MARK OMM #2 FS-502	VF	MB	\$45.00
330	1951 D	CENT	D OVER S OVER MINT MARK OMM #1	EF	MB	\$20.00
331	1952 D	CENT	RPM #15 + WRPM #16 D AT BASE OF BUST	VF	MB	\$17.50
332	1952 D	CENT	D OVER S OMM #1 FS-501	EF40	MB	\$30.00
333	1955 D	CENT	DOUBLED DIE OBVERSE -1-O-IV+ FS-101	EF	MB	\$17.50
334	1956 D	CENT	RPM #8 FS 101	AU	MB	\$40.00
335	1960 D	CENT	RPM #100 SM OVER LG DATE STAGE D DD-I-00-III	AU	MB	\$55.00
336	1911 S	CENT	RPM #2	VG	MB	\$50.00
337	1912 S	CENT	RPM #1	FIN+	MB	\$60.00
338	1925 S	CENT	RPM #3	FIN	MB	\$8.50
339	1927 D	CENT	RPM #1	EF	MB	\$30.00
340	1934 D	CENT	RPM #1	VF	MB	\$6.00
341	1934 D	CENT	RPM #2 STAGE C	VF	MB	\$5.75
342	1934 D	CENT	RPM #3	VG	MB	\$3.75
343	1934 D	CENT	RPM #4 FS-502	GD+	MB	\$2.75
344	1938 D	CENT	RPM #2	VG	MB	\$2.00
345	1938 S	CENT	RPM #1 FS-501	VG	MB	\$4.00
346	1938 S	CENT	RPM #2 FS-502	VG	MB	\$2.25
347	1939 D	CENT	RPM #1	FIN	MB	\$2.00
348	1939 S	CENT	RPM #1	VF	MB	\$2.75
349	1939 S	CENT	RPM #2	VF	MB	\$2.75
350	1940 D	CENT	RPM #2	VF	MB	\$1.75
351	1942 D	CENT	RPM #4	FIN	MB	\$1.75
352	1944 D	CENT	RPM #1	AU	MB	\$4.00
353	1944 D	CENT	RPM #2	EF	MB	\$2.75
354	1944 D	CENT	RPM #8	EF	MB	\$1.50
355	1944 D	CENT	RPM #10	VF	MB	\$1.75
356	1944 D	CENT	RPM #13	AU	MB	\$3.25
357	1944 S	CENT	RPM #1	VF	MB	\$1.75
358	1944 S	CENT	RPM #3	FIN	MB	\$1.50
359	1945 D	CENT	RPM #1 + RPM #3 2 COIN LOT	VF	MB	\$3.50
360	1945 D	CENT	RPM #4	VF	MB	\$1.75
361	1945 D	CENT	RPM #5	AU	MB	\$3.00
362	1945 D	CENT	RPM #6	VF	MB	\$1.75
363	1945 S	CENT	RPM #6	VF	MB	\$1.75
364	1945 S	CENT	RPM #9	FIN	MB	\$1.50
365	1945 S	CENT	RPM #15	VF	MB	\$1.50
366	1946 D	CENT	RPM #1 + RPM #10 2 COIN LOT	EF	MB	\$4.75
367	1946 D	CENT	RPM #12	AU	MB	\$3.00
368	1946 D	CENT	RPM #17	VF	MB	\$1.75
369	1946 S	CENT	RPM #11	EF	MB	\$2.25
370	1947 D	CENT	RPM #1	FIN	MB	\$1.50
371	1947 S	CENT	RPM #4	EF	MB	\$2.75
372	1947 S	CENT	RPM #5	EF	MB	\$2.50
373	1948 D	CENT	RPM #4 + RPM #5 2 COIN LOT	VF	MB	\$3.50
374	1948 S	CENT	RPM #1	VF	MB	\$1.75
375	1949 D	CENT	RPM #1 FS-501	EF	MB	\$2.25
376	1949 D	CENT	RPM #10	AU	MB	\$2.75
377	1949 S	CENT	RPM #2	EF+	MB	\$2.00
378	1950 D	CENT	RPM #1	EF	MB	\$2.00
379	1950 D	CENT	RPM #3	VG	MB	\$1.50
380	1950 D	CENT	RPM #5	VF	MB	\$1.75
381	1950 S	CENT	RPM #2	FIN	MB	\$1.50
382	1950 S	CENT	RPM #3	VF	MB	\$1.75
383	1950 S	CENT	RPM #4	EF	MB	\$2.00
384	1950 S	CENT	RPM #5	AU	MB	\$2.75

385	1950 S	CENT	RPM #9	AU	MB	\$2.75
386	1950 S	CENT	RPM #10	EF	MB	\$2.00
387	1950 S	CENT	RPM #12	VG+	MB	\$1.75
388	1951 D	CENT	RPM #1	FIN+	MB	\$1.50
389	1951 D	CENT	RPM #2	VF	MB	\$1.75
390	1951 D	CENT	RPM #4	EF	MB	\$1.75
391	1951 D	CENT	RPM #8	VF	MB	\$1.75
392	1951 D	CENT	RPM #20	AU	MB	\$2.75
393	1951 D	CENT	RPM#23	VF	MB	\$1.75
394	1951 S	CENT	RPM #2	VF	MB	\$1.75
395	1951 S	CENT	RPM #4	FIN	MB	\$1.50
396	1951 S	CENT	RPM #8	VF	MB	\$1.75
397	1952 D	CENT	RPM #3 + RPM #6 + RPM #12 3 COIN LOT	EF	MB	\$6.00
398	1952 D	CENT	WRPM #16 = RPM #15	VF+	MB	\$15.00
399	1952 D	CENT	RPM #17	VF+	MB	\$1.75
400	1952 D	CENT	RPM #20	AU	MB	\$2.75
401	1952 D	CENT	RPM #22	EF	MB	\$2.00
402	1952 D	CENT	RPM #23	AU	MB	\$3.50
403	1952 S	CENT	RPM #4 + R[M #5	VF	MB	\$3.50
404	1952 S	CENT	RPM #9	EF	MB	\$2.00
405	1952 S	CENT	RPM #16 + RPM #17	FIN	MB	\$3.00
406	1952 S	CENT	RPM #22	EF	MB	\$2.00
407	1953 D	CENT	RPM #1	FIN	MB	\$2.00
408	1953 D	CENT	RPM #2	EF	MB	\$2.00
409	1953 D	CENT	RPM #4	VF	MB	\$1.75
410	1953 D	CENT	RPM #6	AU	MB	\$2.75
411	1953 D	CENT	RPM #11 + RPM # 12	VF	MB	\$2.75
412	1953 D	CENT	RPM #14	AU	MB	\$2.75
413	1953 D	CENT	RPM #20	AU	MB	\$2.75
414	1953 D	CENT	RPM #23	AU	MB	\$2.75
415	1953 S	CENT	RPM #2	EF	MB	\$2.00
416	1953 S	CENT	RPM #3 + RPM #4 + RPM #5	VF	MB	\$5.25
417	1953 S	CENT	RPM #6 + RPM # 10 + RPM #13	VF	MB	\$5.25
418	1954 D	CENT	RPM #1	VF	MB	\$2.00
419	1954 S	CENT	RPM #4	VF	MB	\$1.75
420	1954 S	CENT	RPM #7	EF	MB	\$2.00
421	1954 S	CENT	RPM #10	FIN	MB	\$1.50
422	1955 D	CENT	RPM #1	AU	MB	\$2.75
423	1953 D	CENT	RPM #2	VF	MB	\$1.75
424	1955 D	CENT	RPM #3	EF	MB	\$2.25
425	1955 D	CENT	RPM #4	VF	MB	\$1.75
426	1955 D	CENT	RPM #11	EF	MB	\$2.00
427	1955 S	CENT	RPM #5	EF	MB	\$2.00
428	1956 D	CENT	RPM #3	VF	MB	\$1.75
429	1956 D	CENT	RPM #4	VF	MB	\$1.75
430	1956 D	CENT	RPM #5	AU	MB	\$2.75
431	1956 D	CENT	RPM #6	EF	MB	\$2.00
432	1956 D	CENT	RPM #8 FS 01-1956 D-501	VF	MB	\$24.00
433	1956 D	CENT	RPM #18	VG	MB	\$15.00
434	1957 D	CENT	RPM #3	VF	MB	\$1.75
435	1957 D	CENT	RPM #4 + RPM #5	EF	MB	\$4.00
436	1957 D	CENT	RPM #6	FIN	MB	\$1.50
437	1957 D	CENT	RPM #7	AU	MB	\$2.50
438	1957 D	CENT	RPM #15	VF	MB	\$1.75
439	1958 D	CENT	RPM #1	VF	MB	\$1.75
440	1925	CENT	LAMINATION STREAK 6:00 TO 11:00	VG	MB	\$0.50
*	441	1920 S	CENT LARGE LAM 5:30 TO 9:30 OBV BACK OF LINCOLN	FIN	MB	\$1.50

* 442	1936	CENT	10% OFF CENTER 8:00	AU	MB	\$25.00
* 443	1941 S	CENT	10% OFF CENTER 5:30	UNC	MB	\$26.00
* 444	1958 X	CENT	70% OFF CENTER 7:30 RED COPPER	UNC	MB	\$95.00
* 445	1969 D	CENT	85% OFF CENTER 9:00 FULL DATE & MINT MARK SM SPOT	AU	MB	\$14.00
446	1972	CENT	10% OFF CENTER 8:00	BU	MB	\$12.00
* 447	1973 D	CENT	30% OFF CENTER ON 3 CLIPS 35% 9:00, 5% 5:00, 10% 12:00, 2% 8:00 WOWSER!	UNC	MB	\$110.00
* 448	1976 D	CENT	60% OFF CENTER 10:00	UNC	MB	\$5.00
* 449	1976 D	CENT	60% OFF CENTER 8:30	UNC	MB	\$5.00
450	1983	CENT	60% OFF CENTER 8:30	BU	MB	\$5.00
451	1983	CENT	60% OFF CENTER N7:30	UNC	MB	\$5.00
452	1983	CENT	60% OFF CENTER 8:00	UNC	MB	\$5.00
453	1982	CENT	60% OFF CENTER 10:30	BU	MB	\$5.00
* 454	1983	CENT	60% OFF CENTER 8:00	BU	MB	\$5.00
455	1984	CENT	60% OFF CENTER 8:00	UNC	MB	\$5.00
456	1984	CENT	60% OFF CENTER 8:30	BU	MB	\$5.00
457	1984	CENT	40% OFF CENTER 1:00	BU	MB	\$5.00
458	1984	CENT	40% OFF CENTER 10:00	BU	MB	\$5.00
459	1985	CENT	50% OFF CENTER 12:30	BU	MB	\$5.00
460	1988	CENT	5% OFF CENTER 11:00	UNC	MB	\$2.50
461	1989	CENT	5% OFF CENTER 3:00	BU	MB	\$2.50
* 462	1890	CENT	INDIAN, 10% OFF CENTER 6:00 DARK	GD	MB	\$35.00
463	1990	CENT	5% OFF CENTER 7:00	BU	MB	\$2.50
* 464	1996	CENT	50% OFF CENTER 8:00	UNC	MB	\$10.00
465	1999	CENT	60% OFF CENTER 8:00	UNC	MB	\$5.00
* 466	1999	CENT	30% OFF CENTER 7:30 7:00	BU	MB	\$5.00
467	1999	CENT	20% OFF CENTER 7:00	BU	MB	\$5.00
468	1999	CENT	20% OFF CENTER 2:30	BU	MB	\$5.00
469	1999	CENT	5% OFF CENTER 6:30	BU	MB	\$5.00
470	2003	CENT	5% OFF CENTER DETAILS MISSING ON REVERSE	BU	MB	\$6.00
471	2001	CENT	35% OFF CENTER 10:30 WITH 15% CURVED CLIP 1:00	BU	MB	\$25.00
472	2001	CENT	15% OFF CENTER 8:30	BU	MB	\$3.00
473	2001	CENT	15% OFF CENTER 7:00	BU	MB	\$3.00
474	2000	CENT	10% OFF CENTER 3:00	UNC	MB	\$3.00
* 475	N.D.	CENT	ZINC 45% OFF CENTER 2:00 WITH NEAT "GUITAR PICK" CHAIN STRIKE	UNC	MB	\$12.00
476	1919	CENT	3% CURVED CLIP 9:00	VG	MB	\$0.50
* 477	1920	CENT	10% CURVED CLIP 5:00	AU	MB	\$12.00
478	1925	CENT	RIM CLIP 7:30	FIN	MB	\$0.50
479	1927	CENT	5% CURVED CLIP 5:00	FIN	MB	\$1.00
480	1934	CENT	2% CURVED CLIP 2:00 + 6% CURVED CLIP 10:00	VF	MB	\$2.50
* 481	1937	CENT	10% STRAIGHT CLIP 1:00	VF	MB	\$3.00
482	1941	CENT	5% CURVED CLIP 10:30	AU	MB	\$1.00
483	1941	CENT	RIM CLIP 2:00	EF	MB	\$0.50
484	1941	CENT	STRAIGHT TAPERED EDGE CLIP 10:00	VF	MB	\$1.00
485	1941 S	CENT	5% CURVED CLIP 5:00 + RIM CLIP 11:00	FIN	MB	\$1.50
486	1942	CENT	RIM CLIP 2:00	VF	MB	\$0.50
487	1944	CENT	10% CURVED CLIP 8:00	AU	MB	\$1.50
488	1944	CENT	2% CURVED CLIP 2:00	FIN	MB	\$0.50
489	1944	CENT	RIM CLIP 11:00	AU	MB	\$1.00
490	1945	CENT	5% CURVED CLIP 12:00 + DISK CLIP 9:30	EF	MB	\$1.50
* 491	1945	CENT	5% RAGGED CLIP 5:00	EF	MB	\$3.00
492	1945	CENT	8% CURVED CLIP 9:00	EF	MB	\$0.50
493	1946	CENT	10% CURVED CLIP 2:00	EF	MB	\$1.00
494	1946	CENT	CLIP AT 1:00 BLACK STAIN OBVERSE	VG	MB	\$0.50

495	1946 S	CENT	3% CURVED CLIP 10:00	VG	MB	\$1.00
496	1947	CENT	5% STRAIGHT RAGGED EDGE CLIP 5:00	AU	MB	\$2.00
497	1952	CENT	3% STRAIGHT CLIP 7:00	EF	MB	\$1.00
498	1953 D	CENT	2% CURVED CLIP 11:30	EF	MB	\$0.50
499	1955	CENT	2% CURVED CLIP 11:30	VF	MB	\$0.50
500	1956 D	CENT	5% CURVED CLIP 4:00	EF	MB	\$0.50
501	1957	CENT	2% CURVED CLIP 5:00	EF	MB	\$0.50
502	1957	CENT	7% STRAIGHT CLIP 11:00	UNC	MB	\$3.00
503	1959	CENT	3% CURVED CLIP 5:00	BU	MB	\$1.00
504	1960	CENT	3% CURVED CLIP 7:30	AU	MB	\$0.50
505	1960	CENT	5% CURVED CLIP 2:00	EF	MB	\$0.50
506	1960	CENT	5% CURVED CLIP 10:30 + RIM CLIP 2:00	EF	MB	\$0.50
507	1962	CENT	3% CRVED CLIP 1:30	EF	MB	\$1.50
508	1964	CENT	5% CURVED CLIP 10:00	AU	MB	\$0.50
509	1964 D	CENT	3% CURVED CLIP 12:00	AU	MB	\$0.50
* 510	1964 D	CENT	10% CURVED CLIP 10:30	UNC	MB	\$1.50
511	1964 D	CENT	5% CURVED CLIP 10:30	AU	MB	\$0.50
* 512	1965	CENT	20% CURVED CLIP 11:00	AU	MB	\$5.00
513	1965	CENT	2% CURVED CLIP 11:00	BU	MB	\$1.00
514	1966	CENT	3% CURVED CLIP 5:30 + 5% AT 11:30	UNC	MB	\$2.50
515	1967	CENT	8% CURVED CLIP 2:00	UNC	MB	\$1.00
516	1968	CENT	5% CURVED CLIP 5:00 + RIM CLIP 8:00	BU	MB	\$3.50
517	1968 S	CENT	2% CURVED CLIP 2:00	BU	MB	\$3.50
518	1969 S	CENT	15% CURVED CLIP 7:00	BU	MB	\$6.00
519	1970	CENT	5% CURVED CLIPS AT 4:00 & 6:00	UNC	MB	\$3.00
520	1972	CENT	7% CURVED CLIP 11:00	UNC	MB	\$1.00
521	1979 D	CENT	UNCENTERD BROADSTRIKE + 3 CLIPS, 25% AT 10:30 + 3% AT 1:00, 3% 8:00 SUPER NEAT	UNC	MB	\$45.00
522	1979 D	CENT	5% CURVED CLIP 8:30	BU	MB	\$1.00
523	1982	CENT	ZINC, 5% CURVED CLIP 7:30	AU	MB	\$3.00
524	1982 D	CENT	ZINC 5% CURVED CLIP 8:30	BU	MB	\$1.50
525	1983 D	CENT	5% CURVED CLIP 8:00	UNC	MB	\$4.00
527	1985 D	CENT	5% CURVED CLIP 10:30 + 2% 1:00 + STRANGE REEDED EDGE	AU	MB	\$6.00
* 528	1985 D	CENT	15% CURVED CLIP 2:30	AU	MB	\$4.50
529	1997 D	CENT	3% CURVED CLIP 1:30	UNC	MB	\$4.00
530	1999 D	CENT	4% CURVED CLIP 5:00 + 2% AT 3:00	UNC	MB	\$6.00
526	1984 D	CENT	5% CURVED CLIP 2:00	EF	MB	\$2.50
531	1998	CENT	5% CURVED CLIP 8:30	BU	MB	\$4.50
532	1998 D	CENT	10% CURVED CLIP 4:00 + RIM CLIP 1:00	BU	MB	\$3.50
* 533	199X D	CENT	ZINC, 10% CURVED CLIP 4:00 + 3% CURVCED 6:30	BU	MB	\$3.00
534	2000 D	CENT	5% CURVED CLIP 8:30	UNC	MB	\$4.00
535	2000 D	CENT	5% CURVED CLIP 10:30	UNC	MB	\$4.00
536	2000 D	CENT	5% CURVED CLIP 2:30	UNC	MB	\$4.00
* 537	1955	OTHER	BRAZIL 50c, DOUBLE STRUCK IN COLLAR NEAT	AU	MB	\$39.00
* 538	1945	OTHER	BRAZIL 1 CRUZEIRO, NICE CUD 10:00 TO 1:00 + SOME RIM CUDS ADJECENT	AU	MB	\$12.00
* 539	1946	OTHER	BRAZIL 20c, DOUBLE STRUCK IN COLLAR SLIGHT ROTATION BETWEEN STRIKES	VF	MB	\$42.00
* 540	2002	OTHER	BRAZIL 10c, LARGE RETAINED CUD OBVERSE 12:00 TO 2:30	EF	MB	\$12.00
* 541	1980	CENT	CANADA, 15% OFF CENTER 9:00	UNC	MB	\$12.00
* 542	N.D.	NICK	CANADA, 25% OFF CENTER 7:00	BU	MB	\$38.00
* 543	1965	DIME	CANADA, 10% OFF CENTER 12:00 SILVER LIGHT OBVERSE SCRATCH	BU	MB	\$16.00
544	1962	DIME	CANADA, 7% CURVED CLIP 12:00	AU58	MB	\$8.00
* 545	1969	QUAR	CANADA, 13% OFF CENTER 12:00	UNC	MB	\$45.00
* 546	(1875)	OTHER	CHINA KUANG-HSU 10 CASH, 15% PARTIAL	VF	MB	\$26.00

BROCKAGE 9:00					
547 N.D.	OTHER	REPUBLIC OF CHINA 10 CASH, LARGE CUD OBVERSE 5:00	VF	MB	\$14.00
548 N.D.	OTHER	CHINA KIANGSU 10 CASH, CUD 1:30 + CUD REVERSE	VF	MB	\$12.00
549 N.D.	OTHER	HONAN CHINA 10 CASH, CUD OBVERSE 9:00 TO 10:30	VF	MB	\$12.00
* 550 1906	OTHER	KIANZ CHINA 10 CASH, 10% INDENT 6:00	FIN	MB	\$11.00
551 (1920)	OTHER	CHINA 10 CASH, CUD OBVERSE 2:00 TO 4:00	VF	MB	\$14.00
552 (1879)	OTHER	KUANG-HAU CHINA 10 CASH, MIRROR BROCKAGE OBVERSE ON REVERSE	VF	MB	\$60.00
553 N.D.	OTHER	HUNAN CHINA 20 CASH, CRACK THRU PLANCHET + DEEP LAMINATION OBVERSE	VF	MB	\$15.00
554 1911	OTHER	REPUBLIC OF CHINA 50 CASH, 2 CUDS	FIN	MB	\$32.00
555 1971	20c	COLUMBPA, FILLED DIE AT AV OF CENTAVOS	VF	MB	\$0.50
* 556 1947	OTHER	COSTA RICA 5c, CUPPED OFF CENTER 8:00	EF	MB	\$26.00
557 1946	OTHER	CUBA 5c, FILLED DIES STRUCK AT U.S. MINT	EF	MB	\$0.50
558 1970	OTHER	DEMARK KRONE, LAMINATION 1:30	AU	MB	\$0.50
559 1901	OTHER	INDIA 1/12 ANNA, CUD 6:30 TO 8:00	EF	MB	\$5.00
560 N.D.	OTHER	JAPAN 50 SEN, LAMINATION ACROSS OBVERSE 4:00 TO 8:00	UNC	MB	\$0.50
561 N.D.	OTHER	JAPAN BRESS 5c SIZE, LAMINATION ACROSS OBVERSE	VF	MB	\$0.50
562 1975	CENT	PANAMA KM-33.1, ON A KM-22 BRONZE PLANCHET	UNC	MB	\$95.00
563 (11969)	OTHER	PHILIPPINES 25c, STRUCK 24% OFF CENTER 10:30	BU	MB	\$22.00
564 2000	OTHER	PETER PAPER PIZZA TOKEN, 25c SIZA BRASS, CAPPED DIE LIKE CUPPED UP NEAT	UNC	MB	\$19.00
565 1959	OTHER	BOOK, UNITED STATES PATTERN, EXPERIMENTAL AND TRIAL PIECES BY J.HEWITT JUDD,M.D. TOUGH TO FIND BOOK	AU	MB	\$18.00
566 N.D.	OTHER	BOOK, MISSTRUCK ROMAN EMPIRE BRONZE COINS BY DENNIS O'REILLY. 72 PAGE INTERESTING BOOK	UNC	MB	\$6.50
567 1981	OTHER	BOOK, HOW ERROR COINS ARE MADE IN U.S. MINTS BY ARNIE MARGOLIS 90 PAGES WITH MANY PICTURES	NEW	MB	\$5.00
568 1976	OTHER	BOOK, MAJOR VARIETY AND ODDITY GUIDE OF U.S. COINS BY SPADONE 6TH EDITION	AU	MB	\$3.50
569 1974	OTHER	BOOK, THE OFFICAL GUIDE TO MINT ERRORS BY A.HERBERT A LOT OF GOOD INFORMATION ON ERRORS	AU	MB	\$3.50
570 1963	OTHER	BOOK, MAJOR VARIETY & ODDITY GUIDE 98 PAGES 2ND EDITON	EF	MB	\$3.50
571 1961	OTHER	BOOK, MISTRIKES AND ODDITIES IN THE LINCOLN CENT BY E.G. JEWETT 35 PAGE PAPER BACK INTERESTING	AU	MB	\$2.50
572 1972	OTHER	BOOK, MODERN MINT MISTAKES BY STEINER & ZIMPFER 149 PAGES LOTS OF NEA ERROR PICS	AU	MB	\$5.00
573 1963	OTHER	BOOK, THE NUMISMATIC FLYING EAGLE, IMDIAN AND LINCOLN CENT ERRORS BY M. KOLMAN,JR, 64 PAGES WITH SOME NEAT IND	AU	MB	\$4.50
574 1985	OTHER	CATALOG THE NUMISMISTAKE BY LONESOME JOHN 160 PAGES MOSTLY ERRORS FOR SALE SORRY YOU MISSED THEM HEH!	AU	MB	\$7.50
575 1982	OTHER	CATALOG/BOOK ON FULL STEP NICKELS 20 PAGES + A BUY/BID 4 PAGE SALE BY ADOLF WEISS YOU INTO NICKELS	AU	MB	\$2.50
576 1978	OTHER	VOL.1 THE ENCYCLOPDIA OF DOUBLED DIES 48 PAGES OF HOW & PICTURES TOUGH TO FIND	AU	MB	\$22.00
577 1981	OTHER	VOL. 2 THE ENCYCLOPEDIA OF DOUBLED DIES BY AU WEXLER LOT OF INFO ON D/D	AU	MB	\$22.00
578 1977	OTHER	6TH EDITION, THE STANDARD HANDBOOK OF U.S.	AU	MB	\$9.50

PAPER MONEY O'DONNELL 342 PAGES ON PAPER MONEY						
579	N.D.	OTHER	BOLT COLLECTION OF MAJOR ERRORS BY NUMISMAATICS LINTED MAN SOME RARE ERRORS 14 PAGES	AU	MB	\$4.50
580	1976	OTHER	NUMISMATICS, LTD CATALOG 38 PAGES OF SOME NEAT ERRORS BY FRED WEIBERG	AU	MB	\$7.50
581	1976/7	OTHER	NUMISMATICS, LTD 12 PAGE 8 1/2 x 11 INCH ERROR LIST NUMBER 5 THESE TOUGHT TO FIND EARLY CATALOGS	AU	MB	\$6.50
582	1977/8	OTHER	AS ABOVE PRICE LIST #7 8 PAGES	AU	MB	\$5.50
583	1976	OTHER	AS ABOVE ERROR PRICE LIST #4 10 PAGE PRICE LIST GOOD REFERENCE MATERIAL	AU	MB	\$6.50
584	1977	OTHER	AS ABOVE NUMISMATICS, LTD LIST #6 8 PAGES GREAT STUFF	AU	MB	\$5.50
585	1978	OTHER	NUMIS LTD CATALOG #8 FALL 28 PAGES MAKES ME DROLL	AU	MB	\$7.50
586	1979	OTHER	NUMIS LTD, CATALOG #9, SPRIG MAN SOME NEAT STUFF GREAT REFERENCE CATALOG 39 PAGES	AU	MB	\$7.50
587	1979	OTHER	NUMIS LTD, SUMMER CATALOG 32 [AGES MORE GREAT STUFF 32 PAGES MOSTLY PICTURES	AU	MB	\$7.50
588	1981	OTHER	NUMIS LTD, SPRING #11, 48 PAGES AGAIN MOSTLY PICTURES RARE STUFF	AU	MB	\$7.60
589	1982	OTHER	NUMIS LTD, SPRING # 12, 55 PAGES MOST PICTURES	AU	MB	\$7.50
590	1983	OTHER	NUMIS LTD. SPRING #13 44 PAGES MORE GREAT STUFF	AU	MB	\$7.50
591	1984	OTHER	NUMIS LTD, SUMMER # 14 40 PAGES SAME AS ABOVE YOU WANT SEE SOME OKD STUFF	AU	MB	\$7.50
592	1975/8	OTHER	MIDWEST ERROR COIN COLLECTORS ASSN. 12 ISSUES OF THE CLUBS BULLETINS LOTS OF INFO ABOUT 1 INCH 8 1/2x11 PAGE	AU	MB	\$15.00
593	1996	OTHER	COIN PRICES MAGAZINE NOVEMBER 1996 WITH A UNC BONUS SECTION OF ERROR/VARIETY PRICES		MB	\$3.50
595	1997	OTHER	ERRORSCOPE ERRO CLUB PUBLICATION COMPLETE YEAR 6 ISSUES LOTS OF GOOD INFORMATION	AU	MB	\$12.00
594	1974	OTHER	VARIETY COIN CENTER SINGLE SHEET EXPLAINING THE 1960 DOUBLED DIES WITH CRUDE ILLUSTRATION	AU	MB	\$0.50
596	N.D.	OTHER	NUMISMATIC LTD. 16 PAGE CATALOG OF DIE TRIALS FROM THE JAMES FRASER ESTATE & EXTREMELY RARE TRANSITIONALS NEAT	AU	MB	\$3.50
597	1991/2	OTHER	MIKES RARE COINS CATALOG #2, 48 PAGE ILLUSTRATED CATALOG	AU	MB	\$3.00
598	1992	OTHER	MIKES RARE COIN ERROR CATALOG #3 38 PAGES	AU+	MB	\$3.00
599	1988	OTHER	CATALOG "THE ERROR CONNECTION" PAUL D'ARCY 14 PAGE CATALOG	AU	MB	\$2.00
600	1988	OTHER	SPRING CATALOG AS PREVIOUS LOT 15 PAGES	AU	MB	\$2.00
601	1979	OTHER	CATALOG "CALIFORNIA DREAMIN" JIM LAYMANS 58 PAGE ILLUSTRATED ERRORS	AU	MB	\$3.50
602	N.D.	OTHER	CAT #31, RICARDO S MARTINEZ 14 PAGE LIST	AU	MB	\$1.50
603	1974	OTHER	RICK & RICK CATALOG OF ERRORS 22 PAGES	AU	MB	\$2.75
604	1987	OTHER	BILL FIVAZ'S JOJA JEMZ ERROR CATALOG DECEMBER 48 PAGES ILLUSTRATED	AU	MB	\$3.75
605	1988	OTHER	JOJA JENZ MARCH, 67 PAGES ILLUSTRATED	AU	MB	\$3.75
606	1978	OTHER	ERRORSCOPE NECA CLUB BULLETIN, 48 PAGES	AU	MB	\$2.50
607	1979	OTHER	ERRORSCOPE JULY/AUG 74 PAGES NEAT OLDIES	AU	MB	\$2.50
608	N.D.	OTHER	NEIL OSINIAS A-VARIETY COIN CENTER ILLUSTRATED CATOLOG 20 PAGE 3RD LIST	AU	MB	\$2.50

609	1984	OTHER SILVER DOLLAR COIN CO. 12 PAGE CATALOG OF ERRORS JEFF NOE	AU	MB	\$1.50
610	N.D.	OTHER JEFF NOE'S CATALOG APROX 28 PAGES ILLUSTRATED	AU	MB	\$2.50
611	N.D.	OTHER 9 PAGE PHAMPLET OF LISTED ERRORS BY CLARENCE IZUO	AU	MB	\$1.50
612	N.D.	OTHER THE ERROR COLLECTORS HAND BOOK BY ARNIE MARGOLIS 48 PAGES	AU	MB	\$2.50
613	N.D.	OTHER JEFF'S ERROR SUPERMARKET CATALOG 25 PAGES ILLUSTRATED	EF	MB	\$3.00
614	N.D.	OTHER THE ILLUSTRATED ERROR COIN PRICING GUIDE VOL 2 NO. 6. ON DIE MAKING PROCESS	AU	MB	\$2.50
615	1978	OTHER INDY ERRORS 5 PAGES BY MIKE JONES	AU	MB	\$2.00
616	1978	OTHER ERROR-VARIETY NEWS 19 PAGES	AU	MB	\$2.50
617	1979	OTHER ERROR-VARIETY NEWS 23 PAGES	AU	MB	\$2.50
618	1980	OTHER ERROR-VARIETY NEWS 23 PAGES	AU	MB	\$2.50
619	ASST	OTHER C.O.N.E.C.A. AUCTION CATALOGS NUMERS 58 THRU 76 LESS 74 18 CATALOGS	AU	MB	\$19.50
620	1973	OTHER ERROR TRENDS COIN MAGAZINE (E.T.C.M) NOVEMBER ISSUE	AU	MB	\$1.50
621	1975	OTHER E.T.C.M, AUGUST ISSUE	AU	MB	\$1.50
622	1978	OTHER E.T.C.M, AUGUST ISSUE	AU	MB	\$1.50
623	1979	OTHER E.T.C.M, JUNE ISSUE	AU	MB	\$1.00
624	1980	OTHER E.T.C.M, AUGUST ISSUE	AU	MB	\$1.00
625	1982	OTHER E.T.C.M, JULY ISSUE	AU	MB	\$1.00
626	1983	OTHER E.T.C. M, APR, AUG, SEPT, DEC 4 ISSUES	AU	MB	\$4.00
627	1985	OTHER E.T.C.M, MAY ISSUE	AU	MB	\$1.00
628	1986	OTHER E.T.C.M, AUGUST & OCTOBER ISSUES	AU	MB	\$2.00
629	1987	OTHER E.T.C.M, FEBRUARY ISSUE	AU	MB	\$1.00
630	1988	OTHER E.T.C.M, MARCH ISSUE	AU	MB	\$1.00
631	1989	OTHER E.T.C.M, COMPLETE YEAR SET LESS JAN & FEB 10 ISSUES	AU	MB	\$10.00
632	1990	OTHER E.T.C.M, COMPLETE YEAR SET LESS AUG & OCT	AU	MB	\$10.00
633	1990	OTHER E.T.C.M, JAN, FEB, MAY & JUNE 4 ISSUES	AU	MB	\$4.00
634	1991	OTHER E.T.C.M, COMPLETE LESS APR, JULY,NOV & DEC 8 PSSUES	AU	MB	\$8.00
635	1992	OTHER E.T.C.M, DECEMBER ONLY	AU	MB	\$1.00
636	1993	OTHER E.T.C.M, JUNE & OCTOBER 2 ISSUES	AU	MB	\$2.00
637	1994	OTHER E.T.C.M, COMPLETE 12 ISSUES	AU	MB	\$12.00
638	1986	OTHER E.T.C.M, COMPLETE YEAR LESS FEBRUARY	AU	MB	\$11.00
639	1996	OTHER E.T.C.M, COMPLETE YEAR 12 ISSUES	AU	MB	\$12.00
640	1997	OTHER E.T.C.M. COMPLETE 12 ISSUES	AU	MB	\$12.00
641	1997	OTHER E.T.C.M, COMPLETE EXCEPT FEB APR & JUNE 9 ISSUES	AU	MB	\$9.00
642	1998	OTHER E.T.C.M, COMPLETE YEAR 12 ISSUES	AU	MB	\$12.00
643	1998	OTHER E.T.C.M, COMPLETE EXCEPT JUNE & MARCH COVER DAMAGED	AU	MB	\$9.00
644	1999	OTHER E.T.C.M, COMPLETE LESS APRIL	AU	MB	\$11.00
645	2000	OTHER E.T.C.M, COMPLETE LESS MAY & SEPT	AU	MB	\$10.00
646	2001	OTHER E.T.C.M, COMPLETE LESS FEB & MAY	AU	MB	\$10.00
647	2001	OTHER E.T.C.M, JANUARY ONLY	AU	MB	\$1.00

THANK YOU!

PRICES REALIZED SALE 47

4	\$980.00	100	\$2.00	238	\$6.00	344	\$20.00
5	\$650.00	102	\$12.50	242	\$3.25	346	\$925.00
7	\$1,350.00	103	\$12.50	T 245	\$5.50	R 349	\$3.85 R
8	\$150.00	109	\$18.50	247	\$3.00	359	\$3.30 R
9	\$195.00	113	\$35.20	R 252	\$3.00	361	\$3.00
20	\$185.00	118	\$16.00	T 253	\$3.00	362	\$3.46 R
21	\$377.00	125	\$14.00	259	\$3.00	364	\$4.40 R
23	\$607.20	R 129	\$3.00	260	\$3.00	365	\$45.00
24	\$18.70	R 130	\$19.00	271	\$3.00	367	\$15.00
26	\$185.00	133	\$20.89	275	\$3.00	368	\$33.05
27	\$12.00	134	\$20.89	277	\$3.00	370	\$38.00
30	\$295.00	135	\$20.89	280	\$3.00	372	\$8.85 R
33	\$500.00	T 136	\$32.00	282	\$4.40	R 374	\$33.00 R
34	\$500.00	137	\$3.85	R 283	\$5.50	R 376	\$3.00
35	\$550.00	145	\$180.00	284	\$37.50	377	\$2.41 R
36	\$650.00	159	\$2.19	286	\$45.00	378	\$10.75 R
37	\$195.00	162	\$2.00	287	\$39.00	379	\$94.60 R
49	\$199.00	163	\$3.30	R 288	\$35.00	380	\$3.58 R
50	\$2,300.00	170	\$0.30	289	\$1.84	R 381	\$77.00 R
51	\$264.00	R 171	\$5.00	290	\$1.29	R 382	\$7.00
53	\$42.00	172	\$4.40	R 291	\$1.62	R 383	\$20.00
54	\$105.00	173	\$2.20	R 292	\$4.95	R 384	\$75.00
55	\$230.00	174	\$2.75	R 293	\$1.40	R 385	\$3.30 R
56	\$190.00	176	\$119.00	294	\$1.28	F 386	\$5.50 R
57	\$45.00	178	\$0.25	295	\$1.00	387	\$16.50 R
58	\$119.00	179	\$0.55	R 296	\$2.32	388	\$6.48 R
59	\$85.00	181	\$25.00	297	\$1.00	389	\$6.00
60	\$72.00	182	\$0.55	R 298	\$2.71	390	\$13.56 R
61	\$195.00	183	\$3.00	299	\$2.20	391	\$11.00 R
62	\$65.00	184	\$27.50	R 300	\$1.10	392	\$8.80 R
63	\$38.00	187	\$0.50	301	\$1.51	393	\$24.20 R
64	\$118.80	R 188	\$0.82	R 302	\$1.31	394	\$11.00 T
65	\$560.00	189	\$0.82	R 304	\$27.77	395	\$13.20 R
66	\$85.00	199	\$16.50	R 305	\$35.00	396	\$11.00
67	\$16.00	200	\$8.80	R 306	\$27.24	398	\$4.00
68	\$45.00	201	\$6.00	309	\$20.78	399	\$7.70 R
69	\$22.00	203	\$12.00	310	\$25.30	400	\$13.20 R
70	\$100.00	204	\$16.50	R 312	\$17.88	401	\$9.35 R
71	\$50.00	205	\$7.00	313	\$20.41	402	\$11.00 R
72	\$30.00	206	\$5.50	314	\$15.00	403	\$20.00
78	\$43.00	207	\$4.00	315	\$16.50	404	\$4.40 R
81	\$20.00	T 208	\$4.00	316	\$15.00	405	\$6.00
82	\$20.00	T 209	\$4.00	317	\$1.65		
86	\$22.00	210	\$3.50	318	\$2.75	R	
88	\$60.00	211	\$5.36	319	\$6.05	R	
92	\$6.35	213	\$4.37	R 322	\$1.00		
94	\$58.96	214	\$4.00	328	\$1.00		
95	\$30.89	219	\$4.00	334	\$12.00		
96	\$49.50	R 222	\$4.00	337	\$82.50	R	
97	\$56.96	223	\$3.75	338	\$75.00		
98	\$5.25	230	\$3.00	341	\$275.00		
99	\$9.90	R 234	\$6.00	342	\$40.00	T	
		235	\$4.00	343	\$104.50	R	

THAT'S IT FOR THIS SALE. THANKS TO ALL THAT JOINED IN ON THIS ONE.
 R = PRICE REDUCED FROM BID. T = THE BIDS RECEIVED FIRST POST MARK WINS.
 UNSOLD LOTS MAY BE PURCHASED FOR MINIMUM BID OR EST PRICE WITHIN NEXT 2 WEEKS.
 THANKS AGAIN TO ALL OF YOU. - LEN ROOMSMAN



44



17

JIM'S CBS



36



12



37



6