

JIM'S CBS

Hilldale Shopping Center
702 N. Midvale Blvd. B-2
Madison, WI 53705
(608) 233-2118

www.jimscoins.net



10. Dramatic dbl strk + missing edge lettering + "one year type!"

NO. 45

FIRST CLASS

MAIL BID SALE #J-45

CLOSES May 30, 2011

- 1) SEND ALL BIDS TO: JIM'S COINS, 702 N. MIDVALE BLVD. B-2, MADISON, WI 53705, OR FAX #608-233-0175, OR PHONE 608-233-2118, OR EMAIL: jimcoins@sbcglobal.net
- 2) THE HIGHEST BIDDER ACKNOWLEDGED BY THE AUCTIONEER SHALL BE THE BUYER. THE AUCTIONEER RESERVES THE RIGHT TO REJECT ANY BID OR WITHDRAW ANY LOT FROM THE SALE. BIDDERS ARE RESPONSIBLE FOR THEIR OWN ERRORS, SO DOUBLE CHECK YOUR BIDS. THE FIRST POSTMARK WINS IN CASE OF A TIE BID.
- 3) ALL SALES ARE FOR CASH AND ARE PAYABLE IMMEDIATELY UPON RECEIPT OF THE INVOICE.
- 4) AUCTIONS ARE OPEN TO ALL AND NO DEPOSIT IS REQUIRED OR DESIRED.
- 5) NO UNLIMITED BIDS ARE ACCEPTED. WINNING BIDDERS WILL BE AWARDED LOT AT A 10% ADVANCE OVER THE SECOND HIGHEST BID. IF NO OTHER BIDS ARE RECEIVED FOR A LOT, THE BIDDER WILL BE AWARDED THE LOT AT THE MINIMUM BID, OR ESTIMATE IF NO MINIMUM IS GIVEN.
- 6) ALL ITEMS ARE GUARANTEED GENUINE. BIDDERS MAY RETURN ANY ITEM NOT AS DESCRIBED.
- 7) A \$1 HANDLING CHARGE WILL BE ADDED TO ALL WINNING INVOICES. BID EARLY AND BID OFTEN. THANKS! - LEN & JIM

1	1999	\$5	AMERICAN EAGLE 1/10 OZ GOLD ITH CURVED CLIP AT 6:30 NGC	MS69	MB	\$225.00
2	1884 O	DOLL	SO CALLED O OVER CC VAM 10 ANACS	MS63	MB	\$200.00
3	1887	DOLL	"ALLIGATOR EYE" VAM 12A ANACS	MS64	MB	\$99.00
4	(2007)	DOLL	G. WASHINGTON WITH MISSING EDGE LETTERING PCGS	MS64	MB	\$49.00
5	(2007)	DOLL	G. WASHINGTON WITH MISSING EDGE LETTERING PCGS	MS66	MB	\$125.00
6	2007 P	DOLL	G. WASHINGTON WEAK EDGE LETTERS POS. B SATIN FINISH PCGS	MS66	MB	\$99.00
7	2007 D	DOLL	G. WASHINGTON WEAK EDGE LETTERING POSITION B PCGS	MS64	MB	\$22.00
8	2007 P	DOLL	J. ADAMS OBVERSE DIE GOUGE NGC	MS67	MB	\$39.00
*	9	2007 S	DOLL T. JEFFERSON DOUBLE STRUCK WITH ROTATION BEST SEEN ON OBV LETTERING BACK OF HEAD, REV LIBERTY'S ARM SUPER NGC	PR69	MB	\$730.00
*	10	(2009)	DOLL NATIVE AMERICAN VERY DRAMATIC DOUBLE STRIKE AND MISSING EDGE LETTERING 1 YEAR TYPE PCGS	MS64	MB	\$2,400.00
11	1964	HALF	5% CURVED CLIP 10:30 NICE BLAKESLY EFFECT NGC	MS61	MB	\$25.00
*	12	1968 D	HALF 50% INDENT 4:00 (LOOKS LIKE THRU A CLAD LAYER) ANACS	AU50	MB	\$230.00
*	13	1981 D	HALF HUGE BROADSTRIKE WITH 90% INDENT 11:30 WOWSER LARGER THAN A DOLLAR PCGS	MS60	MB	\$1,150.00
14	1965	HALF	SPECIAL MINT SET WITH DOUBLED DIE OBVERSE- 005 DMR-7 ANACS	MS66	MB	\$18.00
15	1968 S	HALF	DOUBLED DIE OBVERSE ANACS	PR66	MB	\$23.00
16	1969 S	HALF	DOUBLED DIE OBVERSE & REVERSE ANACS	PF65	MB	\$25.00
17	1971 D	HALF	DOUBLED DIE OBVERSE ANACS	MS65	MB	\$32.00
18	1982 P	QUAR	STRUCK ON NICKEL PLANCHET PCGS	AU58	MB	\$199.00
*	19	1982 S	QUAR OBVERSE WITH HEAVY CUSTARD-PIE-LIKE STRUCK THRU NGC	PF68	MB	\$795.00
20	1961 D	QUAR	D OVER D RPM RPM-2 ANACS	MS64	MB	\$18.00

21	2000	QUAR	N.H. 55% OFF CENTER 4:00 NGC	MS65	MB	\$232.00
22	2005 P	QUAR	W.V. REVERSE DIE BREAK (CUD) 4:00 REVESE NGC	MS66	MB	\$29.00
23	1959 D	DIME	D OVER INVERTED D FS #511 FINEST KNOWN PCGS	MS66	MB	\$125.00
24	N.D.	NICK	TYPE 1 ELLIPTICAL CLIP BLANK 4.6 GRAMS NEW ENGLAND COLLECTION NGC	UNC	MB	\$150.00
25	2004 P	NICK	PEACE MEDAL TYPE WITH DOUBLED DIE OBVERSE PCGS	MS64	MB	\$99.00
26	1952	NICK	5% OFF CENTER ON A DIME PLANCHET 2.5 GRAMS NGC	AU53	MB	\$625.00
27	1964	NICK	STRUCK ON CENT PLANCHET 3.08 GRAM NGC BROWN	AU68	MB	\$235.00
28	1964 D	NICK	STRUCK ON A CENT PLANCHET BLUE & VIOLET TONED PCGS RB	MS63	MB	\$340.00
29	1977	NICK	STRUCK ON CENT PLANCHET MOSTLY RED RB	PCGS MS64	MB	\$350.00
30	1980 P	NICK	STRUCK ON CENT PLANCHET 3.06 GRAMS NGC BN	MS64	MB	\$270.00
31	(1945)	NICK	STRUCK ON A NETHERLANDS E.I. 25c PLANCHET SILVER-DIME-SIZED RAINBOW TONING NGC	AU50	MB	\$850.00
*	32 1981 P	NICK	50% CURVED CLIP 2:00 + 5% CLIP 10:30 PCGS	MS63	MB	\$125.00
*	33 198(4)	NICK	OBVERSE DIE CAP LARGE WITH PLAN SPLIT 4:00 NGC	MS64	MB	\$740.00
*	34 1995 P	NICK	HUGE BROADSTRIKE LARGER THAN 25c 6 FULL STEPS NGC	MS64	MB	\$45.00
35	1969 S	NICK	20% OFF CENTER + FULL STEPS? 10:30 NGC	MS66	MB	\$450.00
*	36 1977	NICK	DOUBLE STRUCK, 2ND 60% OFF CENTER 2:30 UNIFACE REVERSE NEAT PLACEMENT PCGS	AU58	MB	\$165.00
37	N.D.	NICK	DOUBLE STRUCK, 30% O/C 5:00 DSBS, + 90% OFF CENTER 10:00 UNIFACE NGC FULL STEPS	MS64	MB	\$125.00
38	1999 P	NICK	BROADSTRUCK, WITH OBVERSE INDENT 10:30 NGC FULL STEPS	MS66	MB	\$39.00
*	39 1945 P	NICK	55% INDENTED OBVERSE 8:00 ON WAR NICKLE RARE! PCGS	MS64	MB	\$850.00
*	40 1996 P	NICK	LARGE MULTI-SLAB 2 OFF CENTER 60% MATED PAIR CHAIN STRIKES PERFECT EXAMPLE EX. RARE TO FIND ON NICKEL NGC	MS66	MB	\$850.00
41	1965	CENT	PARTIAL COLLAR WITH 10% INDENT 1:00 ANACS RB	MS64	MB	\$16.00
42	1945 D	CENT	1945/5 D STRONG SHIFTED 5 ACG RED	MS66	MB	\$4.00
43	1970 S	CENT	STRUCK ON CLAD DIME PLANCHET RARE S MINT PCGS	MS61	MB	\$690.00
*	44 1806 BB	OTHER	FRENCH 5 FRANC DOUBLE STRUCK IN COLLAR LARGER THAN SIL \$ PCGS	VF20	MB	\$690.00
*	45 1990	OTHER	POLAND 100 ZOL. DOUBLE STRUCK, 2ND 60% OFF CENTER UNIFACE COIN EXPANDED TO BE TOO BIG TO FIT IN SLAB SILVER PCGS TAG ONLY	MS67	MB	\$450.00
*	46 1972	OTHER	SET OF 3 PHILLIPPINE PISO STRUCK ON U.S. 50 CENT, 5 CENT, & 1 CENT ALL NGC	MS64	MB	\$1,250.00
*	47 1990	\$100	FED RESERVE NOTE (FRN) STRONG FULL FACE OFFSET ON REVERSE PCGS PPQ	EF40	MB	\$360.00
*	48 1986	\$100	F.R.N. VERY WEAK UNDER INKED REVERSE SMALL PENNED 4 OBV	EF	MB	\$199.00
*	49 1977	\$20	F.R.N. FULL MEDIUM OFFSET OBVERSE ON REVERSE	EF	MB	\$165.00
50	1977	\$20	F.R.N. DARK REVERSE OFFSET ON UPPER LEFT OBVERSE CORNER	FN	MB	\$35.00
*	51 1985	\$20	F.R.N. SUPER DARK GREEN INK SMEAR REVERSE 1 3/4" WIDE NEAR CENTER PCGS PPQ	EF40	MB	\$230.00
*	52 1977	\$10	F.R.N. FULL FACE TO BACK OFFSET MEDIUM DARK PCGS PPQ	AU53	MB	\$185.00

53	1985	\$10	F.R.N, SMALL REVERSE GREEN INK SMEAR LEFT CENTER BOTTOM	EF	MB	\$23.00	
*	54	1950 B	\$5	F.R.N, NICE OBV & REV GUTTER + MULTI SMALL GUTTERS	VF	MB	\$43.00
*	55	1977 A	\$5	F.R.N, NEAT WHITE GUTTER CENTER TOP TO BOTTOM	VF	MB	\$38.00
	56	1985	\$5	F.R.N, SMALL GREEN INK SMEAR BOTTOM REVERSE	VF	MB	\$24.00
*	57	1977	\$5	F.R.N, STRONG GREEN INK SMEARS REVERSE NEAR CENTER	FN	MB	\$43.00
*	58	1995	\$5	F.R.N, STRONG GREEN WET INK TRANSFER ACROSS 3/4 TOP OBVERSE HEAVY PMG EPQ	GM66	MB	\$210.00
	59	1985 G	\$5	F.R.N, FULL BACK TO FRONT OFFSET LIGHT PCGS VC64 PPQ	MB		\$125.00
*	60	1975 K	\$5	F.R.N, PRE FACE PRINT FOLD OVER LEFT END NEAAT SEE PHOTO PCGS PPQ	VF30	MB	\$99.00
*	61	1917	\$1	LEGAL TENDER, LARGE SIZE NOTE, GUTTER FOLD NEAR CENTER LEFT END TO 1 INCH IN BOTTOM PMG	VF25	MB	\$435.00
*	62	1935 E	\$1	SILVER CERTIFICATE, 2 SEALS & SEIAL NUMBER PRINTED CROSS WAYS ON REVERSE UNIQUE?? PMG	CF15	MB	\$980.00
*	63	1935 D	\$1	SILV CERT, 30% OBSTRUCTED PRINTING BLUE SEAL PMG EPQ	CU64	MB	\$165.00
*	64	1935 A	\$1	SILV CERT, NICE MULTI GUTTERS TOP TO BOTTOM OBVERSE	VG	MB	\$38.00
*	65	1935 E	\$1	SILV CERT, GUTTER FOLD TOP TO BOTTOM OBVERSE WITH INSPECTORS REJECT RED STICKER RT END	AU	MB	\$135.00
*	66	1935 E	\$1	SILV CERT, WIDE GUTTER FOLD WHITE OBV & REV MID LEFT SIDE	EF+	MB	\$45.00
	67	1988 A	\$1	F.R.N, WOWSER MISMATCHED SERIAL NUMBERS ON A REPLACEMENT STAR NOTE	AU58	MB	\$1,295.00
*	68	1981	\$1	F.R.N, LARGE FOLD OVER CUTTING ERROR AFTER COMPLETE PRINTED PCGS PPQ	GM65	MB	\$750.00
*	69	1981	\$1	F.R.N, LARGE MULTI FOLD ERROR LOW RIGHT CORNER NEAT SEE PHOTO PMG	CU64	MB	\$160.00
*	70	2003 A	\$1	F.R.N, MISALIGNED CUTTING ERROR 3/8 INCH NEXT NOTE ON LEFT END OBV & REV , SER # & SEAL IN RIGHT PLACE PMG EPQ	GM65	MB	\$680.00
*	71	1988 A	\$1	F.R.N, MAJO GREEN INK SMEAR OVER MOST REVERSE	RF	MB	\$85.00
	72	1995	\$1	F.R., FULL LIGHT OFFSET OBVERSE ON OBVERSE	FN	MB	\$89.00
	73	1981	\$1	F.R.N, REVERSE MISALIGNED TO LEFT & UP SO HARLY ANY BORDER	VG	MB	\$16.00
	74	1981	\$1	F.R.N, MINOR MISALIGNMENT OF OBVERSE OVERPRINT PCGS PPQ	CU63	MB	\$23.00
	75	1995	\$10	F.R.N, DARK OBVERSE OFFSET ON REVERSE OVER INKED OBVERSE	VF	MB	\$185.00
	76	1899 O	DOLL	MICRO MINT MARK O VAM-4	VG	MB	\$39.00
	77	1888 O	DOLL	DOUBLED DIE OBVERSE "HOT LIPS"	AG	MB	\$39.00
	78	1921	DOLL	WIDE INFREQUENT REEDING	AU58	MB	\$39.00
	79	1921 S	DOLL	RIM CLIP BELOW 9 IN DATE	EF	MB	\$39.00
	80	2007	DOLL	ADAMS DOUBLE EDGE LETTERING WITH NEAT PLACEMENT OF UPSIDEDOWN DATE RIGHT NEXT TO RIGHT-SIDE-UP DATE	AU	MB	\$65.00
	81	1922 D	DOLL	MULTI DIE CRACKS, PRE CUD OVER Y OBVERSE 2:00	AU	MB	\$45.00
	82	N.D.	DOLL	TYPE 1 IKE PLANCHET	UNC	MB	\$129.00
*	83	1972 S	DOLL	SILVER IKE 1% CLIP 4:30	BU	MB	\$99.00
*	84	1972	DOLL	3% CURVED CLIP 7:00 RAINBOW TONING	BU	MB	\$24.00
*	85	1999 P	DOLL	SUZY STRUCK 40% OFF CENTER 1:00	BU	MB	\$495.00

86	1987	ASE	DIE TRIAL? VERY WEAK IN CENTER	BU	MB	\$48.00
87	N.D.	DOLL	PRESIDENTIAL TYPE 2 PLANCHET	BU	MB	\$79.00
88	N.D.	DOLL	PRESIDENTIAL TYPE 2 PLANCHET PARTIAL CUT & BENT	BU	MB	\$21.00
89	N.D.	DOLL	SAC OR PRES CHOPPED WEBBING, AFTER BLANKS PUNCHED, BOW TIE SHAPE	BU	MB	\$22.00
90	N.D.	DOLL	SAC OR PRES CHOPPED WEB AS ABOVE ONLY T SHAPE	BU	MB	\$15.00
91	N.D.	HALF	TYPE 2 90% SILVER TYPE 2 PLANCHET	UNC	MB	\$60.00
92	N.D.	HALF	CLAD TYPE 2 PLANCHET	UNC	MB	\$60.00
93	1825	HALF	EDGE LETTERING ERROR, READS "ORLF A DOLLAR"	FIN	MB	\$99.00
94	1942 S	HALF	RIM CLIP 11:30	VG	MB	\$22.00
*	95	1971 D	HALF KENNEDY HALF STRUCK 50% OFF CENTER ON 25c-SIZE MEXICO PLANCHET--WOW!	EF	MB	\$650.00
*	96	1974 D	HALF REVERSE STRUCK THRU CENT? PLANCHET, 75% STRUCK THRU 3:00 GHOST EAGLE SUPER NEAT	AU	MB	\$495.00
97	1968 D	HALF	STRUCK THRU REEDING REVERSE 3:00 TO 8:00	AU	MB	\$45.00
98	1973 D	HALF	2 COINS BOTH WITH NICE RIM BURRS ON DATE AREA	BU	MB	\$25.00
99	1966	HALF	STILL IN SPECIAL MINT SET AS ISSUED, DOUBLED DIE OBVERSE 13-O-111, FS 103	BU	MB	\$80.00
100	1964 D	HALF	DOUBLED DIE OBVERSE FS-104	UNC	MB	\$24.00
*	101	1983 P	HALF UNCENTERED BROADSTRUCK SLIGHT PARTIAL COLLAR	BU	MB	\$60.00
102	1983 P	HALF	UNCENTERED BROADSTRIKE NO COLLAR LOOKS 5% OFF CENTER	BU	MB	\$85.00
103	1967	HALF	DISK CLIP 9:00 + STRUCK IN TOP OF HEAD	AU	MB	\$11.00
104	1974	HALF	DISK CLIP 5:00 + 3% CURVED CLIP 10:30	BU	MB	\$12.00
105	N.D.	QUAR	CLAD TYPE 2 PLANCHET	UNC	MB	\$5.00
106	N.D.	QUAR	DOUBLE STRUCK CAP DRAMATIC!! STRANGE METAL SOLDER REVERSE AFTER STRIKE	UNC	MB	\$325.00
*	107	1982 P	QUAR STRUCK ON NICKEL PLANCHET	AU	MB	\$199.00
108	1976	QUAR	10% OFF CENTER 4:00 EX BOWERS AUCTION 1990 STILL IN THEIR HOLDER	UNC	MB	\$65.00
109	1941 S	QUAR	LARGE S, FS-25-1941S-503	VF	MB	\$11.00
110	1956	QUAR	TYPE 2 REVERSE FS-25-1956-901	AU	MB	\$12.00
111	1957	QUAR	TYPE 2 REVERSE (PROOF) FS-25-1957-901	EF	MB	\$7.00
112	1958	QUAR	TYPE 2 PROOF REVERSE FS-25-1958-901	VF	MB	\$7.00
113	1959	QUAR	TYPE 2 PROOF REVERSE FS-25-1959-901	VF	MB	\$7.00
114	1960	QUAR	TYPE 2 PROOF REVERSE FS-25-1960-901	EF	MB	\$7.25
115	1961	QUAR	TYPE 2 PROOF REVERSE FS-25-1961-901	EF	MB	\$7.25
116	1962	QUAR	YPE 2 PROOF REVERSE FS-25-1962-901	AU	MB	\$14.00
117	1963	QUAR	TYPE 2 PROOF REVERSE FS-25-1963-901	AU	MB	\$7.50
118	1964	QUAR	TYPE 2 PROOF REVERSE FS-25-1964-901	AU	MB	\$7.50
*	119	1965	QUAR UNCENTRED BROADSTRIKE	UNC	MB	\$15.00
120	1965	QUAR	RIM CLIP 4:00	AU	MB	\$3.50
121	1974 D	QUAR	5% CURVED CLIP 12:00	VF	MB	\$3.75
122	ASST	QUAR	LOT 17 COINS IN 2x2 HOLDERS WITH DIE CRACKS	AU	MB	\$7.00
123	1999 P	QUAR	DE, LARGE HEAVY STRUCK THRU CENTER REVERSE	UNC	MB	\$16.00
124	1999 P	QUAR	GA, WITH UNUSUAL HEAVY DIE POLISH LINES OBV & REV	BU	MB	\$2.50
*	125	1999 P	QUAR CT, UNCENTERED BROADSTRIKE WITH SLIGHT PARTIAL COLLAR	BU	MB	\$19.00
*	126	1999 P	QUAR CT, DOUBLE STRUCK , 2ND 75% OFF CENTER 4:00 DIE STRUCK BOTH SIDES	BU	MB	\$349.00
*	127	1999 P	QUAR NJ, DOUBLE STRUCK, 2ND 70% OFF CENTER 6:30 UNIFACE REVERSE	BU	MB	\$349.00
128	1999 P	QUAR	GA, UNCENTERED BROADSTRUCK EDGE DING	BU	MB	\$15.00

6:00 LOOKS OFF CENTER

129	2000 P	QUAR	SC, UNCENTERED BROADSTRIKE	BU	MB	\$24.50	
130	2002 P	QUAR	IN, BROADSTRUCK WITH SLIGHT TILT PARTIAL COLLAR	BU	MB	\$14.00	
*	131	2003 P	QUAR	IL. UNCNTERED BROADSTRIKE WITH SLIGHT PARTIAL COLLAR	BU	MB	\$19.00
132	2003 P	QUAR	AL, STRUCK WITH LEVEL PARTIAL COLLAR	UNC	MB	\$16.00	
*	133	2005 D	QUAR	KS, STRUCK ON ELLIPTICAL CLIPPED PLANCHET, 21mm WIDE SHOULD BE 24.3mm WOWER FOOTBALL SHAPE	CHBU	MB	\$310.00
134	2007 D	QUAR	ID, NO "DE" DESIGNERS INTIAL ON EAGLE + REGULAR COIN	BU	MB	\$3.50	
135	2007 P	QUAR	WY, OBERSE & REVERSE STRUCK THRU LIKE MOVING HORSE & RIDER	BU	MB	\$3.50	
136	2008 P	QUAR	HI, STRONG DIE POLISH LINES LIKE FLYING KING	BU	MB	\$3.50	
*	137	(1999)	QUAR	PA, 85% OFF CENTER 11:00 SHOWS "PENNSY" ON REVERSE DSBS NEAT	BU	MB	\$90.00
138	2009 P	QUAR	DC, "EXTRA KEY" WDDR-007, EXTRA PIANO KEYS	BU	MB	\$24.00	
139	N.D.	DIME	CLAD TYPE 2 PLANCHET	UNC	MB	\$3.00	
140	1940 S	DIME	HEAVY DIE POLISH MISSING BRIDGE OF NOSE	BU	MB	\$16.00	
141	1938 D	DIME	RPM #1	VG+	MB	\$5.00	
142	1940 D	DIME	RPM #1	VF	MB	\$6.00	
143	1945 D	DIME	D OVER HORIZ D FS-10-1945D-506	VFEF	MB	\$225.00	
144	1951 S	DIME	RPM #2	FIN	MB	\$6.50	
145	1958 D	DIME	RPM #1	AU	MB	\$6.50	
146	1964 D	DIME	RPM #2	BU	MB	\$10.00	
147	N.D.	DIME	OBERSE MIRROR BROCKAGE + SUPER STRONG CLASHED DIE REVERSE	BU	MB	\$225.00	
148	1940 S	DIME	RIM CUD 4:00 REVERSE	GEM	MB	\$22.00	
*	149	1964 D	DIME	LARGE CUD TOP OF HEAD RDC-64DD-1B	AU	MB	\$59.00
*	150	1973	DIME	50% OFF CENTER 1:30 SPOT REV	BU	MB	\$29.00
*	151	1981 P	DIME	50% OFF CENTER 12:30	BU	MB	\$28.00
152	N.D.	DIME	85% OFF CENTER 1:30 DSBS (DIE STRUCK BOTH SIDES)	UNC	MB	\$14.00	
153	N.D.	DIME	SILVER, 90% OFF CENTER DIE STRUCK BOTH SIDES	EF	MB	\$69.00	
154	1956	DIME	5% CURVED CLIP 4:00	VF	MB	\$3.50	
155	1957 D	DIME	RIM CLIP 7:00	VF	MB	\$3.50	
*	156	19561D	DIME	5% CURVED CLIP 4:00	AU	MB	\$3.50
*	157	1964 D	DIME	5% CURVED CLIP 1:30 + 5% CURVED CLIP[4:00	UNC	MB	\$11.00
158	1966	DIME	4% CURVED CLIP 5:30	BU	MB	\$3.50	
159	1979	DIME	4% CURVED CLIP 7:00	BU	MB	\$2.50	
160	2004	DIME	3% CURVED CLIP 7:00 VERY SCARCE DATE	CHBU	MB	\$36.00	
161	1985 D	DIME	WEAK STRIKE 2:00 TO 9:00 AROUND RIM	BU	MB	\$4.00	
162	1970 D	DIME	VERY WEAK STRIKE OBV & REV TRIAL??	UNC	MB	\$35.00	
163	1985 P	DIME	HIGH THICK RIMS	UNC	MB	\$2.50	
164	1985 P	DIME	MISALIGNED DIE THICK RIMS	BU	MB	\$3.50	
*	165	1999 P	DIME	UNCENTERED BROADSTRIKE + DIE CRACK ON NOSE, + REEDED EDGE MULTI STRIKE	BU	MB	\$26.00
166	1964 D	DIME	POINTED 9 VARIETY	AU	MB	\$3.50	
168	1985 D	DIME	FLAT RIM OBERSE 11:00 TO 5:00-	UNC	MB	\$1.50	
169	199(4)D	DIME	VERY LOW PRESSURE STRIKE PAIR OF COINS	BU	MB	\$110.00	
170	ASST	DIME	13 CLAD DIMES IN 2x2 WITH DIE CRACKS & MISALIGNED DIES	ASST	MB	\$3.00	
171	ASST	DIME	12 CLAD DIMES IN 2x2'S MISALIGNED & DIE CRACKS	ASST	MB	\$3.00	
172	ASST	DIME	ROLL 35 CLAD DIMES AS RECEIVED SAYS DIE CHIPS & DIE CRACKS ON HEAD & FACE	ASST	MB	\$6.00	
173	1906	NICK	LAMINATION 2:00 TO 4:00 IN FIELD	EF	MB	\$15.00	

173	1883NC	NICK	DISK CLIP 10:00 + DIE CRACKS AT DATE & 7:30 TO STAR TO BUST	EF	MB	\$23.00	
174	1908	NICK	LARGE DIE CHIP BOTTOM OF NECK	VG	MB	\$3.00	
175	1915 D	NICK	ACID TREATED DATE WITH REVERSE LAMINATIONS GOOD DATE	AG	MB	\$4.00	
176	1918	NICK	OBVERSE & REVERSE LAMINATIONS	VG	MB	\$4.50	
177	1918 S	NICK	REVERSE LAMINATIONS	GD	MB	\$10.00	
178	1918 S	NICK	REVERSE LAMINATIONS 12:00 TO 3:30	GD	MB	\$10.00	
179	1920	NICK	LAMINATION OBVERSE 9:30 TO MID HEAD	GD	MB	\$2.00	
180	1920 S	NICK	OBVERSE LAMINATION	GD	MB	\$3.00	
181	1930 S	NICK	SMALL LAMINATION OBV & REV	FN	MB	\$2.00	
182	1935	NICK	CURVED RIM CLIP 8:00	GD	MB	\$7.00	
183	1937 S	NICK	MINOR REVERSE LAMINATION	FN	MB	\$1.50	
184	1931 S	NICK	RPM #1	FN	MB	\$22.00	
185	1935	NICK	DOUBLED DIE REVERSE DDR-1-R-V FS-05-018	FN	MB	\$90.00	
186	1936 S	NICK	RPM #1 FS-05-1936S-501	VG	MB	\$12.50	
187	1937 D	NICK	RPM #1	FN	MB	\$4.75	
188	1937 S	NICK	RPM #2	FN+	MB	\$6.50	
189	1938 D	NICK	RPM #1 FS-05-1938D-501	EF	MB	\$10.00	
190	1938 D	NICK	RPM #2	FN+	MB	\$5.50	
191	1958 D	NICK	RPM #1	VF	MB	\$4.50	
192	1942 D	NICK	RPM #1 D OVER HORIZONTAL D FS-05-1942D-501	FN	MB	\$55.00	
*	193	1980 P	NICK	STRUCK ON CENT PLANCHET	AU	MB	\$199.00
*	194	N.D.	NICK	STRUCK ON CLAD DIME PLANCHET	AU	MB	\$252.00
195	1970 D	NICK	1/2 INCH HIGH VERY DEEP CAP SUPER EARLY DATE	BU	MB	\$1,450.00	
196	N.D.	NICK	WITHDRAWN *****	AG	MB	\$1,000.0	
197	1940 S	NICK	FILLED DIE STRIKE	GD	MB	\$0.50	
198	1941 S	NICK	LARGE S	FN	MB	\$2.00	
199	1998 P	NICK	FILLED DIES DETAILS BOTH SIDES EXTREMELY WEAK	EF	MB	\$1.00	
200	1964	NICK	PARTIAL COLLAR WITH HIGH WIRE RIM REV & CUPPED UP OBVERSE	BU	MB	\$15.00	
201	1964	NICK	WDDR=05, DOUBLED EPU, USA, FIVE, & MO	PRF	MB	\$20.00	
202	1940	NICK	RIM CLIP 2:30	VF	MB	\$2.00	
203	1943 P	NICK	RIM CLIP 6:30	EF	MB	\$3.50	
204	1944 D	NICK	2% CURVED CLIP 2:00	GD	MB	\$2.50	
205	1945 P	NICK	3% CURVED CLIP 1:00	FN	MB	\$3.50	
206	1945 S	NICK	RIM CLIP 6:00 WITH NICE BLAKESLY EFFECT	FN	MB	\$3.50	
207	1947	NICK	3% CURVED CLIP 7:30 SCRATCH REVERSE	FN	MB	\$2.50	
208	1954 S	NICK	3% CURVED CLIP 10:30	VF	MB	\$3.50	
209	1956	NICK	RIM CLIP 3:00	VF	MB	\$0.95	
210	1960	NICK	2% CURVED CLIP 11:30 + RIM CLIP 6:30	EF	MB	\$1.50	
211	1960	NICK	RIM CLIP 6:00	VF	MB	\$2.00	
212	1960	NICK	3% CURVED CLIP 8:30	AU	MB	\$2.50	
*	213	1964 D	NICK	STRAIGHT CLIP 9:30 TO 12:00	EF	MB	\$4.00
214	1964 D	NICK	LOT OF 4 COINS WITH 2 CLIPS EACH	AU	MB	\$5.50	
215	1968 S	NICK	LOT OF 3 COINS 5% CURVED CLIPS	BU	MB	\$4.50	
216	1974	NICK	2% CURVED CLIP 11:30	AU	MB	\$2.50	
217	(1988P)	NICK	7% CURVED CLIP 4:00 EX WORN DIE REV	AU	MB	\$3.50	
218	1940	NICK	LAMINATION OBVERSE 4:00 TO 10:00	FN	MB	\$1.50	
219	1943 P	NICK	LAMINATION 35% REV 5:30 TO 10:00	VG	MB	\$8.00	
220	1945 P	NICK	LAMINATIONS 8:30 TO 10:00 REVERSE	FN	MB	\$2.50	
221	1944 P	NICK	MULTI LAMINATIONS 6:00 TO 12:00	FN	MB	\$2.50	
222	1945 P	NICK	LAMINATION REVERSE 10:00 TO 2:00	FN	MB	\$2.50	



9



9



19



195



195



32



45



33



34



44



37



39



46



46



46



48



47



49



54



55



51



52



58



60



57



68



70



62



63



61



69



64



65



66



71



805



83



84



85



95



96



101



532

SUBSCRIPTION FOR THE YEAR 2011
DON'T MISS ANY OF THESE SALES!

SEMI-MONTHLY ERROR CATALOGS PUBLISHED FOR THE PAST 24 YEARS!

THE SUBSCRIPTION PRICE IS \$8.00 FOR SIX CATALOGS ON A SEMI-MONTHLY BASIS. COST OF PRINTING AND MAILING THE LAST CATALOG WAS \$2.06 EACH. WE DON'T MIND SENDING CATALOGS TO COLLECTORS OF CATALOGS IF YOU SHARE IN THE COST OF THE CATALOGS.

WE WILL AUTOMATICALLY BILL \$8.00 SUBSCRIPTION DUES TO ALL WINNING BIDERS WHO HAVE NOT YET PAID UNLESS OTHERWISE PAID OR INFORMED.

WE HAVE A FULL SERVICE COIN & STAMP STORE THAT IS LOCATED IN HILLDALE MALL IN MADISON, WI. PLEASE FEEL FREE TO STOP BY IF YOU ARE IN TOWN.

WE ARE ALSO ENTHUSIASTIC BUYERS OF ALL ERRORS AS WELL AS NORMAL COINS, STAMPS AND COLLECTIBLE RED/BLUE BOOKS!

PLEASE VISIT OUR WEB SITE AT www.Jimscoins.com MANY OF THE PHOTOS IN THE WEB SITE VERSION ARE *FULL COLOR*.

NEW PROGRAM: FREE CONECA MEMBERSHIP UPON REQUEST FOR NEW MEMBERS WITH WINNING BIDS TALLING \$50 OR MORE.

CONSIGNORS: GETTING TOUGHER TO FIND ERRORS TO FILL THE AUCTIONS. IF YOU HAVE SOME TO SELL OR CONSIGN, PLEASE LET US KNOW. TERMS ARE 15% COMMISSION, YOU SET THE MINIMUM BID AND NO CHARGE IF THE COIN DOES NOT SELL. ALSO BID GENEROUSLY SO WE CAN AFFORD TO BUY SOME MORE. HEH-HEH. -LEN & JIM

NOTES FOR J-45: Spring is finally here after some April snowstorms (!?) While gold and silver are going up and down like a yo-yo, error coins are steadily becoming harder and harder to find, plus they are fun to own! Get your bids in while they are still affordable! -LEN & JIM

NAME _____

ADDRESS _____

CITY _____ STATE _____ ZIP _____

PHONE (OPTIONAL) _____

YOUR ADDRESS LABEL HAS A YEAR ON IT SO YOU WILL KNOW WHEN YOUR SUBSCRIPTION EXPIRES.

THANKS AGAIN TO ALL OF YOU! -LEN & JIM

Become a CONECA Member

The Combined Organizations of Numismatic Error Collectors of America

Not yet a member of the world's greatest coin club ?
It's as easy as 1-2-3 to join !

Step 1 — Your Info

Your Name:
Your Mailing Address:
Your Email Address:
Your Phone number:
Username:
Password:
Username and Password will provide you access to CONECA 'members only' area. (Your information will NOT be provided to others).
Recommended by: James Essence Jim's Coins

Step 2 — Your Choices

Dues ONE year	
Adult member	\$ 25.00
Young member (under 18)	\$ 7.50
Mailing Options	
U.S. Bulk Rate	\$ 0.00
First Class or Foreign	\$ 12.50
Total payable to CONECA	

Dues TWO years	
Adult member	\$ 50.00
Young member (under 18)	\$ 15.00
Mailing Options	
U.S. Bulk Rate	\$ 0.00
First Class or Foreign	\$ 25.00
Total payable to CONECA	

Step 3 — Mail in Payment

Send your check or money order payable to CONECA:

Rachel Irish
101 W. Prairie Center #323
Hayden, ID 83835

MRIrish5@roadrunner.com

Your membership is subject to approval by the Membership Committee and subject to the rules and regulations set forth in the CONECA Constitution and By-Laws.





107



119



125



126



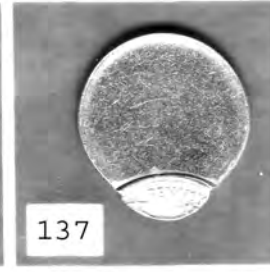
127



131



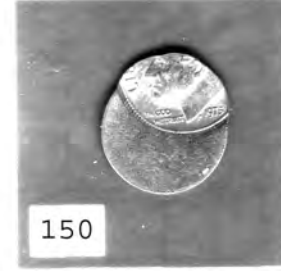
133



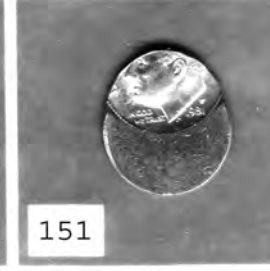
137



149



150



151



156



157



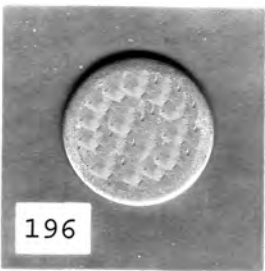
165



193



194



196



213



229



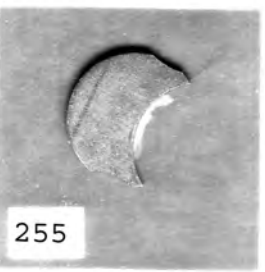
230



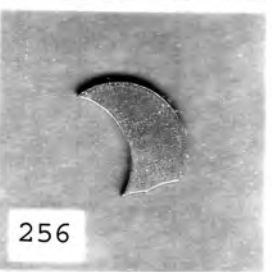
231



250



255



256



260



263



266



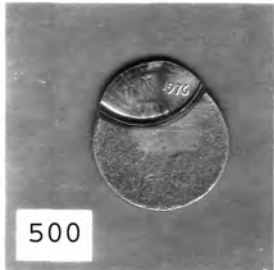
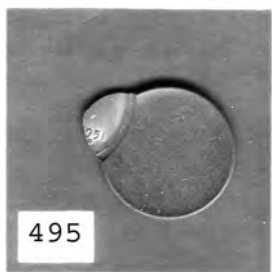
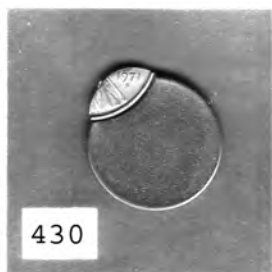
269



410



420



223	1945 P	NICK	LAMINATIONS OBERSE	VF	MB	\$2.50	
224	1945 P	NICK	3% CURVED CLIP 8:00 + LAMINATION OUT 10:30	FN	MB	\$3.50	
225	1950 P	NICK	LAMINATION FLAP REVERSE AT 1:00	VF	MB	\$2.00	
226	1954 S	NICK	LAMINATION ACROSS BUILDING 10:00 TO 1:00	BU	MB	\$2.50	
227	1958 D	NICK	LAMINATION REVERSE 4:00 TO 10:30	FN	MB	\$0.50	
*	229	1973	NICK	80% OFF CENTER 9:00	BU	MB	\$38.00
*	230	1974	NICK	70% OFF CENTER 10:00	BU	MB	\$45.00
*	231	1975	NICK	40% OFF CENTER 12:00 MINOR COUNTER BURN	UNC	MB	\$35.00
232	1975 D	NICK	55% OFF CENTER 10:30	BU	MB	\$45.00	
233	1977	NICK	40% OFF CENTER 12:00	BU	MB	\$28.00	
234	X991 P	NICK	75% OFF CENTER 11:00 DSBS	BU	MB	\$22.00	
235	N.D.	NICK	75% OFF CENTER 2:00	BU	MB	\$3.50	
236	N.D.	NICK	80% OFF CENTER 2:00	UNC	MB	\$3.00	
237	N.D.	NICK	80% OFF CENTER 7:30 DSBS	UNC	MB	\$3.50	
238	N.D.	NICK	40% OFF CENTER 2:30 NEAT STRETCHED LETTERING FROM 1960'S	BU	MB	\$22.00	
239	N.D.	NICK	80% OFF CENTER 1:30 MINT EDGE BUMP POSSIBLE PROOF PLANCHET	BU	MB	\$19.00	
240	ASST	NICK	LOT OF 3 COINS WITH DIE CRACKS IN 2x2'S	UNC	MB	\$0.50	
241	1866	NIK3c	LARGE ALIGATOR DIE BREAK ON FIRST PILLAR REVERSE	VG	MB	\$15.00	
242	1866	NIK3c	HEAVY LAMINATION 9:00 OBERSE	AU	MB	\$29.00	
243	ASST	OTHER	20 ASST VARIETIES 6 CENTS, 7 NICKELS, 1 QUARTER 6 CENTS OFF CENTER 40%+	ASST	MB	\$15.00	
244	1881	NIK3c	RIM CLIP 8:30	EF	MB	\$35.00	
245	1797	CENT	DOUBLE STRUCK, 2ND 1797/179 + REVERSE AMER FIN OVER AMERICA		MB	\$449.00	
246	1858SL	CENT	MAJOR MISALIGNED REVERSE	VG+	MB	\$75.00	
247	1858LL	CENT	LARGE OBERSE CUD FEC-1858-16-RET	AG+	MB	\$45.00	
248	1889	CENT	DOUBLED DIE REVERSE FS-01-1889-801(010.81)	VF	MB	\$20.00	
249	1862	CENT	OBERSE RIM CUDS 11:00 TO 2:00	FIN	MB	\$19.00	
*	250	1864L	CENT	CUD REVERSE 8:00 TO 10:00 IC-1864-7R	GD	MB	\$79.00
251	1887	CENT	CUD REVERSE 9:00 TO 10:30 IC-1887-3RB	GD	MB	\$39.00	
252	1864L	CENT	ROTATED REVERSE 80 DEGREES CCW	AG	MB	\$22.00	
253	1907	CENT	5% CURVED CLIPS AT 4:00 & 10:00	VF	MB	\$45.00	
254	N.D.	CENT	COPPER TYPE 2 PLANCHET WITH 3% CURVED CLIP	UNC	MB	\$8.00	
*	255	N.D.	CENT	TYPE 1 COPPER BLANK WITH 45+ CURVED CLIP + 5% C.CLIP 30.3 GRAINS	UNC	MB	\$45.00
*	256	N.D.	CENT	TYPE 1 COPPER BLANK WITH 40% CURVED CLIP + 2 OVERLAPPING SMALLER CLIPS	UNC	MB	\$45.00
257	N.D.	CENT	TYPE 1 COPPER BLANK WITH 32% STRAIGHT CLIP	BU	MB	\$45.00	
258	N.D.	CENT	TYPE 2 ZINC PLANCHET	UNC	MB	\$0.50	
259	N.D.	CENT	TYPE 2 ZINC PLANCHET	UNC	MB	\$1.50	
*	260	1961	CENT	DOUBLE STRUCK, 2ND 65% OFF CENTER 6:00 UNIFACE REVERSE 2 DATES V RARE DATE	UNC	MB	\$425.00
261	N.D.	CENT	OBV STRUCK THRU MID STATE CAPPED DIE	UNC	MB	\$22.00	
262	1974 D	CENT	SLIGHT PARTIAL COLLAR DISTORTED OBERSE STRUCK THRU LATE STAGE CAPPED DIE?	UNC	MB	\$15.00	
*	263	N.D.	CENT	OBV BROCKAGE & COUNTER BROCKAGE BY CAPPED DIE WOWSER!!	UNC	MB	\$95.00
264	1973 D	CENT	MISALIGNED OBERSE DIE	AU	MB	\$1.00	
265	1997	CENT	VERY HIGH RIM FROM THE STRIKE NEAT	BU	MB	\$5.00	
*	266	N.D.	CENT	WHEAT BACK, WITH LARGE CUD OBERSE 2:00 TO 5:00 LC-ND-13A WHEAT	VF	MB	\$79.00
267	1955	CENT	CRACKED SKULL	BU	MB	\$2.50	
268	1969 S	CENT	MACHINE DOUBLING	UNC	MB	\$2.50	
*	269	1965	CENT	STRUCK THRU PLANCHET UNIFACE GHOST REV	BU	MB	\$45.00
270	1970 S	CENT	STRUCK THRU LATE STAGE CAPPED DIE OBV	BU	MB	\$35.00	

271	1972 D	CENT	STRUCK WITH FILLED DIE OBVERSE	UNC	MB	\$0.50
272	1999	CENT	HIGH FLANGED PARTIAL COLLAR OBVERSE	UNC	MB	\$4.00
273	1944	CENT	TILTED PARTIAL COLLAR	BU	MB	\$8.00
274	1972 D	CENT	PARTIAL COLLAR	UNC	MB	\$2.00
275	1971	CENT	5% INDENT 12:30 BROADSTRUCK	BU	MB	\$9.50
276	1972	CENT	UNCENT BROADSTRIKE LOOKS 10% OFF CENTER	UNC	MB	\$8.00
277	1987	CENT	UNCENTERED BROADSTRIKE	UNC	MB	\$2.50
278	1987	CENT	UNCENT BROADSTRIKE LOOKS OFF CENTER	UNC	MB	\$2.50
279	1989	CENT	BROADSTRK WITH PART COLL VERY HIGH RIMS	UNC	MB	\$2.50
280	1990	CENT	UNCENTERED BROADSTRIKE	BU	MB	\$2.50
281	1999	CENT	UNCENTERED BROADSTRIKE	BU	MB	\$2.50
282	1919	CENT	DEEP & WIDE LAMINATION OBVERSE 12:00 6:00	FIN	MB	\$3.50
283	1921 S	CENT	LAMINATION HEAD TO SHOULDER	FIN	MB	\$2.00
284	1925	CENT	LAMINATION AT DATE	VG	MB	\$1.00
285	1940 D	CENT	LAMINATION STREAKS 5:00 TO 10:30 OBVERSE	VF	MB	\$0.75
286	1942 S	CENT	LAMINATION REVERSE 11:00 TO 12:00	VF	MB	\$0.50
287	1944 S	CENT	LAMINATION STREAK 2:00 TO 7:00	VG	MB	\$0.50
288	1948 S	CENT	LAMINATION ON HEAD OBVERSE	VF	MB	\$0.50
289	1950 D	CENT	LAMINATION 5:00 TO 9:30 OBVERSE	FIN	MB	\$0.50
290	1966	CENT	LAMINATION BUBBLES OBVERSE 8:30 TO 10:00	BU	MB	\$2.00
291	1969 D	CENT	LAMINATIONS AROUND RIM	UNC	MB	\$1.00
292	1971 D	CENT	LAMINATION FLAKE REVERSE	AU	MB	\$4.50
293	1973 D	CENT	LAMINATION ON COAT	BU	MB	\$0.50
294	1977	CENT	SMALL LAMINATION FLAKE 7:30 OBVERSE SPOTS	UNC	MB	\$0.25
295	1983	CENT	BUBBLED SURFACES BRASS COLORED PLATING	UNC	MB	\$4.00
296	1968 D	CENT	PLATING LAMINATED OFF IN FLAKES + UNPLATED 20% AROUND RIM REVERSE	UNC	MB	\$18.00
297	2002 S	CENT	HANGING COPPER ON RIM	PRF	MB	\$9.00
298	1952D/S	CENT	OVER MINT MARK #1 FS 01-1952 D-501	F/VF	MB	\$15.00
299	1955 D	CENT	DOUBLED DIE OBV 1-0-IV-VIII FS-01-1955D-101	BU	MB	\$60.00
300	1956 D	CENT	RPM #8 EDS FS-01-1956D-501	FIN	MB	\$20.00
301	1960 D	CENT	RPM #100 STAGE D DDO--1-O-III LARGE /SMALL SM SPOT OBV	BU	MB	\$95.00
302	1944 D	CENT	RPM #1 WDDO-022	BU	MB	\$6.50
303	1952 S	CENT	RPM #7 DIE CHIP LEFT WHEAT LINES, DIE GOUGE BEHIND BUST TO RIM	BU	MB	\$3.50
304	1954 D	CENT	RPM #2	BU	MB	\$4.50
305	1955 D	CENT	RPM #1	BU	MB	\$3.50
306	1955 D	CENT	RPM #3	BU	MB	\$4.00
307	1955 D	CENT	RPM #3	BU	MB	\$16.00
308	1955 D	CENT	RPM #4 SW	BU	MB	\$25.00
309	1955 S	CENT	RPM #1	BU	MB	\$2.00
310	1955 S	CENT	RPM #2 STAGE E	BU	MB	\$4.50
311	1955 S	CENT	RPM #2	BU	MB	\$4.50
312	1955 S	CENT	RPM #2 STAGE E.5	BU	MB	\$4.50
313	1955 S	CENT	RPM #2 STAGE F	BU	MB	\$4.50
314	1955 S	CENT	RPM #2 STAGE G	BU	MB	\$4.50
315	1955 S	CENT	RPM #2 STAGE H	BU	MB	\$4.50
316	1955 S	CENT	RPM #2 STAGE I	BU	MB	\$4.50
317	1955 S	CENT	RPM #2 STAGE J	BU	MB	\$4.50
318	1955 S	CENT	RPM #2 STAGE K/L	BU	MB	\$4.50
319	1955 S	CENT	RPM #3	BU	MB	\$2.00
320	1955 S	CENT	RPM 005	BU	MB	\$4.00
321	1955 S	CENT	RPM #4 STAGE A.5	BU	MB	\$4.50
322	1955 S	CENT	RPM #4 STAGE B	BU	MB	\$4.50
323	1955 S	CENT	RPM #4 STAGE C/D	BU	MB	\$4.50
324	1955 S	CENT	RPM #4 STAHE E.5	BU	MB	\$4.50

325	1955	S	CENT	RPM #4	STAGE F	BU	MB	\$4.50
326	1955	S	CENT	RPM #4	STAGE F.5	BU	MB	\$4.50
327	1955	S	CENT	RPM #5	STAGE G	BU	MB	\$4.50
328	1955	S	CENT	RPM #4		BU	MB	\$4.00
329	1956	D	CENT	RPM #5		BU	MB	\$4.00
330	1957	D	CENT	RPM #17		BU	MB	\$3.00
331	1958	D	CENT	RPM #1		BU	MB	\$5.00
332	1958	D	CENT	RPM #2		BU	MB	\$4.00
333	1958	D	CENT	RPM #7		BU	MB	\$5.00
334	1958	D	CENT	RPM #18		BU	MB	\$4.00
335	1959	D	CENT	RPM #7		BU	MB	\$3.50
336	1959	D	CENT	RPM #6		BU	MB	\$3.00
337	1959	D	CENT	RPM #8		BU	MB	\$5.75
338	1959	D	CENT	RPM #9		BU	MB	\$3.00
339	1959	D	CENT	RPM #10		BU	MB	\$3.00
340	1959	D	CENT	RPM #13		BU	MB	\$3.50
341	1960	D	CENT	RPM #2		BU	MB	\$2.75
342	1960	D	CENT	RPM #5		BU	MB	\$2.75
343	1960	D	CENT	RPM #13		BU	MB	\$6.00
344	1960	D	CENT	RPM #15		BU	MB	\$3.25
345	1960	D	CENT	RPM #16		BU	MB	\$6.00
346	1960	D	CENT	RPM #17		BU	MB	\$6.00
347	1960	D	CENT	RPM #19		BU	MB	\$5.75
348	1960	D	CENT	RPM #20		BU	MB	\$2.75
349	1960	D	CENT	RPM #21		BU	MB	\$5.00
350	1960	D	CENT	RPM #23		BU	MB	\$2.75
351	1960	D	CENT	RPM #24		BU	MB	\$2.75
352	1960	D	CENT	RPM #29		BU	MB	\$2.75
353	1960	D	CENT	RPM #35	STAGE A	BU	MB	\$3.00
354	1960	D	CENT	RPM #42		BU	MB	\$2.50
355	1960	D	CENT	RPM #47		BU	MB	\$2.50
356	1960	D	CENT	RPM #49		BU	MB	\$3.00
357	1960	D	CENT	RPM #54		BU	MB	\$2.75
358	1960	D	CENT	RPM #71		BU	MB	\$2.50
359	1960	D	CENT	RPM #102		BU	MB	\$2.75
360	1960	D	CENT	RPM #110		BU	MB	\$3.00
361	1961	D	CENT	RPM #2		BU	MB	\$2.50
362	1961	D	CENT	RPM #4	STAGE E	BU	MB	\$2.50
363	1961	D	CENT	RPM #11		BU	MB	\$2.50
364	1961	D	CENT	RPM #16		BU	MB	\$2.50
365	1961	D	CENT	RPM #18		BU	MB	\$2.50
366	1961	D	CENT	RPM #12		BU	MB	\$2.50
367	1961	D	CENT	RPM #21		BU	MB	\$3.50
368	1961	D	CENT	RPM #22		BU	MB	\$2.50
369	1961	D	CENT	RPM ##23		BU	MB	\$2.00
370	1961	D	CENT	RPM #27		BU	MB	\$2.50
371	1961	D	CENT	RPM #28		BU	MB	\$3.00
372	1961	D	CENT	RPM #34		BU	MB	\$2.50
373	1961	D	CENT	RPM #39		BU	MB	\$2.50
374	1961	D	CENT	RPM #47		BU	MB	\$3.00
375	1961	D	CENT	RPM #64		BU	MB	\$2.50
376	1961	D	CENT	RPM D	OVER D	BU	MB	\$1.50
377	1962	D	CENT	RPM #2		BU	MB	\$2.25
378	1962	D	CENT	RPM #5		BU	MB	\$2.25
379	1962	D	CENT	RPM #6		BU	MB	\$2.25
380	1962	D	CENT	RPM #8		BU	MB	\$2.25
381	1962	D	CENT	RPM #12		BU	MB	\$2.25

382	1962 D	CENT	RPM #15	BU	MB	\$2.25
383	1963 D	CENT	RPM #5	BU	MB	\$2.50
384	1963 D	CENT	RPM #6	BU	MB	\$2.50
385	1963 D	CENT	RPM #9	BU	MB	\$2.50
386	1963 D	CENT	RPM #16	BU	MB	\$2.50
387	1964	CENT	DOUBLED DIE REV FS-803	FIN	MB	\$4.00
388	1964 D	CENT	RPM #2	BU	MB	\$3.25
389	1964 D	CENT	RPM #7	BU	MB	\$2.50
390	1964 D	CENT	RPM #8	BU	MB	\$2.75
391	1964 D	CENT	RPM #12	BU	MB	\$2.25
392	1964 D	CENT	RPM #16	BU	MB	\$2.75
393	1972	CENT	DOUBLED DIE OBVERSE FS-109 (033.59)	FIN	MB	\$0.50
394	1972	CENT	DOUBLED DIE OBVERSE FS-109 (033.59)	VF	MB	\$1.00
395	1982	CENT	SM DATE ZINC DOUBLED DIE REV FS01-1982-1801	FIN	MB	\$2.50
396	1997	CENT	DOUBLE EAR FS-101-(043)	BU	MB	\$99.00
397	2009	CENT	ROLL 50 COINS DOUBLED DIE REVERSE -004	BU	MB	\$125.00
398	1920	CENT	RIM CLIP 6:00	GD	MB	\$1.50
399	1925	CENT	RIM CLIP 8:00	VG	MB	\$1.50
400	1931 S	CENT	2% RAGGED CLIP 1:00 RARER DATE	EF	MB	\$155.00
401	1940	CENT	3% CURVED CLIP 7:00	FIN	MB	\$2.00
402	1941	CENT	RIM CLIPS AT 4:00 & 7:00	VF	MB	\$2.00
403	1941	CENT	RIM CLIP 10:30	EF	MB	\$1.50
404	1942	CENT	RIM CLIP 3:00	VF	MB	\$0.75
405	1944	CENT	RIM CLIP 2:00 COUNTER SKID	EF	MB	\$0.75
406	1944 S	CENT	RIM CLIP 1:00 R/B	UNC	MB	\$6.00
407	1945	CENT	2% CURVED CLIP 10:30	VF	MB	\$1.50
408	1946	CENT	3% CURVED CLIP 12:30	EF	MB	\$1.50
409	1951	CENT	2% CURVED CLIP 4:00	VF	MB	\$1.50
* 410	1957 D	CENT	5% STRAIGHT CLIP 2:00	AU	MB	\$1.50
411	1958	CENT	RIM CLIP 8:00	BU	MB	\$2.50
412	1959	CENT	2% CURVED CLIP 8:00	BU	MB	\$2.50
413	1960	CENT	LGE DATE, 5% CURVED CLIP 1:00	BU	MB	\$2.50
414	1960	CENT	RIM CLIP 5:00	AU	MB	\$1.50
415	1961 D	CENT	5% CLIP 6:30	FIN	MB	\$0.75
416	1964	CENT	3% CURVED CLIP 10:00	BU	MB	\$2.00
417	1964 D	CENT	5% CURVED CLIP 10:00	AU	MB	\$2.00
418	1964 D	CENT	RIM CLIP 4:00 SMALL SPOT ABOVE DATE	UNC	MB	\$1.00
419	1965	CENT	5% CURVED CLIP 3:00	BU	MB	\$2.00
* 420	1968	CENT	5% CURVED CLIP 3:00	BU	MB	\$2.00
421	1968 S	CENT	2% CURVED CLIP 5:00	UNC	MB	\$3.50
422	1970	CENT	RIM CLIP 10:30	UNC	MB	\$2.00
423	1983	CENT	RIM CLIP 11:00	UNC	MB	\$3.50
424	1983	CENT	5% curved clip 2:00 + 2% at 9:00 few spots	UNC	MB	\$4.50
425	1970	CENT	15% OFF CENTER 1:00 NOTE: THE FOLLOWING LOTS TO 494 ARE A NICE COMPLETE DATE & MM SET 1970 P TO 2001 D	BU	MB	\$15.00
426	1970 D	CENT	45% OFF CENTER 7:30	BU	MB	\$15.00
* 427	1970 S	CENT	20% OFF CENTER 8:30 DON'T MISS IF YOU NEED A DATE OR MINT MARK	BU	MB	\$75.00
428	1971	CENT	25% OFF CENTER 1:00	BU	MB	\$15.00
429	1971 D	CENT	50% OFF CENTER 8:00	BU	MB	\$15.00
* 430	1971 S	CENT	80% OFF CENTER 10:00 FULL DATE & MM	BU	MB	\$75.00
431	1972	CENT	20% OFF CENTER 2:00	BU	MB	\$10.00
432	1972 D	CENT	50% OFF CENTER 9:00	BU	MB	\$15.00
* 433	1972 S	CENT	50% OFF CENTER 11:00	BU	MB	\$125.00
434	1973	CENT	45% OFF CENTER 9:00	BU	MB	\$15.00
435	1973 D	CENT	35% OFF CENTER 8:00	BU	MB	\$15.00

436	1974	CENT	50% OFF CENTER	11:30	UNC	MB	\$15.00	
437	1974 D	CENT	55% OFF CENTER	8:30	BU	MB	\$15.00	
*	438	1974 D	CENT	50% OFF CENTER	11:00	BU	MB	\$15.00
439	1975	CENT	70% OFF CENTER	9:00 UNIFACE	UNC	MB	\$15.00	
440	1975 D	CENT	50% OFF CENTER	9:00	BU	MB	\$15.00	
*	441	1976	CENT	50% OFF CENTER	12:00	BU	MB	\$15.00
442	1976 D	CENT	75% OFF CENTER	10:00	BU	MB	\$15.00	
443	1977	CENT	60% OFF CENTER	11:00	BU	MB	\$15.00	
444	1977 D	CENT	20% OFF CENTER	5:00	UNC	MB	\$15.00	
445	1978	CENT	50% OFF CENTER	8:00	UNC	MB	\$15.00	
446	1978 D	CENT	55% OFF CENTER	8:00 R/B	UNC	MB	\$15.00	
447	1979	CENT	50% OFF CENTER	7:30	BU	MB	\$15.00	
448	1979 D	CENT	50% OFF CENTER	10:00	BU	MB	\$15.00	
449	1980 P	CENT	50% OFF CENTER	9:00	BU	MB	\$15.00	
450	1980 P	CENT	60% OFF CENTER	9:00	UNC	MB	\$15.00	
451	1980 D	CENT	45% OFF CENTER	8:00	BU	MB	\$15.00	
452	1981	CENT	45% OFF CENTER	8:00	BU	MB	\$15.00	
453	1981 D	CENT	65% OFF CENTER	9:00	BU	MB	\$15.00	
454	1982	CENT	60% OFF CENTER	8:00	BU	MB	\$10.00	
455	1982 D	CENT	70% OFF CENTER	10:00	BU	MB	\$15.00	
456	1983	CENT	35% OFF CENTER	8:30	BU	MB	\$5.00	
457	1983 D	CENT	50% OFF CENTER	9:30	BU	MB	\$5.00	
458	1984	CENT	35% OFF CENTER	8:00	BU	MB	\$5.00	
459	1984 D	CENT	50% OFF CENTER	8:30	BU	MB	\$5.00	
460	1985	CENT	40% OFF CENTER	8:00	BU	MB	\$5.00	
461	1985 D	CENT	50% OFF CENTER	8:00	BU	MB	\$5.00	
462	1986	CENT	40% OFF CENTER	8:00	BU	MB	\$5.00	
463	1986 D	CENT	50% OFF CENTER	9:30	BU	MB	\$5.00	
464	1987	CENT	50% OFF CENTER	8:00	BU	MB	\$5.00	
465	1987 D	CENT	60% OFF CENTER	9:00 UNIFACE	BU	MB	\$5.00	
466	1988	CENT	35% OFF CENTER	11:00	BU	MB	\$5.00	
467	1988 D	CENT	50% OFF CENTER	11:00	BU	MB	\$5.00	
468	1989	CENT	50% OFF CENTER	9:00	BU	MB	\$5.00	
469	1989 D	CENT	50% OFF CENTER	9:00	BU	MB	\$5.00	
470	1990	CENT	25% OFF CENTER	9:00	BU	MB	\$5.00	
*	471	1990 D	CENT	40% OFF CENTER	9:00	BU	MB	\$10.00
472	1991	CENT	35% OFF CENTER	10:00	BU	MB	\$5.00	
473	1991 D	CENT	55% OFF CENTER	10:00	BU	MB	\$10.00	
474	1992	CENT	50% OFF CENTER	8:00	BU	MB	\$5.00	
*	475	1992 D	CENT	55% OFF CENTER	10:00	BU	MB	\$10.00
476	1993	CENT	25% OFF CENTER	8:00	BU	MB	\$5.00	
477	1993 D	CENT	50% OFF CENTER	9:00	BU	MB	\$10.00	
478	1994	CENT	40% OFF CENTER	8:00	BU	MB	\$5.00	
479	1994 D	CENT	55% OFF CENTER	9:00	BU	MB	\$10.00	
480	1995	CENT	50% OFF CENTER	9:00	BU	MB	\$5.00	
481	1995 D	CENT	65% OFF CENTER	9:00	BU	MB	\$10.00	
482	1996	CENT	40% OFF CENTER	9:00	BU	MB	\$5.00	
483	1996 D	CENT	35% OFF CENTER	8:00	BU	MB	\$10.00	
484	1997	CENT	50% OFF CENTER	8:00	BU	MB	\$5.00	
485	1997 D	CENT	40% OFF CENTER	8:00	BU	MB	\$10.00	
486	1998	CENT	20% OFF CENTER	7:00	BU	MB	\$5.00	
487	1998 D	CENT	30% OFF CENTER	9:00	BU	MB	\$10.00	
488	1999	CENT	35% OFF CENTER	8:00	BU	MB	\$5.00	
489	1999 D	CENT	45% OFF CENTER	8:30	BU	MB	\$10.00	
490	2000	CENT	45% OFF CENTER	11:00	BU	MB	\$5.00	
491	2000	CENT	30% OFF CENTER	8:00	BU	MB	\$5.00	
492	2000 D	CENT	20% OFF CENTER	1:00	BU	MB	\$5.00	

493	2001	CENT	20% OFF CENTER 7:30	BU	MB	\$5.00
494	2001 D	CENT	15% OFF CENTER 1:00 THE END OF THIS COLLECTION MORE OFF CENTERS FOLLOWS	BU	MB	\$10.00
*	495 X951 D	CENT	85% OFF CENTER 9:00 DSBS	UNC	MB	\$95.00
*	496 1952 D	CENT	50% OFF CENTER 10:30 BROWN	UNC	MB	\$98.00
497	1968	CENT	5% OFF CENTER 2:00 BROWN	UNC	MB	\$35.00
498	1971 X	CENT	60% OFF CENTER 8:00 GLOSSY BROWN	BU	MB	\$18.00
499	1972 D	CENT	75% OFF CENTER 10:30 RED/BRN	UNC	MB	\$24.00
*	500 1976	CENT	60% OFF CENTER 10:30 RED	BU	MB	\$35.00
501	1981 X	CENT	45% OFF CENTER 8:00	BU	MB	\$14.00
502	198(5)	CENT	45% OFF CENTER 7:00	UNC	MB	\$9.00
503	1990	CENT	30% OFF CENTER 1:30	UNC	MB	\$8.00
504	1993 D	CENT	65% OFF CENTER 9:00	BU	MB	\$27.00
505	1996 D	CENT	40% OFF CENTER 1:00	BU	MB	\$28.00
506	N.D.	CENT	ZINC, 60% OFF CENTER 3:30 WITH STRANGE ATTACHED FLAP REVERSE RARE	UNC	MB	\$25.00
507	198x D	CENT	40% OFF CENTER 1:00	UNC	MB	\$3.00
508	199X	CENT	25% OFF CENTER 7:00	BU	MB	\$3.00
509	19XX	CENT	ZINC, 50% OFF CENTER 1:00	BU	MB	\$3.00
510	N.D.	CENT	ZINC, 50% OFF CENTER 2:00	UNC	MB	\$3.00
511	198X	CENT	ZINC, 40% OFF CENTER 1:00	BU	MB	\$3.00
512	198X	CENT	ZINC, 35% OFF CENTER 1:00	BU	MB	\$3.00
513	19XX	CENT	ZINC, 40% OFF CENTER 1:00	BU	MB	\$3.00
514	N.D.	CENT	ZINC, 35% OFF CENTER 4:00	BU	MB	\$3.00
515	1970 S	CENT	LOT 8 COINS STRUCK THRU LATE STAGE CAPPED DIE VARIOUS STAGES NEAT!	BU	MB	\$280.00
516	1995	CENT	LOT 10 COINS, VARIOUS STAGES OF FILLED DIES	BU	MB	\$3.00
517	1955	CENT	ROLL 50 COINS, PRE CUD DIE CRACKS BASE OF BUST	BU	MB	\$49.00
518	1955	CENT	ROLL 50 COINS, SHIFTED 5 POORMANS DOUBLED DIE	BU	MB	\$65.00
519	1955	CENT	ROLL 50 COINS, WITH CRACKED SKULL DIE CRACKS	BU	MB	\$49.00
520	1960 D	CENT	ROLL 50 COINS, SMALL DATE WITH DIE CHIPS IN LETTERS & DATE	ASST	MB	\$10.00
521	ASST	CENT	ROLL 21 COINS, DIE CRACKS OBVERSE ON HEAD	ASST	MB	\$4.00
522	ASST	CENT	ROLL 29 COINS, ASSORTED DIE CHIPS	ASST	MB	\$5.75
523	1960 D	CENT	ROLL 50 COINS, SMALL DATE WITH DIE CHIPS IN LETTERS & DATE	ASST	MB	\$10.00
524	ASST	CENT	8 MEMORIALS IN 2x2'S WITH DIE CHIPS	ASST	MB	\$1.50
525	ASST	CENT	8 MEMORIALS IN 2x2'S WITH STRUCK THRU	ASST	MB	\$1.50
526	ASST	CENT	14 MEMORIALS IN 2x2'S MINOR MISALIGNED DIES	ASST	MB	\$3.00
527	ASST	CENT	18 MEMORIALS IN 2x2'S WITH MINOR RIM CUDS & CHIPS	ASST	MB	\$3.50
528	ASST	CENT	19 MEMORIALS IN 2x2'S WITH MINOR ERRORS, BIE, CHIPS, MAD	ASST	MB	\$3.50
529	ASST	CENT	19 MEM 1C IN 2x2'S DIE CRACKS & MISSING LETT.	ASST	MB	\$3.75
530	ASST	CENT	20 MEMORIALS IN 2x2'S WTH MONOR ERRORS	ASST	MB	\$4.00
531	1943	OTHER	AUSTRALIA PENNY, LAMINATION OBV 1:00 TO 7:00	AU	MB	\$3.50
*	532 1983	OTHER	BERMUDA EXPERIMENTAL TRIAL BLANK PLANCHET COMES WITH STRUCK COIN THAT WAS LATER MADE	BU	MB	\$55.00
533	1829 R	OTHER	BRAZIL 20r, 5% OFF CENTER 11:00	VF	MB	\$35.00
534	1972	OTHER	BRAZIL 20 CRUZEIROS PROOF! WITH STRUCK IN RETAINED STAPLE 6:00 TO EDGE	PRF	MB	\$65.00
535	N.D.	OTHER	BYSANTINE ANCIENT, FLIPOVER DOUBLE STRUCK	VG	MB	\$85.00
*	536 55 BC	OTHER	ROMAN REPUBLIC, OBV: VEILED HEAD OF CONCORD, REV: MIRROR BROCKAGE WANT AN	FIN	MB	\$85.00

EARLY ERROR??						
537	1951	OTHER CANADA CENT, LAMINATION 10:00 ACROSS HEAD	VF	MB		\$0.50
538	1953	OTHER CANADA DIME, RIM CLIP 4:30	EF	MB		\$3.00
*	539	N.D. OTHER CANADA DIME, UNIFACE REV WITH 40% INDENT, OBV HALF STRUCK & HALF UNIFACE, WHATSIT??	BU	MB		\$230.00
*	540	(1905) OTHER KIANGSY PROV, CHINA 10 CASH, 20% OBV BROCKAGED BY SMALLER COIN + 3 SMALL CUDS	VG	MB		\$45.00
541	N.D.	OTHER CHINA 20 CASH, WITH 1/2 INCH LONG BLOW HOLE + EDGE CRACKS	FIN	MB		\$25.00
542	N.D.	OTHER CHINA 10 CASH, WITH MAJOR OBV & REV CUDS	FIN	MB		\$55.00
543	1917	OTHER CHINA 20 CASH, 70% OFF CENTER + LARGE ROLLED IN SLAG ON OBV & SMALL REV	VG	MB		\$45.00
544	1917	OTHER CHINA 20 CASH, BROADSTRUCK HUPOO PROV.	EF	MB		\$24.00
545	N.D.	OTHER REPUBLIC CHINA 10 CASH, CRACK THRU PLANCHET 2:00 TO 8:00 ALMOST IN 2 PIECES	FIN	MB		\$17.00
546	N.D.	OTHER CNINA 20 CASH?, TYPE 2 PLANCHET	EF	MB		\$12.00
547	1947	OTHER COSTA RICA 10 CENT, FULL MIRROR BROCKAGE	EF	MB		\$95.00
548	1966	OTHER COLUMBIA 10c, HEAVY DIE CRACKS THRU DATE	VF	MB		\$1.50
549	1918	OTHER FRENCH NOTEGELD (GAME COUNTER) 20c, 3% CURVED CLIP 1:00 + CUDS 6:00 AREA	BU	MB		\$22.00
550	(1650)	OTHER GERMAN STATE GROSCHN, FULL MIRROR BROCKAGE	EF	MB		\$125.00
551	(1945)	OTHER JAPAN SEN, LAMINATION 2:00 TO CENTER OBV & REVERSSSE	FIN	MB		\$2.50
552	1902	OTHER MALDIVES 4 LARIAT, DOUBLE STRUCK ON CENTER + SMALL RIM CUD	EF	MB		\$12.50
553	1966	OTHER SPAIN UNA PESETA, DOUBLE RIM CLIPS AT 12:30 & 3:00	EF	MB		\$3.00
554	1967	OTHER NEW ZEALAND CENT, 5% CURVED CLIP 8:00	AU	MB		\$2.50
555	1971	OTHER PAKISTAN PAISA, 2 LARGE DIE CRACKS OBVERSE	UNC	MB		\$2.00
556	1937	OTHER PHILIPPINES, RETAINED CUD 12:00 OBV NICE	UNC	MB		\$12.00
*	557	1985 OTHER PHILIPPINES, DOUBLE DENOMINATION KM241.1, 50c OVERSTRUCK 85% BY EARLIER TYPE KM 200 LOOK ALIKA TOKEN--NEAT!	UNC	MB		\$125.00
*	558	1964 OTHER RHODISIA & NYASALAND, 1/2c, CENTER HOLE PUNCHED WAY OFF CENTER	UNC	MB		\$42.00
559	N.D.	OTHER RUSSIA 1 KOPECK, 50% OFF CENTER REVERSE BROCKAGE	VF	MB		\$55.00
560	1796	OTHER "COPY" U.S. DOLLAR, DOUBLE STRUCK, 2ND 5% OFF CENTER 6:00	BU	MB		\$29.00
561	N.D.	OTHER 5c SIZE GAMING TOKEN OVERSTRUCK ON STRUCK TOKEN	VF	MB		\$1.50



PRICES REALIZED SALE 44 -- CLOSED 3/31/2011

3	\$225.00	126	\$36.30	R	216	\$6.00	330	\$3.85	R	465	\$17.60	R
6	\$60.50	R 127	\$55.00		217	\$13.25	333	\$2.00		466	\$4.00	
7	\$110.00	129	\$38.50	R	219	\$5.50	335	\$44.06	R	468	\$14.30	R
10	\$75.00	130	\$31.00		220	\$5.00	339	\$1.00		470	\$13.00	T
12	\$950.00	131	\$32.45	R	222	\$11.00	R 340	\$2.50		471	\$11.00	R
24	\$215.00	132	\$110.00		225	\$68.20	R 341	\$1.50		472	\$14.00	
26	\$180.00	133	\$39.60	R	226	\$2.89	R 342	\$0.50		473	\$12.10	R
27	\$40.00	134	\$15.00		228	\$33.79	343	\$3.30	R	474	\$1.92	R
35	\$605.00	R 135	\$15.00		230	\$3.00	345	\$2.50		475	\$1.65	R
38	\$35.00	137	\$137.50	R	232	\$9.00	346	\$3.00	T	476	\$1.65	R
39	\$195.00	142	\$115.50	R	233	\$45.00	348	\$3.30	R	477	\$1.92	R
40	\$506.00	R 143	\$30.00		234	\$12.07	R 349	\$8.24	R	478	\$5.50	R
43	\$80.00	144	\$22.00		235	\$11.00	R 350	\$0.50		479	\$5.00	
49	\$495.00	145	\$22.50		237	\$2.75	R 351	\$0.50		480	\$125.00	
54	\$395.00	146	\$45.00		238	\$5.00	354	\$1.00		481	\$3.30	R
61	\$850.00	147	\$19.80	R	239	\$9.00	357	\$0.67	R	482	\$3.50	T
63	\$595.00	149	\$45.00		249	\$15.00	358	\$4.40	R	483	\$3.85	R
66	\$95.00	151	\$99.00		253	\$15.00	359	\$0.50		484	\$3.68	R
67	\$145.00	152	\$17.60	R	254	\$3.00	360	\$0.50		485	\$3.68	R
68	\$275.00	154	\$15.00		256	\$29.70	R 361	\$0.50		486	\$2.75	
73	\$45.00	156	\$19.80	R	257	\$220.00	362	\$0.50		487	\$33.00	R
74	\$55.00	157	\$80.00		262	\$450.00	363	\$0.50		488	\$22.00	R
78	\$1,150.00	158	\$20.00		268	\$7.00	364	\$0.50		489	\$7.70	R
79	\$85.00	160	\$8.00	T	273	\$12.00	366	\$0.98	R	490	\$23.10	R
80	\$65.00	161	\$11.50		274	\$2.75	R 367	\$4.13	R	491	\$3.58	R
81	\$85.00	162	\$7.15	R	275	\$6.60	R 368	\$0.50		493	\$16.00	
82	\$110.00	163	\$23.00		276	\$1.10	R 369	\$0.50		494	\$3.00	
83	\$210.00	164	\$9.00		279	\$5.00	370	\$3.00		495	\$3.85	R
85	\$65.00	165	\$18.00		280	\$6.00	372	\$4.00		496	\$1.10	R
86	\$160.00	168	\$9.50		281	\$3.50	373	\$2.75	R	497	\$8.25	R
87	\$45.00	169	\$9.00		286	\$2.75	R 374	\$6.60	R	502	\$10.00	
89	\$995.00	170	\$34.50		287	\$1.00	376	\$27.00	T	504	\$4.50	
91	\$136.40	172	\$16.55		288	\$435.00	377	\$22.00	T			
92	\$35.00	174	\$56.10	R	289	\$4.50	380	\$22.00				
93	\$50.00	175	\$13.20	R	293	\$45.00	385	\$55.00				
94	\$46.20	176	\$3.00		294	\$11.25	387	\$6.00				
95	\$110.00	177	\$3.85	R	296	\$45.00	389	\$30.00				
96	\$35.00	178	\$4.40	R	297	\$95.00	390	\$20.00				
97	\$225.00	179	\$140.00		299	\$49.00	395	\$4.00				
101	\$95.00	182	\$2.00		301	\$23.97	396	\$2.00				
104	\$31.00	184	\$6.60	R	303	\$995.00	401	\$8.50				
105	\$51.15	185	\$52.00		306	\$50.05	R 403	\$5.50				
106	\$50.00	186	\$85.00		308	\$3.50	417	\$2.25				
107	\$46.50	187	\$125.00		312	\$7.15	R 421	\$2.75				
112	\$36.00	193	\$249.00		314	\$7.15	R 422	\$2.00				
113	\$35.00	198	\$11.00	R	315	\$1.50	425	\$2.50				
114	\$61.80	200	\$65.00		319	\$0.50	432	\$2.25				
117	\$42.00	201	\$79.00		320	\$3.00	434	\$3.50				
119	\$33.00	209	\$3.10		321	\$3.00	436	\$2.25				
120	\$41.20	210	\$3.50		322	\$265.00	458	\$38.00				
124	\$44.00	213	\$24.00	T	325	\$1.00	461	\$12.00				
125	\$32.40	214	\$9.50		328	\$6.00	462	\$16.50	R			
		215	\$5.00		329	\$2.00	464	\$15.00				

THANKS AGAIN TO ALL OF YOU. - LEN ROOSMALEN
 UNSOLD LOTS MAY BE PURCHASED FOR MINIMUM BID OR EST PRICE WITHIN NEXT 2 WEEKS.
 R = PRICE REDUCED FROM BID. T = TIE BIDS RECEIVED FIRST POST MARK WINS.
 THANKS IT FOR THIS SALE. THANKS TO ALL THAT JOINED IN ON THIS ONE.

JIM'S CBS

