

**JIM'S C&S**

Hilldale Shopping Center  
702 N. Midvale Blvd. B-2  
Madison, WI 53705  
(608) 233-2118

[www.jimscoins.net](http://www.jimscoins.net)



244. 1941 NICKEL STRUCK ON STRUCK CENT!

**NO. 38**

**\*FIRST CLASS\***

**MAIL BID SALE #J-38  
CLOSES MARCH 31, 2010**

- 1) SEND ALL BIDS TO: JIM'S COINS, 702 N. MIDVALE BLVD. B-2, MADISON, WI 53705, OR FAX #608-233-0175, OR PHONE 608-233-2118, OR EMAIL: jimscoins @sbcglobal.net
- 2) THE HIGHEST BIDDER ACKNOWLEDGED BY THE AUCTIONEER SHALL BE THE BUYER. THE AUCTIONEER RESERVES THE RIGHT TO REJECT ANY BID OR WITHDRAW ANY LOT FROM THE SALE. BIDDERS ARE RESPONSIBLE FOR THEIR OWN ERRORS, SO DOUBLE CHECK YOUR BIDS. THE FIRST POSTMARK WINS IN CASE OF A TIE BID.
- 3) ALL SALES ARE FOR CASH AND ARE PAYABLE IMMEDIATELY UPON RECEIPT OF THE INVOICE.
- 4) AUCTIONS ARE OPEN TO ALL AND NO DEPOSIT IS REQUIRED OR DESIRED.
- 5) NO UNLIMITED BIDS ARE ACCEPTED. WINNING BIDDERS WILL BE AWARDED LOT AT A 10% ADVANCE OVER THE SECOND HIGHEST BID. IF NO OTHER BIDS ARE RECEIVED FOR A LOT, THE BIDDER WILL BE AWARDED THE LOT AT THE MINIMUM BID, OR ESTIMATE IF NO MINIMUM IS GIVEN.
- 6) ALL ITEMS ARE GUARANTEED GENUINE. BIDDERS MAY RETURN ANY ITEM NOT AS DESCRIBED.
- 7) A \$1 HANDLING CHARGE WILL BE ADDED TO ALL WINNING INVOICES. BID EARLY AND BID OFTEN. THANKS! - LEN & JIM

* 1	1976 D	DOLL	DOUBLE STRUCK BICENTENNIAL, 2ND STRIKE 80% OFF CENTER 6:30, DIE STRUCK BOTH SIDES PCGS	MS61	MB	\$2,395.00
2	1972 D	DOLL	MISALIGNED OBVERSE DIE LOOKS ABOUT 5% TOWARDS 12:00 ANACS	MS65	MB	\$39.00
3	1979 P	DOLL	MISSING REVERSE CLAD LAYER PRETTY MUCH RED ANACS	MS64	MB	\$350.00
4	1999 P	DOLL	SUPER DOUBLE STRIKE, 2ND 75% OFF CENTER STRETCH UNIFACE REV ANACS	MS66	MB	\$1,795.00
5	1999 P	DOLL	FLIPOVER DOUBLE STRUCK, 2ND 85% OFF CENTER 3:00 DIE STRUCK BOTH SIDES NGC	MS65	MB	\$1,495.00
6	1921	DOLL	VAM-1 OBVERSE/REVERSE "SO CALLED" ZERBE DIES SEGS	AU58	MB	\$195.00
* 7	1999 P	DOLL	35% OFF CENTER 2:00 HIGH GRSDE NGC	MS67	MB	\$595.00
8	N.D.	DOLL	SUZY DOLLAR STRUCK 90% OFF CENTER 6:00 PCGS	MS64	MB	\$150.00
9	2007 P	DOLL	GEORGE WASHINGTON, REVERSE CLAD LAYER MISSING 6.02 GRAMS NGC	MS61	MB	\$395.00
10	(2007)	DOLL	GEO. WASHINGTON, MISSING EDGE LETTERING NGC	BU	MB	\$49.00
11	(2007)	DOLL	GEO. WASHINGTON, MISSING EDGE LETTERING, PCGS	MS66	MB	\$125.00
12	1964	HALF	STRUCK ON ROLLED THIN PLANCHET QUARTER STOCK PCGS	MS62	MB	\$249.00
13	1971 D	HALF	STRUCK ON 136 GRAINS THIN PLANCHET QUARTER STOCK PCGS	AU55	MB	\$169.00
14	1974 D	HALF	100% UNIFACE REVERSE LOOKS LIKE 2 PLANCHETS IN DIE PCGS	MS64	MB	\$260.00
* 15	1964	HALF	40% PARTIAL BROCKAGE 12:00 ON LARGE CENTERED BROADSTRIKE PCGS	MS62	MB	\$1,250.00
* 16	1990 P	HALF	STRUCK 15% OFF CENTER 10:00 LOOKS UNC NGC	AU58	MB	\$99.00
17	1976	HALF	5% MISALIGNED DIE 10:00, CORRODED UNC DETAILS ANACS NET	AU50	MB	\$12.00
18	1966	HALF	SPECIAL MINT SET COIN, DOUBLED DIE OBVERSE	MS66	MB	\$45.00

## PCGS

19	1971 D	HALF	FS-101, DOUBLED DIE OBERSE (DD NOT LISTED ON HOLDER) NGC	MS65	MB	\$59.00
20	1971 D	HALF	FS-101, DOUBLED DIE OBERSE (DD NOT LISTED ON HOLDER) NGC	MS64	MB	\$45.00
21	N.D.	HALF	KENNEDY CLAD HALF WAFFLED BY MINT SOME DETAILS BOTH SIDES PCGS	BU	MB	\$39.50
22	1974	QUAR	91 GRAINS WITH NO COPPER CORE PLANCHET PCGS	XF45	MB	\$350.00
23	1969	QUAR	STRUCK ON CENT PLANCHET 3.11 GRAMS NEAT IRRIDESCENT TONING NGC BN	MS65	MB	\$1,250.00
24	1956	QUAR	STRUCK ON NICKEL PLANCHET, EX HARRISON PHILLIPS COLLECTION PCGS	AU58	MB	\$549.00
25	1979	QUAR	STRUCK ON NICKEL PLANCHET PCGS	AU58	MB	\$199.00
*	26	2000 P	QUAR MASS, STRUCK 20% OFF CENTER 1:30 LITTLE GOLD TONING PCGS	MS66	MB	\$90.00
*	27	2007 D	QUAR UTAH, SUPER! DIE AJUSTMENT STRIKE JUT ENOUGH DETAIL TO TELL IT PCGS	MS62	MB	\$110.00
28	2000 D	QUAR	MASS, DIE ADJUSTMENT STRIKE WEAK REEDING, GOOD PORTION DETAILS MISSING PCGS	MS61	MB	\$100.00
29	1990 P	QUAR	PARTIAL COLLAR WITH CURVED CLIP, OBV EXPANDED LIKE BROADSTRIKE NGC	MS61	MB	\$23.00
*	30	1984 P	DIME STRUCK THRU CAPPED DIE ADHERED SPLIT OBERSE SEGS	AU58	MB	\$95.00
*	31	N.D.	DIME REVERSE CLAD LAYER SHELL ONLY OFF AFTER STRUCK PCGS	MS63	MB	\$99.00
32	1947 S	DIME	OVER MINT MARK, FS#10C-013 LOOKS UNDER GRADED ACG	MS64	MB	\$199.00
*	33	1903	NICK LARGE UNCENTERED BROADSTRIKE IMPROPERLY CLEANED COIN LOOKS NICE NGC DETAILS	VF	MB	\$195.00
34	1913	NICK	VARIETY 1, STRAIGHT CLIP 5:30 TO 7:00, + 20 DEGREE ROTATED REV ANACS	MS62	MB	\$275.00
35	N.D.	NICK	BUFFALO STRUCK 35% OFF CENTER 9:00 PRETTY GOOD LOOKING FOR GRADE NGC	VG8	MB	\$495.00
*	36	1957 D	NICK STRUCK ON CENT PLANCHET EARLY DATE PCGS	VF35	MB	\$299.00
37	2004 P	NICK	PEACE MEDAL DESIGN, WITH DOUBLED DIE OBERSE NOTED ON SLAB PCGS	MS64	MB	\$165.00
*	38	1977	NICK DOUBLE DENOMINATION ON STRUCK CENT, GREAT DETAILS, PERFECT OBV, REV SCRATCH, NCS DETAILS	AU	MB	\$499.00
*	39	1996 P	NICK DOUBLE STRUCK ROTATED IN COLLAR GOOD DETAILS OBV & REV NGC	MS62	MB	\$225.00
40	1835	CENT	LARGE CENT STRUCK 12% OFF CENTER 10:00 ON TYPE 1 PLANCHET NICE COIN FOR GRADE PCGS	GD06	MB	\$395.00
*	41	N.D.	CENT INDIAN, OBERSE COUNTER BROCKAGE, NEAT EXPANDED INDIAN HEAD UNIQUE, EAGLE EYE SEAL NGC BN	MS65	MB	\$2,100.00
42	1886	CENT	COLLAR DIE BREAK 9:30 TO 2:00 NGC BN	XF45	MB	\$295.00
43	1982	CENT	LRG DATE, FLIP OVER DOUBLE STRIKE ON 84% AG *SILVER* & 16% CU PLANCHET 2.4 GRAMS PLANCHET WEIRED! NGC	MS64	MB	\$1,500.00
44	1964 D	CENT	STRUCK ON SILVER 10c PLANCHET 2.52 GRAMS LIGHT SCRATCHES BACK OF HEAD UNC DETAILS NCS	UNC	MB	\$395.00
*	45	N.D.	CENT 50% OFF CENTER ON APROX 50% CURVED CLIPPED PLANCHET WOWSER!! NGC RB	MS64	MB	\$135.00
*	46	1965	CENT *SMS*, DOUBLE STRUCK, 2ND 10% OFF CENTER, 2 DATES 180o ROTATION BETWEEN STRIKES SPECIAL MINT SET COIN WOW! NGC RED	MS63	MB	\$525.00
47	1959 D	CENT	HAS EXTRA D INSIDE SECOND 9 ANACS RED	MS65	MB	\$150.00
48	1944 D	CENT	RPM #1 RED BROWN PCGS	MS64	MB	\$11.00

* 49	1998	CENT	DOUBLE DENOMINATION SUPER-DUPER DETAILS LAST DIGIT OF DIME NOT VISABLE, COULD BE 1997? ANACS	MS64	MB	\$965.00
* 50	1917	CENT	DOUBLE STRUCK 2nd STRIKE 15% OFF CENTER COIN IS PROBLEM-FREE, PCGS HOLDER HAS A FEW SCUFFS WHICH SHOW IN PHOTO	AU58	MB	\$450.00
51	1914	CENT	10% OFF CENTER EARLY TOUGHER DATE BN	PCGS MS64	MB	\$349.00
52	1915 D	CENT	10% OFF CENTER 1:00 NGC BN	MS62	MB	\$349.00
53	1917 D	CENT	15% OFF CENTER 5:30 NGC BN (LOT OF RED)	MS63	MB	\$395.00
54	1919 D	CENT	15% OFF CENTER 10:00 PCGS	AU55	MB	\$349.00
* 55	1919 S	CENT	45% OFF CENTER 10:00 PCGS	AU58	MB	\$395.00
56	1928 S	CENT	5% OFF CENTER 2:00 NICE COIN PCGS	AU58	MB	\$349.00
57	1940 S	CENT	45% OFF CENTER 8:00 ANACS DETAILS	MS60	MB	\$169.00
58	1947 S	CENT	50% OFF CENTER 10:00 BRN W/LITTLE RED PCGS	MS64	MB	\$249.00
59	1969 S	CENT	80% OFF CENTER 10:30 FUL DATE, MM PCGS RED/BN VERY PRETTY RED,ORANGE,YELLOW, VIOLET TONING, LOOKS 65?	MS62	MB	\$225.00
60	2001	CENT	20% OFF CENTER 7:00 PCGS RED	MS65	MB	\$29.00
61	1965	OTHER	SPEC MINT SET AS ISSUED, CENT NICE DIE CLASH UNDER CHIN	BU	MB	\$15.00
62	1966	OTHER	SPEC MINT SET AS ISSUED, NICKEL STRUCK THRU THICK STRING ON COLLAR & SOME CHEEK	BU	MB	\$9.50
63	1993	OTHER	S PROOF SET AS ISSUED, S ON DIME VERY THIN LIKE TYPE 2 MM DISCOVERY PIECE?	PRF	MB	\$25.00
* 64	1996	\$50	FED RESERVE NOTE (FRN) OFFSET REV GREEN ON OBV LEFT END APROX INCH, DARK 10%	VF	MB	\$75.00
* 65	1996	\$20	F.R.N, MISALIGNED OBV CUTTING ERROREDGE NEXT NOTE OBV RIGHT END PMG GRADED EPQ 65	GEM	MB	\$155.00
* 66	1993	\$20	F.R.N, 3 CONSECITIVE SERIAL NUMBERS WITH 50% OF REVERSE BLANK ON ALL 3 NOTES	GEM	MB	\$395.00
* 67	1934 A	\$20	F.R.N, HAWAII WORLD WAR 2, WITH WHITE GUTTER FOLD REVLOWER LEFT CORNER	AU58	MB	\$395.00
* 68	1999	\$20	F.R.N, NICE WITH GUTTER FOLD TTOP TO BOTTOM ACROSS CENTER OF NOTE	AU	MB	\$69.00
* 69	1985	\$20	F.R.N, HAS MEDIUM DARK OFFSET REV TO OBVERSE ON LEFT END APROX INCH SLANTED	VF	MB	\$45.00
* 70	1977	\$20	F.R.N, MEDIUM DARK OBVERSE OFFSET ON REVERSE	EF	MB	\$145.00
* 71	1974	\$20	F.R.N, 85% OBVERSE OFFSET ON REVERSE MED DARK	AU58	MB	\$135.00
* 72	1950 A	\$10	F.R.N, MISALIGNMENT ERROR, REV HAS BOTTOM OF NEXT NOTE ON TOP OVER 1/4 INCH ALL ACROSS NOTE PMG GRADED EPQ	AU50	MB	\$165.00
* 73	1981	\$10	F.R.N, MED DARK OFFSET REV ON OBVERSE APROX 70%	EF	MB	\$99.00
* 74	1974	\$10	F.R.R.N, BACK TO FRONT OFFSET ACROSS THE TOP MEDIUM DARK	CU	MB	\$49.00
* 75	1976	\$2	F.R.N, SEMI MAJOR SHIFTED DOWN SEALS & SER NUMBERS	AU	MB	\$65.00
76	1957 B	\$1	SILVER CERTIFICATE, MISMATCHED SERIAL NUMBERS, STARTS U37 BOTTOM LEFT, U47 TOP RIGHT PMG GRADED EPQ 66	GEM	MB	\$350.00
77	1935 E	\$1	SILVER CERTIFICATE, MISALIGNED REVERSE EDGE OF NEXT NOTE ON RIGHT END TEAR	GD	MB	\$23.00
* 78	1977 A	\$1	F.R.N, LARGE INTERNAL TEAR AFTER REV PRINT FOLDED TO FRONT AND OBV PRINT SEE PHOTO SUPER NEAT	UNC	MB	\$375.00
* 79	1977 A	\$1	F.R.N, APROX 75% OF LOWER REVERSE IS BLANK NEAT!	AU	MB	\$185.00

* 80	1995	\$1	F.R.N, PERFECTLY PLACED OBSTRUCTION OVER LEFT BLACK SEAL	AU58	MB	\$260.00
* 81	2006	\$1	F.R.N, SERIAL NUMBERS, SEALS, 7 DISTRICT NUMBERS **OFFSET** ON REVERSE V. UNUSUAL	VF	MB	\$165.00
* 82	1995	\$1	F.R.N, 100% LIGHT OBVERSE OFFSET ON REVERSE	FIN	MB	\$89.00
* 83	1977 A	\$1	F.R.N, BLACK INK SMEAR OBVERSE ON PORTRAIT 1 1/4" LONG	CU	MB	\$49.00
84	1977	\$1	F.R.N, BLACK INK SMEAR WASHINGTONS HEAD TO TOP EDGE 1 1/2"	AU	MB	\$48.00
85	2003	\$1	F.R.N, STAR NOTE WITH SMALL GREEN & BLACK INK SMUDGES ON SEAL & SERIAL # LEFT END	UNC	MB	\$32.00
* 86	1921 D	DOLL	SLIGHTLY MISALIGNED OBVERSE CLEANED	EF	MB	\$21.00
87	1899 O	DOLL	MICRO O MINT MARK VAM-4	VG	MB	\$25.00
88	1889	DOLL	VERY STRONG CLASHED DIES OBVERSE & REVERSE	MS64	MB	\$15.00
* 89	1886 O	DOLL	45 DEGREE ROTATED REVERSE CLOCKWISE	GD	MB	\$48.00
* 90	1894 O	DOLL	DEEP LAMINATION OFF EDGE 2:00 TO 3:00 CLEANED TONED	EF	MB	\$39.00
91	1922 D	DOLL	VAM-4 STRONG DOUBLED DIE OBVERSE DESIGNERS INITIALS	AU	MB	\$45.00
92	1922	DOLL	DOUBLED DIE DESIGNERS INITIALS	AU	MB	\$26.00
93	1923	DOLL	RIM CLIP 3:30	UNC	MB	\$24.00
* 94	1922	DOLL	NEAT LAMINATION FLAP OBVERSE 9:30 OVER "L" OF LIBERTY	EF	MB	\$29.00
95	1922 S	DOLL	STRUCK THRU ABOVE DATE TO NECK LOOKS LIKE AN APOSTROPHE	AU	MB	\$25.00
96	1924	DOLL	STRUCK THRU OVER DATE AREA INSIDE RIM WEAK DETAILS OBVERSE	UNC	MB	\$32.00
* 97	1922	DOLL	ROLLED IN SLAG LOOKS LIKE EXTRA RAY	VF	MB	\$21.00
98	N.D.	DOLL	IKE CLAD TYPE 2 PLANCHET	UNC	MB	\$110.00
99	1979 P	DOLL	NICE RIM CUD 2:00 OBVERSE	UNC	MB	\$15.00
* 100	2000	ASE	STRUCK THRU RETAINED GLUE? 3:00 REVERSE SOME GONE TOO	BU	MB	\$32.00
* 101	2002	ASE	LARGE STRUCK THRU CRUD & STRING 2:00 ACROSS LEFT WING & SHIELD	BU	MB	\$39.00
102	1987	ASE	LOW PRESSURE STRIKE WEAK CENTER DETAILS	BU	MB	\$45.00
103	1987	ASE	DIE TRIAL?? WEAK CENTER DETAILS	BU	MB	\$45.00
104	N.D.	DOLL	PRESIDENTIAL TYPE 2 BLANK PLANCHET	BU	MB	\$89.00
* 105	N.D.	DOLL	SAC OR PRESIDENTIAL SMALL PIECE OF CHOPPED WEBBING	BU	MB	\$15.00
* 106	2007 D	DOLL	WASHINGTON \$ REVERSE 20% BROCKAGED BY ANOTHER COIN DURING WAFFLE PROCESS	BU	MB	\$150.00
107	2009 P	DOLL	Z. TAYLOR DROPPED "185" ON EDGE	BU	MB	\$65.00
108	2009 P	DOLL	DROPPED LETTER "RE" ON EDGE + EXTRA STAR AFTER DATE ****SEE LOTS 628-647 FOR PRES \$	BU	MB	\$65.00
109	2009 P	DOLL	DROPPED HAIR ON EDGE OVER MINT MARK	BU	MB	\$25.00
110	N.D.	HALF	TYPE 1 90% SILVER BLANK	BU	MB	\$69.00
111	N.D.	HALF	TYPE 2 90% SILVER PLANCHET	BU	MB	\$55.00
112	VF	HALF	DOUBLED DIE REVERSE I-R-I I I RIM NICKS	VF	MB	\$18.00
113	1917	HALF	RIM CLIP 5:00 ++ STRONG WIDE PARTIAL COLLAR COUPLE SCRATCHES OBV FIELD STILL NEAT	EF	MB	\$199.00
114	1958	HALF	LAMINATION REVERSE 10:00 OVER LARGE AREA OF BELL	FIN	MB	\$5.00
115	1966	HALF	"ASSASSINATION" LAMINATION 11:30 TO 2:00 THRU TOP HEAD STILL ATTACHED FLAP	UNC	MB	\$10.00
116	1964	HALF	ACCENTED HAIR VARIETY	PRF	MB	\$12.00
117	1964	HALF	MAJOR RAGGED STRAIGHT CLIP 3:00 TO 5:30 CHOICE	BU	MB	\$199.00
118	1964	HALF	5% CURVED CLIP 3:30	UNC	MB	\$11.00
* 119	1976	HALF	5% CURVED CLIP 4:00 ++ 5% CURVED CLIP 10:00	UNC	MB	\$35.00

* 120	1983 P	HALF	10% OFF CENTER 9:30	BU	MB	\$79.00
121	1973 D	HALF	UNCENTERED BROADSTRIKE WITH TILTED PARTIAL COLLAR	AU58	MB	\$35.00
122	1967	HALF	WENT THRU UPSET MILL AFTER STRUCK A MODERN RARITY	BU	MB	\$45.00
123	1964 D	HALF	DOUBLED DIE OBVERSE FS-104	UNC	MB	\$19.00
124	1964 D	HALF	DOUBLED DIE OBVERSE UNLISTED	UNC	MB	\$12.00
125	1971 D	HALF	DOUBLED DIE OBVERSE PUP: TRUST	UNC	MB	\$14.00
126	1973 D	HALF	DOUBLED DIE OBVERSE-003, WILES DMR-4 STILL IN MINT SET CELLO	BU	MB	\$45.00
127	1974 D	HALF	DBLED DIE OBVERSE 1-O-V IN MINT SET CELLO	BU	MB	\$39.00
128	2002 P	HALF	NICE LARGE COLLAR CUD 7:00 COLLAR BREAK	BU	MB	\$12.00
129	N.D.	QUAR	TYPE 2 CLAD PLANCHET	UNC	MB	\$3.50
130	1932	QUAR	LAMINATION IN FIELD 4:00	GD	MB	\$2.00
131	1957 D	QUAR	UNCENTERED BRDSTRK WITH TOUCH OF COLLAR	AU	MB	\$125.00
132	1993 P	QUAR	5% MISALIGNED DIE OBV + PARTIAL COLLAR	EF	MB	\$2.50
133	1967	QUAR	STRONG CLASHED DIE OBVERSE + LIGHT REVERSE	SMS	MB	\$45.00
* 134	199x	QUAR	WASHINGTON PRE STATEHOOD, 85% O/C 1:00	BU	MB	\$29.50
135	1983 P	QUAR	15% OFF CENTER 3:00 L;OW MINTAGE DATE	UNC	MB	\$23.00
* 136	1983 P	QUAR	16% OFF CENTER 1:00	BU	MB	\$22.00
137	1996 P	QUAR	LRG UNCENTERED BRDSTRIKE LOOKS 10% O/C	UNC	MB	\$15.00
138	1963 D	QUAR	2% CURVED CLIP 1:30	VF	MB	\$6.50
139	1970 D	QUAR	3% CURVED CLIP 5:30	AU	MB	\$3.00
140	1970 D	QUAR	RIM CLIP 10:30	BU	MB	\$3.50
141	1957	QUAR	TYPE 2 REVERSE FS-25-1957-901	FIN	MB	\$4.50
142	1958	QUAR	TYPE 2 PROOF REVERSE FS-25-1958-901	EF	MB	\$7.50
143	1959	QUAR	TYPE 2 PROOF REVERSE FS-25-1959-901	UNC	MB	\$17.50
144	1960	QUAR	TYPE 2 PROOF REVERSE FS-25-1960-901	BU	MB	\$17.50
145	1961	QUAR	TYPE 2 REVERSE FS-25-1961-901	BU	MB	\$18.00
146	1962	QUAR	TYPE 2 PROOF REVERSE FS-25-1962-901	EF	MB	\$11.00
147	1963	QUAR	TYPE 2 PROOF REVERSE FS-25-1963-901	VF	MB	\$5.50
148	1964	QUAR	TYPE 2 PROOF REVERSE FS-25-1964-901	EF	MB	\$7.00
149	1941 S	QUAR	LARGE "S" FS-25-1941S-501	VF	MB	\$12.50
* 150	1999 P	QUAR	N.J, DBL STRK, 2ND 80% O/C 5:30 UNI REV	BU	MB	\$349.00
* 151	1999 P	QUAR	CT, DOUBLE STRUCK, 2ND 55% OFF CENTER 10:00 UNIFACE REVERSE LATE STAGE DIE	BU	MB	\$399.00
152	1999 P	QUAR	CT, UNCENTERED BROADSTRIKE LOOKS 8% O/C	BU	MB	\$25.00
153	1999 D	QUAR	CT, STRUCK THRU "UNITED STATES"	UNC	MB	\$1.50
154	1999 D	QUAR	PA, STRUCK THRU, NO S IN STATES	BU	MB	\$1.50
* 155	1999 x	QUAR	GA, DBL STRUCK, 2ND 70% O/C 4:00 UNI REV	BU	MB	\$349.00
156	1999 P	QUAR	GA, BROADSTRUCK WITH PARTIAL COLLAR	GEM	MB	\$14.00
157	1999 P	QUAR	GA, WITH UNUSUAL HEAVY POLISH LINES OBVERSE & REVERSE	BU	MB	\$1.50
* 158	(2)000	QUAR	STATES TYPE, 85% OFF CENTER 12:00 DIE STRUCK BOTH SIDES NICE DETAILS	BU	MB	\$99.00
159	2000 x	QUAR	NH, MISSING MINT MARK FILLED DIE	AU	MB	\$5.00
160	2000 P	QUAR	SC, TILTED PARTIAL COLLAR STRIKE	BU	MB	\$14.50
161	2000 x	QUAR	VA, SUPER CLOGGED DIE STRIKE LOTS OF DETAILS MISSING OBV & REV	UNC	MB	\$18.00
162	2003 D	QUAR	AR, BROADSTRUCK, WITH TILTED PART COLLAR	BU	MB	\$21.00
163	2003 P	QUAR	ME, UNCENTERED BROADSTRIKE NO COLLAR	BU	MB	\$32.00
* 164	2003 P	QUAR	IL, UNCENTERED BROADSTRIKE WITH PART COLL	BU	MB	\$21.50
165	2004 D	QUAR	MI, UNCENTERED BROADSTRIKE WITH TILT PARTIAL COLLAR	CHBU	MB	\$24.00
* 166	2005 D	QUAR	KS, ELLIPTICALLY CLIPPED 23mm WIDE NEAT SHAPE	BU	MB	\$230.00
167	2005 D	QUAR	CA, UNCENTERED BROADSTRIKE WITH TILT PARTIAL COLLAR	BU	MB	\$23.00

168	2007 P	QUAR	WY, OBVERSE & REVERSE STRUCK THRU LIKE MOVING HORSE & RIDER	BU	MB	\$2.50
169	2007 D	QUAR	ID, NO "DE" DESIGNERS INITIALS ON EAGLE + REGULAR COIN FOR COMPARISON	BU	MB	\$3.50
170	2007 D	QUAR	ID, 10 COINS LOT OF NO DESIGERS INITIALS	BU	MB	\$29.00
171	2008 P	QUAR	OK, MULTIPLE HEAVY DIE SCRATCHES LOOKS LIKE WIND FROM BIRD	BU	MB	\$2.50
172	2008 P	QUAR	NM, STRUCK THRU OBVERSE LIKE GEORGE BLOWING SMOKE	BU	MB	\$2.00
173	2008 D	QUAR	AZ, STRUCK IN RETAINED MINT GRIME AROUND EDGE REVERSE	BU	MB	\$2.50
174	1953 S	DIME	STRONG CRACKED SKULL DIE CRACK	GEM	MB	\$3.50
175	1964 D	DIME	POINTED 9 VARIETY	AU	MB	\$3.50
176	2001 D	DIME	10 COIN LOT UNCENTERED BROADSTRIKES	AU/UNC	MB	\$24.00
* 177	1935	DIME	ROLLED IN SLAG REVERSE 10mm X 1mm	MS63	MB	\$12.00
178	N.D.	DIME	TYPE 2 CLAD P-LANCHET	UNC	MB	\$2.00
179	199(4)D	DIME	LOW PRESSURE STRIKE VERY WEAK STRIKE 2 COINS SAME DIE	BU	MB	\$110.00
180	1985 P	DIME	VERY WEAKLY STRUCK OBV & REV	UNC	MB	\$35.00
181	1985 D	DIME	FLAT RIM OBVERSE 11:00 TO 5:00	UNC	MB	\$1.50
182	1985 P	DIME	HIGH THICK RIMS	UNC	MB	\$2.50
183	1969	DIME	BROADSTRUCK WITH PARTIAL COLLAR 2 SPOTS OBV, SCRAPE REVERSE	AU	MB	\$4.00
* 184	1996 P	DIME	NICKEL SIZE BROADSTRIKE WITH REEDING COMING OFF REV MULTI STRIKE NO ROTATION	BU	MB	\$32.00
185	1999 P	DIME	UNCENTERED BROADSTRIKE + DIE CRACK ON NOSE + REEDED EDGE=MULTI STRIKE	BU	MB	\$26.00
* 186	1999 P	DIME	FORCED CENTERED BROADSTRIKE + MULTI STRIKE	BU	MB	\$26.00
187	1940 D	DIME	RPM #2	BU	MB	\$25.00
188	1941 S	DIME	RPM #1a FS-10-1941S-501	VG	MB	\$6.00
189	1941 S	DIME	LARGE "S" TRUMPET TAIL S FS-10-1941S-511	FIN	MB	\$17.50
190	1943 S	DIME	RPM #1 FS-10-1943S-501	VF	MB	\$7.50
191	1960 D	DIME	RPM #1	FIN	MB	\$4.50
192	1964 D	DIME	RPM #2	BU	MB	\$11.00
* 193	1966	DIME	35% OFF CENTER 1:00	BU	MB	\$45.00
* 194	1966	DIME	50% OFF CENTER 10:00	BU	MB	\$45.00
* 195	1969 D	DIME	60% OFF CENTER 10:00 GREEN RESIDUE REV	BU	MB	\$28.00
196	1971 D	DIME	40% OFF CENTER 1:00	BU	MB	\$35.00
197	1973	DIME	75% OFF CENTER 11:30	BU	MB	\$35.00
198	1973	DIME	50% OFF CENTER 1:30 REV SPOT	BU	MB	\$29.00
* 199	1973 D	DIME	45% OFF CENTER 11:00	UNC	MB	\$35.00
200	1981 P	DIME	50% OFF CENTER 12:30	BU	MB	\$28.00
201	1986 D	DIME	70% O/C 12:00 DSBS (DIE STRUCK BOTH SIDES	BU	MB	\$26.00
202	1987 D	DIME	45% OFF CENTER 11:30	BU	MB	\$26.00
203	1988 P	DIME	30% OFF CENTER 12:30	BU	MB	\$21.00
* 204	1989 P	DIME	60% OFF CENTER 1:00 DSBS	BU	MB	\$21.00
205	1989 P	DIME	50% OFF CENTER 1:00 DSBS	BU	MB	\$21.00
* 206	1991 D	DIME	50% OFF CENTER 1:30	BU	MB	\$21.00
* 207	1995 D	DIME	55% OFF CENTER 1:00	BU	MB	\$22.00
208	1996 P	DIME	30% OFF CENTER 8:00	BU	MB	\$21.00
209	N.D.	DIME	50% O/C 2:30 WITH 5% CURVED CLIP 1:00	BU	MB	\$18.00
211	N.D.	DIME	70% OFF CENTER 2:00 DSBS	UNC	MB	\$14.00
212	1990 D	DIME	55% OFF CENTER 1:00	BU	MB	\$22.00
213	1964 D	DIME	CUD TOP OF HEAD RDC-64D-1A	AU	MB	\$59.00
214	1957	DIME	3% CURVED CLIP 2:30	VF	MB	\$2.00
215	1959	DIME	1% CLIPS AT 10:00 & 12:30	BU	MB	\$4.00
216	1959	DIME	5% CURVED CLIP 11:00	AU	MB	\$2.50
* 217	1964 D	DIME	NEAT RAGGED EDGE CLIP 10:30 TO 12:00 + 2:00	BU	MB	\$8.50

ALSO							
218	1964 D	DIME	3% CURVED CLIP 9:30 + RIM CLIP 12:30	VF	MB	\$3.50	
219	1961	DIME	2% CURVED CLIP 2:00 + RIM CLIP 4:30	AU	MB	\$2.50	
220	1964 D	DIME	3% CURVED CLIP 10:00 + RIM CLIP 7:30	UNC	MB	\$2.50	
221	1964 D	DIME	3% CURVED CLIP 7:30	UNC	MB	\$2.50	
222	1964 D	DIME	5% CURVED CLIP 1:30 + 5% CURVED CLIP 4:00	UNC	MB	\$11.00	
*	223	1965	DIME	20% CURVED CLIP 10:00	AU	MB	\$9.00
	224	1977	DIME	8% CURVED CLIP 8:00	AU	MB	\$2.00
	225	1966	DIME	REVERSE STRUCK THRU HEAVY GREASE	AU	MB	\$3.50
*	226	1869	NICK	20% OFF CENTER 8:00 PART OF DATE SHOWS NICE TYPE COIN	VG	MB	\$599.00
*	227	N.D.	NICK	SHIELD, REVERSE APROX 35% LAMINATED OFF AT 5:00	AG	MB	\$22.00
	228	1911	NICK	LAMINATION ACROSS HAIR BUN	GD	MB	\$2.50
*	229	1906	NICK	NICE OBVERSE CUD 10:00 TO 1:00 OBVERSE UNLISTED	VG	MB	\$75.00
	230	1883 NC	NICK	DISK CLIP 10:00 ++ DIE CRACKS AT DATE + 7:30 TO STAR TO BUST	EF	MB	\$23.00
	231	1914 S	NICK	RAGGED CLIP FILLED TO RIM RARE DATE	FIN	MB	\$45.00
	232	1935	NICK	DOUBLED DIE REV I-R-V FS-05-1935-801	FN+	MB	\$110.00
	233	1914	NICK	BAD METAL MIX + LAMINATION OBV	VG	MB	\$2.00
	234	1915 D	NICK	ACID RAISED DATE WITH LAM REV GOOD DATE	AG	MB	\$4.00
	235	1918 S	NICK	LAMINATION REVERSE 12:00 TO 3:30	GD	MB	\$10.00
	236	1920	NICK	LAMINATION OBVERSE 9:30 TO MID HEAD	GD	MB	\$2.00
	237	1921 S	NICK	LAM CRACKS ACROSS HEAD OBV RARE DATE	VG	MB	\$60.00
	238	1923 S	NICK	LAMINATION ACROSS OBVERSE 4:00 TO 11:00	GD	MB	\$2.00
	239	1923 S	NICK	LAMINATIONS ACROSS TOP HEAD OBVERSE	GD	MB	\$5.00
	240	1927 S	NICK	LAMINATION MINOR REVERSE	GD	MB	\$1.50
*	241	1935	NICK	LAMINATION LARGE REVERSE 7:00 TO 11:00 DEEP	VG	MB	\$3.00
	242	1935	NICK	LAMINATION OBVERSE ACROSS 3:00 TO 8:00	FIN	MB	\$2.00
	243	1936	NICK	LAMINATION PEEL 3:30 TO 7:30	VG	MB	\$2.50
*	244	1941	NICK	STRUCK ON STRUCK CENT, LINCOLNS BEARED ON JEFFERSONS CHEEK & REV WHEAT STALK ABOVE DOME. POSSIBLY CLEANED LONG AGO? STILL ATTRACTIVE. SUPER RARE ON WHEAT CENT	EF/AU	MB	\$1,450.00
*	245	1964 D	NICK	STRUCK ON CENT PLANCHET LIGHTLY CLEANED	UNC	MB	\$245.00
*	246	1976 D	NICK	STRUCK ON CENT PLANCHET BICENTENNIAL	UNC	MB	\$350.00
*	247	1981 D	NICK	STRUCK ON CENT PLANCHET RED/BRN	AU	MB	\$225.00
*	248	1971 D	NICK	DOUBLE STRUCK, 2ND 90% O/C 11:00 UNI REV	BU	MB	\$35.00
	249	1979	NICK	5% MISALIGNED DIE OBVERSE	CHAU	MB	\$2.00
	250	1948 S	NICK	DEEP STRUCK THRU REV 6:30 OVER ATE OF STATES	FIN	MB	\$1.50
*	251	1999 P	NICK	HUGE CENTERED BROADSTRIKE WITH 50% INDENT 10:00 OBVERSE	BU	MB	\$65.00
	252	1970 S	NICK	STRUCK THRU 1:00 REVERSE	EF	MB	\$1.50
	253	1941	NICK	LAMINATION STREAK OBVERSE 10:00 TO 6:00	FIN	MB	\$0.50
	254	1944 P	NICK	MULTI LAMINATIONS 6:00 TO 12:00	FIN	MB	\$2.50
	255	1945 P	NICK	3% CURVED CLIP 8:00 + LAMINATION OUT 10:00	FIN	MB	\$3.50
	256	1945 P	NICK	LAMINATIONS OBVERSE 3:00 TOWARDS 7:00	VF	MB	\$2.50
	257	1953	NICK	LAM REVERSE OR MAY BE STRUCK THRU 11:00	BU	MB	\$2.50
	258	1954 S	NICK	LAMINATION ACROSS BUILDING 10:00 TO 1:00	BU	MB	\$2.50
	259	1958 D	NICK	LAMINATION REVERSE 4:00 TO 10:30	FIN	MB	\$0.50
	260	1959 D	NICK	LKAMINATION STREAK 2:30 TO 7:00 REVERSE	EF	MB	\$1.00
	261	1940	NICK	RIM CLIP 2:30	VF	MB	\$2.00
	262	1944 P	NICK	2% CURVED CLIP 2:00	GD	MB	\$2.50
*	263	1945 P	NICK	STRAIGHT CLIP 8:00 TO 10:00	VF	MB	\$7.50





6



1



1



15



16



26



27



30



31



33



38



38



36



39





64



66



68



72



65



73



71



70



69



78



78



74



75



79



67



80



81



82



84



86



89



90



94



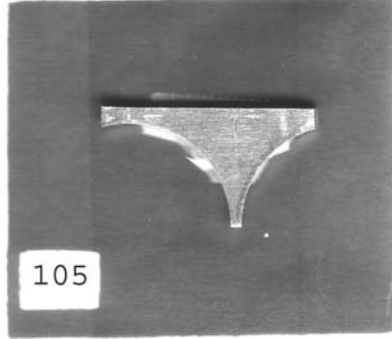
97



100



101



105

SUB

SCRIPTION FOR THE YEAR 2010  
DON'T MISS ANY OF THESE SALES!  
SEMI-MONTHLY ERROR CATALOGS PUBLISHED FOR THE PAST 25 YEARS!

THE SUBSCRIPTION PRICE IS \$8.00 FOR SIX CATALOGS ON A SEMI-MONTHLY BASIS. COST OF PRINTING AND MAILING THE LAST CATALOG WAS \$2.06 EACH. WE DON'T MIND SENDING CATALOGS TO COLLECTORS OF CATALOGS IF YOU SHARE IN THE COST OF THE CATALOGS.

WE WILL AUTOMATICALLY BILL \$8.00 SUBSCRIPTION DUES TO ALL WINNING BIDERS WHO HAVE NOT YET PAID UNLESS OTHERWISE PAID OR INFORMED.

WE HAVE A FULL SERVICE COIN & STAMP STORE THAT IS LOCATED IN HILLDALE MALL IN MADISON, WI. PLEASE FEEL FREE TO STOP BY IF YOU ARE IN TOWN.

WE ARE ALSO ENTHUSIASTIC BUYERS OF ALL ERRORS AS WELL AS NORMAL COINS, STAMPS AND COLLECTIBLE RED/BLUE BOOKS!

PLEASE VISIT OUR WEB SITE AT [www.Jimscoins.com](http://www.Jimscoins.com) MANY OF THE PHOTOS IN THE WEB SITE VERSION ARE \*FULL COLOR\*.

NEW PROGRAM: FREE CONECA MEMBERSHIP UPON REQUEST FOR NEW MEMBERS WITH WINNING BIDS TOTALLING \$50 OR MORE.

CONSIGNORS: GETTING TOUGHER TO FIND ERRORS TO FILL THE AUCTIONS. IF YOU HAVE SOME TO SELL OR CONSIGN, PLEASE LET US KNOW. TERMS ARE 15% COMMISSION, YOU SET THE MINIMUM BID AND NO CHARGE IF THE COIN DOES NOT SELL. ALSO BID GENEROUSLY SO WE CAN AFFORD TO BUY SOME MORE. HEH-HEH. -LEN & JIM

NOTES FOR J-38: LAST SALE WAS A TREMENDOUS SUCCESS, THANKS TO ALL WHO PARTICIPATED AND WELCOME NEW BIDDERS AND SUBSCRIBERS! THIS ECONOMY IS BRINGING OUT SOME GOOD ERRORS, AND SOME STILL MUST BE MAKING MONEY, BECAUSE THEY ARE SELLING TOO! BY BIDDING IN THIS AUCTION YOU ARE HELPING TO CREATE OR SAVE TWO JOBS FOR LEN & I. THANKS AGAIN! -LEN & JIM

NAME \_\_\_\_\_

ADDRESS \_\_\_\_\_

CITY \_\_\_\_\_ STATE \_\_\_\_\_ ZIP \_\_\_\_\_

PHONE (OPTIONAL) \_\_\_\_\_

YOUR ADDRESS LABEL HAS A YEAR ON IT SO YOU WILL KNOW WHEN YOUR SUBSCRIPTION EXPIRES.

THANKS AGAIN TO ALL OF YOU! -LEN & JIM







106



117



119



120



597



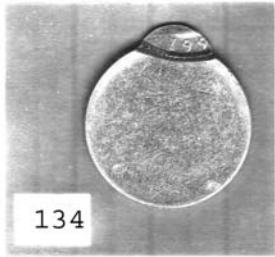
601



610



620



134



136



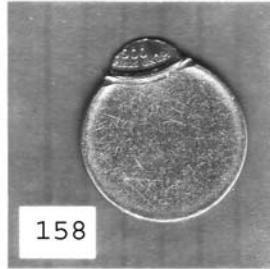
150



151



155



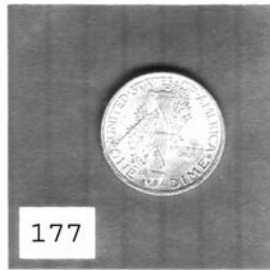
158



164



166



177



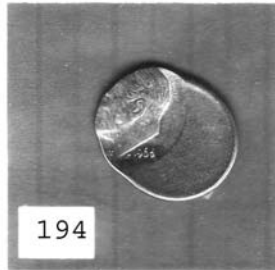
184



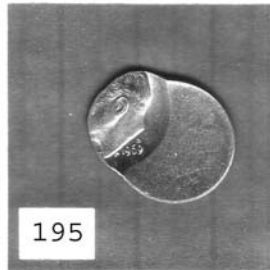
186



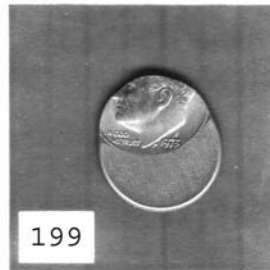
193



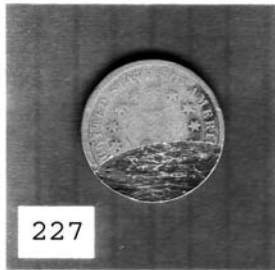
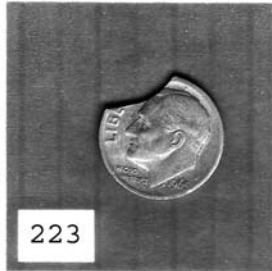
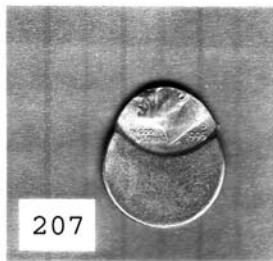
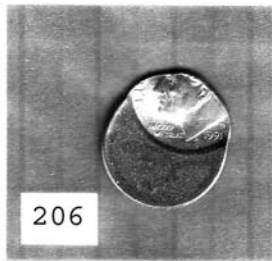
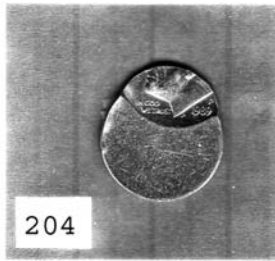
194

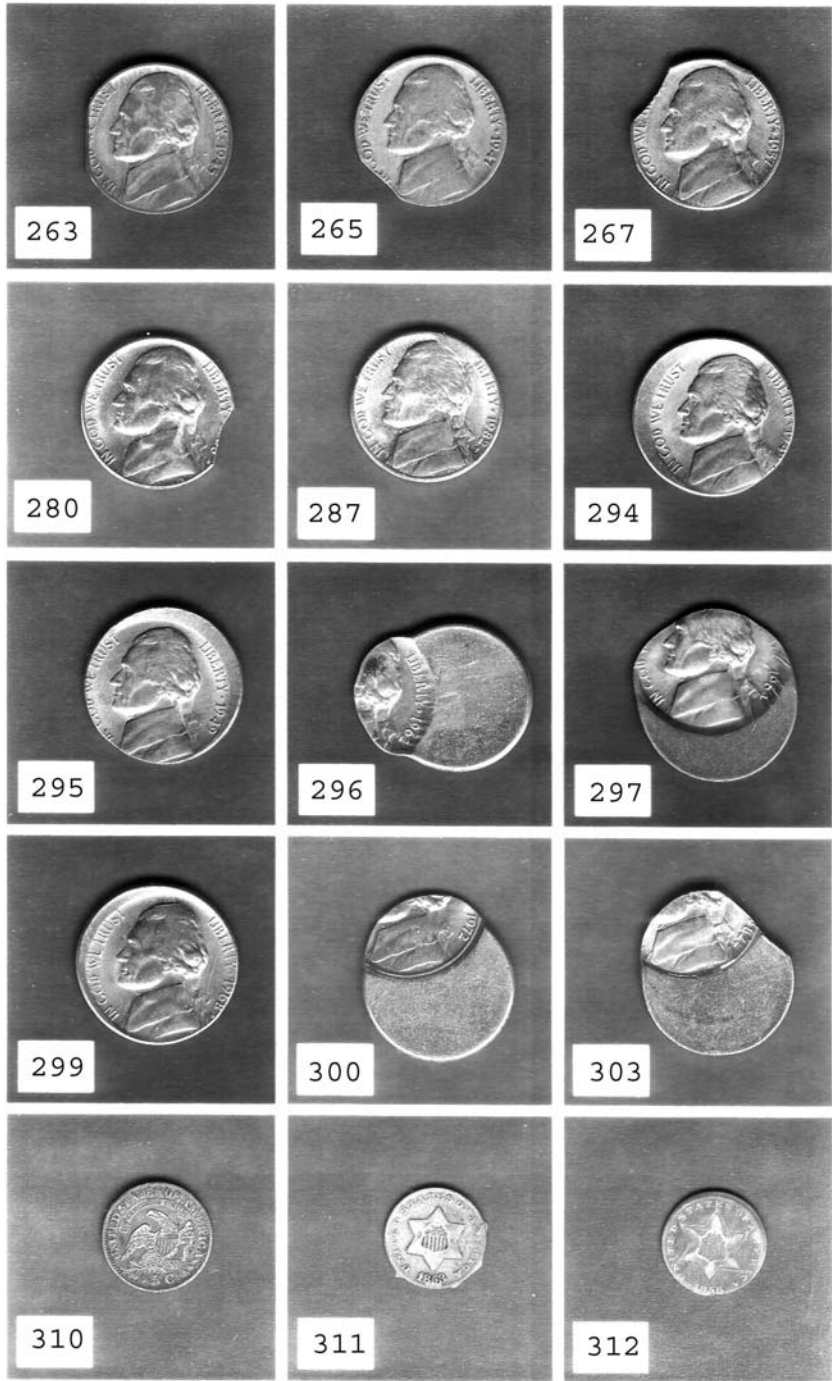


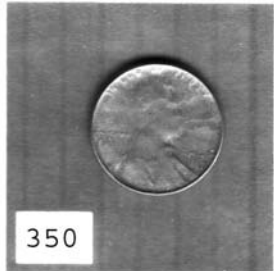
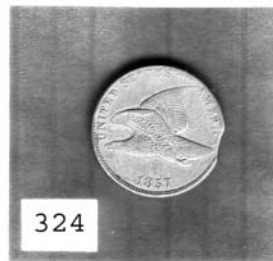
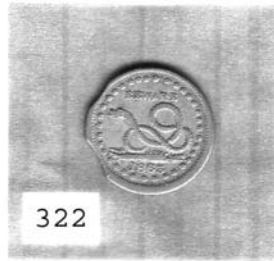
195

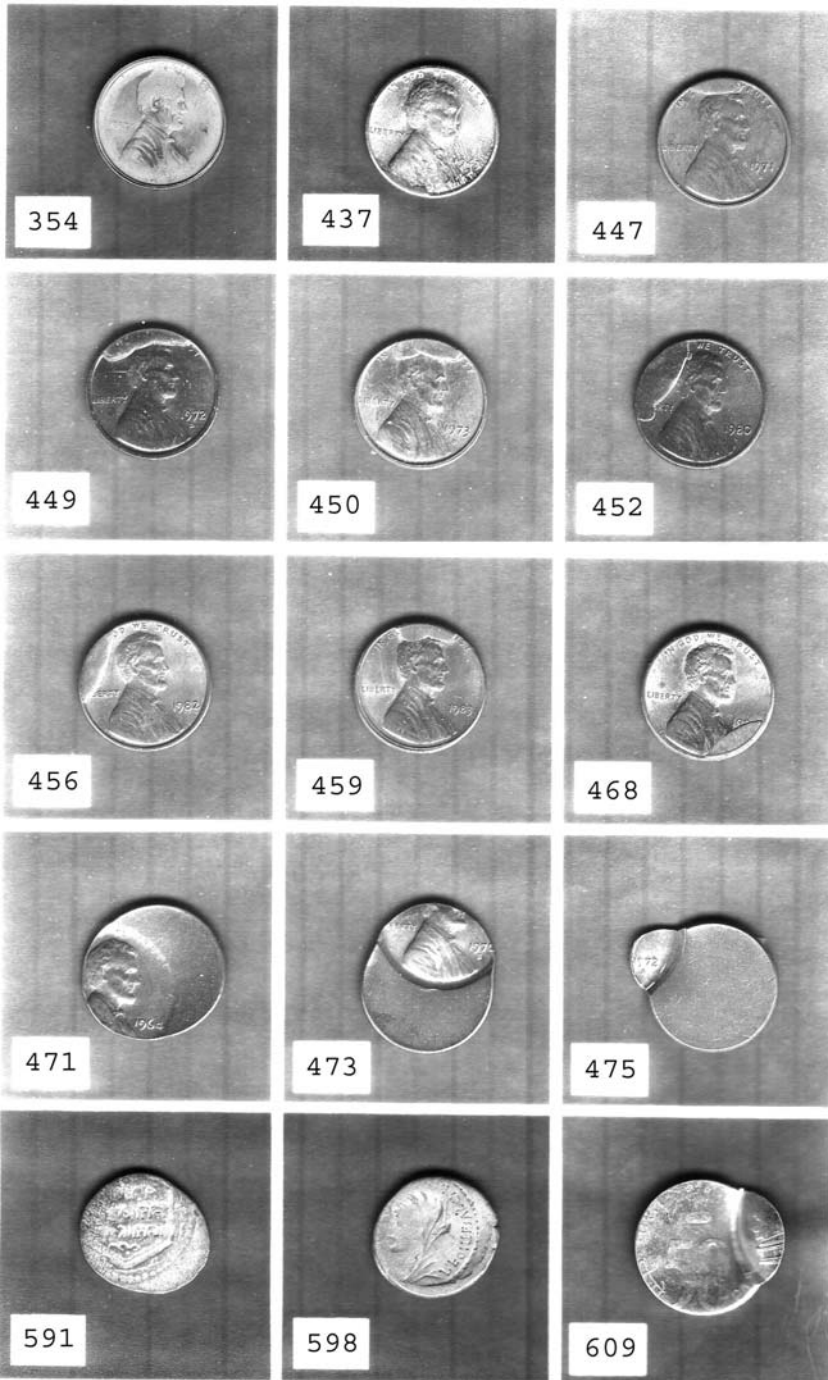


199









264	1945 P	NICK	RIM CLIP 4:00		VF	MB	\$1.50
*	265	1947	NICK	3% CURVED CLIP 7:30 SCRATCH REVERSE	FIN	MB	\$2.50
	266	1954 S	NICK	3% CURVED CLIP 10:30	VF	MB	\$3.50
*	267	1957 D	NICK	RIM CLIP 1:00 ++ 5% CURVED CLIP 10:00	EF	MB	\$4.50
	268	1958 D	NICK	2% CURVED CLIP 5:30 + 3% CURVED CLIP 11:30	VF	MB	\$6.00
	269	1960	NICK	RIM CLIPS AT 12:00 & 7:00	UNC	MB	\$3.50
	270	1960	NICK	RIM CLIP 6:00	VF	MB	\$2.00
	271	1960	NICK	3% CURVED CLIP 8:30	AU	MB	\$2.50
	272	1961	NICK	4% CLIP 5:00 + LAM IN FIELD FRONT OF FACE	EF	MB	\$2.50
	273	1962 D	NICK	2 RIM CLIPS AT 4:30 & 10:30	EF	MB	\$2.00
	274	1964	NICK	DISK CLIP 5:00 + RIM CLIP 11:00	EF	MB	\$2.50
	275	1964 D	NICK	RIM CLIP 6:30	AU	MB	\$2.00
	276	1964 D	NICK	3% CURVED CLIP 9:30	EF	MB	\$2.50
	277	1964 D	NICK	DOUBLE RIM CLIPS	AU	MB	\$2.50
	278	1964(D)	NICK	5% CURVED CLIP 2:30 + RIM CLIP 5:00	EF	MB	\$2.50
	279	1966	NICK	7% CURVED CLIP 9:00 + RIM CLIP 11:30	BU	MB	\$4.50
*	280	(1968)S	NICK	10% CURVED CLIP 3:30	BU	MB	\$3.50
	281	1972	NICK	5% CURVED CLIP 1:00	UNC	MB	\$2.50
	282	1974	NICK	2% CURVED CLIP 11:00	AU	MB	\$2.50
	283	(1988P)	NICK	7% CLIP 4:00 EXTREMELY WORN DIE OBVERSE	AU	MB	\$3.50
	284	1940 S	NICK	CUD OBVERSE 5:30 JNC-40S-2 SM SCRATCH	FIN	MB	\$8.00
	285	1941 P	NICK	CUD OBVERSE 5:30 JNC-41P-1	EF+	MB	\$8.00
	286	1962 D	NICK	CUD OBVERSE 5:00 JNC-62D-1	FIN	MB	\$4.00
*	287	1982 P	NICK	CUD OBVERSE 1:00 JNC-82P-6	BU	MB	\$5.00
	288	1983 P	NICK	CUD OBVERSE 12:30 JNC-83P-2B	BU	MB	\$8.00
	289	1983 P	NICK	CUD OBVERSE 9:30 JNC-83P-3	BU	MB	\$4.00
	290	1983 P	NICK	CUD OBVERSE 10:00 JNC-83P-6	BU	MB	\$5.00
	291	1983 P	NICK	CUD OBVERSE 5:00 JNC-83P-8	FIN	MB	\$5.00
	292	1987 P	NICK	CUD OBVERSE 5:00 JNC-83P-1	FIN	MB	\$4.00
	293	1989 P	NICK	FINNED RIM OBVERSE	AU	MB	\$1.00
*	294	1949 D	NICK	10% OFF CENTER 3:00	CHAU	MB	\$245.00
*	295	1949 S	NICK	10% OFF CENTER 8:00	CHAU	MB	\$245.00
*	296	1962 D	NICK	60% OFF CENTER 9:00 FULL DATE & MINT MARK	UNC	MB	\$139.00
*	297	1964	NICK	35% OFF CENTER 10:30	BU	MB	\$65.00
	298	1964	NICK	80% O/C 8:00 DSBS FULL DATE & MM AREA	BU	MB	\$55.00
*	299	1968 S	NICK	5% OFF CENTER 4:00 LITE REVERSE	AU	MB	\$120.00
*	300	1972	NICK	55% OFF CENTER 11:00	BU	MB	\$45.00
	301	1973	NICK	80% OFF CENTER 9:00	BU	MB	\$38.00
	302	1975	NICK	15% OFF CENTER 10:00 MOST OF 5 STEPS	BU	MB	\$19.00
*	303	X982 P	NICK	60% O/C WITH STRAIGHT CLIP	BU	MB	\$35.00
	304	N.D.	NICK	45% O/C 4:00 + RIM CLIP ON BLANK AREA 10:00	BU	MB	\$15.00
	305	N.D.	NICK	40% OFF CENTER 1:30	BU	MB	\$14.00
	306	N.D.	NICK	70% OFF CENTER 2:00 DSBS	BU	MB	\$14.00
	307	N.D. P	NICK	75% OFF CENTER 12:00	BU	MB	\$14.00
	308	N.D.	NICK	80% OFF CENTER 6:00 DSBS	BU	MB	\$8.50
	309	N.D.	NICK	85% OFF CENTER 9:00 DSBS	UNC	MB	\$14.00
*	310	1832	H10c	NICE RETAINED CUD REVERSE 8:30 TO 11:00 UNLISTED? CHOICE COIN	EF	MB	\$160.00
*	311	1853	SIL3c	CUD OBVERSE UNDER TO DATE + CRACK THRU PLANCHET 2:30 TCSC-1853-2A	FIN	MB	\$99.00
*	312	1856	SIL3c	5% OFF CENTER /UNCENTERD BROADSTRUCK SELDOM SEEN ERROR COIN	VF	MB	\$325.00
*	313	1865	NIK3c	35% OFF CENTER 12:00 SCARCE ERROR	VF	MB	\$399.00
	314	1865	NIK3c	LARGE ALLIGATOR DIE BREAK ON FIRST PILLAR REVERSE	VG	MB	\$15.00
	315	1881	NIK3c	RIM CLIP 8:30	EF	MB	\$35.00
	316	1866	NIK3c	DIE CRACKS & CLASHED DIE	GD	MB	\$3.00

317	1866	NIK3c	DEEP LAMINATION 3:00 REVERSE	FIN	MB	\$11.00
318	N.D.	2CENT	STRUCK THRU GREASE IN DATE AREA	FIN	MB	\$16.00
319	1805	1/2C	DOUBLE STRUCK ON PROFILE, + 45 DEGREE ROTATION NEAT LITE OBV SCRATCH	GD	MB	\$220.00
320	N.D.	CENT	TYPE 2 LARGE CENT PLANCHET	CIRC	MB	\$145.00
321	1814	CENT	10% MISALIGNED DIE REVERSE TOWARDS 1:00 + TAPERED RIM CLIP REVERSE?	AG	MB	\$89.00
*	322	1863	OTHER CIVIL WAR TOKEN, 5% CURVE CLIP 10:30 + 3% C.CLIP 8:00, OBV:JACKON, REV:SNAKE NEAT	CHVF	MB	\$49.00
	323	(1863)	OTHER CIVIL WAR TOKEN, SHIP MONITOR WITH CURVED CLIP 1:00	EF	MB	\$15.00
*	324	1857	CENT 3% CURVED CLIP 3:00	VF	MB	\$75.00
	325	1858SL	CENT LAMINATION FLAP ATTACHED 3:00 TO 4:00 CLAMSHELL LIKE	VG	MB	\$42.00
	326	1858SL	CENT RIM CUDS 5:00 TO 9:00 REVERSE	VF	MB	\$29.50
*	327	1863	CENT LARGE UNCENTERED BROADSTRIKE WITH NICE PRE CUD DIE CRACK 3:00 REVERSE	GD	MB	\$110.00
	328	1863	CENT CLAMSHELL SPLIT PLANCHET APROX 50% NEAT!!	GD+	MB	\$125.00
	329	N.D.	CENT TYPE 2 PLANCHET REALLY OLD INDIAN??	CIRC	MB	\$5.00
	330	1897	CENT LAMINATIONS REVERSE THRU CENTER	AU50	MB	\$3.00
*	331	1896	CENT 18% O/C 7:00 VERY NICE RED/BRN ORIGINAL COLOR	MS65	MB	\$235.00
	332	1897	CENT BROADSTRUCK UNCENTERED	VG	MB	\$50.00
	333	1900	CENT 5% CURVED CLIP 2:00	FIN	MB	\$6.00
*	334	1907	CENT 5% CURVED CLIP 4:00 & 10:00	VF	MB	\$45.00
*	335	1980 D	CENT STRUCK ON CLAD DIME PLANCHET	BU	MB	\$285.00
*	336	1963	CENT STRUCK ON SILVER DIME PLANCHET LIGHTLY CLEANED	AU	MB	\$495.00
*	337	1987	CENT FOLDOVER STRIKE, STRUCK FLAT LOOKS LIKE AN BU ELLIPTICAL STRIKE		MB	\$350.00
	338	N.D.	CENT TYPE 1 COPPER BLANK WITH 30% CURVED CLIP + UNC 2 RIM CLIPS		MB	\$39.00
	339	N.D.	CENT TYPE 1 COPPER BLANK SPLIT THRU CENTER, HALF PLANCHET WITH STIRATIONS 23.4 GRAINS	UNC	MB	\$25.00
	340	N.D.	CENT TYPE 2 COPP BLANK WITH 10%+ STRAIGHT CLIP	UNC	MB	\$35.00
	341	N.D	CENT TYPE 2 ZINC PLANCHET	UNC	MB	\$0.50
	342	N.D.	CENT 3 3/4 x 3 INCH PUNCHED STEEL WEBBING, ORIGINAL 15+ HOLES	UNC	MB	\$29.00
	343	N.D.	CENT 3 3/4 x 3 INCH PUNCHED STEEL STRIP REPROCESSED TO ORIGINAL COLOR	UNC	MB	\$29.00
	344	N.D.	CENT 3 3/4 x 4 INCH PUNCHED STEEL STRIP REPROCESSED TO ORIGINAL COLOR	UNC	MB	\$33.00
*	345	N.D.	CENT OBVERSE BROCKAGE & COUNTER BROCKAGE BY UNC CAPPED DIE WOWSER!!		MB	\$95.00
	346	1971	CENT 5% INDENT 12:30 & BROADSTRUCK	BU	MB	\$9.50
	347	1983	CENT BUBBLED SURFACES & BRASS COLORED PLATING	UNC	MB	\$4.00
	348	1982 D	CENT STRUCK ON UNPLATED PLANCHET FEW DARK SPOTS	AU	MB	\$25.00
	349	1986 D	CENT PLATING LAMINATED OFF IN FLAKES + 20% REVERSE UNPLATED AROUND EDGE	UNC	MB	\$18.00
*	350	(1968D)	CENT STRUCK WITH CAPPED DIE	BU	MB	\$19.00
	351	1982	CENT STRUCK WITH LATE STAGE CAPPED DIE SEE MOST DETAILS BUT BLURRED	BU	MB	\$22.00
	352	N.D.	CENT STRUCK THRU LATE STAGE CAPPED DIE MOST DETAILS OBV	UNC	MB	\$19.00
*	353	N.D.	CENT OBVERSE STRUCK THRU MID STATE CAPPED DIE ALLMOST READABLE DATE	UNC	MB	\$22.00
*	354	N.D.	CENT STRUCK THRU HEAVY GREASE OBV & REV NICE EXAMPLE	BU	MB	\$6.00



355	1897	CENT	PARTIAL FILLED DATE 1- - 7	GD	MB	\$2.00
356	N.D.	CENT	ZINC, FILLED DIE OVER DATE	UNC	MB	\$0.50
357	1944	CENT	TILTED PARTIAL COLLAR	BU	MB	\$8.00
358	1945	CENT	LEVEL PARTIAL COLLAR	BU	MB	\$8.00
359	1972 D	CENT	PARTIAL COLLAR, TILTED	UNC	MB	\$2.00
360	1983	CENT	TILTED PARTIAL COLLAR	BU	MB	\$1.50
361	1992 S	CENT	LONG BUBBLES IN SURFACES, LIKE A "RAY GUN" FROM LINCOLN EYES	PRF	MB	\$4.00
362	1924 D	CENT	PARTIAL COLLAR WITH HIGH FLANGED RIM OBVERSE RARER DATE	VG	MB	\$0.00
363	1999	CENT	FLANGED PARTIAL COLLAR HIGH OBVERSE RIM	UNC	MB	\$4.00
364	1970 D	CENT	2% MISALIGNED OBVERSE	AU	MB	\$0.50
365	1968 D	CENT	OBVERSE MISALIGNED DIE 5% SPOT OBVERSE	UNC	MB	\$0.50
*	366	1958 D	DBL STRUCK, 2ND STRIKE 65% O/C 7:00, PCGS SAYS 2ND STRIKE COUNTERFEIT, LOOKS GOOD	BU	MB	\$125.00
367	1983	CENT	DOUBLE STRUCK, 2ND 85% O/C 6:00 UNI REV	UNC	MB	\$15.00
368	1993	CENT	DBL STRK, 2ND 85% O/C 7:00 + 2 FULL DATES UNI	BU	MB	\$42.00
*	369	1995	DOUBLE STRUCK, 2ND 80% O/C 2:00 UNI REV	BU	MB	\$25.00
370	2004 D	CENT	DBL STRK, 2ND 85% O/C 1:30 UNI OBV TOUGH DT	BU	MB	\$210.00
*	371	N.D.	2 STRIKES 70% & 75% O/C OBVERSE BROCKAGED OF REVERSE + 3RD STRIKE 95% DSBS	BU	NB	\$95.00
372	2002 S	CENT	PROOF HANGING COPPER ON RIM	PRF	MB	\$9.00
373	1972	CENT	UNCENTERED BROADSTRIKE LOOKS 10% O/C	UNC	MB	\$8.00
374	1989	CENT	BROADSTRUCK WITH PARTIAL COLLAR VERY HIGH RIMS	UNC	MB	\$2.50
375	1993	CENT	UNCENTERED BROADSTRIKE	BU	MB	\$2.00
376	2000	CENT	VERY LARGE CUPPED BROADSTRIKE + MULTI STRIKES VISABLE REVERSE	UNC	MB	\$39.00
377	2003	CENT	UNCENTERED BROADSTRIKE	UNC	MB	\$3.50
378	N.D.	CENT	ZINC, OFF CENTER FRAGMENT SHOWS "IN GOD" + BACK OF HEAD OBV	BU	MB	\$85.00
379	1955	CENT	POORMANS DOUBLED DIE 1955/5	BU	MB	\$0.95
380	1998	CENT	WADE AM REVERSE	BU	MB	\$5.00
381	1914	CENT	MULTI LAMINATIONS REVERSE	GD	MB	\$3.50
382	1916	CENT	LAMINATION PEEL 2:00 TO 5:00	VG	MB	\$0.50
383	1919	CENT	LARGE LAMINATION PEEL 1:30 TO 4:00 TO EDGE	VG	MB	\$2.00
384	1919	CENT	DEEP & WIDE LAM 12:00 TO 6:00 ON HEAD & BODY FIN	MB	MB	\$3.50
385	1920	CENT	CRACKED PLANCHET EDGE 8:00	FIN	MB	\$2.50
386	1920	CENT	DOUBLE LAM PEEL REVERSE 1:30-8:00 + 3:00 -7:00 FIN	MB	MB	\$1.50
387	1921 S	CENT	LAMINATION ON LINCOLN OBVERSE	VG	MB	\$2.00
388	1921 S	CENT	LAM PEEL 2:00 TO 5:00 NEAT TO EDGE 3:00	VG	MB	\$2.50
389	1924	CENT	LAMINATION OBVERSE BASE OF BUST CLEANED	AU	MB	\$4.00
390	1924	CENT	FILLED DIE 10:00 REVERSE	FIN	MB	\$0.50
391	1924	CENT	LARGE LAM PEEL 12:30 TO 5:00 ACROSS FACE	VF	MB	\$1.50
392	1930	CENT	LARGE LAMINATION PEEL 2:00 TO 4:00	FIN	MB	\$1.50
393	1936	CENT	LARGE LAM PEEL 10:00 ON NECK MAJOR	FIN	MB	\$1.50
394	1937 D	CENT	LAMINATION IN FIELD 3:00	VG	MB	\$1.00
395	1940 D	CENT	LAMINATION STREAK 5 TO 10:30 OBVERSE	VF	MB	\$0.75
396	1942 S	CENT	LAMINATION REVERSE 10:00 12:00	VF	MB	\$0.50
397	1944 D	CENT	DEEP STRUCK THRU ON CHEST	EF	MB	\$1.00
398	1944 S	CENT	LAMINATION CRACKS AT DATE	FIN	MB	\$1.50
399	1946	CENT	SMALL LAMINATION OBVERSE & REVERSE	BU	MB	\$2.00
400	1946 D	CENT	LARGE LAM PEEL FIELD 2:30 FOLDED OVER	VF	MB	\$1.50
401	1948 S	CENT	LAMINATION 2:00 ACROSS FACE	VF	MB	\$0.50
402	1950 D	CENT	LAMINATION ACROSS LIBERTY AND SHOULDER	VF	MB	\$0.50
403	1952 S	CENT	LAMINATION 1:30 TO AROUND EYE	VF	MB	\$0.50
404	1955	CENT	LAMINATION 9:00 REVERSE ON WHEAT STALK	BU	MB	\$0.50
405	1955 D	CENT	FILLED 95 DIE BREAKS	UNC	MB	\$1.50

406	1957 D	CENT	LARGE LAMINATION CRACKS 10:00 OVER CHIN	FIN	MB	\$1.50
407	1958 D	CENT	FOLDED OVER LAMINATION FLAP OBVERSE	EF	MB	\$4.00
408	1960 D	CENT	SMALL DATE, LAMINATION AT DATE	BU	MB	\$0.50
409	1967	CENT	LAMINATION CRACKS & FLAPS OBVERSE	EF	MB	\$1.00
410	1970 S	CENT	LAMINATION LIKE CUD AT DATE AREA WOW	PRF	MB	\$10.00
411	1971 D	CENT	LAM FLAKE ATTACHED AT STEPS REV LG ONE	AU	MB	\$4.50
412	1988	CENT	ATTACHED FLAKE LAMINATION 8:00 OBVERSE	BU	MB	\$3.00
413	1991	CENT	LAMINATION IN FIELD OBVERSE 2:00	BU	MB	\$5.00
414	1992 D	CENT	SMALL LAMINATION EDGE 3:30	BU	MB	\$0.50
415	ASST	CENT	LOT OF 26 COINS WITH LAM ALL DIFFERN DATES OR MINT MARKS DATES FROM 1914 TO 1957 D	CIRC	MB	\$27.50
416	1914 S	CENT	2% CURVED CLIP 7:00	VG	MB	\$35.00
417	1922 D	CENT	RIM CLIP 1:00	VG	MB	\$25.00
418	1940	CENT	RIM CLIP 9:30	VF	MB	\$0.75
419	1941	CENT	RIM CLIPS AT 4:00 & 7:00 SPOT OBVERSE	VF	MB	\$2.00
420	1943	CENT	DISK CLIP 3:30	UNC	MB	\$6.00
421	1944	CENT	5% CLIP 5:00 + DEEP LAMINATION 3:00 TO 10:00	FIN	MB	\$12.00
422	1944 S	CENT	RIM CLIP 1:00 RED/BROWN	UNC	MB	\$6.00
423	1945 S	CENT	RIM CLIP 5:30	BU	MB	\$4.50
424	1960	CENT	SMALL DATE, 5% CLIP 7:00, LOOKS LIKE DBL DATE	UNC	MB	\$14.00
425	1960	CENT	LARGE DATE, 5% CURVED CLIP 1:00	BU	MB	\$2.50
426	1964 D	CENT	10% CURVED CLIP 10:30	AU	MB	\$2.00
427	1965	CENT	5% CURVED CLIP 5:00 ++ RIM CLIP 2:00	BU	MB	\$4.00
428	1969 S	CENT	3% CURVED CLIP 7:00	UNC	MB	\$3.50
429	1970 S	CENT	5% CLIP 4:00 ++ RIM CLIPS AT 11:00 & 1:00	UNC	MB	\$5.00
430	1972	CENT	3% CURVED CLIP 3.30 RED/BRN	BU	MB	\$1.50
431	1975	CENT	RIM CLIP 2:00 SPOT ON NECK	BU	MB	\$1.50
432	1983	CENT	5% CURVED CLIP 2:00 + 2%CLIP 10:00 REV STAINS	UNC	MB	\$4.50
433	1972	CENT	MACHINE DOUBLING OF 1972	AU	MB	\$0.50
434	1972 D	CENT	PARTIALLY FILLED DIE 1:30 TO 3:30	EF	MB	\$1.50
435	2000	CENT	FILLED DIE ON DATE & LIBERTY	UNC	MB	\$1.50
436	1916	CENT	CUD OBVERSE 7:00 LC-16-2 SCRATCH OBV	VG	MB	\$22.00
* 437	1943	CENT	CUD OBVERSE 7:00 LC-43-15	BU	MB	\$8.00
438	1943 S	CENT	CUD OBVERSE 7:00 LC-43S-13	VF	MB	\$9.00
439	1944	CENT	CUD OBVERSE 7:00 LC-44-6	VF	MB	\$10.00
440	1946	CENT	CUD REVERSE 4:00 LC-46-3RB	FN+	6	\$0.00
441	1947	CENT	CUD OBVERSE 7:00 LC-47-1	EF	MB	\$10.00
442	1952	CENT	"HORNED HEAD" DIE BREAKS FOREHEAD TO RIM	VF	MB	\$1.00
443	1956 D	CENT	CUD OBVERSE 7:30 LC-56D-1	UNC	MB	\$4.00
444	1964 D	CENT	CUD OBVERSE 7:00 LC-64D-1	AU	MB	\$4.00
445	1964 D	CENT	CUD OIBVERSE 7:00 LC-64D-4	UNC	MB	\$3.00
446	1969 S	CENT	CUD OBVERSE 7:00 LC-69S-3	BU	MB	\$4.00
* 447	1971 D	CENT	LARGE CUD OBVERSE TOP OF HEAD LC-71D-2	EF	MB	\$12.00
448	1971 S	CENT	CUD OBVERSE 4:30 TO 5:30 UNLISTED	EF	MB	\$6.00
* 449	1972 D	CENT	LARGE CUD OBVERSE COVERS "IN GOD WE TRU" + STRONG CLASHED DIES	BU	MB	\$38.00
* 450	1973 D	CENT	LARGE CUD TOP OF HEAD LC-732-9	UNC	MB	\$15.00
451	1976	CENT	CUD OBVERSE 1:00 LC-76-12	AU+	MB	\$7.00
* 452	1980	CENT	VERY LARGE CUD OBVERSE 8:00 TO 11:30	BU	MB	\$44.00
453	1981	CENT	CUD OBVERSE 1:00 LC-81-15	UNC	MB	\$7.00
454	1982	CENT	LGE DATE, CUD OBVERSE 10:00	UNC	MB	\$7.00
455	1982	CENT	SM DATE, CUD OBVERSE 12:00 LC-82SDC-2	FIN	MB	\$11.00
* 456	1982	CENT	LGE DATE COP, CUD OBVERSE 8:30 TO 10:30 LC-82-LD-18B	UNC	MB	\$24.00
457	1982	CENT	LGE DATE, CUD OBVERSE 1:30	UNC	MB	\$12.00
458	1983	CENT	CUD OBVERSE 5:00 LC-83-15	BU	MB	\$3.00
* 459	1983	CENT	LARGE CUD OBVERSE TOP HEAD LC-83-20	UNC	MB	\$22.00

460	1983	CENT	CUD OBVERSE 3:00 LC-83-21	BU	MB	\$3.00
461	1984	CENT	CUD OBVERSE 12:00 COVERS "OD W" LC-84-10	BU	MB	\$5.00
462	1984	CENT	CUD OBVERSE 7:00 LC-84-22	BU	MB	\$4.00
463	1984	CENT	CUD OBVERSE 5:00 LC-84-28	BU	MB	\$3.00
464	1986	CENT	CUD OBVERSE 5:30 LC-86-13	BU	MB	\$3.00
465	1988	CENT	CUD OBVERSE 5:00 LC-88-6	BU	MB	\$3.00
466	1995	CENT	CUD OBVERSE 7:00 LC--95-3	UNC	MB	\$4.00
467	1999	CENT	CUD OBVERSE 5:00 LC-99-2	BU	MB	\$3.00
* 468	N.D.	CENT	CUD OBVERSE 4-6:00 LC-ND-28	UNC	MB	\$21.00
469	N.D.	CENT	CUD OBVERSE 3:00 LC-ND-35 LOOKS LIKE 1983	UNC	MB	\$12.00
470	N.D.	CENT	CUD OBVERSE OVER DATE AREA LC-ND-20 ZINC	UNC	MB	\$14.00
* 471	1964	CENT	40% OFF CENTER 8:00	CHAU	MB	\$14.00
472	196(6)	CENT	10% OFF CENTER 3:30	UNC	MB	\$4.00
* 473	1970 S	CENT	55% OFF CENTER 12:30 RARE DATE	GEM	MB	\$175.00
* 474	1972 S	CENT	90% O/C 10:00 FULL DATE & MM RARE DATE	UNC	MB	\$185.00
475	1973 S	CENT	75% O/C 10:00 FULL DATE AND MM SUPER-RARE LAY-AWAY AVAILABLE IF YOU BID ON ALL THREE "S" MINT O/C	UNC	MB	\$295.00
476	1982	CENT	SM. DATE COPPER, 25% OFF CENTER 11:00	BU	MB	\$55.00
477	1982	CENT	SM DATE COPPER, 50% OFF CENTER 8:00	BU	MB	\$49.00
478	1982	CENT	LGE DATE COPPER, 55% OFF CENTER 11:00	UNC	MB	\$12.00
479	1983	CENT	75% OFF CENTER 10:30, SUPER STRETCH STRIKE & SLIGHTLY CUPPED	UNC	MB	\$12.00
480	1986	CENT	60% OFF CENTER 10:00 + STRAIGHT LINE GAS BUBBLES BLANK AREA	BU	MB	\$10.00
481	1988 D	CENT	50% O/C 8:00 STAIN ALONG EDGE 9-11:00	BU	MB	\$6.00
482	1990	CENT	30% OFF CENTER 1:30	UNC	MB	\$8.00
483	1990 D	CENT	DOUBLE STRUCK, 2ND 75% OFF CENTER, 2 FULL DATE ONE ABOVE THE OTHER	BU	MB	\$65.00
484	1995 D	CENT	25% OFF CENTER 1:00	BU	MB	\$14.00
485	1996 D	CENT	60% OFF CENTER 8:30	BU	MB	\$16.00
486	2003	CENT	7% OFF CENTER 7:30	BU	MB	\$7.50
487	2003	CENT	5% O/C 7:00 WITH DETAILS MISSING REVERSE	BU	MB	\$12.00
488	2007 D	CENT	15% OFF CENTER 4:00 RED RARE DATE	BU	MB	\$125.00
489	19xx	CENT	50% OFF CENTER 1:00	BU	MB	\$3.00
490	N.D.	CENT	60% OFF CENTER 3:30 + STRANGE ATTACHED LAMINTION FLAP REV RARE ON ZINC	BU	MB	\$25.00
491	N.D.	CENT	60% OFF CENTER 2:00 UYNIFACE REVERSE	UNC	MB	\$6.00
492	N.D.	CENT	70% OFF CENTER 4:00 UNIFACE STRETCH STRIKE	UNC	MB	\$6.00
493	N.D.	CENT	80% OFF CENTER 11:00 COPPER	UNC	MB	\$5.00
494	N.D.	CENT	85% O/C 1:00 DSBS SCR REV BLANK AREA	BU	MB	\$2.50
495	1944 D	CENT	RPM #1 WDDO-022	BU	MB	\$4.00
496	1952 D	CENT	PRM #6	BU	MB	\$3.75
497	1953 D	CENT	RPM #1	EF	MB	\$3.00
498	1953 D	CENT	RPM #1 STAGE A FS-01-1953 D-501	UNC	MB	\$12.00
499	1953 S	CENT	RPM #5	BU	MB	\$3.75
500	1954 D	CENT	RPM #1	BU	MB	\$15.00
501	1954 D	CENT	D OVER D RPM	EF	MB	\$1.00
502	1954 S	CENT	RPM #4	BU	MB	\$7.00
503	1955 D	CENT	RPM #3 FS-01-1955D-501	BU	MB	\$16.50
504	1955 S	CENT	RPM #2	UNC	MB	\$3.00
505	1955 S	CENT	RPM #2 STAGE G	BU	MB	\$4.50
506	1955 S	CENT	RPM #1 STAGE H	BU	MB	\$4.50
507	1955 S	CENT	RPM #2 STAGE K/L	BU	MB	\$4.50
508	1955 S	CENT	RPM #4 EDS	BU	MB	\$4.50
509	1955 S	CENT	RPM #5 STAGE A 5	BU	MB	\$4.50
510	1955 S	CENT	RPM #4 STAGE B	BU	MB	\$4.50
511	1955 S	CENT	RPM #4 STAGE D	BU	MB	\$4.50

512	1955	S	CENT	RPM #4	STAGE F	BU	MB	\$4.50
513	1956	D	CENT	RPM #9		BU	MB	\$6.00
514	1957	D	CENT	RPM #6		BU	MB	\$3.25
515	1957	D	CENT	RPM #17	STAGE B	UNC	MB	\$2.75
516	1958	D	CENT	RPM #7		UNC	MB	\$2.75
517	1958	D	CENT	RPM #15		BU	MB	\$3.00
518	1959	D	CENT	RPM #5		BU	MB	\$8.00
519	1959	D	CENT	RPM #6		BU	MB	\$4.00
520	1959	D	CENT	RPM #7		BU	MB	\$3.50
521	1959	D	CENT	RPM #8		BU	MB	\$6.00
522	1959	D	CENT	RPM 9		BU	MB	\$2.75
523	1959	D	CENT	RPM #10C		BU	MB	\$3.00
524	1959	D	CENT	RPM #13		BU	MB	\$3.75
525	1960	D	CENT	RPM #2		BU	MB	\$2.75
526	1960	D	CENT	RPM #3		BU	MB	\$2.75
527	1960	D	CENT	RPM #5		BU	MB	\$2.75
528	1960	D	CENT	RPM #6		BU	MB	\$2.75
529	1960	D	CENT	RPM #13	STAGE B	BU	MB	\$6.00
530	1960	D	CENT	RPM #15		BU	MB	\$3.25
531	1960	D	CENT	RPM #16		BU	MB	\$6.50
532	1960	D	CENT	RPM #17		BU	MB	\$6.50
533	1960	D	CENT	RPM #19		BU	MB	\$6.00
534	1960	D	CENT	RPM \$20		BU	MB	\$2.75
535	1960	D	CENT	RPM #24		BU	MB	\$2.75
536	1960	D	CENT	RPM #28		UNC	MB	\$2.50
537	1960	D	CENT	RPM #29		BU	MB	\$2.75
538	1960	D	CENT	RPM #35		BU	MB	\$3.50
539	1960	D	CENT	RPM #38		BU	MB	\$3.00
540	1960	D	CENT	RPM #42		BU	MB	\$2.50
541	1960	D	CENT	RPM #49		BU	MB	\$2.75
542	1960	D	CENT	RPM #53	STAGE A	BU	MB	\$3.00
543	1960	D	CENT	RPM #71		BU	MB	\$2.75
544	1960	D	CENT	RPM #72		BU	MB	\$3.00
545	1960	D	CENT	RPM #102	STAGE C	UNC	MB	\$3.00
546	1960	D	CENT	RPM #109		UNC	MB	\$3.00
547	1960	D	CENT	RPM #110	STAGE A/B	BU	MB	\$3.25
548	1961	D	CENT	RPM #1	FS-01-1961D-501	BU	MB	\$17.50
549	1961	D	CENT	RPM #2		BU	MB	\$2.75
550	1961	D	CENT	RPM #4		BU	MB	\$2.75
551	1961	D	CENT	RPM #12		BU	MB	\$2.75
552	1961	D	CENT	RPM #16		BU	MB	\$2.75
553	1961	D	CENT	RPM #18		BU	MB	\$2.50
554	1961	D	CENT	RPM #21		BU	MB	\$3.75
555	1961	D	CENT	RPM #22		BU	MB	\$2.75
556	1961	D	CENT	RPM #27		BU	MB	\$2.75
557	1961	D	CENT	RPM #28		BU	MB	\$3.75
558	1961	D	CENT	RPM #33	STAGE C	BU	MB	\$2.75
559	1961	D	CENT	RPM #34		BU	MB	\$2.75
560	1961	D	CENT	RPM #39		BU	MB	\$2.75
561	1961	D	CENT	RPM #47		BU	MB	\$3.75
562	1961	D	CENT	RPM #61	EDS	UNC	MB	\$3.25
563	1961	D	CENT	RPM #64		BU	MB	\$2.75
564	1962	D	CENT	RPM #5		BU	MB	\$2.50
565	1962	D	CENT	RPM #6		BU	MB	\$2.50
566	1962	D	CENT	RPM #8		BU	MB	\$2.50
567	1962	D	CENT	RPM #12		BU	MB	\$2.50
568	1962	D	CENT	RPM #15		BU	MB	\$2.50

569	1963 D	CENT	RPM #2		BU	MB	\$2.75
570	1963 D	CENT	RPM #4		BU	MB	\$3.75
571	1963 D	CENT	RPM #5		BU	MB	\$2.75
572	1963 D	CENT	RPM #6		BU	MB	\$2.75
573	1963 D	CENT	RPM #9		BU	MB	\$2.75
574	1963 D	CENT	RPM #16		BU	MB	\$2.75
575	1964 D	CENT	RPM #2		BU	MB	\$3.75
576	1964 D	CENT	RPM #7		BU	MB	\$2.75
577	1964 D	CENT	RPM #8		BU	MB	\$2.75
578	1969 D	CENT	RPM #8		BU	MB	\$3.25
579	1969 S	CENT	RPM #2		BU	MB	\$2.75
580	1955 S	CENT	BIE + FILLED 9 + CRACKED SKULL		BU	MB	\$1.50
581	2009 P	CENT	DDR-3--R-VIII WDDR 003		BU	MB	\$6.00
582	ASST	CENT	4 COINS LOOK LIKE ERRORS ARE NOT EDUCATIONAL COINS		CIRC	MB	\$1.00
583	2009 P	CENT	DOUBLED THUMB DDR-004 AS SHOWN IN 6/22/2009 COIN WORLD		BU	MB	\$3.75
584	2009 P	CENT	DOUBLED THUMB AS LOT 583 THIS A 10 COIN LOT		BU	MB	\$29.00
585	2009 P	CENT	AS IN LOT 583 THIS 50 COIN LOT		BU	MB	\$125.00
586	1955	CENT	SHIFTED 5 & CRACKED SKULL 10 COIN LOT		BU	MB	\$15.00
587	1955/5	CENT	CRACKED SKULL & LAST 5 SHIFTED		BU	MB	\$2.50
588	ASST	CENT	LOT OF 200 COINS, IDENTIFIED MINOR ERRORS ON BU CENTS MANY MULT, 40 DIFF ERRORS		BU	MB	\$35.00
589	1955/5	CENT	100 COINS WITH SHIFTED 5 & CRACKED SKULL		BU	MB	\$99.00
590	N.D.	OTHER	BYSANITINE ANCIENT FLIPOVER DOUBLE STRUCK		VG	MB	\$85.00
* 591	(784)	OTHER	TABRIZ,PERSIA, 20% OFF CENTER FULL MIRROR BROACAGE A-2313.1		FIN	MB	\$38.00
592	292	OTHER	WESTERN USATRAPAS VISVASENA, FULL MIRROR BROCKAGE		FIN	MB	\$45.00
593	55 BC	OTHER	ROMAN REPUBLIC, OBV: VEILED HEAD OF CONCORD, REV: MIRROR BROCKAGE		FIN	MB	\$85.00
594	1948	OTHER	ARGENTINA, 10c, 15% OFF CENTER ++ CRACK THRU PLANCHET 1:30 HALF WAY ACROSS COIN		AU	MB	\$45.00
595	1948	OTHER	ARGENTINA, 5c, 15% OFF CENTER 2:00		AU	MB	\$32.00
596	1829 R	OTHER	BRAZIL, 20r, 5% OFF CENTER		VF	MB	\$35.00
* 597	1828	OTHER	BRAZIL, STRUCK 15% OFF CENTER 8:00 DOLLAR SIZE COPPER COIN		EF	MB	\$45.00
* 598	1972	OTHER	BRAZIL, 20 CRUZEIROS, STRUCK IN RETAINED STAPLE 6:00 TO EDGE		PRF	MB	\$55.00
599	1951	CENT	CANADA, LAMINATION 10:00 ONTO FOREHEAD		EF	MB	\$0.50
600	N.D.	OTHER	TYPE 2 COPPER PLANCHET (BIGGER THAN HALF) 211.1 GRAINS, LOOKS LIKE A 20 CASH CHINA SIZE		EF	MB	\$12.00
* 601	N.D.	OTHER	HINAN CHINA, 20 CASH COPPER COIN SILVER DOLL SIZE OBV CUD 12:00 + 5% OFF CENTER, MAJOR TAPERED PLANCHET WOW		FIN	MB	\$35.00
602	N.D.	OTHER	REPUBLIC OF CHINA, CRACKED PLANCHET 2:00 TO 8:00 ALMOST IN 2 PIECES, 10 CASH		FIN	MB	\$17.00
603	1917	OTHER	CHINA, 70% O/C + LARGE ROLLED IN SLAG ON OBV BLANK AREA + SM SLAG REV 20 CASH		VG	MB	\$45.00
604	1917	OTHER	HUPOO CHINA, 20 CASH, BROADSTRUCK		EF	MB	\$24.00
605	1947	OTHER	COSTA RICA 10 CENTIMES, FULL MIRROR BROCK		EF	MB	\$95.00
606	1918	OTHER	FRENCH NOTEGELD 20c, 3% CURVED CLIP 1:00 + CUDS 6:00 AREA		BU	MB	\$22.00
607	(1650)	OTHER	GERMAN STATE GROSCHN, FULL MIRROR BROCKAGE		EF	MB	\$125.00
608	1950 F	OTHER	GERMANY 5 PFENNIG, PARTIAL FILLED DIE OVER "EN" 6:30		EF	MB	\$1.50
* 609	1999	OTHER	INDIA 50 PAISA, STRUCK ON 25 P PLANCHET ++ 2ND STRIKE OFF CENTER 75% O/C 2:00 UNIFACE WOWSER!!!		BU	MB	\$150.00

* 610	N.D.	OTHER	INDIA, RUPEE, MIRROR BROCKAGE YOUNG QUEEN HAS HOLE PUNCHED IN TOP	VF	MB	\$45.00
611	1902	OTHER	MALDIVES 4 LAIRIAT, KM-40.1, DOUBLE STRUCK ON CENTER AND SMALL CLIP	EF	MB	\$12.50
612	1956	OTHER	MEXICO CENT, RIM CLIP 2:00	UNC	MB	\$2.50
613	1969	\$5	MARSHALL ISLANDS, \$ SIZE CN COIN, STRUCK WITH PARTIAL COLLAR, PLUS A NORMAL COIN (2COIN LOT)	BU	MB	\$12.00
614	1821	OTHER	NETHERLANDS EAST INDIES, 1/2 STIVER, DOUBLE STRUCK 2ND 40% OFF CENTER 12:00 CLEANED	VF	MB	\$39.00
615	1987	OTHER	LUXEMBOURG FRANC, BOTTOM OF 8 DIE BREAK	AU	MB	\$1.00
616	N.D.	OTHER	JAPAN 5 SEN, LAM BOTH SIDES ALUMINUM	FIN	MB	\$1.00
617	1956	DIME	CANADA, 5% CURVED CLIP 6:00	VF	MB	\$2.00
618	1993	OTHER	MISS BELLE II, STRONG DOUBLED DIE CASINO TOKEN NICK SIZE, = REGULAR TOKEN PAIR	CIRC	MB	\$4.50
619	N.D.	OTHER	CANTON CITY LINES BUS TOKEN WITH MISPUNCHED HOLES NOT CENTERED	EF	MB	\$5.00
* 620	N.D.	OTHER	BRASS TOKEN HALF DOLL SIZE, BROADSTRUCK, + DBL STRK 60% O/C + 60% PARTIAL BROCKAGE	BU	MB	\$28.00
621	1796	DIME	"COPY" 4 CURVED CLIPS, 10% 2:00, 10% 5:00, 15% 7:30, 15% 10:00 WOW!!	BU	MB	\$12.50
622	1796	DIME	"COPY" STRUCK WITH 2 20% INDENTS OBVERSE NEAT SAME SIZE & METAL AS ORIGINAL COIN	BU	MB	\$12.50
623	1796	HALF	"COPY" DBL STRUCK, 2ND 5% OFF CENTER 9:00	BU	MB	\$19.00
624	1796	DOLL	"COPY" LARGE LAMINATION FLAP ACROSS HEAD TO END HAIR FROM 1:00 ATTACHED NEAT	BU	MB	\$29.00
625	1804	DOLL	"COPY" DOUBLE STRUCK ON CENTER, PARTS OF "TATES OF A" SHOW REVERSE	BU	MB	\$29.00
626	1939	OTHER	AUSTRALIA LG PENNY, LAM PEEL 1:30 ON HEAD	VFEF	MB	\$2.50
628	2005 P	QUAR	W. VIRGINIA NICE FULL CUD 4:00	AU	MB	\$2.50
629	1982 P	QUAR	HEAVILY WORN DIES LIBERTY ATTACHED TO RIM	AU	MB	\$0.50
630	1979	DOLL	WIDE RIM NEAR DATE	AU	MB	\$5.00
631	1971 D	HALF	LRG, DEEP INDENTATION ON HEAD DUE TO STRIKE THRU	AU	MB	\$1.50
632	2007 P	DOLL	WASHINGTON IMPROPPER LETTER SPACING DATE JAMMED NEXT TO EPU	BU	MB	\$2.50
633	2007 P	DOLL	AS ABOVE	BU	MB	\$2.50
634	2010 P	DOLL	SAC TWO LIGHT EXTRA STARS ON EDGE LETTERING 1 BEFORE DATE AND 1 AFTER DATE	BU	MB	\$10.00
635	2007 P	DOLL	JEFF SM STRIKE THROUGH OVER E OF STATES	BU	MB	\$1.50
636	2009 P	DOLL	SAC VERY FAINT DATE	BU	MB	\$5.00
637	2007 P	DOLL	MADISON CROOKED EDGE LETTERING IGWT SLIGHTLY RUNNING OFF PLANCHET	BU	MB	\$7.00
638	2007 D	DOLL	WASH WEAK EDGE LETT TOP OF IGWT MISSING	BU	MB	\$5.00
639	2009 P	DOLL	SAC WEAK EDGE LETTERING BOTTOM OF DATE AND EPU MISSING	BU	MB	\$5.00
640	2007 P	DOLL	SAC EXTRA "O" BETWEEN IN AND GOD	BU	MB	\$5.00
641	2010 P	DOLL	SAC 2 OF DATE ALMOST INVISIBLE	BU	MB	\$2.50
642	2009 P	DOLL	SAC SLIGHTLY FATTER THAN USUAL EDGE LETT	BU	MB	\$5.00
643	2009 D	DOLL	SAC IMPOPPER EDGE LETTER SPACING D MM TOO CLOSE TO DATE. 5 COIN LOT	BU	MB	\$15.00
644	2010 D	DOLL	SAC LIGHT EXTRA STAR IN EDGE LETTERING 3-COIN LOT	BU	MB	\$12.00
645	2010 P	DOLL	SAC LIGHT EXTRA STAR IN EDGE LETTERING 4-COIN LOT	BU	MB	\$15.00
646	2007 D	DOLL	ADAMS STRUCK THROUGH GREASE 3-COIN LOT	BU	MB	\$5.50
647	2009 D	DOLL	SAC INVERTED "B" AFTER 1ST AND 2ND STAR AFTER UNUM	BU	MB	\$5.00

PRICES REALIZED SALE 37 --- CLOSED 1/31/2010

1	\$5,999.00		88	\$45.00		208	\$18.00		342	\$1.50	422	\$4.00		505	\$2.00	
2	\$192.50	R	89	\$35.00		210	\$18.00		343	\$2.10	423	\$8.55		509	\$1.50	
11	\$75.00	T	92	\$35.00		216	\$23.00		347	\$2.50	424	\$3.55		510	\$2.00	
13	\$49.50	R	93	\$15.00		219	\$23.00		348	\$3.00	425	\$5.50	R	511	\$2.00	
14	\$85.00		98	\$50.61	R	221	\$22.00		349	\$4.40	426	\$2.53	R	512	\$2.00	
19	\$55.00		107	\$15.00		222	\$1.50		350	\$2.47	427	\$25.00		515	\$1.50	
24	\$199.00		111	\$3.00		224	\$16.78		351	\$2.00	428	\$5.01	R	516	\$4.68	R
28	\$295.00		112	\$4.40	R	225	\$25.00		355	\$18.00	429	\$5.01	R	517	\$2.50	
31	\$60.50	R	113	\$3.00		238	\$15.00		356	\$65.00	430	\$5.01	R	518	\$2.50	
33	\$95.00		114	\$3.00		247	\$28.48	R	365	\$16.00	431	\$2.20	R	519	\$2.50	
34	\$245.00		117	\$15.00		248	\$7.70	R	366	\$16.00	432	\$65.55		520	\$2.00	
39	\$395.00		119	\$50.71	R	250	\$1.50		371	\$50.60	433	\$15.55		525	\$2.00	
42	\$126.50	R	120	\$97.25		251	\$11.00	R	372	\$110.00	434	\$3.30	R	534	\$1.75	
43	\$242.00	R	121	\$22.00		252	\$57.20	R	373	\$80.00	435	\$2.50		539	\$2.00	
44	\$42.00		122	\$59.00		253	\$4.40	R	378	\$19.00	436	\$1.50		547	\$4.00	
46	\$85.00		124	\$59.00		264	\$3.85	R	385	\$2.75	437	\$1.50		552	\$2.00	
47	\$220.00		125	\$25.00		280	\$40.97	R	386	\$594.00	439	\$6.00		555	\$4.68	R
48	\$490.00		126	\$22.00		284	\$18.00		387	\$540.00	441	\$1.50		560	\$3.00	
50	\$175.00		127	\$22.00		288	\$24.00		391	\$3.50	442	\$33.00	R	575	\$195.00	
51	\$42.00		128	\$25.00		289	\$12.00		394	\$14.00	443	\$0.50		580	\$6.60	R
52	\$135.00		138	\$125.00		293	\$13.50		395	\$3.00	444	\$45.00		583	\$25.00	
54	\$111.10	R	145	\$15.00		297	\$35.00		399	\$7.20	446	\$8.00		587	\$0.50	
55	\$195.00		148	\$9.50		301	\$10.00		400	\$10.00	449	\$1.00		591	\$4.50	
56	\$38.50	R	152	\$39.00		308	\$30.00		401	\$8.31	450	\$1.00		595	\$9.50	
57	\$75.00		156	\$55.00		309	\$51.70	R	402	\$9.40	452	\$1.00		596	\$10.00	T
58	\$24.00		157	\$3.00		310	\$15.00		404	\$10.51	453	\$0.55	R			
59	\$27.50	R	159	\$200.00	T	311	\$5.00		405	\$6.00	456	\$2.50				
62	\$14.00		164	\$9.35	R	312	\$4.75		406	\$3.90	457	\$1.50				
63	\$275.00		165	\$6.00		315	\$9.00		407	\$9.35	461	\$1.50				
64	\$116.71	R	166	\$6.00	T	320	\$695.00		408	\$27.50	467	\$9.45	R			
65	\$37.00		167	\$4.40	R	321	\$8.80	R	409	\$6.11	473	\$3.95				
66	\$33.00	T	172	\$3.50		322	\$8.25	R	410	\$6.11	474	\$325.00				
68	\$99.00		178	\$106.70	R	323	\$13.20	R	411	\$6.88	475	\$12.10	R			
71	\$19.68	R	180	\$43.00		324	\$9.90	R	412	\$12.55	478	\$2.50				
72	\$12.00		182	\$12.00		325	\$5.01	R	413	\$9.90	489	\$52.80	R			
73	\$16.00		184	\$7.50		326	\$7.70	R	414	\$15.55	490	\$1.10	R			
74	\$13.20	R	185	\$45.00		327	\$11.00	R	415	\$16.53	491	\$5.00				
75	\$12.38	R	186	\$27.50	R	328	\$9.90	R	416	\$39.63	492	\$11.00				
77	\$36.00		187	\$51.89		329	\$8.80	R	417	\$6.00	496	\$3.74	R			
78	\$29.50		188	\$21.00		332	\$24.20	R	418	\$7.70	497	\$8.80	R			
79	\$595.00		189	\$25.30	R	333	\$24.20	R	419	\$5.00	498	\$2.25				
84	\$28.00		203	\$6.00		336	\$65.00		420	\$3.55	501	\$4.00				
85	\$35.00		204	\$6.00		339	\$1.95		421	\$18.03	503	\$2.00				
											504	\$2.20	R			

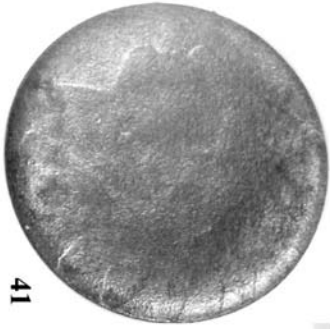
THATS IT FOR THIS SALE. THANKS TO ALL THAT JOINED IN ON THIS ONE.  
 R = PRICE REDUCED FROM BID. T = THE BIDS RECEIVED FIRST POST MARK WINS.  
 BIDDERS WHO DID NOT SHOW UP TO THE AUCTION WILL BE CONSIDERED AS WITHDRAWING.  
 THANKS AGAIN TO ALL OF YOU. -LEN ROOSMALEN



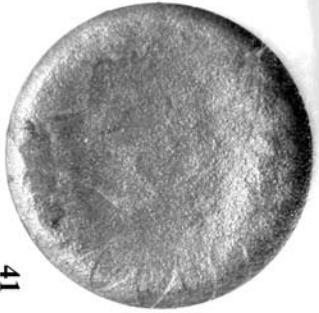
46



46



41



41



45



49



50



50

# JIM'S CBS