

**JIM'S C&S**

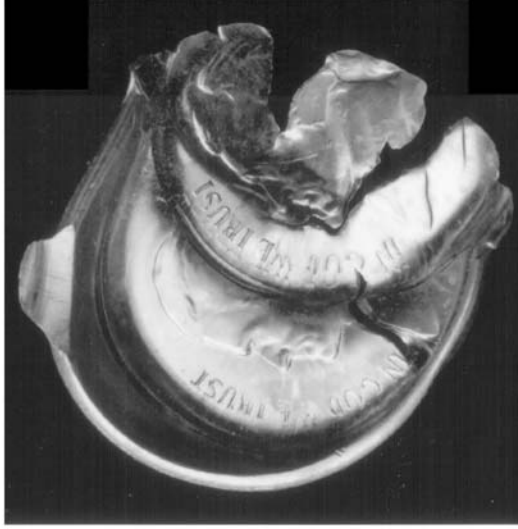
Hilldale Shopping Center  
702 N. Midvale Blvd. B-2  
Madison, WI 53705  
(608) 233-2118

[www.jimscoins.net](http://www.jimscoins.net)



20. Super O/C + CLIP  
PCGS-64

**NO.37**



26 Awesome triple struck 5c cap NGC-66

**\*FIRST CLASS\***

**MAIL BID SALE #J-37  
CLOSES JANUARY 31, 2009**

- 1) SEND ALL BIDS TO: JIM'S COINS, 702 N. MIDVALE BLVD. B-2, MADISON, WI 53705, OR FAX #608-233-0175, OR PHONE 608-233-2118, OR EMAIL: jimcoins @sbcglobal.net
- 2) THE HIGHEST BIDDER ACKNOWLEDGED BY THE AUCTIONEER SHALL BE THE BUYER. THE AUCTIONEER RESERVES THE RIGHT TO REJECT ANY BID OR WITHDRAW ANY LOT FROM THE SALE. BIDDERS ARE RESPONSIBLE FOR THEIR OWN ERRORS, SO DOUBLE CHECK YOUR BIDS. THE FIRST POSTMARK WINS IN CASE OF A TIE BID.
- 3) ALL SALES ARE FOR CASH AND ARE PAYABLE IMMEDIATELY UPON RECEIPT OF THE INVOICE.
- 4) AUCTIONS ARE OPEN TO ALL AND NO DEPOSIT IS REQUIRED OR DESIRED.
- 5) NO UNLIMITED BIDS ARE ACCEPTED. WINNING BIDDERS WILL BE AWARDED LOT AT A 10% ADVANCE OVER THE SECOND HIGHEST BID. IF NO OTHER BIDS ARE RECEIVED FOR A LOT, THE BIDDER WILL BE AWARDED THE LOT AT THE MINIMUM BID, OR ESTIMATE IF NO MINIMUM IS GIVEN.
- 6) ALL ITEMS ARE GUARANTEED GENUINE. BIDDERS MAY RETURN ANY ITEM NOT AS DESCRIBED.
- 7) A \$1 HANDLING CHARGE WILL BE ADDED TO ALL WINNING INVOICES. BID EARLY AND BID OFTEN. THANKS! - LEN & JIM

* 1	ASST	OTHER	ONCE-IN-A-LIFETIME SET OF 5 MAJOR OFF CENTER COINS ON WRONG PLANCHETS, ALL PICTURED ON BACK COVER. WOULD BE VERY DIFFICULT, AND TAKE A VERY LONG TIME, AND PROBABLY COST A LOT MORE TO AGAIN FIND A SET LIKE THIS.	ASST	MB	\$5999.00
2	1878 S	DOLL	VAM-26, LONG NOCK, TOP 100, ANACS	VF30	MB	\$145.00
* 4	1998	ASE	LOOKS LIKE O/C CAP, 1/5 INCH RIM 12:00 TO 6:00 BARELY FITS IN NGC SLAB HOLDER SAYS HORIZ MISALIGNMENT ERROR	MS68	MB	\$1,750.00
* 5	1974 D	DOLL	FLIP OVER DOUBLE STRUCK, 2ND 90% OFF CENTER UNIFACE REV PCGS	MS64	MB	\$895.00
* 6	N.D.	DOLL	SUZY STRUCK ON CENT PLANCHET GREAT CENTERING RED/BRN PCGS	MS62	MB	\$3,495.00
* 7	1999 P	DOLL	SUZY STRUCK 60% OFF CENTER 1:00 NGC	MS67	MB	\$650.00
* 8	1999 P	DOLL	SUZY DOUBLE STRUCK, 2ND 90% OFF CENTER 12:00 SHOWS "ER" UNIF REV PCGS	MS63	MB	\$435.00
* 9	2008 S	DOLL	J.Q. ADAMS EXTREMELY HIGH RIM (DOUBLE PLAN THICK) AND EDGE LETTERS RUN OFF 1/2 LETTER'S WIDTH OFF OF EDGE ON OPPOSITE SIDE WEIRD! NGC	PF69	MB	\$225.00
10	(2007)	DOLL	G. WASHINGTON, MISSING EDGE LETTERING, EDGE VIEW HOLDER PCGS	MS66	MB	\$125.00
11	1942	HALF	DOUBLED DIE REVERSE BREEN-5190, STRONG FS#801 ANACS	AU55	MB	\$58.00
12	1966	HALF	SPEC MINT SET COIN, NO "FG" INITIALS FS-901 PCGS	MS65	MB	\$95.00
13	1974 D	HALF	DOUBLED DIE OBVERSE #1 PCGS	MS63	MB	\$45.00
14	1976 S	HALF	SILVER DOUBLED DIE OBVERSE FS-101 (FS-016) PCGS	MS64	MB	\$85.00
* 15	N.D.	HALF	KENNEDY STRUCK 50% OFF CENTER 3:00 APROX 60% OF FACE & HEAD NEAT PCGS	MS62	MB	\$450.00
16	1971 D	HALF	DOUBLE 3% CURVED CLIPS 4:00 & 9:00 PCGS	AU58	MB	\$19.95
17	1961	QUAR	STRUCK ON SILVER DIME PLANCHET FULL DATE & MOST HEAD PCGS	AU58	MB	\$1,250.00

18	1972 D	QUAR	STRUCK ON CENT PLANCHET 3.08 GR NEAT TONING COLOR NGC RED BRN	MS65	MB	\$1,250.00
19	1943 S	QUAR	DOUBLED DIE OBVERSE (1-0-1) FS#25c-017 PCI	FN15	MB	\$55.00
*	20	1999 P	QUAR GEORGIA, WOWSER!!!, 30% OFF CENTER ON 45% STRIGHT CLIPPED PLANCHET PCGS	MS64	MB	\$850.00
21	1999 P	QUAR	NEW JERSEY, DOUBLE STRUCK, 2ND 75% OFF CENTER UNIF REVERSE PCGS	MS63	MB	\$325.00
22	1999 P	QUAR	DELAWARE, STRUCK 30% OFF CENTER 11:00 PCGS	MS64	MB	\$299.00
*	23	1999 P	QUAR GEORGIA, STRUCK 20% OFF CENTER 10:00 PCGS	MS66	MB	\$110.00
*	24	1912 D	DIME BROADSTRUCK BARBER DIME ICG	AU55	MB	\$199.00
25	1950 D	DIME	DOUBLED DIE REVERSE FS-801 ICG	MS63	MB	\$150.00
*	26	N.D.	NICK TRIPLE STRUCK "CAP" A WOWSER ERROR WITH NGC PHOTO CERTIFICATE	MS66	MB	\$975.00
27	1898	NICK	STRUCK ON NICARAGUA 5 CENT PLANCHET PCGS	VF35	MB	\$675.00
28	1970 D	NICK	STRUCK ON CENT PLANCHET NICE CENTERING PCGS	AU58	MB	\$295.00
29	N.D.	NICK	STRUCK 70% OFF CENTER ON DIME PLANCHET PCGS	MS65	MB	\$1,250.00
30	2004 P	NICK	PEACE MEDAL, DOUBLED DIE OBVERSE PCGS	MS63	MB	\$145.00
31	1995D/S	NICK	OVER MINT MARK D OVER S ANACS	MS64	MB	\$45.00
32	1858	SIL3c	STRUCK 5% OFF CENTER 7:30 PCGS	VF30	MB	\$550.00
*	33	1834	CENT STRUCK ON A CRACKED PLANCHET ALMOST CRACKED IN HALF NGC BRN	GD4	MB	\$95.00
*	34	1862	CENT LARGE CENTERED BROADSTRIKE + STRONG PRE-CUD DIE CRACK ICG	AU50	MB	\$245.00
*	35	1883	CENT DOUBLE STRUCK, 2ND 75% OFF CENTER 12:00 NGC BRN	VF30	MB	\$675.00
36	1892	CENT	DOUBLE STRUCK, 2ND 10% OFF CENTER VERY UGLY BUT CHEAP NCS DETAILS CORRODED	AG	MB	\$95.00
37	1894	CENT	STRUCK 5% OFF CENTER 6:00 NGC BRN	MS62	MB	\$225.00
38	1908	CENT	10% OFF CENTER 6:30 ANACS BRN	MS63	MB	\$295.00
*	39	N.D.	CENT ZINC, MULTI STRUCK FOLD OVER CHECK THE PICTURE A WOWSER ERROR ANACS RED	MS64	MB	\$395.00
40	1945	CENT	STRUCK ON A NETHERLANDS EAST INDIES 1/2c PLANCHET NGC BRN	AU55	MB	\$365.00
*	41	N.D.	CENT OBVERSE STRUCK 80% THRU FOLDED CLOTH NICE WEAVE PATTERN PCGS BRN	MS62	MB	\$225.00
42	1936	CENT	DOUBLED DIE OBVERSE TYPE 1 PCGS	XF40	MB	\$95.00
43	1944D/S	CENT	OVER MINT MARK D OVER S, VP-002.FS-512 NGC BRN	MS64	MB	\$199.00
44	1955 D	CENT	DOUBLED DIE OBVERSE-1/WDDO-001, FS-021.93/RD SEGS	MS65	MB	\$42.00
45	2000	CENT	STRUCK 25% OFF CENTER 1:00 PCGS RED	MS64	MB	\$29.50
46	1964	CENT	DOUBLED DIE REVERSE FS-801 DIE 1 ANCS RED	MS65	MB	\$85.00
*	47	1996	OTHER CANADA \$2.00 STRUCK WITH OFF CENTER CENTER PLUG NEAT PCGS	MS64	MB	\$220.00
48	N.D.	OTHER	1 CENT EURO STRUCK WITH REVERSE DIES BOTH SIDES ANACS RED	MS63	MB	\$490.00
*	49	1999	\$100 FED RESV NOTE, MISSING RIGHT SIDE SEAL	CHAU	MB	\$265.00
*	50	1988	\$100 F.R.N, APROX 40% OFFSET OF REVERSE ON LEFT END OBVERSE	EF	MB	\$175.00
*	51	1985	\$20 F.R.N, OBVERSE PRINT SHIFTED UP TO TOP EDGE C.G.A GRADED STAIN	VF35	MB	\$42.00
*	52	1993	\$10 F.R.N, APROX 90% REVERSE OFFSET ON OBVERSE FAIRLY DARK PCGS PPQ	AU58	MB	\$135.00
*	53	1985	\$5 F.R.N, 3RD PRINT SEALS & SER NUMBERS ON BACK PMG CHOICE	MS64	MB	\$499.00
*	54	1977	\$5 F.R.N, BLACK INK SMEAR TOP TO BOTTOM RIGHT	MS63	MB	\$89.00

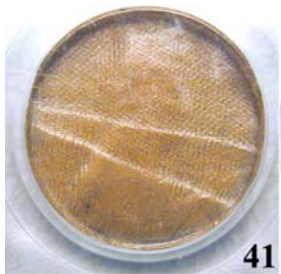
SIDE OBV PCGS CHOICE PPQ						
* 55	1977	\$5	F.R.N, INSUFFICIENT INKING ERROR BLACK VERY LIGHT PMG EPQ	MS64	MB	\$195.00
56	1999	\$5	F.R.N, OBVERSE SHIFTED UP AND RIGHT OFF PAPER	AU58	MB	\$32.00
* 57	1995	\$2	F.R.N, WET INK TRANSFER BOTH SIDES WEIRD NOTE PMG GRADED	VF20	MB	\$75.00
58	1976	\$2	F.R.N, SEALS SHIFTED UP NOTICABLY 2ND PRINT ONLY	VF	MB	\$24.00
59	1976	\$2	F.R.N, 3 NOTES WITH SHIFTED PRINTING	CU	MB	\$25.00
* 60	1917	\$1	LEGAL TENDER NOTE LARGE SIZE WITH WHITE GUTTER FOLD OBV & REV NEAT OLDIE PMG	VF25	MB	\$435.00
* 61	1935E	\$1	SILV CERT, SEALS & SERIAL# PRINTED ACROSS BACK ROTATED ALMOST 90o, 2 SEALS VERY UNUSUAL PMG	CF15	MB	\$980.00
62	1935E	\$1	SILV CERT, MINOR OBV INK SMEAR NEAR BOTTOM	EF	MB	\$14.00
* 63	1995	\$1	F.R.N, MISSING 1ST REVERSE PRINTING BLANK WHITE	CHAU	MB	\$275.00
* 64	1988A	\$1	F.R.N, BUTTERFLY FOLD ERROR LOW LEFT CORNER PMG EPQ	EF45	MB	\$105.00
65	2003A	\$1	F.R.N, INSUFFICIENT INK LEFT SEAL LIGHT GRAY INSTEAD OF BLACK GEM UNC U.S.GRADING	BU67	MB	\$37.00
66	1977A	\$1	F.R.N, PARTIAL BACK TO FACE OFFSET LEFT END PCGS CHOICE	AU55	MB	\$29.00
* 67	2003A	\$1	F.R.N, FULL DARK OFFSET FACE TO BACK PCGS PPQ	AU55	MB	\$145.00
* 68	1981	\$1	F.R.N, FULL MEDIUM OFFSET FACE TO BACK	VF	MB	\$99.00
* 69	1863	OTHER	5 CENT FRACTIONAL NOTE WITH GUTTER FOLD ON UP RT CORNER PMG EPQ	AU58	MB	\$230.00
70	1969 D	OTHER	1/2 MINT SET AS ISSUED, HALF HAS A NICE STRAIGHT CLIP 6:00	UNC	MB	\$85.00
71	1962	OTHER	PROOF SET AS ISSUED, BUT HAS A 1962 D CENT INSTEAD OF PROOF CENT SOME WHITE SPOTS ON SILVER	PRF	MB	\$16.00
72	1968 S	OTHER	PROOF SET AS ISSUED, STRUCK THRU THREAD REV QUARTER 5:00 TO 6:00 "R" TO "LL"	PRF	MB	\$12.00
73	1969 S	OTHER	PROOF SET AS ISSUED, CAMEO HALF WITH SLASH THRU FACE LAMINATION ABOVE "G" OF GOD	PRF	MB	\$12.00
74	1970 S	OTHER	PROOF SET AS ISSUED, CENT RAIHOW TONING, MONOR DDO ??	PRF	MB	\$10.00
75	1981 S	OTHER	PROOF SET AS ISSUED, DIME IS STRUCK THRU TINY STRINGS ON NOSE LOOKS LIKE BOOGER NEAT	PRF	MB	\$10.00
76	2007 S	QUART	SILVER QUARTER PROOF SET IN ISSUED PLASTIC, ID HAS HUGE STRUCK IN BLACK MATERIAL ACROSS NECK OF EAGLE AND IN FIELD "BEHEADED EAGLE"	PRF	MB	\$675.00
77	2000 P	OTHER	"50 STATE QUARTER COIN & DIE SET "AS ISSUED BY MINT, MARYLAND 25c + DEFACED DIE IN BOX WITH CERTIFICATE	BU	MB	\$35.00
78	1968 S	OTHER	9x6 1/2" WOOD PLAQUE, DEFACED DIE + BU CENT + 3x5" METAL EXPLAINING ABOUT MINTING ETC NEAT	BU	MB	\$29.50
* 79	2008	OTHER	WOWSER!, CHILE 500 PESO COIN STRUCK ON COMPLETE FEEDER FINGER, KM 235 NEAT	UNC	MB	\$595.00
80	1980	OTHER	WITHDRAWN	UNC	MB	\$00.00
81	1980	OTHER	10c OLYMPIC SPEAR THROWER COLOR PRINTING SLIGHTLY MISALIGNED	BU	MB	\$2.50
82	1882 O	DOLL	VAM 3 O OVER SMINT MARK ORIGINAL TONING	CHAU	MB	\$99.00
83	1921	DOLL	INFREQUENTLY REEDED VARIETY PARTIAL	BU	MB	\$39.00

## RAINBOW TONED

84	1921	DOLL	INFREQUENTLY REEDED VARIETY	AU58	MB	\$28.00	
85	1888 O	DOLL	NICE RIM CUD INTO INTO DENTICLES 5:30	VF	MB	\$35.00	
86	1921 D	DOLL	STRUNG PRE CUD DIE CRACK UNDER DATE	AU	MB	\$26.00	
*	87	1934	DOLL	RIM CLIP 7:00 TOUGHER DATE	MS60	MB	\$155.00
*	88	1922 D	DOLL	EXTREMELY STRONG DIE CRACK 8:00 ACROSS ALL OF NECK OBVERSE	BU	MB	\$45.00
89	1926	DOLL	STRUCK WITH EXTREMELY WORN DIES	EF	MB	\$35.00	
90	N.D.	DOLL	CLAD IKE TYPE 1 BLANK	UNC	MB	\$129.00	
91	N.D.	DOLL	CLAD IKE TYPE 2 PLANCHET	UNC	MB	\$115.00	
92	1972	DOLL	TYPE 2 REVERSE	AU	MB	\$35.00	
93	1978	DOLL	360o TILTED PARTIAL COLLAR, SCRATCHES OBV 3:00 & COUNTER SKID	UNC	MB	\$15.00	
*	94	1976	DOLL	STRAIGHT CLIP 7:00 TO 10:00 NEAT BICENTENNIAL	BU	MB	\$395.00
*	95	N.D.	DOLL	CLAD IKE STRUCK 90% OFF CENTER ONLY "T" OF LIBERTY SHOWS OBV & "R" ON REVERSE. INTERESTING SHAPE.	BU	MB	\$475.00
*	96	1978	DOLL	UNCENTERED BROADSTRIKE WITH TOUCH OF COLLAR, LOOKS 5% O/C	BU	MB	\$199.00
97	1994	ASE	PROGRESSION SET OF 4 COINS STRUCK THRU ON DATE	BU	MB	\$125.00	
*	98	1998	ASE	STRUCK THRU LONG 12mm STRING 12:00 TO CENTER COIN + SMALL PIECE 7:00	BU	MB	\$39.00
99	1989	ASE	HEAVY STRUCK THRU 4:30 ACROSS DATE, FEET, & OVER PART OF SUN	BU	MB	\$45.00	
100	1991	ASE	HEAVY STRUCK RETAINED GLUE? OBVERSE 4:00	BU	MB	\$35.00	
101	2007	ASE	SILVER EAGLE, STRUCK THRU RETAINED TAPE? OVER TRUST	BU	MB	\$39.00	
102	2009	ASE	STRUCK THRU OBVERSE AT TRUST	BU	MB	\$29.00	
103	N.D.	DOLL	SBA TYPE 2 PLANCHET	UNC	MB	\$75.00	
*	104	1999 P	DOLL	SBA, STRUCK 40% OFF CENTER 1:00 FULL DATE & MINT MARK	BU	MB	\$495.00
105	N.D.	DOLL	TYPE 2 PRESIDENTIAL PLANCHET	BU	MB	\$125.00	
106	N.D.	DOLL	SAC OR PRES. PIECE CHOPPED WEBBING SCRAP	UNC	MB	\$15.00	
*	107	N.D.	DOLL	WEBBING SCRAP AS ABOVE BUT NICE "BOW TIE" SHAPE FROM SAC or PRES DOLLAR	UNC	MB	\$15.00
108	N.D.	DOLL	SAME AS LOT 107 A LOT OF 5 PIECES	UNC	MB	\$60.00	
109	N.D.	DOLL	SAME AS ABOVE THIS A 10 PIECE LOT NEAT	UNC	MB	\$99.00	
*	110	2006 D	DOLL	SAC, OBVERSE 60% BROCKAGED BY COIN DURING "WAFFLE" PROCESS NEAT	UNC	MB	\$160.00
111	2009 P	DOLL	SAC, FAINT LOWER PART OF DATE ESPECIALLY ON 2	BU	MB	\$3.00	
112	2009 P	DOLL	SAC, INCOMPLETE 2 & LOWER PART OF DATE	BU	MB	\$3.00	
113	2009 P	DOLL	SAC, MISSING BOTTOM OF "P" IN DATE & PLURIBUS	BU	MB	\$3.00	
114	2009 P	DOLL	SAC MISSING BOTTOM OF DATE & PART E PLURIBUS	BU	MB	\$3.00	
115	2009 P	DOLL	SAC 2ND & 3RD STARS AFTER UNUM JAMMED TOGETHER	BU	MB	\$15.00	
116	2009 P	DOLL	SAC BAD SPACING AFTER DATE & STARS	BU	MB	\$20.00	
117	2009 D	DOLL	SAC * * * WITH NO SPACES AFTER DATE	BU	MB	\$15.00	
118	2009 D	DOLL	SAC BAD STAR SPACING AFTER DATE	BU	MB	\$10.00	
*	119	N.D.	DOLL	WAFFLED SACAGAWEA/PRESIDENTIAL BLANK PLANCHET	BU	MB	\$45.00
*	120	N.D.	DOLL	G. WASHINGTON, ERROR WAFFLED COIN MISSING EDGE LETTERING A SPOT OBVERSE	BU	MB	\$89.00
121	2007 P	DOLL	ADAMS EDGE LETTERING NOT SPACED EVENLY LOT OF 5 COINS	BU	MB	\$22.00	
122	2007 P	DOLL	ADAMS, OVERLAPPING DOUBLE EDGE VERY	BU	MB	\$59.00	

STRONG						
123	2007 P	DOLL	ADAMS, DOUBLE OVERLAPPING OR INVERTED EDGE LETTERING YOUR CHOICE 5 COIN LOT	BU	MB	\$249.00
124	2007 P	DOLL	ADAMS, INVERTED DOUBLE EDGE LETTERING VERY STRONG	BU	MB	\$59.00
125	2009 D	DOLL	Z.TAYLOR, ALLEDGE LETTERS EXTREMELY CLOSE TOGETHER	BU	MB	\$25.00
126	2009 D	DOLL	Z.TZYLOR, EXTRA 11TH STAR AFTER EPU	BU	MB	\$22.00
127	2009 D	DOLL	Z.TAYLOR, EXTRA 0 IN DATE & UNEVEN SPACING IN EDGE LETTERING	BU	MB	\$22.00
128	2009 D	DOLL	Z.TAYLOR, SAT OVERLAPPS MINT MARK	BU	MB	\$25.00
129	2009 D	DOLL	Z.TAYLOR, UNEVEN SPACING OF EDGE LETTERS 2 COIN LOT	BU	MB	\$12.00
130	2009 D	DOLL	Z.TAYLOR, NO SPACE BETWEEN DATE & D MINT MARK + UNEVEN SPACING	BU	MB	\$10.00
131	2009 D	DOLL	Z.TAYLOR, UNEVEN SPACING OF EDGE LETTERS LOT OF 5 COINS	BU	MB	\$20.00
132	2009 D	DOLL	Z.TAYLOR, NO SPACE BETWEEN DATE & MM + UNEVEN EDGE LETTERS 5 COIN LOT	BU	MB	\$27.00
133	1823	HALF	DOUBLE STRUCK OBVERSE STARS & DATE SCRATCH REV	FIN	MB	\$175.00
134	1940 S	HALF	VERY WEAK STRUCK DIE TRIALISH	AU	MB	\$45.00
135	1941	HALF	FLAKING EDGE LAMINATION 12:30	MS60	MB	\$39.00
136	N.D.	HALF	90% SILVER TYPE 2 PLANCHET	UNC	MB	\$60.00
137	N.D.	HALF	40% SILVER TYPE 2 PLANCHET 177.7 GRAINS	UNC	MB	\$225.00
138	1957 D	HALF	STRONG TILTED PARTIAL COLLAR, TOUGH ON A FRANKLIN	AU	MB	\$125.00
139	1963	HALF	UNUSUAL HEAVILY RUSTED? DIE	BU	MB	\$35.00
*	140	1963	LARGE STRAIGHT CLIP 9:00 TO 11:00, 10%	EF	MB	\$45.00
*	141	1955	5% CURVED CLIP 5:00 + RIM CLIP 3:00 TOUGH DATE	BU	MB	\$69.00
142	1956	HALF	3% CURVED CLIP 9:00	BU	MB	\$42.00
143	1958	HALF	2% RIM CLIP 10:00	EF	MB	\$17.00
144	1958	HALF	3% CURVED CLIP 11:00	VF	MB	\$22.00
145	1964 D	HALF	DOUBLED DIE OBVERSE UNLISTED	UNC	MB	\$15.00
146	1964	HALF	3% CURVED CLIP 7:00	BU	MB	\$15.00
147	1964 D	HALF	2% CLIP 5:30	AU	MB	\$9.50
148	1965	HALF	5% CURVED CLIP 8:00	BU	MB	\$9.50
*	149	1968 D	APROX 40% STRAIGHT CLIP 6:30 TO 11:00 125.8 GRAINS BY WEIGHT	UNC	MB	\$250.00
150	1976	HALF	5% CURVED CLIP 3-4:00	UNC	MB	\$29.00
151	1976 D	HALF	3% CURVED CLIP 8:00	BU	MB	\$22.00
152	1965	HALF	CLAM SHELL OPEN 3:00 TO 10:00 GREAT EXAMPLE	VF	MB	\$39.00
153	1967	HALF	WENT THRU UPSET MILL AFTER STRUCK UNUSUAL ERROR	BU	MB	\$55.00
154	N.D.	HALF	CLAD TYPE 2 PLANCHET	UNC	MB	\$55.00
*	155	1974 D	REV STRUCK THRU A CENT? PLANCHET 75% REV GHOST EAGLE SUPER NEAT	UNC	MB	\$495.00
*	156	1976	CUD REVERSE 10:00 76D-5R	BU	MB	\$55.00
157	1982 P	HALF	MISALIGNED DIE OBVERSE	AU	MB	\$3.00
158	1854	QUAR	WITH ARROWS, MISALIGNED DIE REVERSE WITH HIGH RIM	VF	MB	\$60.00
*	159	1973 D	STRUCK ON NICKEL PLANCHET	AU	MB	\$189.00
*	160	1980 P	STRUCK ON A NICKEL PLANCHET	BU	MB	\$240.00
161	N.D.	QUAR	TYPE 1 90% SILVER BLANK	AU	MB	\$95.00
*	162	1964	HUGE BROADSTRIKE WITH 20% STRAIGHT RAGGED CLIP 9:00 TO 12:00 SCRATCH OBV	UNC	MB	\$345.00
163	1935	QUAR	NICE LAMINATION 8:00-9:00 OBVERSE	BU	MB	\$20.00
164	1956	QUAR	5% CURVED CLIP 11:00 + RIM CLIP 2:00	BU	MB	\$8.50

165	1964 D	QUAR	RIM CLIP 4:00	CHAU	MB	\$6.00
166	N.D.	QUAR	CLAD TYPE 2 PLANCHET	UNC	MB	\$2.50
167	N.D.	QUAR	FAKE COPPER QUARTER SIZE BLANK WITH REEDED EDGE MADE TO DEFRAUD COIN OP MACHINES EDUCATIONAL	UNC	MB	\$3.00
* 168	1965	QUAR	STRAIGHT CLIP 2:00 TO 4:00	BU	MB	\$15.00
169	1965	QUAR	7% C.CLIP 10:30 + RIM CLIP 1:00 + DISK CLIP 8:00	BU	MB	\$12.00
170	1965	QUAR	3% CURVED CLIP 12:30	EF	MB	\$3.50
171	1966	QUAR	3% CURVED CLIP 7:00	AU	MB	\$3.50
172	1967	QUAR	5% CURVED CLIP 5:30	UNC	MB	\$3.50
173	1967	QUAR	DISK CLIP 8:30 + 2% CURVED CLIP 11:00	AU	MB	\$4.50
174	1970 D	QUAR	3% CURVED CLIP 10:30 + DISK CLIP 1:00	BU	MB	\$5.50
175	1970 D	QUAR	3% CURVED CLIP 6:00 + 2 DISK CLIPS AT 3:30 & 8:00	UNC	MB	\$9.50
176	1985 P	QUAR	3% CURVED CLIP 9:30	BU	MB	\$3.50
177	1996 P	QUAR	5% CURVED CLIPS AT 3:00 & 9:00	BU	MB	\$25.00
* 178	198x x	QUAR	DOUBLE STRUCK, 2ND 75% OFF CENTER 4:00 UNIFACE REVERSE	CHBU	MB	\$95.00
179	1966	QUAR	8% OFF CENTER 11:00	BU	MB	\$22.00
* 180	1976	QUAR	LARGE UNCENTERED BROADSTRIKE COUNTER SKID NECK OBV	UNC	MB	\$39.00
181	1983 P	QUAR	UNCENTERED BROADSTRIKE	AU	MB	\$15.00
182	1984 P	QUAR	UNCENTERED BROADSTRIKE	AU	MB	\$12.00
183	1985 P	QUAR	UNCENTERED BROADSTRIKE LOOKS 5% OFF CENTER	BU	MB	\$15.00
184	1982 P	QUAR	5% OFF CENTER 1:30 EDGE DING	AU	MB	\$7.50
* 185	1983 x	QUAR	75% OFF CENTER 1:00	BU	MB	\$45.00
186	1985 P	QUAR	20% OFF CENTER 4:00	BU	MB	\$22.00
* 187	1985 x	QUAR	50% OFF CENTER 1:00	BU	MB	\$45.00
188	1985 P	QUAR	20% OFF CENTER 8:00 OBV COUNTER SKID	BU	MB	\$21.00
189	1989 P	QUAR	20% OFF CENTER 4:00	AU	MB	\$22.00
190	N.D.	QUAR	50% OFF CENTER 6:00	BU	MB	\$42.00
* 191	N.D.	QUAR	50% OFF CENTER WITH LARGE CHAIN EDGE STRIKE	BU	MB	\$75.00
192	N.D.	QUAR	55% OFF CENTER 5:00 + CLASHED DIES POSSIBLE MULTI STRUCK	BU	MB	\$55.00
193	N.D.	QUAR	60% OFF CENTER 7:00	AU	MB	\$35.00
194	N.D.	QUAR	70% OFF CENTER 7:00	BU	MB	\$42.00
195	N.D.	QUAR	80% OFF CENTER 6:00	BU	MB	\$35.00
196	N.D.	QUAR	90% OFF CENTER 6:00 DSBS=DIE STRUCK BOTH SIDES	BU	MB	\$35.00
* 197	1992	QUAR	DIE TRIAL STRIKE VERY WEAK REEDING	UNC	MB	\$65.00
198	1980 P	QUAR	STRUCK TGHRU HEAVY GREASE OBV & REV	UNC	MB	\$7.50
199	1973 D	QUAR	TILTED PARTIAL COLLAR	AU	MB	\$3.50
200	1983 P	QUAR	FLANGED PARTIAL COLLAR + VERY HIGH RIM 3:00	BU	MB	\$10.00
201	1997 P	QUAR	TILTED PARTIAL COLLAR	UNC	MB	\$3.50
202	1983	QUAR	CLOCK OF 12 COINS OFF CENTER AT 12 POSITIONS OF CLOCK WOWER	BU	MB	\$649.00
203	1884 P	QUAR	CUD REVERSE 2:00 WQC-84P-1R	UNC	MB	\$6.00
204	1984 P	QUAR	CUD REVERSE 9:30 WQC-84P-5RB	AU	MB	\$6.00
205	1941 S	QUAR	FS-25-1941S-503	VF	MB	\$12.50
206	1956	QUAR	TYPE 2 REVERSE FS-25-1956-901	AU	MB	\$11.00
207	1957	QUAR	TYPE 2 REVERSE FS-25-1957-901	VF	MB	\$4.00
208	1958	QUAR	TYPE 2 REVERSE FS-25-1958-901	BU	MB	\$18.00
209	1959	QUAR	TYPE 2 REVERSE FS-25-1959-901	VF	MB	\$5.00
210	1960	QUAR	TYPE 2 REVERSE FS-25-1960-901	BU	MB	\$18.00
211	1961	QUAR	TYPE 2 REVERSE FS-25-1961-901	EF	MB	\$6.50







49



50



56



68



52



51



54



55



53



57



64



64



61



63



67





65



60



60



69



79



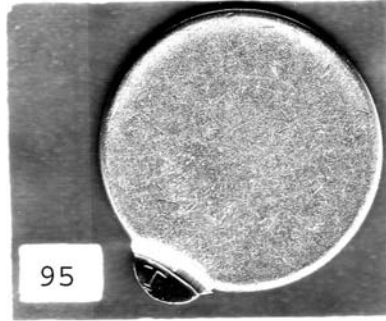
87



88



94



95



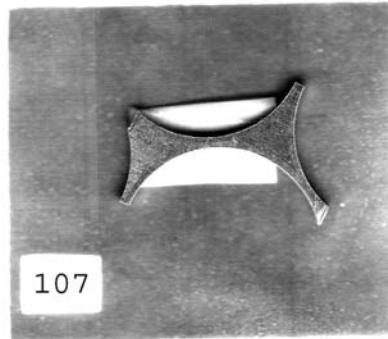
96



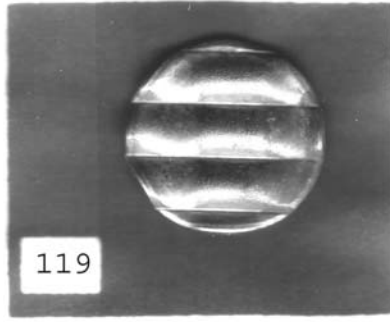
98

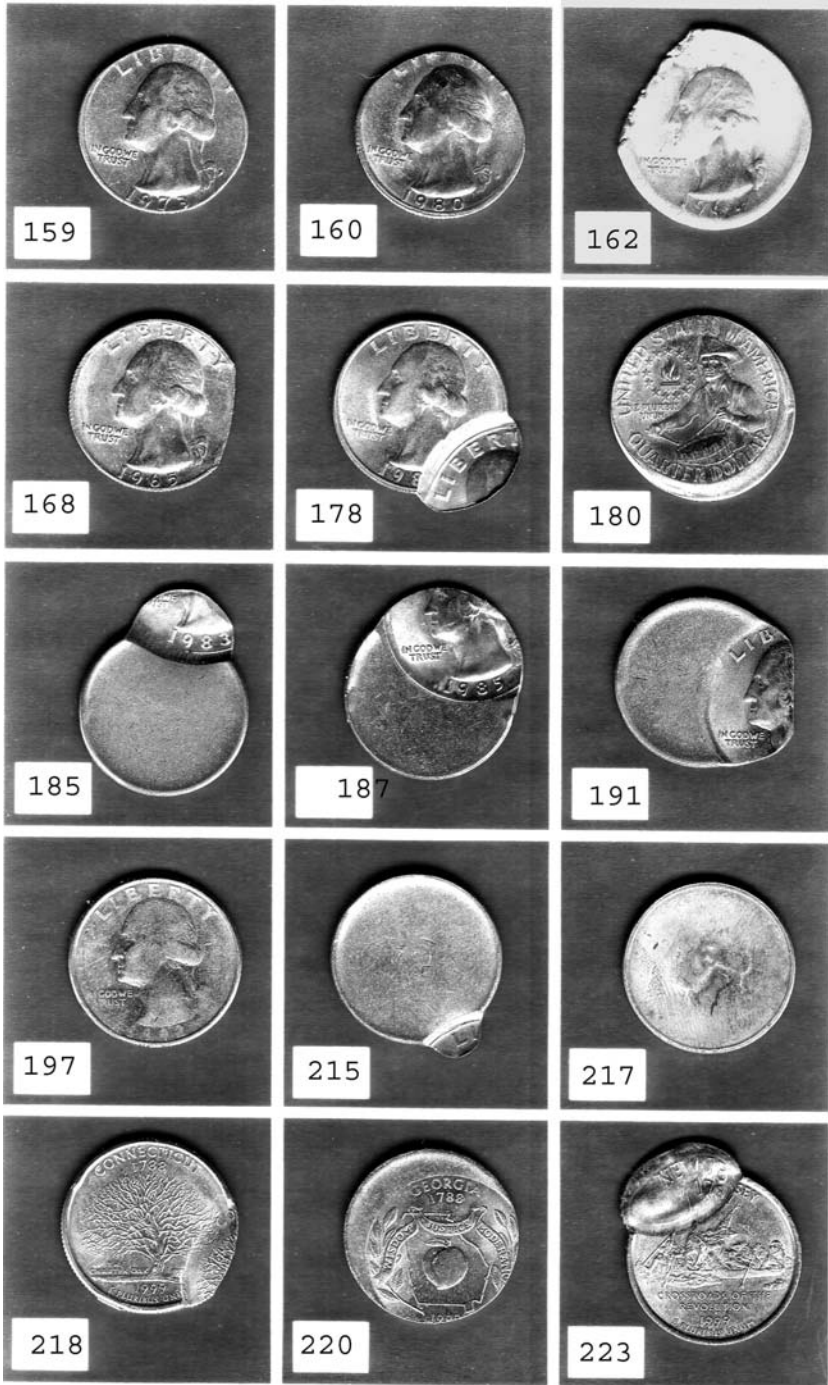


104



107





SUBSCRIPTION FOR THE YEAR 2010  
DON'T MISS ANY OF THESE SALES!  
SEMI-MONTHLY ERROR CATALOGS PUBLISHED FOR THE PAST 22 YEARS!

THE SUBSCRIPTION PRICE IS \$8.00 FOR SIX CATALOGS ON A SEMI-MONTHLY BASIS. COST OF PRINTING AND MAILING THE LAST CATALOG WAS \$2.06 EACH. WE DON'T MIND SENDING CATALOGS TO COLLECTORS OF CATALOGS IF YOU SHARE IN THE COST OF THE CATALOGS.

WE WILL AUTOMATICALLY BILL \$8.00 SUBSCRIPTION DUES TO ALL WINNING BIDERS WHO HAVE NOT YET PAID UNLESS OTHERWISE PAID OR INFORMED.

WE HAVE A FULL SERVICE COIN & STAMP STORE THAT IS LOCATED IN HILLDALE MALL IN MADISON, WI. PLEASE FEEL FREE TO STOP BY IF YOU ARE IN TOWN.

WE ARE ALSO ENTHUSIASTIC BUYERS OF ALL ERRORS AS WELL AS NORMAL COINS, STAMPS AND COLLECTIBLE RED/BLUE BOOKS!

PLEASE VISIT OUR WEB SITE AT [www.Jimscoins.com](http://www.Jimscoins.com) MANY OF THE PHOTOS IN THE WEB SITE VERSION ARE \*FULL COLOR\*.

NEW PROGRAM: FREE CONECA MEMBERSHIP UPON REQUEST FOR NEW MEMBERS WITH WINNING BIDS TOTALLING \$50 OR MORE.

CONSIGNORS: GETTING TOUGHER TO FIND ERRORS TO FILL THE AUCTIONS. IF YOU HAVE SOME TO SELL OR CONSIGN, PLEASE LET US KNOW. TERMS ARE 15% COMMISSION, YOU SET THE MINIMUM BID AND NO CHARGE IF THE COIN DOES NOT SELL. ALSO BID GENEROUSLY SO WE CAN AFFORD TO BUY SOME MORE. HEH-HEH. -LEN & JIM

NOTES FOR J-37: HERE'S WISHING ALL A HEALTHY AND PROSPEROUS NEW YEAR! HOPE SANTA WAS GOOD TO EVERYONE. IF NOT, THEN YOU CAN STILL GET WHAT YOU REALLY WANT IN THIS VERY SALE-SOME REALLY GOOD ERRORS. DON'T MISS THIS HISTORIC OPPORTUNITY TO BID IN THE FIRST ERROR SALE OF THE DECADE! -LEN & JIM

NAME \_\_\_\_\_

ADDRESS \_\_\_\_\_

CITY \_\_\_\_\_ STATE \_\_\_\_\_ ZIP \_\_\_\_\_

PHONE (OPTIONAL) \_\_\_\_\_

YOUR ADDRESS LABEL HAS A YEAR ON IT SO YOU WILL KNOW WHEN YOUR SUBSCRIPTION EXPIRES.

THANKS AGAIN TO ALL OF YOU! -LEN & JIM





**NEW DISCOVERY SMOOTH EDGE PRESIDENTIAL  
DOLLARS**

Here is a collection of smooth edge presidential dollars which have the edge lettering fully missing. They are being offered on consignment for direct sale. This is a prime opportunity, as many of these are extremely rare.

2007 Washington Smooth edge PCGS-66 \$129

2007 Washington Satin Finish from mint set smooth edge with strong clashed dies. Only one graded with satin Finish.  
PCGS-66 \$2800

2007 Adams smooth edge PCGS-65 \$395

2007 Adams Very strong doubled edge lettering, inverted or overlapping, your choice. MS-63 \$57, NGC-64 \$65, NGC-65 \$79, NGC-66 \$495 (rare in MS-66)

2007 Jefferson Smooth Edge PCGS-66 \$1200

2008 James Monroe Satin Finish Smooth Edge PCGS-65 \$695,  
PCGS-66 \$875, PCGS-67 \$1100, PCGS-68 \$1750

2008 James Monroe Non-Satin Finish Smooth edge, only one graded in all grades PCGS-65 \$4500

2009 Sacagawea Smooth edge PCGS-65, only three graded in all grades. \$3500

LAYAWAY AVAILABLE. SEIZE THE DAY! GET 'EM WHILE THEY'RE AVAILABLE!



227



228



233



241



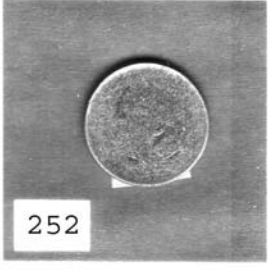
242



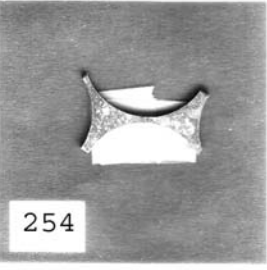
246



251



252



254



258



266



267



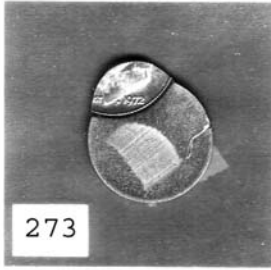
268



269



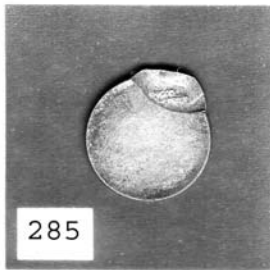
271



273



277



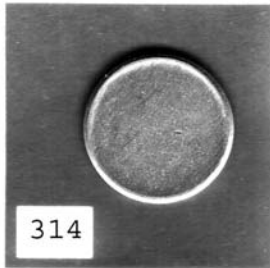
285



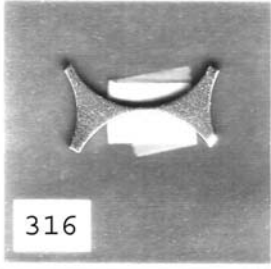
290



299



314



316



319



320



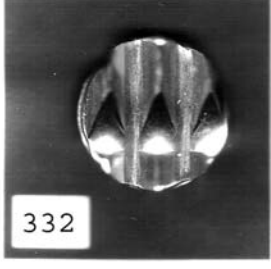
325



327



329



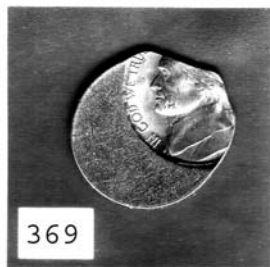
332



334



335





412



413



414



416



418



421



427



432



433



444



445



459



489



575



579

212	1962	QUAR	TYPE 2 REVERSE	FS-25-1962-901	AU	MB	\$15.00	
213	1963	QUAR	TYPE 2 REVERSE	FS-25-1963-901	AU	MB	\$8.00	
214	1964	QUAR	TYPE 2 REVERSE	FS-25-1964-901 PROOF	VF	MB	\$5.00	
			REVERSE					
*	215	N.D.	QUAR	95% OFF CENTER 4:30 DIE STRK BOTH SIDES	BU	MB	\$28.00	
	216	1983	P	QUAR	18% OFF CENTER 10:30 LOW MINTAGE DATE	BU	MB	\$23.00
*	217	1999	QUAR	CT, VERY WEAK TRIAL STRIKE, WEAK REEDING, JUST GHOAST OF IMAGE	UNC	MB	\$125.00	
*	218	1999	P	QUAR	CT, DOUBLE STRUCK, 2ND 75% OFF CENTER 4:00	BU	MB	\$349.00
	219	1999	P	QUAR	CT, UNCENTERED BROADSTRIKE	BU	MB	\$23.00
*	220	1999	P	QUAR	GA, 20% OFF CENTER 1:30	BU	MB	\$85.00
	221	1999	P	QUAR	GA, UNCENTERED BROADSTRIKE	BU	MB	\$22.00
	222	1999	P	QUAR	GA, WITH UNUSUAL HEAVY POLISH LINES	BU	MB	\$1.50
*	223	1999	P	QUAR	NJ, DOUBLE STRUCK, 2ND 70% OFF CENTER 6:30 UNIFACE REV	BU	MB	\$349.00
	224	1999	D	QUAR	NJ, BROADSTRUCK WITH PARTIAL COLLAR	BU	MB	\$15.00
	225	2000	P	QUAR	NH, UNCENTERED BROADSTRIKE, LOOKS 10% OFF CENTER	BU	MB	\$25.00
	226	2000	P	QUAR	MA, PARTIAL COLLAR STRIKE	BU	MB	\$12.00
*	227	2000	P	QUAR	VA, 15% OFF CENTER 11:00	BU	MB	\$45.00
*	228	2001	P	QUAR	VT, OBVERSE CLAD LAYER OFF BEFORE STRUCK	UNC	MB	\$215.00
	229	2001	D	QUAR	NY, TILTED PARTIAL COLLAR LOOKS OFF CENTER	BU	MB	\$15.00
	230	2002	D	QUAR	MS, UNCENTERED BROADSTRIKE WITH SLIGHT PARTIAL COLLAR	BU	MB	\$24.50
	231	2002	D	QUAR	IN, UNCENTERED BROADSTRIKE JUST TOUCHED BY COLLAR	BU	MB	\$35.00
	232	2003	P	QUAR	IL, SINTERED PLANCHET LUSTERIOUS BLACK BEAUTY NEAT!	BU	MB	\$55.00
*	233	2007	D	QUAR	UT, STRUCK ON ELLIPTICAL CLIPPED PLANCHET 22mm GEMMY COIN	CHBU	MB	\$350.00
	234	2008	P	QUAR	AZ, STRUCK IN RETAINED BLACK MINT GRIME AROUND EDGE OBV	BU	MB	\$5.00
	235	2008	P	QUAR	OK, HEAVY DIE SCRATCHES, LOOKS LIKE WIND FROM BIRD	BU	MB	\$1.75
	236	2008	P	QUAR	NM, STRUCK THRU OBVERSE LIKE GEORGE BLOWING SMOKE	BU	MB	\$11.50
	237	2005	D	QUAR	CALIF, TILTED PARTIAL COLLAR + BROADSTRUCK	BU	MB	\$23.00
	238	2005	P	QUAR	MN, EXTRA EAR LOBE DDO	BU	MB	\$15.00
	239	2006	P	QUAR	CO, UNCENTERED BROADSTRIKE WITH PARTIAL COLLAR	BU	MB	\$19.00
	240	2006	P	QUAR	CO, CUD REVERSE 9:00	BU	MB	\$14.00
*	241	2006	P	QUAR	SD, 25% OFF CENTER, UNUSUAL CUT OBV & REV ALMOST LIKE STRK THRU, V RARE DATE	BU	MB	\$299.00
*	242	2006	D	QUAR	NV, DRAMATIC MAJOR "FOOTBALL" SHAPED ELLIPTICAL CLIPPED PLANCHET	BU	MB	\$350.00
	243	2003	P	QUAR	IL, TILTED PARTIAL COLLAR BROADSTRIKE	BU	MB	\$24.00
	244	2003	P	QUAR	IL, UNCENTERED BROADSTRIKE WITH PARTIAL COLLAR	BU	MB	\$24.50
	245	2004	D	QUAR	TX, TILTED PARTIAL COLLAR	BU	MB	\$16.00
*	246	(2002)	QUAR	LA, AMAZING EXAAMPLE OF GREASE FILLED DIE STRIKE, VERY LITTLE DETAILS	UNC	MB	\$75.00	
	247	1940	D	DIME	RPM #2	BU	MB	\$25.00
	248	1943	S	DIME	RPM #1 FS-10-1943S-501	VF20	MB	\$7.00
	249	1964	D	DIME	RPM #2	BU	MB	\$10.00
	250	1965	DIME	RIM CUD3:00 TO 4:00	AU	MB	\$1.50	
*	251	1962	D	DIME	LARGE LAMINATION FLAP ACROSS OBV + SOME STRUCK THRU NEAT	UNC	MB	\$7.00
*	252	N.D.	DIME	WOWSER DIE ADJUSTMENT STRIKE, PRIME EXAMPLE	UNC	MB	\$25.00	

253 N.D.	DIME	TYPE 2 CLAD PLANCHET	UNC	MB	\$1.50
* 254 N.D.	DIME	CLAD "BOWTIE" PIECE CHOPPED SCRAP WEBBING	UNC	MB	\$5.00
255 1907 D	DIME	UNCENTERED BROADSTRIKE, NO REEDING BARBER DIME	GD	MB	\$65.00
256 1944	DIME	STRAIGHT CLIP 6:30 TO 8:00	EF	MB	\$16.00
257 19(5)x	DIME	STRAIGHT CLIP 4:00 TO 7:00	AU	MB	\$8.50
* 258 196X	DIME	CLAD, STRAIGHT CLIP 3:00 TO 5:00	BU	MB	\$6.00
259 1942	DIME	3% CURVED CLIP 10:30	VF	MB	\$8.00
260 1943	DIME	DISK CLIP 8:00	BU	MB	\$12.00
261 1944	DIME	DISK CLIP 5:30	AU	MB	\$6.50
262 1944	DIME	2% CLIP 2:00	VF	MB	\$8.00
263 1953 S	DIME	RIM CLIP 9:00	FINE	MB	\$3.50
264 1964 D	DIME	10% CURVED CLIP 2:30 + DISK CLIP 12:00	AU	MB	\$3.50
265 1964 D	DIME	4% CURVED CLIP 3:00 + RIM CLIP 12:30	AU	MB	\$2.50
* 266 1967	DIME	25% CURVED CLIP 12:30	BU	MB	\$18.00
* 267 196(7)	DIME	10% CURVED CLIP 2:00 + 5% C.CLIP 5:00	BU	MB	\$8.00
* 268 1975 D	DIME	32% CURVED CLIP 11:00	AU	MB	\$28.00
* 269 1964 D	DIME	NICE CUD TOP HEAD, RDC-64D-1B	AU	MB	\$59.00
270 2004 P	DIME	OBVERSE CLAD LAYER OFF BEFORE STRUCK NEAT RED/BRN	UNC	MB	\$95.00
* 271 2006 P	DIME	OBVERSE CLAD LAYER OFF BEFORE STRUCK BRIGHT RED	BU	MB	\$115.00
272 1972	DIME	30% OFF CENTER 9:00	BU	MB	\$35.00
* 273 1972	DIME	75% OFF CENTER 11:00 SCRATCH & COUNTER SKID ON BLANK AREA OBV	BU	MB	\$21.00
274 197(3)	DIME	55% OFF CENTER 1:00	BU	MB	\$35.00
275 1979	DIME	40% OFF CENTER 1:30	BU	MB	\$26.00
276 1973	DIME	50% OFF CENTER 1:00	BU	MB	\$29.00
* 277 1980 P	DIME	50% OFF CENTER 12:00	BU	MB	\$28.00
278 1984 D	DIME	60% OFF CENTER 1:00	BU	MB	\$32.00
279 1988 P	DIME	40% OFF CENTER 1:00	BU	MB	\$28.00
280 1989 D	DIME	50% OFF CENTER 11:00	BU	MB	\$28.00
281 1989 P	DIME	60% OFF CENTER 1:00	UNC	MB	\$22.00
282 1990 P	DIME	70% OFF CENTER 10:30 UNIFACE REVERSE	UNC	MB	\$22.00
283 1995 D	DIME	50% OFF CENTER 1:00	BU	MB	\$21.00
284 1997 P	DIME	35% OFF CENTER 1:00	BU	MB	\$18.00
* 285 N.D.	DIME	SILVER, 77% OFF CENTER 1:30 WITH CHAIN STRIKE EDGE DSBS	UNC	MB	\$115.00
286 1xxx x	DIME	70% OFF CENTER 1:00	BU	MB	\$13.00
287 N.D.	DIME	CLAD, 50% OFF CENTER 4:00	BU	MB	\$14.00
288 2001 D	DIME	LOT OF 10 COINS BROADSTRUCK 10 COINS	AU/U	MB	\$24.00
289 2001 D	DIME	LOT OF 5 COINS ALL BROADSTRUCK, 5 COINS	AU/U	MB	\$12.00
* 290 1999 P	DIME	LARGE CENTERED BROADSTRIKE PEELING OFF REEDING REV, MULTI STRIKE?	BU	MB	\$19.00
291 1996 P	DIME	TILTED PARTIAL COLLAR + BROADSTRUCK REEDING EXPANDED=MULTI STRIKE	BU	MB	\$12.00
292 1999 P	DIME	EXTREMELY HIGH RIMS	UNC	MB	\$10.00
293 1973 D	DIME	10% INDENT 8:00 OBVERSE	AU	MB	\$12.00
294 1910	NICK	WITH 50% CLAMSHELL SPLIT 8:00	EF	MB	\$110.00
295 1910	NICK	DEEP LAMINATION OUT 7:00 OBVERSE	VG	MB	\$2.50
296 1937	NICK	HEAVY STRUCK THRU ON HEAD OBVERSE, LITE SCRATCH OBV	FIN	MB	\$5.00
297 1938 D	NICK	REPUNCHED MINT MARK #2	CHBU	MB	\$35.00
298 1935	NICK	3% CURVED CLIP 3:00	FIN	MB	\$12.00
* 299 1913	NICK	LAMINATION OBV 10:00 TO CHIN TYPE 1	BU	MB	\$25.00
300 1916	NICK	LAMINATION REVERSE ACROSS FRONT LEGS	GD	MB	\$3.00
301 1917 D	NICK	LAMINATION REVERSE 8:00 TO FRONT LEG	FIN	MB	\$10.00



302	1918 S	NICK	LAMINATION REVERSE 1:00 TO 6:00	AG	MB	\$5.00
303	1919 S	NICK	LAMINATIONS OBV & REV	GD	MB	\$3.00
304	1923 S	NICK	LAMINATIONS OBV 2:00 ACROSS FOREHEAD	FIN	MB	\$7.00
305	1924 D	NICK	LAMINATION BACK OF HEAD & FEATHER	VG	MB	\$4.00
306	1924 D	NICK	LAMINATION REV 5:00	VG	MB	\$3.00
307	1916 S	NICK	LAMINATION CENTER OF HEAD OBV	FIN	MB	\$10.00
308	1925 S	NICK	2 FEATHERS VARIETY, STRONG DIE CLASH UNDER CHIN	GD	MB	\$30.00
309	1935	NICK	DOUBLED DIE REVERSE 1-R-V FS-05-1935-801	VG	MB	\$45.00
310	1936 S	NICK	RPM #1 FS-05-1936S-501	VG	MB	\$15.00
311	1936 S	NICK	RPM #2	VF	MB	\$5.00
312	1937 D	NICK	RPM #1	FIN	MB	\$4.75
313	1938 D	NICK	RPM #2	FIN	MB	\$5.50
314	N.D.	NICK	TYPE 2 PLANCHET WITH UPSET FOUND ON BUFFALO NICKELS	BU	MB	\$65.00
*	315 N.D.	NICK	TYPE 2 PLANCHET	UNC	MB	\$9.00
*	316 N.D.	NICK	"BOW TIE: LIKE WEBBING SCRAP FROM NICKELS	UNC	MB	\$6.00
317	N.D.	NICK	SAME AS LOT 316 ONLY A LOT OF 10 PIECES NICKEL BOW TIES	UNC	MB	\$47.00
318	N.D.	NICK	SAME AS LOT 316 ONLY LOT OF 5 PIECES ALL BOW TIE LIKE	UNC	MB	\$27.00
*	319 1968 D	NICK	STRUCK ON CENT PLANCHET TOUGH DATE	UNC	MB	\$460.00
*	320 1999 D	NICK	STRUCK ON STRUCK CENT LOTS OF DETAILS SCRAP O & R DOUBLE DENOMINATION	UNC	MB	\$695.00
321	1967 P	NICK	CUD OBVERSE 5:00 JNC-67-2	BU	MB	\$4.00
322	1971 D	NICK	CUD OBV BASE SHOULDER JNC-71D-5	EF	MB	\$5.00
323	1981 P	NICK	CUD OBVERSE 3:00 JNC-81P-3	AU	MB	\$9.00
324	1982 P	NICK	CUD OBVERSE TOP HEAD JNC-82P-2B	BU	MB	\$6.00
*	325 1982 P	NICK	CUD OBVERSE BACK OF HEAD JNC-82P-2B	BU	MB	\$4.00
326	1983 P	NICK	CUD OBVERSE TOP OF HEAD JNC-83P-12B	BU	MB	\$5.00
*	327 1983 P	NICK	CUD OBVERSE 9:30 JNC-83P-3	BU	MB	\$4.00
328	1984 P	NICK	CUD OBVERSE 5:00 JNC-84P-1A	AU+	MB	\$6.00
*	329 1987 P	NICK	CUD OBVERSE 5:00 JNC-87P-1	BU	MB	\$6.00
330	1944 P	NICK	CLAMSHELL SPLIT 3:00 TO 9:30	VF	MB	\$65.00
331	1945 P	NICK	MULTI LAMINATION STREAKS OBVERSE	AU	MB	\$2.50
*	332 N.D.	NICK	WAFFLED NICKEL BLANK NEAT!!	BU	MB	\$16.00
333	1968 S	NICK	STRUCK THRU CRINKLED CAPPED DIE	BU	MB	\$20.00
334	N.D.	NICK	STRUCK WITH EARLY STAGE MIRROR BROCKAGE REV ON OBVERSE WITH WIDE SPLIT DIE WOWSER!!	BU	MB	\$450.00
*	335 1983 P	NICK	STRUCK THRU LATE STAGE CAPPED DIE	UNC	MB	\$35.00
336	1939	NICK	DOUBLED DIE REVERSE #1 VERY STRONG	EF	MB	\$65.00
337	1939	NICK	3% CURVED CLIP 10:00	VF	MB	\$3.00
338	1945 P	NICK	3% CURVED CLIP 6:00	EF	MB	\$1.95
339	1945 P	NICK	RIM CLIP 1:00	AU	MB	\$1.95
340	1956	NICK	RIM CLIP 3:00	VF	MB	\$1.00
341	1960	NICK	2% CURVED CLIP 11:30 + RIM CLIP 6:30	EF	MB	\$1.50
342	1964 D	NICK	3% CURVED CLIP + RIM CLIP	AU	MB	\$1.50
343	1968 S	NICK	5% CURVED CLIP TOUGHER DATE	BU	MB	\$1.75
344	1949 D	NICK	3% CURVED CLIP 7:00 FEW SPOTS	VF	MB	\$2.50
345	1956	NICK	RIM CLIP 5:00	EF	MB	\$2.00
346	1960	NICK	3% CURVED CLIP 1:30	VF	MB	\$2.50
347	1963	NICK	RIM CLIP 12:00 + 3% CURVED CLIP 3:00	VF	MB	\$2.50
348	1963 D	NICK	STRAIGHT CLIP 6:30 TO 8:00	EF	MB	\$2.50
349	1954 D	NICK	RPM SOUTH	CHBU	MB	\$3.50
350	1964 D	NICK	5% CURVED CLIP 10:30	EF	MB	\$2.00
351	1976 D	NICK	3% CURVED CLIP 9:00	EF	MB	\$2.00
*	352 2006 D	NICK	12% CURVED CLIP 10:00 + 5% CURVED CLIP 8:00	UNC	MB	\$95.00

ON THE NEW JEFFERSON NICK						
* 353	1949 D	NICK	10% OFF CENTER 4:00	UNC	MB	\$290.00
* 354	1963)	NICK	50% OFF CENTER 7:30	BU	MB	\$75.00
355	(1964D)	NICK	60% OFF CENTER 8:00 REV MINT MARK FROM 64D BAG	UNC	MB	\$18.00
356	1966	NICK	10% OFF CENTER 1:00 SCARCE DATE	BU	MB	\$65.00
357	1972	NICK	40% OFF CENTER 11:00	BU	MB	\$45.00
358	XX75 D	NICK	50% OFF CENTER 12:00 COUNTER SKID ON BLANK AREA	BU	MB	\$27.00
* 359	1976 D	NICK	80% OFF CENTER 10:00 DSBS	BU	MB	\$45.00
* 360	1978 P	NICK	50% OFF CENTER 10:00	BU	MB	\$28.00
361	1979	NICK	55% OFF CENTER 10:00 DSBS	BU	MB	\$24.00
362	1981 P	NICK	25% OFF CENTER 9:00	UNC	MB	\$16.00
363	1994 P	NICK	35% OFF CENTER 11:00	BU	MB	\$22.00
364	1995 P	NICK	50% OFF CENTER 10:30 SMALL BLACK SPOTS NOT DISTRACTING	UNC	MB	\$15.00
365	1999 P	NICK	35% OFF CENTER 10:30	CHBU	MB	\$16.00
366	N.D.	NICK	90% OFF CENTER 4:00 UNIFACE REV + 98% O/C UNIFACE	BU	MB	\$16.00
367	N.D.	NICK	85% OFF CENTER 12:00 DSBS	BU	MB	\$10.50
368	N.D.	NICK	70% OFF CENTER 8:00 NICE UNFACE STRETCH STRIKE	BU	MB	\$16.00
369	N.D.	NICK	45% OFF CENTER 2:00 DSBS + DOUBLE CHAIN EDGE & CLASHED DIES	BU	MB	\$24.00
* 370	N.D. P	NICK	30% OFF CENTER 1:00	BU	MB	\$14.00
* 371	1875	NIK3c	NICE CUD REVERSE 11:00 TCNC-1875-1R	VF	MB	\$39.00
372	1788	CENT	VERMONT COLONIAL WITH DEEP LAMINATION REVERSE	FIN	MB	\$110.00
* 373	1856	1/2C	HALF CENT WITH 2% CURVED CLIP 2:00	FIN	MB	\$55.00
374	1797	CENT	DOUBLE STRUCK, 2ND SHOWS 1797/179 ON REV AMER OVER AMERICA	FIN	MB	\$449.00
375	1853	CENT	2% CLIPPED PLANCHET 11:00	VG	MB	\$39.00
376	1893	CENT	NEAT DOUBLE STRUCK INDIAN 2ND 20% OFF CENTER 2 DATES VISABLE	VF	MB	\$750.00
* 377	1862	CENT	OBVERSE RIM CUDS 11:00 & 12:00	FIN	MB	\$19.00
378	1863	CENT	RETAINED CUD REVERSE 10:30 ICN-1863-22RA-RET	FIN	MB	\$19.00
379	1863	CENT	RETAINED CUD REVERSE 3:00 ICN-1863-29R-RET	GD	MB	\$21.00
* 380	1864	CENT	BRONZE, CUD REVERSE 8-10:00 IC-1864-7R	GD	MB	\$79.00
381	1864	CENT	BRONZE, 8% CURVED CLIP 3:00	GD	MB	\$29.00
382	1873	CENT	5% CURVED CLIP 8:00	VG	MB	\$32.00
383	1887	CENT	CUD REVERSE 9:00 TO 10:00 IC-1887-3RB	GD	MB	\$39.00
384	N.D.	CENT	COPPER TYPE 1 WITH 38% CURVED CLIP	UNC	MB	\$32.00
385	N.D.	CENT	COPPER TYPE 2 PLANCHET	UNC	MB	\$0.50
386	1952 D	CENT	STRUCK ON SILVER DIME PLANCHET LIGHTLY CLEANED BUT LOOKS GREAT	BU	MB	\$525.00
* 387	1964 D	CENT	STRUCK ON SILVER DIME PLANCHET LIGHT RUB ON HEAD	UNC	MB	\$495.00
* 388	1968	CENT	STRUCK ON DIME PLANCHET RARE DATE	BU	MB	\$650.00
389	1995	CENT	95% UNPLATED OBV + 100% UNPLATED REVERSE	UNC	MB	\$55.00
390	1946	CENT	FOOTBALLISH SHAPE ELLIPTICAL CLIPPED PLANCHET	UNC	MB	\$85.00
* 391	1940 S	CENT	RETAINED CUD REVERSE 9:00 LC-40S-20R-RET	EF	MB	\$3.50
392	1943	CENT	CUD OBVERSE 7:00 LC-43-35	VF	MB	\$12.00
393	N.D.	CENT	WHEAT WITH LARGE CUD OBVERSE 2:00 TO 5:00 LC-ND-13A-WHEAT	VF	MB	\$79.00
* 394	1936	CENT	CUD OBVERSE 7:00 LC-36-7	EF	MB	\$14.00
395	1940 S	CENT	UNLISTED RET CUD REVERSE 3:00 TO 4:30	BU	MB	\$3.00
396	1941	CENT	CUD OBVERSE 7:30 LC-41-3	EF	MB	\$10.00

397	1943	CENT	UNLISTED RETAINED CUD REVERSE 2:00	EF	MB	\$4.00
398	1943 S	CENT	UNLISTED RETAINED CUD REVERSE 8:30 TO 10:00	VF	MB	\$3.00
399	1943 S	CENT	CUD OBVERSE 7:00 LC-43S-3	VF	MB	\$6.00
400	1944	CENT	CUD OBVERSE 7:00 LC-44-1	EF+	MB	\$10.00
401	1944	CENT	CUD OBVERSE 7:00 LC-44-14	EF	MB	\$7.00
402	1945	CENT	CUD REVERSE 3:00 LC-45-3R	EF	MB	\$8.00
403	1945	CENT	CUD REVERSE 10:00 LC-45-4RB	EF	MB	\$14.00
404	1946	CENT	CUD REVERSE 4:00 LC-46-3RB	EF	MB	\$9.00
405	1959 D	CENT	CUD OBVERSE 7:00 LC-59D-6	EF	MB	\$5.00
406	1964 D	CENT	CUD OBVERSE 7:00 LC-64D-4	AU	MB	\$3.00
407	1966	CENT	CUD OBVERSE 7:00 LC-66-18	UNC	MB	\$6.00
*	408	1970 S	CENT CUD OBVERSE 12:00 TO 2:00 LC-70S-1	BU	MB	\$19.00
409	1970 S	CENT	CUD OBVERSE 6:00 LC-70S-3	BU	MB	\$5.00
410	1971 D	CENT	CUD OBVERSE 6:00 LC-71D-1	EF	MB	\$5.00
411	1971 D	CENT	CUD OBVERSE 5:30 LC-71D-4	BU	MB	\$4.00
*	412	1977	CENT CUD OBVERSE 10:00 ATHIEST LC-77-6A	AU	MB	\$8.00
*	413	1977	CENT CUD OBVERSE 2:00 LC-77-11	UNC	MB	\$4.00
*	414	1980	CENT CUD OBVERSE 12:00 1:00 LC-80-16	EF	MB	\$10.00
415	1982	CENT	CUD OBVERSE 2:30 LC-80LD-1B	BU	MB	\$5.00
*	416	1982	CENT LARGE CUD OBVERSE 8-10:00 LC-82LD-18B	AU	MB	\$26.00
417	1982	CENT	CUD OBVERSE 10:00 LC-82LD-13	UNC	MB	\$4.00
*	418	1982	CENT CUD OBVERSE 12:30 LC-82LD-19	BU	MB	\$4.00
419	1983	CENT	CUD OBVERSE 2:30 LC-83-21	BU	MB	\$4.00
420	1983	CENT	CUD OBVERSE 5:00 LC-83-29	BU	MB	\$3.00
*	421	1984	CENT CUD OBVERSE 10:00 LC-84-6	UNC	MB	\$8.00
422	1984	CENT	CUD OBVERSE 5:30 LC-84-37	UNC	MB	\$4.00
423	1984	CENT	CUD OBVERSE 10:00 LC-84-7	BU	MB	\$5.00
424	1984	CENT	CUD OBVERSE 5:00 LC-84-41	BU	MB	\$3.00
425	1984	CENT	CUD OBVERSE 11:00 LC-84-50	BU	MB	\$4.00
426	1985	CENT	CUD OBVERSE 6:00 LC-85-18	BU	MB	\$2.00
*	427	1986	CENT LARGE CUD OBVERSE TOP OF HEAD LC-86-2	UNC	MB	\$16.00
428	1986	CENT	CUD OBVERSE 5:30 LC-86-8	BU	MB	\$4.00
429	1986	CENT	CUD OBVERSE 5:30 LC-86-9	BU	MB	\$4.00
430	1995	CENT	CUD OBVERSE 6:00 LC-95-3	UNC	MB	\$4.00
431	1995	CENT	CUD OBVERSE 9:30 SMALL LC-95-6	BU	MB	\$2.00
*	432	1997	CENT HUGE CUD OBVERSE 11:00 TO 2:00 LC-97-01	BU	MB	\$27.00
*	433	N.D.	CENT CUD OBVERSE OVER MOST DATE LC-ND-39	BU	MB	\$7.00
434	1907	CENT	IMPROPER METAL MIX BRASS STREAKS 1:00 TO 6:00	FIN	MB	\$2.50
435	1955	CENT	POORMANS DOUBLE DIE + STRONG CRACKED SKULL	BU	MB	\$2.50
436	1955	CENT	CRACKED SKULL DIE BREAK	BU	MB	\$1.50
437	1955 D	CENT	CRACKED SKULL	BU	MB	\$1.50
438	1972 D	CENT	DIE CRACK REVERSE 6:00 TO STEPS	AU	MB	\$1.50
439	1972	CENT	UNCENTERD BROADSTRIKE	UNC	MB	\$6.00
440	1972 D	CENT	5% MISALIGNED DIE OBVERSE 8:00	UNC	MB	\$1.50
441	1964	CENT	HIGH RIMS	BU	MB	\$1.50
442	1947 S	CENT	NICE CUD OBVERSE 7:00 LC-47S-1	BU	MB	\$24.00
443	1957	CENT	BIE DIE BREAK LIBIERTY	EF	MB	\$0.50
*	444	1982	CENT L.D.C, 45% STRAIGHT CLIP 7:00	BU	MB	\$45.00
*	445	(1964)	CENT STRAIGHT CLIP 12:00 TO 5:00 NO DATE FOUND IN 1964 ROLL	BU	MB	\$45.00
446	1913	CENT	2% CURVED CLIP 4:30	VF	MB	\$8.00
447	1939	CENT	RIM CLIP 6:30	VF	MB	\$1.50
448	1940	CENT	3% CURVED CLIP 5:00 RED	BU	MB	\$8.50
449	1940	CENT	RIM CLIP 6:30	EF	MB	\$1.00
450	1940	CENT	RIM CLIP 1:00	EF	MB	\$1.00

451	1942	CENT	RIM CLIP 3:00	VF	MB	\$1.00
452	1944	CENT	RIM CLIP 7:00	EF	MB	\$1.00
453	1944	CENT	RIM CLIP 2:00 COUNTER SKID	EF	MB	\$0.50
454	1945 S	CENT	NICE RIM CLIP 5:00	UNC	MB	\$4.50
455	1946 S	CENT	2% CURVED CLIP 10:30	VF	MB	\$1.50
456	1959	CENT	DUBL 2% CURVED CLIPS AT 9:00 & 12:00	AU	MB	\$2.50
457	1961	CENT	RIM CLIP 3:30	AU	MB	\$1.50
458	1964 D	CENT	3% CURVED CLIP 11:30	UNC	MB	\$1.50
* 459	1967	CENT	30% CURVED CLIP 7:00	BU	MB	\$28.00
460	1968 S	CENT	3% CURVED CLIP 3:30	AU	MB	\$2.50
461	1969 D	CENT	3% CURVED CLIP 8:00	AU	MB	\$1.50
462	1969 S	CENT	RIM CLIP 2:00	BU	MB	\$3.00
463	1985 D	CENT	10% CURVED CLIP RED	BU	MB	\$12.00
464	N.D.	CENT	25% CURVED CLIP 4:00 COPPER	BU	MB	\$12.00
465	1968	CENT	10% OFF CENTER 1:00	UNC	MB	\$16.00
466	1969 D	CENT	60% OFF CENTER 10:00 CHAIN STRIKE EDGE	BU	MB	\$27.00
467	1984	CENT	30% OFF CENTER 1:00	UNC	MB	\$8.00
468	1984	CENT	30% OFF CENTER 1:00 ZINC	UNC	MB	\$10.00
469	1987	CENT	60% OFF CENTER 8:00 UNIFACE STRETCH STRIKE	UNC	MB	\$14.00
470	1988(D)	CENT	60% OFF CENTER 7:30 RED	BU	MB	\$16.00
471	2003	CENT	5% OFF CENTER DETAILS MISSING REVERSE	BU	MB	\$8.50
472	2003	CENT	10% OFF CENTER 8:00 EDGE SCRAPE	BU	MB	\$10.00
473	N.D.	CENT	TYPE 1 COPPER BLANKS LOT OF 4	UNC	MB	\$3.95
474	1972	CENT	DOUBLED DIE #1	AU	MB	\$325.00
475	2000 P	CENT	WIDE AM VARIETY	BU	MB	\$10.00
476	1917	CENT	LAMINATION OBV DATE TO FACE	GD	MB	\$0.50
477	1918 S	CENT	LAMINATION REVERSE 4:00 TO 7:00	FIN	MB	\$1.00
478	1929	CENT	LAMINATION MAJOR OBVERSE	VG	MB	\$2.50
479	1930 S	CENT	LAMINATION OBVERSE 7:00 TO 11:00	FIN	MB	\$1.75
480	1934	CENT	LAMINATION OBVERSE 1:00 TO 5:00	VG	MB	\$1.00
481	193(4)	CENT	LAMINATION OBVERSE 2:00 TO 4:00	VG	MB	\$0.50
482	1941	CENT	LAMINATION LARGE IN FIELD FRONT OF FACE	GD+	MB	\$1.25
483	1942 D	CENT	LAMINATION LARGE CHIN INTO FIELD	FIN	MB	\$1.00
484	1946	CENT	LAMINATION OBVERSE 12:00 TO 3:00	FIN	MB	\$1.75
485	1948 S	CENT	LAMINATION OBVERSE 3:30 ACROSS NECK	FIN	MB	\$1.00
486	1952 S	CENT	LAMINATION REVERSE 2 BIG AREAS	FIN	MB	\$1.25
487	1954 S	CENT	LAMINATION OBVERSE 7:00 TO ALMOST 1:00	VF	MB	\$1.00
488	1966	CENT	LAMINATION OBVERSE 12:00 TO 4:30	FIN	MB	\$1.00
489	1999	CENT	DOUBLE STRUCK, 2ND 80% OFF CENTER & ROTATED 180o 2 FULL DATES	BU	MB	\$40.00
490	1995	CENT	BIE DIE BREAK "LIBERTY"	BU	MB	\$1.00
491	1991	CENT	CLASHED DIES BOTH SIDES HEAVY	BU	MB	\$5.00
492	1952 D	CENT	WRPM #16 RPM #15	FN+	MB	\$11.00
493	1955 D	CENT	DOUBLED DIE OBVERSE I-O-IV+VIII FS-01-1955D- 101	BU	MB	\$60.00
494	1956 D	CENT	RPM #8 FS#1c-022	VF	MB	\$25.00
495	1960 D	CENT	RPM #100 STAGE D DDO-I-O-III	BU	MB	\$100.00
496	1999 D	CENT	BROADSTRIKE	BU	MB	\$1.00
497	1925 S	CENT	RPM #1 FS-01-1925S-501	FIN	MB	\$8.00
498	1934 D	CENT	RPM #1	VG	MB	\$2.25
499	1934 D	CENT	RPM #2 STAGE A	FIN	MB	\$2.25
500	1938 D	CENT	RPM #3	VF	MB	\$3.75
501	1938 D	CENT	RPM #1 FS-01-1938D-501	VF	MB	\$4.00
502	1938 D	CENT	RPM #2	VG	MB	\$2.25
503	1938 S	CENT	RPM #2 FS-01-1938S-502	FIN	MB	\$2.00
504	1939 D	CENT	RPM #1	VF+	MB	\$2.00
505	1939 S	CENT	RPM #2	FIN	MB	\$2.00

506	1944	D	CENT	RPM #2		FIN	MB	\$2.75
507	1944	S	CENT	RPM #3		FIN	MB	\$1.75
508	1944	S	CENT	RPM #3		FIN	MB	\$1.75
509	1945	D	CENT	RPM #1		VG	MB	\$1.50
510	1945	D	CENT	RPM #6		VF	MB	\$2.00
511	1946	D	CENT	RPM #1		VF	MB	\$2.00
512	1946	D	CENT	RPM #4		VF+	MB	\$2.00
513	1946	D	CENT	RPM #17		EF	MB	\$2.50
514	1948	D	CENT	RPM #5		VF	MB	\$2.00
515	1948	S	CENT	RPM #1		VG	MB	\$1.50
516	1949	D	CENT	RPM #1 TRIPLE D/D/D FS-01-1949D-501		FIN	MB	\$2.75
517	1949	D	CENT	RPM #8		EF	MB	\$2.50
518	1949	D	CENT	RPM #10		EF	MB	\$2.50
519	1949	S	CENT	RPM #3		EF	MB	\$2.50
520	1950	D	CENT	RPM #1		VF	MB	\$2.00
521	1950	S	CENT	RPM #3		VF	MB	\$2.00
522	1951	D	CENT	RPM #2		FIN	MB	\$1.75
523	1951	D	CENT	RPM #8		VF	MB	\$2.00
524	1951	D	CENT	RPM #14		EF	MB	\$2.50
525	1951	D	CENT	RPM #16		VF+	MB	\$2.00
526	1951	S	CENT	RPM #8		FN+	MB	\$1.75
527	1952	D	CENT	RPM #3		EF	MB	\$2.50
528	1952	D	CENT	RPM #6		EF	MB	\$2.50
529	1952	D	CENT	RPM #8 STAGE B/C		VF	MB	\$2.00
530	1952	D	CENT	RPM #12		EF	MB	\$2.50
531	1952	S	CENT	RPM #5		FIN	MB	\$1.75
532	1952	S	CENT	RPM #10		VF	MB	\$2.00
533	1952	S	CENT	RPM #17		VG	MB	\$1.50
534	1952	S	CENT	RPM #22		FIN	MB	\$1.75
535	1953	D	CENT	RPM #1		FIN	MB	\$2.75
536	1953	D	CENT	RPM #1		VF+	MB	\$3.75
537	1953	D	CENT	RPM #2		FIN	MB	\$2.00
538	1953	D	CENT	RPM #6		VF	MB	\$2.00
539	1953	S	CENT	RPM #2		VF	MB	\$2.00
540	1953	S	CENT	RPM #3		VF	MB	\$2.00
541	1953	S	CENT	RPM #4		FIN	MB	\$1.75
542	1953	S	CENT	RPM #5 STAGE E		VF	MB	\$2.00
543	1953	S	CENT	RPM #6 STAGE C		VG	MB	\$1.50
544	1953	S	CENT	RPM #13		FIN	MB	\$1.75
545	1953	S	CENT	RPM #19		EF	MB	\$2.50
546	1954	D	CENT	RPM #1 FS-01-1954D-501		FIN	MB	\$2.50
547	1954	D	CENT	RPM #1 FS-01-1954D-501		EF	MB	\$4.00
548	1954	S	CENT	RPM #2		EF	MB	\$2.50
549	1954	S	CENT	RPM #4 STAGE J		VF	MB	\$2.25
550	1955	D	CENT	RPM #2		FN+	MB	\$1.75
551	1955	D	CENT	RPM #4		FIN	MB	\$1.75
552	1955	D	CENT	RPM #11		VF	MB	\$2.00
553	1955	S	CENT	RPM #2		EF	MB	\$2.50
554	1956	D	CENT	RPM #1		VF	MB	\$2.75
555	1956	D	CENT	RPM #1 FS-01-1956D-502		EF	MB	\$4.00
556	1956	D	CENT	RPM #4 STAGE A		VF	MB	\$2.00
557	1956	D	CENT	RPM #6		VF	MB	\$2.00
558	1956	D	CENT	RPM #8 FS-01-1956D-501		VF	MB	\$25.00
559	1956	D	CENT	RPM #18		VG/F	MB	\$11.00
560	1957	D	CENT	RPM #5 DDO-2-0-III+V		VF	MB	\$2.25
561	1957	D	CENT	RPM #13		EF	MB	\$2.00
562	1957	D	CENT	RPM #15		EF	MB	\$2.00

563	1957 D	CENT	RPM #17 STAGE C	VF	MB	\$1.75
564	1958 D	CENT	RPM #1	EF	MB	\$2.50
565	1958 D	CENT	RPM #7	AU	MB	\$2.25
566	1958 D	CENT	RPM #15	EF	MB	\$2.00
567	1958 D	CENT	RPM #17	VF+	MB	\$1.75
568	1959 D	CENT	RPM #1 FS-01-1959D-501	EF	MB	\$3.75
569	1959 D	CENT	RPM #3	VF	MB	\$1.75
570	1959 D	CENT	RPM #5 STGAE A	AU	MB	\$4.50
571	1959 D	CENT	RPM #6	EF	MB	\$2.00
572	1959 D	CENT	RPM #17	VF	MB	\$1.75
573	1960 D	CENT	RPM #5	VF	MB	\$1.75
574	1870	CENT	BELGIUM, LAMINATED OFF EDGE 2:00 TO 5:00 REVERSE	FIN	MB	\$5.00
* 575	1978	NICK	CANADA, STRUCK ON DIME PLANCHET GEMMY	BU	MB	\$195.00
576	1979	CENT	CANADA, 8% OFF CENTER 10:00 PEPPER LIKE SPOTS	UNC	MB	\$4.00
577	N.D.	OTHER	HONAN CHINA 10 CASH, Y-392, 15% OFF CENTER MIRROR BROCKAGE NEATO!!	EF	MB	\$80.00
578	1924	OTHER	GERMANY 5 PFENNIG, 50% OFF CENTER 12:30 + NEAT DIE CRACK REVERSE TOUGH COUNTRY	UNC	MB	\$55.00
* 579	1906	OTHER	GERMANY 2 PFENNIG, 40% OFF CENTER 6:00	UNC	MB	\$65.00
580	1949	OTHER	GERMANY 10 PFENNIG, WITH NEAT LARGE DIE DENTS OBVERSE & REVERSE	EF	MB	\$5.00
581	N.D.	OTHER	BRITISH INDIA CENT, 1875-1901 TYPE, 25% OFF CENTER MIRROR BROCKAGE 1ST STRIKE	VF	MB	\$250.00
582	1921 R	OTHER	ITALY 20c, LAMINATION OBVERSE TO CENTER OF COIN	VF	MB	\$1.50
583	1918	OTHER	LUMENBOURGH 5c, 15% OFF CENTER 9:30	EF	MB	\$25.00
584	1902	OTHER	MALDIVES 4 LARIAT, KM-40.1, DOUBLE STRUCK ON CENTER + SMALL RIM CLIP	EF	MB	\$12.50
585	(1974)	OTHER	MEXICO 5 PESO, TYPE 2 PLANCHET WITH REGULAR COIN	UNC	MB	\$32.00
586	N.D.	OTHER	MEXICO 20c, 50% OFF CENTER 4:30 UNIFACE REVERSE	BU	MB	\$18.00
587	N.D.	OTHER	ALMOST QUARTER SIZE TYPE 2 BRASS PLANCHET	AU	MB	\$0.50
588	1960	OTHER	PERU 5 CENTAVOS, DIE CRACK 5:30 ACROSS BUST	AU	MB	\$0.50
* 589	1964	OTHER	VENEZULA 5c, STRAIGHT EDGE CLIP 10:00	EF	MB	\$3.00
590	N.D.	OTHER	"GOOD FOR 10c IN TRADE" ALUMINUM TOKEN WITH CURVED CLIP 7:30 MOUNT THREE MILE BAY, NY	UNC	MB	\$4.00
591	1993	OTHER	MISSISSIPPI BELLE II, STRONG DOUBLED DIE OBVERSE + A REGULAR TOKEN NICKEL SIZE	CIRC	MB	\$4.50
592	1935	OTHER	NEW MEXICO, SALES TAX TOKEN STRUCK WITH SPLIT DIE REVERSE	BU	MB	\$3.00
593	1796	DOLL	"COPY" DOUBLE STRUCK, 2ND 5% OFF CENTER 6:00 SAME SILVER AS REGULAR DOLLAR	BU	MB	\$29.00
594	1796	DIME	"COPY" DOUBLE STRUCK ON CENTER OR BROADSTRUCK WITH REEDED EDGE SILVER	BU	MB	\$9.50
595	1794	H10c	"COPY" 20% OFF CENTER 1:00 + RAGGED EDGE CLIP 6:00	BU	MB	\$9.50
596	1977	TOKEN	ROLL OF 14 DOLLAR SIZE MEDALS OF NECA FIRS TS AT ANA ATLANTA,GA NEAT PIECE OF HISTORY	BU	MB	\$3.95

PRICES REALIZED SALE 36 --- CLOSED 11/30/2009

1	\$995.00	137	\$32.05	264	\$10.00	373	\$27.00	486	\$3.85	R	617	\$10.01	R
9	\$285.00	139	\$12.00	265	\$25.00	376	\$3.63	R 487	\$7.68		619	\$25.00	
11	\$150.00	140	\$12.00	266	\$8.00	378	\$0.50	488	\$9.00		622	\$35.00	
12	\$850.00	141	\$12.00	267	\$11.00	R 381	\$29.00	489	\$4.95	R	623	\$2.75	R
16	\$84.70	R 142	\$12.00	271	\$3.00	382	\$25.00	490	\$2.20	R	624	\$2.00	
21	\$199.00	143	\$65.00	275	\$2.50	384	\$15.00	491	\$3.30	R	625	\$4.10	T
22	\$95.00	147	\$18.00	279	\$3.00	387	\$2.50	492	\$3.00		633	\$25.00	
25	\$450.00	149	\$18.00	280	\$3.50	394	\$7.82	R 493	\$5.50	R	635	\$8.50	
28	\$88.00	R 150	\$18.89	281	\$4.50	395	\$2.00	494	\$3.30	R	638	\$5.00	
31	\$37.00	151	\$22.00	283	\$4.06	R 397	\$5.00	495	\$3.85	R	641	\$4.00	
44	\$295.00	152	\$22.89	290	\$10.00	398	\$6.00	496	\$3.00		643	\$1.50	
47	\$45.00	154	\$99.00	293	\$20.00	399	\$2.42	R 497	\$5.81	R	653	\$9.50	
49	\$220.00	R 158	\$12.00	297	\$8.00	400	\$2.00	498	\$5.81	R	654	\$19.50	
51	\$44.00	R 162	\$18.50	298	\$7.00	410	\$35.00	499	\$5.00		656	\$31.90	R
62	\$99.00	174	\$137.50	R 299	\$2.00	419	\$45.00	500	\$2.00		657	\$35.00	
64	\$19.85	R 180	\$2.50	300	\$35.00	T 438	\$2.50	501	\$4.40	R	658	\$44.00	R
66	\$27.00	181	\$96.80	R 301	\$4.84	R 441	\$2.50	502	\$4.95	R	659	\$29.00	
67	\$10.00	184	\$4.00	302	\$8.80	R 442	\$1.50	503	\$4.40	R	660	\$29.00	
71	\$37.50	191	\$45.00	308	\$2.50	446	\$1.50	504	\$4.00		662	\$198.00	R
76	\$300.00	T 194	\$2.50	309	\$49.50	R 448	\$8.00	505	\$325.00		6641,150.00		
77	\$260.00	199	\$2.50	310	\$43.12	R 450	\$6.60	R 508	\$39.00				
78	\$50.00	207	\$3.50	312	\$99.00	451	\$7.00	509	\$24.00				
81	\$260.00	210	\$7.50	314	\$2.50	454	\$6.00	510	\$32.00				
82	\$399.00	211	\$6.50	321	\$16.00	457	\$8.80	R 516	\$14.00				
83	\$50.00	212	\$45.00	323	\$19.00	458	\$6.00	519	\$18.00				
84	\$32.00	216	\$27.50	R 325	\$19.00	459	\$10.00	520	\$10.00				
86	\$15.00	220	\$24.00	327	\$19.00	463	\$6.00	521	\$9.00				
87	\$21.00	223	\$24.00	328	\$13.08	R 464	\$8.00	522	\$17.00				
88	\$195.00	224	\$9.00	330	\$19.00	465	\$27.50	R 534	\$4.40				
89	\$240.00	225	\$4.00	334	\$16.00	467	\$7.00	535	\$3.59				
90	\$74.80	R 230	\$3.50	337	\$35.00	468	\$3.00	536	\$4.40				
92	\$290.00	239	\$4.00	338	\$12.00	472	\$6.60	R 542	\$70.00				
93	\$33.00	241	\$4.72	R 340	\$264.00	R 473	\$35.00	543	\$6.00				
95	\$15.00	245	\$16.50	R 350	\$20.00	474	\$4.40	R 544	\$6.71	R			
104	\$3.50	246	\$15.00	352	\$0.82	R 475	\$1.00	545	\$5.00				
106	\$3.50	247	\$4.84	R 361	\$135.00	476	\$5.50	R 548	\$4.00				
107	\$25.00	251	\$125.00	362	\$88.00	477	\$4.00	549	\$3.00				
108	\$42.00	253	\$7.00	363	\$2.50	478	\$4.40	R 553	\$2.00				
112	\$39.00	254	\$5.00	364	\$3.00	479	\$8.80	R 555	\$1.50				
113	\$34.10	R 257	\$2.00	368	\$93.50	R 481	\$8.00	557	\$2.75				
120	\$15.89	258	\$4.00	369	\$90.00	482	\$140.00	T 576	\$2.75	R			
124	\$4.00	259	\$20.00	370	\$17.71	R 484	\$8.80	R 577	\$2.25				
131	\$66.00	263	\$12.50	371	\$22.00	485	\$6.60	R 580	\$3.50				
								598	\$10.00				

THATS IT FOR THIS SALE. THANKS TO ALL THAT JOINED IN ON THIS ONE.  
R = PRICE REDUCED FROM BID. T = TIE BIDS RECEIVED FIRST POST MARK WINS.  
UNSOLD LOTS MAY BE PURCHASED FOR MINIMUM BID OR EST PRICE WITHIN NEXT 2 WEI  
THANKS AGAIN TO ALL OF YOU. - LEN ROOSMALEN



O/C 5c on 10c PCGS MS-62



O/C 1c on 10c PCGS MS-62



O/C 50c on 25c PCGS MS-63

Lot #1 Once-in-a-lifetime set  
of O/C off metals

**JIM'S CBS**



O/C 25c on 1c NGC MS-64



1971-D O/C 5c on 1c PCGS-58