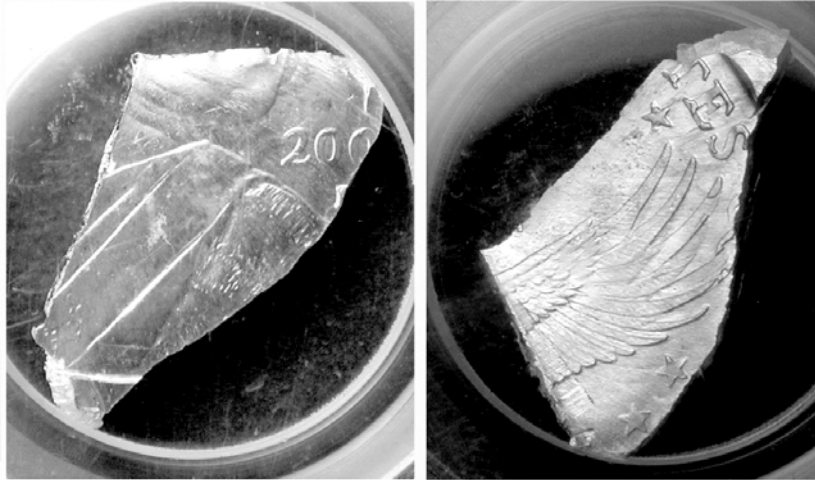


# JIM'S C&S

Hilldale Shopping Center  
702 N. Midvale Blvd. B-2  
Madison, WI 53705  
(608) 233-2118

[www.jimscoins.net](http://www.jimscoins.net)



2. 2000 SAC\$ Double struck on aluminum feeder finger!

## NO. 30

\*\* IF YOU WISH TO CONTINUE RECEIVING CATALOGS,  
PLEASE SEND \$8.00 FOR YEAR SUBSCRIPTION, IF YOU  
HAVE NOT ALREADY DONE SO. THANK YOU!

\*FIRST CLASS\*

## MAIL BID SALE #30 CLOSES DECEMBER 1, 2008

- 1) SEND ALL BIDS TO: JIM'S COINS, 702 N. MIDVALE BLVD. B-2, MADISON, WI 53705, OR FAX #608-233-0175, OR PHONE 608-233-2118, OR EMAIL: jimscoins @sbcglobal.net
- 2) THE HIGHEST BIDDER ACKNOWLEDGED BY THE AUCTIONEER SHALL BE THE BUYER. THE AUCTIONEER RESERVES THE RIGHT TO REJECT ANY BID OR WITHDRAW ANY LOT FROM THE SALE. BIDDERS ARE RESPONSIBLE FOR THEIR OWN ERRORS, SO DOUBLE CHECK YOUR BIDS. THE FIRST POSTMARK WINS IN CASE OF A TIE BID.
- 3) ALL SALES ARE FOR CASH AND ARE PAYABLE IMMEDIATELY UPON RECEIPT OF THE INVOICE.
- 4) AUCTIONS ARE OPEN TO ALL AND NO DEPOSIT IS REQUIRED OR DESIRED.
- 5) NO UNLIMITED BIDS ARE ACCEPTED. WINNING BIDDERS WILL BE AWARDED LOT AT A 10% ADVANCE OVER THE SECOND HIGHEST BID. IF NO OTHER BIDS ARE RECEIVED FOR A LOT, THE BIDDER WILL BE AWARDED THE LOT AT THE MINIMUM BID, OR ESTIMATE IF NO MINIMUM IS GIVEN.
- 6) ALL ITEMS ARE GUARANTEED GENUINE. BIDDERS MAY RETURN ANY ITEM NOT AS DESCRIBED.
- 7) A \$1 HANDLING CHARGE WILL BE ADDED TO ALL WINNING INVOICES. BID EARLY AND BID OFTEN. THANKS! - LEN & JIM

* 1	1976 D	DOLL	28% CURVED CLIP 8:00 + SMALL STRAIGHT CLIP 5:30 NEAT BICENTENNIAL PCGS	MS62	MB	\$950.00
* 2	2000 P	DOLL	SACAGAWEA, DOUBLE STRUCK ON ALUMINUM SCRAP SUPER OFF METAL, SELDOM SEEN UNDER \$10,000. PCGS	MS65	MB	\$2,800.00
3	1979 P	DOLL	S.B.A, STRUCK ON CLAD QUARTER PLAN PCGS	MS63	MB	\$2,800.00
4	N.D.	DOLL	S.B.A, 90% OFF CENTER 6:00 WITH UNIFACE REV SUPER CHEAP DOLLAR ERROR PCGS	MS64	MB	\$299.00
* 5	1999 P	DOLL	S.B.A, LARGE DBL STRK, 2ND 65% O/C 3:00 ANACS	MS66	MB	\$1,895.00
6	2007	DOLL	G. WASH, MISSING EDGE LETTERING PCGS	MS64	MB	\$79.00
7	2007	DOLL	G. WASHINGTON, MISSING EDGE LETTERING NGC	MS65	MB	\$99.00
8	2007 P	DOLL	J. ADAMS, ROTATED REV DIE 45 DEGREES CLOCKWISE NGC	MS64	MB	\$150.00
* 9	1998	ASE	SLAB SAYS HORIZONTAL MISALIGNMENT, VERY HIGH RIM, LOOKS LIKE OFF CENTER CAP BARELY FITS IN SLAB NGC	MS68	MB	\$2,200.00
10	1942	HALF	DUBLD DIE OBV, FS #8.5 STRONGLY DOUBLED BREST, NOT ON SLAB	MS64	MB	\$95.00
11	1955	HALF	"BUGS BUNNY" VARIETY RARE THIS HIGH GRADE WHITE COIN NGC	MS66	MB	\$250.00
12	N.D.	HALF	KENNEDY STRK ON SILVER QUARTER PLAN PCGS	MS64	MB	\$890.00
* 13	N.D. D	HALF	KENNEDY STRUCK ON NICKEL PLANCHET ANACS	MS62	MB	\$1,950.00
* 14	1989 P	HALF	DBL STRK, 2ND 90% O/C 11:00 UNI REV ANACS	MS62	MB	\$435.00
15	1964	HALF	STRUCK ON ROLLED THIN PLANCHET 10.4 GRAMS SHOULD BE 12.5 GRAMS PCGS	MS62	MB	\$299.00
16	1971 D	HALF	3% CURVED CLIP ON RIM AT 4:00 & 9:00 PCGS	AU58	MB	\$29.50
* 17	N.D.	HALF	KENNEDY, STRUCK 75% O/C 2:00 LOOKS LIKE TRIAL STRIKE ON PROOF PLANCHET NEED SOME RESEARCH PCGS	MS62	MB	\$895.00
* 18	N.D.	HALF	KENNEDY, STRUCK 55% OFF CENTER 3:30 PCGS	MS62	MB	\$550.00
19	N.D.	QUAR	WASHINGTON 90% SILVER PLANCHET NGC	MS	MB	\$180.00
* 20	N.D.	QUAR	WASH. QUARTER STRUCK ON SILVER DIME PLANCHET WITH UNIFACE OBV PCGS	MS63	MB	\$690.00
* 21	1970 D	QUAR	STRUCK 25% OFF CENTER WITH 60% INDENT	MS64	MB	\$2,100.00

11:00 OBV WHAT A COMBO ERROR CUTE! PCGS							
22	1962 D	QUAR	STRUCK ON CENT PLANCHET SCARCE EARLY DATE PCGS BRN	MS64	MB	\$1,350.00	
*	23	1969	QUAR	STRUCK ON CENT PLANCHET NICE FULL DATE IRRADESCENT COLOR NGC BN	MS65	MB	\$1,395.00
*	24	1972 D	QUAR	STRUCK ON CENT PLAN 3.08 GRAMS NGC RB	MS65	MB	\$1,450.00
	25	N.D.	QUAR	STRUCK ON CU CENT PLANCHET PCGS RB	MS64	MB	\$860.00
	26	1956	QUAR	STRUCK ON NICKEL PLANCHET FROM HARRISON PHILLIPS COLLECTION PCGS	AU58	MB	\$595.00
*	27	1976 D	QUAR	STRUCK ON NICKEL PLANCHET FULL DATE & MM BICENTENNIAL NEW ANACS	AU58	MB	\$1,650.00
*	28	1961	QUAR	STRUCK ON SILVER DIME PLANCHET PCGS	AU58	MB	\$1,450.00
	29	1974	QUAR	STRUCK ON PLANCHET WITH NO COPPER CORE 91 GRAINS PCGS	XF45	MB	\$1,100.00
*	30	1967	QUAR	SPECIAL MINT SET COIN, WITH PART COLLAR ON LGE STR CLIPPED PLANCHET 8:30 TO 2:00 NGC	MS63	MB	\$1,100.00
	31	1999 P	QUAR	NEW JERSEY, DOUBLE STRUCK, 2ND 85% OFF CENTER 12:30 UNIF REV PCGS	MS61	MB	\$395.00
	32	2005 P	QUAR	OREGON, 22% DBL CLIPPED PLANCHET PCGS	MS63	MB	\$225.00
	33	1959	DIME	STRUCK ON COSTA RICA 10c PLANCHET 1.7 GRAMS NGC MAGNETIC STEEL PLANCHET!	AU58	MB	\$1,250.00
	34	1950 S	DIME	OMM S OVER D FS-014.5 OMM #1 ANACS	MS63	MB	\$165.00
	35	1964 D	DIME	DOUBLED DIE REV FS-018.5 DIE 1 ANACS	AU55	MB	\$145.00
	36	N.D.	NICK	LIBERTY NICKEL, STRUCK 95% O/C 6:00 DIE STRUCK BOTH SIDES SUPER NEAT EX BOLT COLL. PCGS	MS62	MB	\$830.00
*	37	1883 NC	NICK	DBL STRK IN COLLAR ROT BETW STRIKES NGC	GD04	MB	\$595.00
*	38	1913	NICK	VARIETY 1, WITH STRAIGHT CLIP 5:30 TO 7:00 + 20 DEGREE ROTATED REV ANACS	MS62	MB	\$295.00
	39	N.D.	NICK	BUFFALO, STRUCK 35% O/C 9:00 CIRCULATED BUT LOTS OF DETAILS AT A DECENT PRICE NGC	VG8	MB	\$595.00
*	40	N.D.	NICK	JEFFERSON STRUCK 70% OFF CENTER ON DIME PLANCHET WOWSER! PCGS	MS65	MB	\$1,495.00
*	41	1979	NICK	STRUCK ON 1979 STRUCK CENT FLIPOVER STRIKE GREAT DETAILS NGC BN	AU58	MB	\$980.00
	42	N.D.	NICK	JEFFERSON MULTI STRUCK WITH HUGE BROCKAGE OBV LARGER THAN 25c ANACS	MS64	MB	\$190.00
	43	1817	CENT	OBVERSE HALF OF SPLIT PLANCHET AFTER5 STRUCK 5.6 GRAMS NGC	(VG)	MB	\$350.00
*	44	1853	CENT	STRUCK 25% O/C 1:00 NEAT OLDIE!! PCGS	VF35	MB	\$595.00
	45	1835	CENT	STRUCK 12% O/C ON TYPE 1 PLANCHET PCGS	GD06	MB	\$450.00
	46	1886	CENT	COLLAR DIE BREAK 9:30 TO 2:00 MINT ERROR NGC BN	XF45	MB	\$295.00
*	47	1901	CENT	INDIAN STRUCK 25% OFF CENTER 1T 11:00 PCGS	VG08	MB	\$250.00
*	48	1999	CENT	THE ULTIMATE 3 COIN BONDED "CAP" OVER HALF INCH WAY DEEP TOO DEEP FOR A SLAB WOW!	MS	MB	\$3,900.00
*	49	1973 D	CENT	MAJOR CUD OBV DIE BREAK ALMOST HALF OF COIN LC-73D-13B PCGS BN	MS63	MB	\$515.00
*	50	1965	CENT	STRUCK ON SCRAP DIME PLANCHET 1.4 GRAMS LOOKS LIKE STR CLIP 8:00 TO 1:00 NGC	MS64	MB	\$1,850.00
	51	1964 D	CENT	STRUCK ON SILVER DIME PLAN 2.52 GRS, HAS SOME OBV SCRATCHES NCS SLAB UNC DETAILS	UNC	MB	\$499.00
	52	1945	CENT	CENTERED BROADSTRIKE NGC RED	MS63	MB	\$55.00
	53	1952 D	CENT	OVER MINT MARK D OVER S FS-021.6 NGC RED	MS64	MB	\$65.00
	54	1956 D	CENT	REPUNCHED MINT MARK D/D FS-022.1 NGC RED	MS66	MB	\$85.00
	55	1944	CENT	MULTIPLY STRUCK STRONG IN MOTTO ANACS RB	MS60	MB	\$295.00
	56	1913 S	CENT	STRUCK 5% OFF CENTER 3:00 RARE DATE PCGS	AU55	MB	\$385.00
	57	1914	CENT	STRUCK 10% OFF CENTER 1:00 PCGS BN	MS64	MB	\$495.00
	58	1915	CENT	STRUCK 20% OFF CENTER 10:30 PCGS BN	MS63	MB	\$495.00
	59	1915 D	CENT	STRUCK 10% OFF CENTER 1:00 NGC BN	MS62	MB	\$495.00

60	1917 D	CENT	STRUCK 15% O/C 5:00 LOTS OF RED NGC BN	MS63	MB	\$495.00
61	1919	CENT	STRUCK 50% OFF CENTER 11:00 PCGS	AU58	MB	\$295.00
62	1919 D	CENT	STRUCK 15% OFF CENTER 10:00 PCGS	AU55	MB	\$435.00
63	1919 S	CENT	STRUCK 45%OFF CENTER 9:30 PCGS	AU58	MB	\$474.00
64	1928 S	CENT	STRUCK 5% OFF CENTER 2:00 PCGS	AU55	MB	\$395.00
65	1940 S	CENT	STRUCK 50% OFF CENTER 7:30 NEW ANACS	MS60	MB	\$225.00
66	1944 D	CENT	STRUCK 5% O/C 10:00 UNC DETAILS CLND ANACS	AU55	MB	\$75.00
67	1947 S	CENT	STRUCK 50% OFF CENTER 10:00 PCGS BN	MS64	MB	\$295.00
68	1950 D	CENT	STRUCK 45% OFF CENTER 10:00 PCGS BN	MS62	MB	\$129.00
69	1951	CENT	STRUCK 50% OFF CENTER 9:30 PCGS RED	MS63	MB	\$139.00
70	1951 D	CENT	STRUCK 45% OFF CENTER 9:00 PCGS RB	MS64	MB	\$139.00
71	1953	CENT	STRUCK 55% OFF CENTER 10:30 PCGS RB	MS64	MB	\$139.00
72	1955 D	CENT	STRUCK 50% OFF CENTER 9:00 PCGS RB	MS63	MB	\$139.00
73	1957 D	CENT	STRUCK 50% OFF CENTER 8:30 PCGS RED	MS63	MB	\$129.00
74	1996	CENT	STRUCK 35% OFF CENTER 1:00 PCGS RED	MS63	MB	\$39.00
75	1998	CENT	STRUCK 20% OFF CENTER 6:30 PCGS RED	MS65	MB	\$39.00
76	1999	CENT	STRUCK 30% OFF CENTER 8:00 PCGS RED	MS64	MB	\$39.00
77	2000	CENT	STRUCK 25% OFF CENTER 1:00 PCGS RED	MS64	MB	\$39.00
78	2001	CENT	STRUCK 20% OFF CENTER 7:00 PCGS RED	MS65	MB	\$39.00
*	79 1945 D	DIME	U.S.PHILIPPINES 20c STRUCK ON 10c PLANCHET PCGS	MS63	MB	\$650.00
*	80 1972	OTHER	PHILIPPINE PISO STRUCK ON U.S. HALF DOLLAR PLANCHET 11.2 GRAMS NGC ***** SEE LOTS 695 FOR MORE SLAB ERRORS *****	MS64	MB	\$550.00
*	81 1999		\$100 F.R.N.(FEDERAL RESERVE NOTE) MISSING RIGHT SIDE SEAL	CH A	MB	\$345.00
*	82 1993		\$20 F.R.N, 2 CONSEQ. SHOWING SPOOKY GREEN FOG CHCU RISING REV PAIR INK SMEARS	MB	MB	\$350.00
	83 1981 A		\$20 F.R.N, DARK OFFSET REV ON OBV LEFT END 3/4" WIDE	CU	MB	\$75.00
*	84 1985		\$20 F.R.N, FOLD OVER RT LOWER CORNER LEAVING NEAT WHITE AREA	EF	MB	\$75.00
	85 1985		\$10 F.R.N, LIGHT FULL OFFSET REVERSE ON OBV	VF	MB	\$75.00
*	86 1988 A		\$5 F.R.N, MISALIGNED REV ERSE UPWARDS SO THAT VF NEXT NOTE SHOWS ACROSS BOTTOM+ SM INK SMEAR REV	VF	MB	\$95.00
	87 1986 B		\$5 F.R.N, MISALIGNED REV PRINTING SO DESIGN IS ON VERY EDGE RIGHT END	F/VF	MB	\$55.00
	88 1977		\$5 F.R.N, FULL MEDIUM OFFSET OBV ON REV	CU	MB	\$170.00
*	89 1950 A		\$5 F.R.N, NEAT HALF DARK OBV ON REV WITH DIAGINOL DESIGN ACROSS MIDDLE NOTE	VF	MB	\$110.00
*	90 1988 A		\$5 F.R.N, MISSING COMPLETE OBV PRINT HAS SEALS & SER # A WOWSERE WITH 2 REG NOTES # BEFORE & AFTER THIS 3 NOTES	CHCU	MB	\$1,500.00
	91 1969 D		\$1 F.R.N, MISCUT LINE OF NEXT NOTE SHOWS ACROSS TOP + OVER INKED U.S. OBV MULTI ERROR	VF	MB	\$18.00
*	92 1977 A		\$1 F.R.N, 3RD PRINTING SHIFTED OBV, DIST # ONTO 1 DESIGN LOW LEFT	VG	MB	\$55.00
	93 1963 A		\$1 F.R.N, 3RD PRINTING SHIFTED RIGHT ONTO BLACK DESIGN	CU	MB	\$30.00
	94 1999		\$1 F.R.N, 2 CONSEQ, STAR NOTES INSUFFICIENT INK ON SER NUMBERS	GEM	MB	\$29.00
*	95 1995		\$1 F.R.N, FULL DARK OFFSET REVERSE ON OBVERSE GREAT EXAMPLE	AU	MB	\$150.00
	96 1995		\$1 F.R.N, PARTIAL MEDIUM OFF SET OBV ON REV ACROSS TOP INCH	VF	MB	\$32.00
	97 1977		\$1 F.R.N, MINOR INF SMEAR UPPER LEFT CORNER	CHCU	MB	\$9.00
*	98 1969 D		\$1 F.R.N, MAJOR SHIFT RIGHT 3RD PRINTING WELL INTO DESIGN	FINE	MB	\$75.00

99	1995		\$1 F.R.N, 3 NOTES IN SAME SERIES 264,267,270 LAST \$s ALL WITH SMALL INK SMEAR LOWER LEFT CORNER	UNC	MB	\$39.00
*	100	1935 C	\$1 SILVER CERT, MAJOR MISALIGNED REV SO 1/4" NEXT NOTE ON LEFT END	VF	MB	\$110.00
*	101	1935 E	\$1 SILVER CERT, NICE WIDE & NARROW GUTTER FOLDS REV TOP TO BOTTOM LT INK MARK REV	VF	MB	\$45.00
*	102	1935 E	\$1 SILVER CERT, WHITE GUTTER FOLD OBV LEFT END TOP TO BOTTOM	VG	MB	\$33.00
*	103	1928 A	\$1 SILVER CERT, "FUNNY BACK VARIETY" SER NUMBERS SEALS SHIFTED WAY LOW	VF	MB	\$65.00
*	104	1935 D	\$1 SILVER CERT, PARTIAL OBSTRUCTION OF LEFT SEAL & SER NUMBER OBV	EF	MB	\$165.00
*	105	1917	\$1 LEGAL TENDER, NICE WHITE GUTTER FOLD OBV & REV LEFT END TOP TO BOTTOM IN PMG GRADED HOLDER	VF25	MB	\$595.00
	106	1917	\$2 LEGAL TENDER, PARTIAL TURNED "A" IN SER NUMBER, PARTIAL TELLER STAMP OBV	VG	MB	\$85.00
*	107	N.D.	OTHER INDIA 10 RUPEE NOTE, HAS SUPER LARGE BUTTERFLY CORNER WITH PRINTING FROM REV NEAT!! PIN HOLES	UNC	MB	\$75.00
	108	1882O/S	DOLL STRONG OVER MINT MARK	VG	MB	\$26.00
	109	1883 O	DOLL ROTATED REVERSE 40 DEGREES CCW	UNC	MB	\$95.00
	110	1900 O	DOLL O OVER CC MINT MARK	VG	MB	\$26.00
*	111	1921	DOLL MORGAN, VERY LG STRK THRU 8:30 TO 9:30 OBV	EF	MB	\$45.00
*	112	1921 S	DOLL 2% CURVED RIM CLIP 11:00	AU	MB	\$25.00
*	113	1923	DOLL 1/8" WIDE STRK THRU OBV 9:00 TO 12:30 NEAT ONE	AU	MB	\$95.00
	114	1923 D	DOLL MULTIPLE VERY HEAVY DIE CRACKS AROUND OBVERSE	EF	MB	\$21.00
	115	1976 D	DOLL RIM CLIP 1:00 ++ WEAK DISK CLIP AT 8:00	BU	MB	\$19.00
	116	1978	DOLL TILTED PARTIAL COLLAR EDGE DING 11:00, COUNTER SKID OBV	BU	MB	\$49.00
*	117	N.D.	DOLL IKE, STRUCK 85% OFF CENTER 2:00, SHOWS "IN GO TR" UNIF REV	BU	MB	\$650.00
*	118	1979	DOLL S.B.A, 23% CURVED CLIP 8:00 + RIM CLIP 11:00	BU	MB	\$165.00
*	119	2000 P	DOLL 15% CURVED CLIP 10:00 ON SAC \$	BU	MB	\$225.00
	120	2000 D	DOLL FULL LEVEL PARTIAL COLLAR ON SAC \$	BU	MB	\$65.00
	121	N.D.	DOLL PRESIDENTIAL TYPE 2 BLANK PLANCHET	BU	MB	\$99.00
	122	2007 P	DOLL ADAMS DOLLAR, WITH DOUBLE EDGE LETTERING AND OVERLAPPING	BU	MB	\$85.00
	123	1990	ASE AMERICAN SILVER EAGLE, STRUCK IN RETAINED BRASS WIRE 3:00 TO 4:30 REV	BU	MB	\$95.00
	124	1991	ASE STRUCK THRU RETAINED GLUE? OBVERSE 4:00	BU	MB	\$35.00
	125	2007	ASE STRUCK THRU RETAINED TAPE 4:00 OVER TRUST	BU	MB	\$35.00
	126	1865 S	HALF CUD REVERSE AT 4:00 LSHD-1865S-2R-RET	EF	MB	\$150.00
	127	1941	HALF FLAKING EDGE LAMINATION 12:30 OBVERSE	MS60	MB	\$32.00
*	128	1944 S	HALF DISK CLIP 7:30	AU	MB	\$34.00
	129	1917	HALF RIM CLIP 5:00 ++ STRONG WIDE FLANGED PARTIAL COLLAR SCRATCHES IN FIELD 3:00	EF	MB	\$299.00
	130	1957 D	HALF STRONG TILTED PARTIAL COLLAR TOUGH ON FRANKLIN	AU	MB	\$125.00
	131	1952 D	HALF RIM CLIP 4:00	VF	MB	\$12.00
*	132	1956	HALF 3% CURVED CLIP 9:00	BU	MB	\$42.00
*	133	1963	HALF 10% STRAIGHT CLIP 9:00 TO 11:00	EF	MB	\$69.00
	134	1952 D	HALF STRUCK THRU LARGE LAM FLAKE OBV ABOVE DATE & ON FACE INCLUDES A PIECE OF LAM	UNC	MB	\$50.00
*	135	N.D. D	HALF 10% OFF CENTER STRIKE ON SILVER CLAD LAYER OFF BEFORE STRUCK KENNEDY HAS A BEARD, "CRICKET COIN" BECAUSE COIN MAKES A SNAPPING CRICKET SOUND WHEN PRESSED.	BU	MB	\$525.00



9



13



1



17



9



14



17



23



24



21



27



28



36a



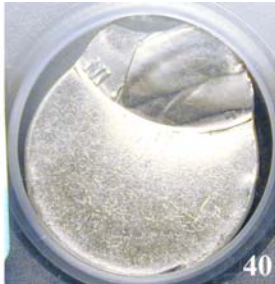
36b



30



38



40



37



41



47



44



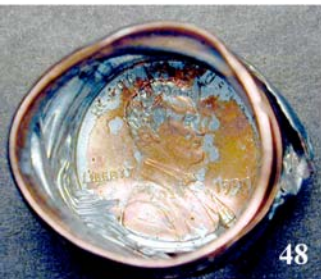
50



444



696



48



49



79



80



82a



82b



81



84



105





90



95



98



100



107



102



104



103



86



88



89



92



101



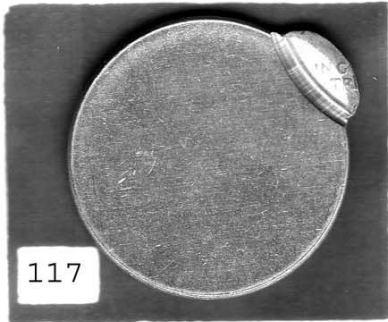
111



112



113



117



118



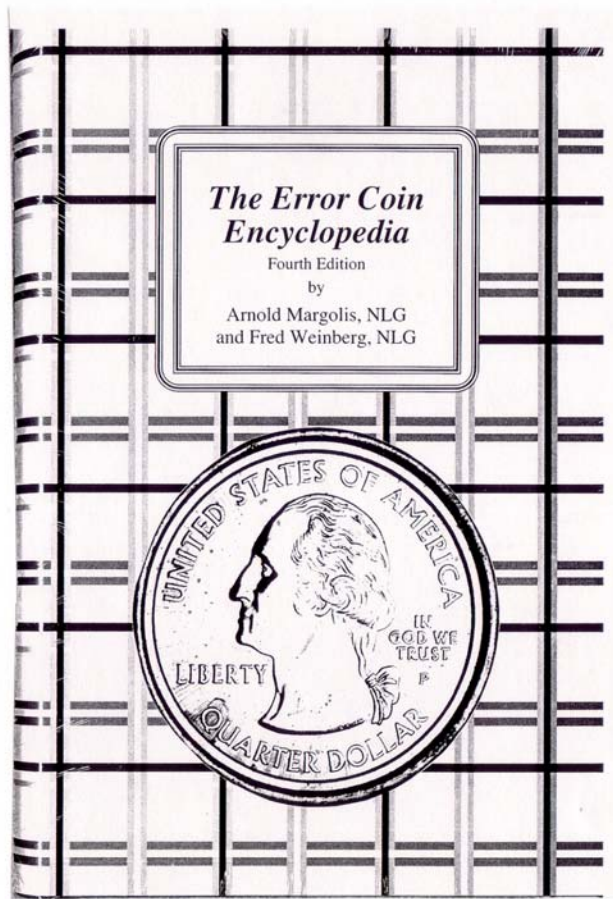
119



128



132



**CLASSIC ERROR REFERENCE ENCYCLOPEDIA**  
**\$37.95 PPD.**

SUBSCRIPTION FOR THE YEAR 2008  
DON'T MISS ANY OF THESE SALES!  
SEMI-MONTHLY ERROR CATALOGS PUBLISHED FOR THE PAST 22 YEARS!

THE SUBSCRIPTION PRICE IS \$8.00 FOR SIX CATALOGS ON A SEMI-MONTHLY BASIS. COST OF PRINTING AND MAILING THE LAST CATALOG WAS \$2.06 EACH. WE DON'T MIND SENDING CATALOGS TO COLLECTORS OF CATALOGS IF YOU SHARE IN THE COST OF THE CATALOGS.

WE WILL AUTOMATICALLY BILL \$8.00 SUBSCRIPTION DUES TO ALL WINNING BIDERS WHO HAVE NOT YET PAID UNLESS OTHERWISE PAID OR INFORMED.

WE HAVE A FULL SERVICE COIN & STAMP STORE THAT IS LOCATED IN HILDALE MALL IN MADISON, WI. PLEASE FEEL FREE TO STOP BY IF YOU ARE IN TOWN. WE ARE ALSO ENTHUSIASTIC BUYERS OF ALL ERRORS AS WELL AS NORMAL COINS, STAMPS AND COLLECTIBLE RED/BLUE BOOKS!

PLEASE VISIT OUR WEB SITE AT [www.Jimscoins.com](http://www.Jimscoins.com) MANY OF THE PHOTOS IN THE WEB SITE VERSION ARE \*FULL COLOR\*.

NEW PROGRAM: FREE CONECA MEMBERSHIP UPON REQUEST FOR NEW MEMBERS WITH WINNING BIDS TOTALLING \$50 OR MORE.

CONSIGNORS: GETTING TOUGHER TO FIND ERRORS TO FILL THE AUCTIONS. IF YOU HAVE SOME TO SELL OR CONSIGN, PLEASE LET US KNOW. TERMS ARE 15% COMMISSION, YOU SET THE MINIMUM BID AND NO CHARGE IF THE COIN DOES NOT SELL. ALSO BID GENEROUSLY SO WE CAN AFFORD TO BUY SOME MORE. HEH-HEH. -LEN & JIM

NOTES FOR J-30: THANKS ALL FOR A GREAT 5<sup>TH</sup> ANNIVERSARY AUCTION! GLAD SOME WERE ABLE TO GET THE BONUSES AS WELL. SOME MORE FRESH HIGH-POWERED MATERIAL IN THIS AUCTION WITH VERY LOW STARTING BIDS. SHOW YOUR SUPPORT FOR GREAT MATERIAL BY BIDDING STRONG AND BIDDING OFTEN! -LEN & JIM

NAME \_\_\_\_\_

ADDRESS \_\_\_\_\_

CITY \_\_\_\_\_ STATE \_\_\_\_\_ ZIP \_\_\_\_\_

PHONE (OPTIONAL) \_\_\_\_\_

YOUR ADDRESS LABEL HAS A YEAR ON IT SO YOU WILL KNOW WHEN YOUR SUBSCRIPTION EXPIRES.

THANKS AGAIN TO ALL OF YOU! -LEN & JIM



## **New Cud book for sale!** (and other error publications)

Book assembled by Frank Leone and contains detailed catalog of legendary Sam Thurman's cud collection quarters through dollars. Photos are superb. 47 full size pages. Book Retail for \$15, and you can get yours here for only \$10 ppd!

Not only that!

For just \$5 more: We also have a few copies of the original cud book "The Design Cud" by Paul Marvin and Arnold Margolis. At 205 pages it originally sold for \$10.95, and if you order the new book of Sam Thurman's cuds, you may purchase this original covering cents through dollars for only \$5! That's both books for a total of only \$15 ppd!

We also sell Fred Weignberg and Arnold Margolis's Error Coin Encyclopedia for \$37.95 ppd A great reference with in-depth explanation of all types of errors.

Finally for you book collectors, we have a reprint (photocopy) of Jeff Noe's IECPG, which contains records of tens of thousands of prices at which error coins actually sold for in the late 1980's to 1992. Also has weights and measures of all U.S. coins, and weights of wrong stock coins. About 150 Full size pages. Only \$24.

We accept check, M.O., credit card, and PAYPAL. If you pay via Paypal send payment to: [jimscoins@sbcglobal.net](mailto:jimscoins@sbcglobal.net). At your request we will also add any of these to your winning invoice total. Make the request with your bids. Thank you.







152



153



158



160



166



169



181



182



184



199



200



203



204



206



213



214



226



229



230



244



248



250



252



274



275



286



297



298



299



300



301



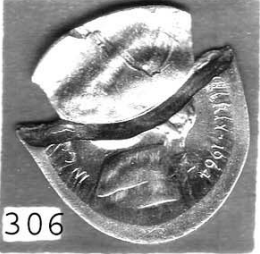
302



303



304



306



313



314



346



347



350



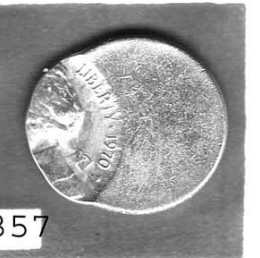
351



352



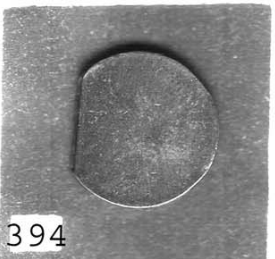
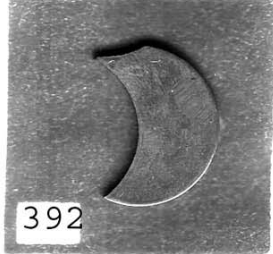
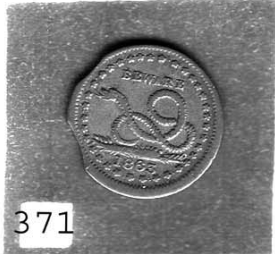
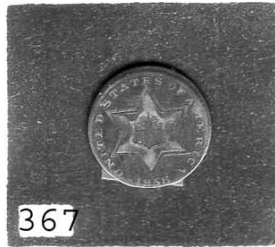
353

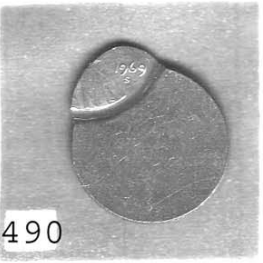
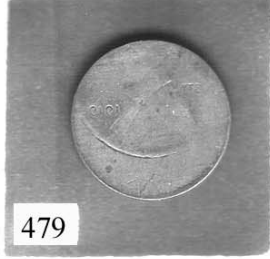
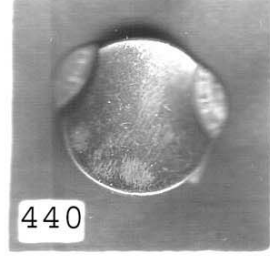


357



361





136	N.D.	HALF	TYPE 2 CLAD PLANCHET	UNC	MB	\$65.00
137	1982 P	HALF	STRUCK WITH BROKEN COLLAR CUDS IN REEDING ON EDGE AT 9:00 & 3:00	AU	MB	\$59.00
* 138	1972 P	HALF	DOUBLE STRUCK, 2ND 90% OFF CENTER 12:00 "97" ON 2ND STRIKE DSBS	UNC	MB	\$235.00
* 139	1964	HALF	MAJOR STRAIGHT CLIP 3:00 TO 5:30 CHOICE + STRONG BLAKESLEY EFFECT	BU	MB	\$249.00
* 140	1981 D	HALF	25% CURVED CLIP 8:00	BU	MB	\$125.00
141	1976	HALF	CURVED CLIP 3:00 TO 4:00	UNC	MB	\$35.00
142	1985 P	HALF	RIM CLIP 5:00	BU	MB	\$9.50
143	1964 D	HALF	2% CURVED CLIP 5:30	AU	MB	\$9.50
144	1982 P	HALF	NO "FG " INITIALS	BU	MB	\$12.50
145	2002 P	HALF	COLLAR CUD IN REEDING 6:30 HALF WIDTH	MS63	MB	\$12.50
* 146	1964	HALF	STRUCK THRU OBVERSE HEAVY TWINE/STRING 4:00 ACROSS FACE TO 8:00 WOWSER	UNC	MB	\$210.00
147	1966	HALF	SPEC MINT SET COIN, STRUCK THRU 5/8" REEDING REV 7:00	GEM	MB	\$95.00
148	1971 P	HALF	LARGE DEEP STRUCK THRU MID HEAD OBVERSE	BU	MB	\$14.00
149	1967	HALF	WENT THRU UPSET MILL AFTER STRUCK UNUSUAL	BU	MB	\$75.00
150	N.D.	QUAR	90% SILVER TYPE 1 BLANK	AU	MB	\$95.00
151	N.D.	QUAR	CLAD TYPE 2 PLANCHET	UNC	MB	\$2.50
* 152	1973 D	QUAR	STRUCK ON NICKEL PLANCHET	AU	MB	\$225.00
* 153	1965	QUAR	DEEP STRUCK THRU REVERSE 6:00	UNC	MB	\$3.50
154	1950 D	QUAR	D OVER D REPUNCHED MINT MARK	EF	MB	\$4.50
155	1939 S	QUAR	DUBL DIE OBV 001, FS-25-1939S-101	FIN	MB	\$10.00
156	1976	QUAR	OBVERSE CLAD LAYER OFF BEFORE STRUCK, BICENTENNIAL BROWN	AU	MB	\$175.00
157	1978 D	QUAR	REVERSE CLAD LAYER OFF BEFORE STRUCK RED/BRN	CHBU	MB	\$65.00
* 158	1992	QUAR	DIE TRIAL STRIKE VERY WEAK REEDING A SIGN OF DIE TRIAL	UNC	MB	\$65.00
159	1963 D	QUAR	2% CURVED CLIP 1:30	VF	MB	\$12.00
* 160	1965	QUAR	STRAIGHT CLIP 2:00 TO 4:00	BU	MB	\$15.00
161	1967	QUAR	RIM CLIP 4:00 + 5% CURVED CLIP 10:00	AU	MB	\$5.00
162	1970 D	QUAR	DISK CLIP 3:00 + 3% CURVED CLIP 5:00	AU	MB	\$4.50
163	1985 P	QUAR	HIGH WIRE RIM OBVERSE	BU	MB	\$2.50
164	N.D.	QUAR	90% OFF CENTER 6:00 DSBS	BU	MB	\$35.00
165	N.D.	QUAR	80% OFF CENTER 6:00 DSBS	BU	MB	\$35.00
* 166	1983 X	QUAR	75% OFF CENTER 1:00	BU	MB	\$55.00
167	N.D.	QUAR	55% O/C 5:00 + CLASHED DIES POSSIBLE MULTI STRIKE?	BU	MB	\$55.00
168	1985 X	QUAR	50% OFF CENTER 1:00	BU	MB	\$55.00
* 169	1985 X	QUAR	45% OFF CENTER 1:30	BU	MB	\$62.00
170	1985 P	QUAR	20% OFF CENTER 8:00 COUNTER SKID OBV	BU	MB	\$21.00
171	1982 P	QUAR	5% OFF CENTER 1:30 EDGE DING 7:30	AU	MB	\$7.50
172	1956	QUAR	TYPE 2 REVERSE, FS-25-1956-901	FIN	MB	\$6.50
173	1957	QUAR	TYPE 2 REVERSE, FS-25-1957-901	FIN	MB	\$4.00
174	1958	QUAR	TYPE 2 REVERSE, FS-1958-901	VF	MB	\$6.00
175	1959	QUAR	TYPE 2 REVERSE, FS-25-1959-901	VF	MB	\$5.50
176	1960	QUAR	TYPE 2 REVERSE, FS-25-1960-901	UNC	MB	\$12.50
177	1961	QUAR	TYPE 2 REVERSE, FS-25-1961-901	VF	MB	\$5.00
178	1962	QUAR	TYPE 2 REVERSE, FS-25-1962-901	VF	MB	\$8.00
179	1963	QUAR	TYPE 2 REVERSE, FS-25-1963-901	EF	MB	\$6.50
180	1964	QUAR	TYPE 2 REVERSE, FS-2-1964-901	AU	MB	\$7.50
* 181	2000 P	QUAR	MD, 14% O/C 2:00, EJECTION SCR OBV 6:00	BU	MB	\$45.00
* 182	(2)000	QUAR	STATE TYPE, 85% OFF CENTER 12:00 MOST OF DATE SHOWS + ES OF AM	BU	MB	\$149.00
183	1999 P	QUAR	NEW JERSEY, DOUBLE STRUCK, 2ND 80% OFF	BU	MB	\$375.00

CENTER 5:30 UNIF REV						
* 184	1999 X	QUAR	GEORGIA, DOUBLE STRUCK, 2ND 70% OFF CENETR 4:00 UNIFACE REVERSE	BU	MB	\$375.00
185	1999 P	QUAR	CONN, UNCENTERED BROADSTRIKE	BU	MB	\$25.00
186	2000 P	QUAR	S.C, UNCENTERED BRDSTK WITH PART COLLAR	BU	MB	\$22.00
187	2002 D	QUAR	INDIANA, UNCENTERED BROADSTRIKE JUST TOUCHED BY COLLAR RARE 2002	BU	MB	\$35.00
188	2003 P	QUAR	ILL, UNCENTERED BRDSTK WITH PART COLLAR	BU	MB	\$27.50
189	2007 P	QUAR	WASH, UNCENTERED BROADSTRIKE	UNC	MB	\$42.00
190	1999 D	QUAR	CONN, TILTED PARTIAL COLLAR + BROADSTRUCK	BU	MB	\$14.00
191	2001 D	QUAR	N.Y, TILTED PARTIAL COLLAR LOOKS OFF CENTER	BU	MB	\$15.00
192	2004 D	QUAR	TEXAS, TILTED PARTIAL COLLAR	CHBU	MB	\$16.00
193	2005 D	QUAR	CALIF, TILTED PARTIAL COLLAR + BROADSTRUCK	CHBU	MB	\$19.00
194	2000 P	QUAR	MASS, STRUCK THRU LATE STAGE CAPPED DIE REVERSE	BU	MB	\$295.00
195	1999 P	QUAR	DEL, MAJOR STRUCK THRU COMPLETELY AROUND HORSE & RIDER	BU	MB	\$3.50
196	2005 P	QUAR	MINN, WITH EXTRA EAR LOBE, DDO?	BU	MB	\$14.00
197	2005 P	QUAR	WV, NICE LARGE CUD 8:00 REV + NICE RIM CUD 6:00+ RIM CUD OBV 4:30	BU	MB	\$85.00
198	2006 P	QUAR	COLO, CUD REV 9:00	BU	MB	\$18.00
* 199	2005 D	QUAR	KANSAS, STRUCIK ON ELLIPTICAL CLIPPED PLANCHET 21mm WIDE SHOULD BE 24mM WOWSER	CHBU	MB	\$350.00
* 200	2007 D	QUAR	UTAH, STRUCK ON ELLIPTICALLY CLIPPED PLANCHET GEMMY COIN	BU	MB	\$350.00
201	2006 P	QUAR	NEVADA, 2 LARGE DIE BREAKS ON HORSE HOOF & BETWEEN LEGS LOOKS LIKE DOO-DOO	BU	MB	\$3.50
202	2008 D	QUAR	ARIZONA, STRUCK IN RETAINED BLACK MINT GRIME AROUND EDGE OBV	BU	MB	\$5.00
* 203	N.D.	DIME	BARBER, 25% OFF CENTER 6:30 GREY TONED A SCAECE ITEM HERE	EF	MB	\$525.00
* 204	1944	DIME	STRAIGHT CLIP 6:30 TO 8:00	EF	MB	\$16.00
205	1918 D	DIME	NEAT RAGGED EDGE DISK CLIP SOME ORIGINAL TONING	BU	MB	\$135.00
* 206	1944	DIME	15% CURVED CLIP 1:00	GEM	MB	\$145.00
207	1942	DIME	3% CURVED CLIP 10:30	VF	MB	\$10.00
208	1943	DIME	DISK CLIP 8:00	BU	MB	\$12.00
209	1941 S	DIME	ALMOST LEVEL PARTIAL COLLAR + BROADSTRUK , EJECT MARK REV	AU	MB	\$25.00
210	1944	DIME	5% CURVED CLIP 7:00	VF	MB	\$8.00
211	1940 D	DIME	RPM #2	BU	MB	\$25.00
212	2004 P	DIME	OBV CLAD LAYER OFF BEFORE STRUCK RED/BRN	UNC	MB	\$125.00
* 213	1964 D	DIME	CUD TOP OF HEAD OBV RDC-64D-1A	AU	MB	\$75.00
* 214	2007 P	DIME	A WOWSER!! STRUCK WITH SHATTERED DIE OBV NOT SEEN ON MODERN COINS THIS WAY	BU	MB	\$250.00
215	1953 S	DIME	REV DIE CLASH ON PROOFLIKE COIN	GEM	MB	\$4.50
216	1953 S	DIME	SPIKED CRACKED SKULL DIE CRACK OBV	GEM	MB	\$3.50
217	2000 D	DIME	SUPER STRONG CLASHED DIE REV ON OBV	BU	MB	\$25.00
218	1976 D	DIME	VERY HEAVY CLASHED DIES O & R	AU	MB	\$15.00
219	1983 P	DIME	STRUCK WITH SPLIT DIE OBV 12:00 TOO 7:00	UNC	MB	\$35.00
220	1964 D	DIME	STRUCK WITH FILLED DIE 6:00 REV	AU	MB	\$1.50
221	199(4)D	DIME	A PAIR OF VERY WEAK LOW PRESSUE STRIKES	BU	MB	\$110.00
222	1983 P	DIME	TILTED PARTIAL COLLAR	BU	MB	\$2.00
223	1985 P	DIME	TILTED PARTIAL COLLAR	BU	MB	\$1.50
224	1996 P	DIME	TILTED PARTIAL COLLAR + BROADSTRUCK	BU	MB	\$12.00



REEDING EXPANDED = MULTI STRIKE							
225	1969	DIME	BROADSTRUCK WITH PARTIAL COLLAR, 2 SPOTS OBV SCRAPE REV EDGE	AU	MB	\$4.00	
*	226	1996 P	DIME	5c SIZE BROADSTRIKE + REV REEDING COMING OFF MULTI STRIKE NO ROTATION	BU	MB	\$35.00
227	1985 P	DIME	HIGH THICK RIMS	UNC	MB	\$2.50	
228	1958	DIME	STRAIGHT CLIP 2:30 TO 5:00	AU	MB	\$4.00	
* 229	1968 D	DIME	20% STRAIGHT CLIP 8:00 TO 10:00	AU	MB	\$8.00	
* 230	1965	DIME	33% CURVED CLIP 12:30	BU	MB	\$28.00	
231	1966	DIME	25% CURVED CLIP 2:00	BU	MB	\$16.00	
232	1965	DIME	20% CURVED CLIP 10:30	AU	MB	\$12.00	
233	1959	DIME	1% CLIPS AT 10:00 & 12:30	BU	MB	\$5.00	
234	1960	DIME	3% C.CLIP 9:30 + RIM CLIP 12:30	VF	MB	\$6.50	
235	1960 D	DIME	5% CURVED CLIP 8:00	AU	MB	\$3.50	
236	19612	DIME	5% CURVED CLIP 4:00 + RIM CLIP 1:30	FIN	MB	\$6.50	
237	1961	DIME	2% CURVED CLIP 2:00 _ RIM CLIP 4:30	AU	MB	\$6.50	
238	1961 D	DIME	RIM CLIP 10:30	AU	MB	\$3.50	
239	1964 D	DIME	5% CURVED CLIP 1:30 + 5% CURVED CLIP 4:00	UNC	MB	\$9.00	
240	1964 D	DIME	4% CURVED CLIP 6:00 + RIM CLIP 3:00	EF	MB	\$6.50	
241	1964 D	DIME	3% CURVED CLIP 10:00 + RIM CLIP 7:30	UNC	MB	\$6.50	
242	1964 D	DIME	3% CURVED CLIP 7:30	UNC	MB	\$2.50	
243	1964 D	DIME	3% CURVED CLIP 11:00 + RIM CLIP 2:00	VF	MB	\$5.50	
* 244	1966	DIME	15% CURVED CLIP 10:30 + RIM CLIP 8:00	AU	MB	\$6.50	
245	1970 D	DIME	3 CLIPS, 10% 3:00 , RIM CLIP 7:00 , RIM CLIP 1:00	EF	MB	\$4.50	
246	1985 D	DIME	FLAT RIM OBV 11:00 TO 5:00	UNC	MB	\$1.50	
247	2006 P	DIME	OBV CLAD LAYER OFF BEFORE STRUCK RED	BU	MB	\$145.00	
* 248	1974 D	DIME	DOUBLE STRUCK, 2ND 85% O/C 11:30 UNIF REV	BU	MB	\$35.00	
249	198(5)P	DIME	DOUBLE STRUCK, 2ND 95% OFF CENTER 4:30	BU	MB	\$21.00	
* 250	1997 P	DIME	DUBL STRK, 1ST 70% O/C 12:30, 2ND 98% O/C 6:00 APPEARS TO BE FLIPOVER DUBL STRK	BU	MB	\$35.00	
251	1966	DIME	35% OFF CENTER 1:00	BU	MB	\$45.00	
* 252	1964	DIME	40% OFF CENTER 1:00	BU	MB	\$125.00	
253	N.D.	DIME	SILVER, 77% O/C 1:30 WITH CHAIN EDGE DSBS	UNC	MB	\$125.00	
254	1969 D	DIME	60% OFF CENTER 10:00 GREEN RESIDUE REV	BU	MB	\$28.00	
255	1971 D	DIME	40% OFF CENTER 1:00	BU	MB	\$35.00	
256	1972 D	DIME	45% OFF CENTER 1:00	BU	MB	\$35.00	
257	1973	DIME	75% OFF CENTER 11:30	BU	MB	\$35.00	
258	1973 D	DIME	45% OFF CENTER 11:00	UNC	MB	\$35.00	
259	1977	DIME	10% OFF CENTER 6:30	UNC	MB	\$9.00	
260	197X	DIME	17% OFF CENTER 6:30	BU	MB	\$9.00	
261	1981 P	DIME	50% OFF CENTER 12:30	BU	MB	\$28.00	
262	1983 P	DIME	40% OFF CENTER 12:00	BU	MB	\$18.00	
263	1986 D	DIME	70% OFF CENTER 12:00 DSBS	BU	MB	\$26.00	
264	1987 D	DIME	45% OFF CENTER 11:30	BU	MB	\$26.00	
265	1988 P	DIME	30% OFF CENTER 12:30	BU	MB	\$22.00	
266	1989 D	DIME	55% OFF CENTER 1:00	BU	MB	\$19.00	
267	1990 D	DIME	55% OFF CENTER 1:00	BU	MB	\$22.00	
268	1994 P	DIME	45% OFF CENTER 1:00	UNC	MB	\$19.00	
269	1995 D	DIME	55% OFF CENTER 1:00	BU	MB	\$22.00	
270	1997 P	DIME	30% OFF CENTER 1:00	BU	MB	\$18.00	
271	1998 P	DIME	35% OFF CENTER 11:30	GEM	MB	\$18.00	
272	N.D.	DIME	60% OFF CENTER 6:00	BU	MB	\$14.00	
273	N.D.	DIME	50% OFF CENTER 4:00	AU	MB	\$12.00	
* 274	1830	H10c	NICE UNCENTERED BROADSTRIKE ATTRACTIVE ORIGINAL COIN	VF	MB	\$540.00	
* 275	1869	NICK	20% OFF CENTER 8:00 PART OF DATE SHOWS NEAT OLDIE	VG	MB	\$799.00	
276	1883NC	NICK	DISK CLIP 10:00 + DIE CRACKS AT DATE, 7:30 TO	EF	MB	\$23.00	

## STAR TO BUST

277	1910	NICK	1/4" WIDE LAMINATION 6:00 TO 12:00 OBV NEAT!	GD	MB	\$3.50
278	1911	NICK	MULTI MAJOR LAMINATIONS OBV VARIOUS DEPTHS NEAT!	AG	MB	\$4.50
279	1915 D	NICK	ACIS DATE WITH REVERSE LAMINATIONS BETTER DATE	AG	MB	\$7.50
280	1918 S	NICK	REV LAMINATION 12:00 TO 3:30	GD	MB	\$10.00
281	1918	NICK	CLAMSHELL OPEN 1:30 TO 9:00	GD	MB	\$55.00
282	1921 S	NICK	LAMINATION CRACKS ACROSS HEAD OBV RARE DATE	GD	MB	\$60.00
283	1927 S	NICK	MINOR REV LAMINATION	GD	MB	\$1.50
284	1936 S	NICK	S OVER S MINT MARK RPM #1	EF+	MB	\$22.00
285	1914 S	NICK	RAGGED CLIP FILLED TO RIM	FIN	MB	\$45.00
*	286	1913 D	NICK TYPE 1, 5% CURVED CLIP 12:00	MS60	MB	\$75.00
	287	1935	NICK DDR (DOUBLED DIE REV) #1 RV FS-05-018	FIN	MB	\$150.00
	288	1938 D	NICK RPM #4 D OVER D	VF	MB	\$5.50
	289	N.D.	NICK TYPE 2 PLANCHET	UNC	MB	\$8.00
	290	1951	NICK DIE CRACK REV 12:00 "FLAG POLE LIKE"	BU	MB	\$2.50
	291	1964 D	NICK STRUCK THRU 3:00 ACROSS BUILDING	AU	MB	\$2.00
	292	1954 S	NICK DIE ADJUSTMENT STRIKE OR WEAK STRIKE	UNC	MB	\$10.00
	293	2005 P	NICK NOSE WART? AND FILLED PART 2ND ZERO	CHBU	MB	\$1.00
	294	1983 P	NICK TILTED PARTIAL COLLAR	BU	MB	\$2.00
	295	1984 P	NICK TILTED PARTIAL COLLAR	BU	MB	\$2.50
	296	2000 D	NICK HIGH THICK RIMS	BU	MB	\$4.50
*	297	1977 D	NICK CUD OBV TOP OF HEAD UNLISTED	EF	MB	\$15.00
*	298	1983 P	NICK CUD OBV 10:00 TO 11:00 JNC-83P-7	BU	MB	\$33.00
*	299	N.D.	NICK UNUSUAL FULL MIRROR REV ON OBV OVER GHOST JEFFERSON	EF	MB	\$210.00
*	300	1959	NICK STRK ON CENT PLANCHET NEAT EARLY DATE RB	UNC	MB	\$450.00
*	301	1981 D	NICK STRUCK ON CENT PLANCHET RED/BROWN	BU	MB	\$325.00
*	302	N.D.	NICK JEFFERSON STRUCK ON COSTA RICA CENTIMOS PLAN COMES WITH PCGS TAG MS62 MAGNETIC	MS62	MB	\$795.00
*	303	N.D.	NICK DUBL SADDLE STRIKE ON DIME PLANCHET, 70% O/C 4:30 + 99% O/C LT CLEANED BUT VERY RARE	UNC	MB	\$725.00
*	304	1978 D	NICK DUBL STRUCK, 2ND 70% O/C 7:00 LT SCR REV	UNC	MB	\$38.00
	305	1998 P	NICK DOUBLE STRUCK IN COLLAR APROX 75 DEGREE ROTATION BETWEEN STRIKES	BU	MB	\$115.00
*	306	1964	NICK MULTIPLE STRUCK PERFECT "MUSHROOM STRIKE" ON TYPE 1 PLANCHET WITH 50% BROCKAGE OBV + 2 LARGE PLANCHET CRACKS	BU	MB	\$260.00
	307	194X	NICK LAMINATED OFF OBV 4:00 TO 6:00 TO RIM	VF	MB	\$1.50
	308	1941	NICK LAMINATION STREAK OBV 10:00 TO 6:00	FIN	MB	\$0.50
	309	1944 D	NICK LAMINATION OUT 2:00 TO 4:00 OBV	AU	MB	\$1.50
	310	1954 S	NICK LAMINATION ACROSS BUILDING 10:00 TO 1:00	BU	MB	\$2.50
	311	1957 D	NICK LAMINATION REV ACROSS BUILDING	FIN	MB	\$1.50
	312	1958 D	NICK LAMINATION REV 4:00 TO 10:30	FIN	MB	\$0.50
*	313	1964 D	NICK NICE RAGGED EDGE CLIP INTO COIN AT 5:00	UNC	MB	\$5.00
*	314	1945 P	NICK STRAIGHT CLIP 8:00 TO 10:00	VF	MB	\$12.00
	315	1940	NICK RIM CLIP 2:30	VF	MB	\$2.00
	316	1942	NICK 5% CURVED CLIP 12:30	AU	MB	\$4.50
	317	1944 D	NICK 5% CURVED CLIP 12:30	EF	MB	\$4.00
	318	1945 P	NICK 3% CURVED CLIP 8:00 + LAMINATION OUT 10:30	FIN	MB	\$3.50
	319	1945 P	NICK 2% CURVED CLIP 11:30	AU	MB	\$2.50
	320	1946	NICK 2% CURVED CLIP 11:30	VF	MB	\$1.50
	321	1947	NICK 3% CURVED CLIP 7:00 SCRATCH REV	FIN	MB	\$2.50
	322	1948	NICK RIM CLIP 10:00	VF	MB	\$2.00
	323	1954 S	NICK 3% CURVED CLIP 10:30	VF	MB	\$3.50

324	1957 D	NICK	RIM CLIP 1:00 ++ 5% CURVED CLIP 10:00	EF	MB	\$4.50	
325	1958 D	NICK	2% CURVED CLIP 5:30 + 3% CURVED CLIP 11:30	VF	MB	\$6.00	
326	1960	NICK	RIM CLIPS AT 12:00 & 7:00	UNC	MB	\$3.50	
327	1960 D	NICK	RIM CLIP 11:00	EF	MB	\$1.50	
328	1961	NICK	RIM CLIP 4:00	EF	MB	\$1.50	
329	1962 D	NICK	2 RIM CLIPS AT 4:30 & 10:30	EF	MB	\$2.00	
330	1964 D	NICK	5% CURVED CLIP 1:00 + DISK CLIP 10:30	AU	MB	\$2.50	
331	1964 D	NICK	RIM CLIPS AT 5:00 & 11:00	FIN	MB	\$2.00	
332	1966	NICK	3% CURVED CLIPS AT 2:00 & 9:00	BU	MB	\$4.50	
333	1966	NICK	3% CURVED CLIP 10:00 + DISK CLIP 1:00	AU	MB	\$2.00	
334	1966	NICK	RIM CLIP 9:00	EF	MB	\$1.00	
335	1968 S	NICK	5% CURVED CLIP 4:00	BU	MB	\$1.50	
336	1968 S	NICK	5% CURVED CLIP 11:00	BU	MB	\$1.50	
337	1970 S	NICK	4% CURVED CLIP 4:30	AU	MB	\$3.00	
338	1974	NICK	2% CURVED CLIP 11:00	AU	MB	\$2.50	
339	1985	NICK	3% CURVED CLIP 10:30 + RIM CLIP 5:30	BU	MB	\$3.50	
340	1983 P	NICK	UNCENTERED BROADSTRIKE	UNC	MB	\$6.00	
341	1944 D	NICK	RPM #1 + DDO 002	VF	MB	\$4.00	
342	1945 D	NICK	RPM #10	FIN	MB	\$3.50	
343	1945 S	NICK	RPM #5	AU	MB	\$6.00	
344	1948 S	NICK	RPM #3	VF	MB	\$3.00	
345	1954 D	NICK	RPM #4	VG	MB	\$1.50	
*	346	1940 S	NICK	60% OFF CENTER 8:00 + MAJOR STRUCK THRU REV SUPER NEAT EARLY ERROR	UNC	MB	\$375.00
*	347	1949 S	NICK	10% OFF CENTER 8:00	CHAU	MB	\$285.00
	348	1945 P	NICK	10% OFF CENTER BROADSTRIKE LIKE STRIKE FULL STEPS LIGHT CLEANED	UNC	MB	\$129.00
	349	1949 D	NICK	10% OFF CENTER 3:00	CHAU	MB	\$285.00
*	350	1953 S	NICK	10% OFF CENTER 1:00 WITH FULL STEPS	CHBU	MB	\$450.00
*	351	1954 S	NICK	9% O/C 9:00 TOUGH DATE WITH COUPLE STEPS	BU	MB	\$335.00
*	352	1962 D	NICK	60% O/C 9:00 FULL DATE & MINT MARK LT SKID OBV BLANK AREA	BU	MB	\$175.00
*	353	1964	NICK	35% OFF CENTER 10:30	BU	MB	\$75.00
	354	(1964)D	NICK	50% OFF CENTER 7:00 DATE DOES NOT SHOW	UNC	MB	\$18.00
	355	1968 S	NICK	5% OFF CENTER 4:00 LITE REV SCRATCH	AU	MB	\$120.00
	356	1970	NICK	90% O/C WITH ONLY DATE SHOWING DSBS	BU	MB	\$45.00
*	357	1970 D	NICK	60% OFF CENTER 8:00	BU	MB	\$55.00
	358	XX72	NICK	55% OFF CENTER 11:00	BU	MB	\$35.00
	359	1973	NICK	80% OFF CENTER 9:00 DSBS	BU	MB	\$38.00
	360	1975	NICK	40% OFF CENTER 12:00	BU	MB	\$35.00
*	361	1976 D	NICK	55% OFF CENTER 11:00 DSBS	BU	MB	\$45.00
	362	19XX	NICK	60% OFF CENTER 8:00	BU	MB	\$10.00
	363	N.D.	NICK	35% OFF CENTER 1:00	BU	MB	\$12.00
	364	N.D.	NICK	45% OFF CENTER 1:30	BU	MB	\$12.00
	365	N.D. P	NICK	75% OFF CENTER 12:00	BU	MB	\$14.00
	366	N.D.	NICK	85% OFF CENTER 10:30 DSBS	BU	MB	\$8.50
*	367	1856	SIL3c	5% OFF CENTER 6:00 SELDOM SEEN TYPE!!!!	VF	MB	\$360.00
*	368	1865	NIK3c	35% OFF CENTER 12:00 SCARCE ONE!!	VF	MB	\$499.00
	369	1881	NIK3c	RIM CLIP 8:30	EF	MB	\$35.00
*	370	1866	NIK3c	APROX 65% CLAMSHELL OPEN TOWARDS 3:30	VG	MB	\$95.00
*	371	1863	CENT	CIVIL WAR TOKEN, 5% CURVED CLIP 10:30 + 3% CURVED CLIP 8:00, OBV; JACKSON, REV SNAKE TOUGH TOKEN	CHVF	MB	\$55.00
	372	1805	1/2C	DOUBLE STRUCK ON PROFILE 45 DEGREE ROTATION BETWEEN STRIKES LT OBV SCRATCHES	GD	MB	\$220.00

373 N.D.	CENT	TYPE 2 LARGE CENT PLANCHET	CIRC	MB	\$145.00
374 1814	CENT	LARGE CENT, 10% MISALIGNED DIE REV TOWARDS 1:00 + TAPERED RIM CLIP REV?	AG	MB	\$98.00
375 N.D.	CENT	LARGE CENT, 50% O/C 6:00 ON DAMAGED PLANCHET	VF	MB	\$365.00
376 1856	CENT	NICE SIZE CLIP 2:00	FIN	MB	\$35.00
377 N.D.	CENT	TYPE 2 PLANCHET, REALLY OLD INDIAN?/	CIRC	MB	\$5.00
378 1858LL	CENT	STRONG REV PRE CUD 5:00 DARK	VG	MB	\$16.00
379 1861	CENT	LARGE CENTERED BROADSTRIKE	GD+	MB	\$110.00
* 380 1863	CENT	UNCENTERED BROADSTRIKE WITH NICE PRE CUD DIE CRACK REV 3:00	GD	MB	\$165.00
* 381 1863	CENT	CLAMSHELL SPLIT APROX 50% NEAT!!	GD+	MB	\$125.00
* 382 1880	CENT	LAMINATION CRACK 1:00 TO EAR OBV	EF	MB	\$8.50
383 1903	CENT	LAMINATION 12:00 TO 2:30 OBV	GD	MB	\$3.50
384 1906	CENT	LARGE LAMINATION OBV 10:00 TO DATE 30% SPLIT OFF	GD	MB	\$16.00
385 1864 L	CENT	NICE RAGGED EDGE BREAK 10:30 THRU PLANCHET O & R	VF+	MB	\$125.00
386 1897	CENT	BROADSTRUCK	VG	MB	\$50.00
387 1906	CENT	CRACK THRU PLANCHET 11:30 TO CENTER OF COIN SHOWS BOTH SIDES	VG	MB	\$28.00
388 1879	CENT	STRUCK THRU 7:00 TO 8:30 OBV	GD	MB	\$8.50
389 1906	CENT	HEAVY STRUCK THRU LEFT WREATH REV	VF	MB	\$4.00
390 N.D.	CENT	TYPE 1 COPPER BLANK	UNC	MB	\$2.50
391 N.D.	CENT	TYPE 1 COPP BLANK WITH 30% + 2 RIM CLIPS	UNC	MB	\$42.00
* 392 N.D.	CENT	TYPE 1 COPPER BLANK + 50% C.CLIP + 3% C.CLIP	UNC	MB	\$42.00
393 N.D.	CENT	TYPE 2 COPPER PLANCHET	UNC	MB	\$0.50
* 394 N.D.	CENT	TYPE 2 COPPER BLANK WITH 10% STRAIGHT CLIP	UNC	MB	\$35.00
395 N.D.	CENT	TYPE 2 ZINC CORRODED	UNC	MB	\$0.50
396 N.D.	CENT	TYPE 1 COPP BLANK SPLIT IN HALF 23.4 GRAINS	UNC	MB	\$25.00
397 N.D.	CENT	TYPE 1 MINT MEDAL PLANCHETS 64 GRAINS	UNC	MB	\$1.00
398 N.D.	CENT	TYPE 1 COPPER BLANKS LOT OF 16 PIECES	UNC	MB	\$19.50
* 399 1958	CENT	STRUCK ON FOREIGN (DIME LIKE PROBABLY CUBA) PLANCHET WITH HOLETHRU TOP OF HEAD	VF	MB	\$125.00
* 400 1963	CENT	STRUCK ON SILVER DIME PLAN LIGHTLY CLND	AU	MB	\$598.00
* 401 1984 D	CENT	85% UNPLATED REV AT 6:30 + 15% OBV UNPLATED TOO	UNC	MB	\$25.00
402 1955	CENT	POOR MANS DOUBLED DIE	CHBU	MB	\$2.50
403 1995	CENT	BIE DIE BREAK "LIBERTY"	BU	MB	\$1.00
404 N.D.	CENT	WHEAT BACK, STRUCK THRU CLOTH?? NEAT	AU	MB	\$45.00
* 405 1962	CENT	LARGE RAGGED EDGE CLIP?BLOW HOLE INTO FOREHEAD SUPER NEAT RED/BRN	BU	MB	\$45.00
406 1970 S	CENT	OVER POLISHED DIE NO SHOULDER	BU	MB	\$0.50
407 1952	CENT	CRACKED SKULL DIE BREAK	AU	MB	\$0.50
408 1955	CENT	CRACKED SKULL DIE BREAK	VF	MB	\$0.50
* 409 1944	CENT	CUD OBV 7:00 LC-44-6	VF	MB	\$10.00
410 1977	CENT	LARGE OBV CUD 10:00 TO 12:00 LC-77-8	UNC	MB	\$45.00
411 1999	CENT	HUGE CUD REVERSE 5:00 LC-99-3RB	BU	MB	\$235.00
412 1970 S	CENT	LAMINATION LIKE RETAINED CUD OBV AT DATE AREA WOW	PRF	MB	\$10.00
413 1924 D	CENT	PART COLL WITH FLANGED RIM OBV RAR DATE	VG	MB	\$55.00
414 1944	CENT	TILTED PARTIAL COLLAR	BU	MB	\$8.00
415 1945	CENT	LEVEL PARTIAL COLLAR	BU	MB	\$8.00
416 1972 D	CENT	PARTIAL COLLAR	UNC	MB	\$2.00
417 1983	CENT	TILTED PARTIAL COLLAR	BU	MB	\$1.50
418 1999	CENT	FLANGED PARTIAL COLLAR HIGH OBV RIM	UNC	MB	\$4.00
419 1972	CENT	UNCENTERED BROADSTRIKE LOOKS 10% O/C	UNC	MB	\$8.00
420 1972	CENT	UNCENTERED BROADSTRIKE LOOKS O/C	UNC	MB	\$8.00
421 1970 D	CENT	2% MISALIGNED DIE OBTVERSE	AU	MB	\$0.50

422	1996	CENT	ZINC, HEAVY FILLED DIES OVER DATE AREA	UNC	MB	\$1.00	
423	1990	CENT	GREASE FILLED DIE OBV AROUND EDGE	BU	MB	\$0.50	
424	1975 D	CENT	25% PARTIAL BROCKAGE 7:30	UNC	MB	\$15.00	
425	1968 D	CENT	OBV MISALIGNED DIE 5% SPOT OBV	UNC	MB	\$1.00	
426	1966	CENT	8% MISALIGNED DIE OBV TOWARDS 34:00	AU	MB	\$2.50	
427	1983	CENT	BUBBLED SURFACES + BRASS COLORED PLATING	UNC	MB	\$4.00	
428	1988 D	CENT	BUBBLED COPPER COATING OBV & REV	BU	MB	\$0.50	
429	1976 D	CENT	POLISHED DIES MISSING HALF OF BOW TIE	UNC	MB	\$1.00	
430	1964 D	CENT	STRUCK THRU BACK OF HEAD INTO FIELD	UNC	MB	\$2.00	
431	197X	CENT	STRUCK THRU CRUD OVER DATE AREA	UNC	MB	\$0.75	
432	198(6)	CENT	STRUCK THRU AT 6 IN DATE BLACK PEPPER SPOTS O & R	BU	MB	\$1.00	
433	N.D.	CENT	ZINC, MAJOR STRUCK THRU 50% OBVERSE	BU	MB	\$4.00	
434	1970 S	CENT	STRUCK WITH HEAVILY FILLED OBVERSE DIE	UNC	MB	\$1.50	
*	435	2004 D	CENT	TRIPLE STRUCK, 2ND 75% O/C 12:00 WITH 3RD STRIKE ON EDGE OF 2ND STRIKE RED	BU	MB	\$450.00
*	436	1924	CENT	DOUBLE STRUCK, 2ND 80% OFF CENTER 6:00 NICE EARLY GLOSSY BRN	AU+	MB	\$425.00
*	437	1978 D	CENT	DOUBLE STRK, BOTH OFF CENTER CLOSE DUBLE STRIKE 2 DATE + INDENT ON EDGE WOWSER	BU	MB	\$165.00
*	438	N.D.	CENT	ZINC, DUBL STRK, 1ST 75% O/C , 2ND 90% OFF CENTER DIE STRK BOTH SIDES NOT A SADDLE	BU	MB	\$31.00
*	439	1966	CENT	DOUBLE STRUCK, 2ND 70% OFF CENTER 12:30 UNIF REV WEIRD MESH TONING PROBABLY MULTI STRUCK	UNC	MB	\$75.00
*	440	N.D.	CENT	SADDLE STRIKE, 90% O/C UNIFACE + 90% O/C DSBS NICE HIGH HUMP	BU	MB	\$115.00
441	1968 D	CENT	DUBL STRK, 2ND 90% OFF CENTER 1:30 UNIF REV	BU	MB	\$32.00	
442	2004 D	CENT	DUBL STRK, 2ND 85% OFF CENTER 1:30 UNFACE OBV , SUPER RARE 2004D COIN	CHBU	MB	\$250.00	
*	443	N.D.	CENT	SADDLE STRIKE + 3RD STRIKE, 50% O/C DSBS, 70% O/C UNIF REV, 3RD STRIKE ON EDGE UNIF RED	UNC	MB	\$265.00
*	444	N.D.	CENT	HIGH HUMP SADDLE STRIKE WITH EDGE STRIKE "UNUM" ON EDGE OF COIN SUPER NEAT COMBO ERROR RED/BRN PICTURE WITH SLAB PICS	UNC	MB	\$350.00
445	1942	CENT	FULL BIE SCARCE DATE FOR BIE	FIN	MB	\$6.00	
446	1943 D	CENT	BIE "LIIB" SCARCE DATE 43D-3CL+1	AU	MB	\$8.00	
447	1951 D	CENT	BIE DIE BREAK	FIN	MB	\$0.50	
448	1955 D	CENT	BIE DIE BREAK	EF	MB	\$0.50	
449	1955 S	CENT	BIE DIE BREAK	VF	MB	\$0.50	
450	1956	CENT	BIE DIE BRAEK	VF	MB	\$0.50	
451	1958 D	CENT	BIE DIE BREAK SCARCE DATE LISTED 58D-4F+1 \$15.00 BOOK VALUE	EF	MB	\$6.00	
452	1958	CENT	BIE DIE BREAK LISTED 58P-5F+2 \$15.00 BOOK VALUE	BU	MB	\$7.00	
453	ASST	CENT	1960 D SMALL DATE BIE + 1956 BIE + 1957 BIE LOT OF 3 COINS	ASST	MB	\$3.00	
454	1957	CENT	BIE DIE BREAK + CRACKED SKULL	AU	MB	\$0.75	
455	ASST	CENT	LOT OF 6 MINOR ERRORS	ASST	MB	\$1.50	
456	ASST	CENT	ROLL OF 50 COINS WITH MINOR ERRORS MEMORIAL TYPE	ASST	MB	\$8.00	
457	1965	CENT	DOUBLE DOT BEFORE UNUM??	BU	MB	\$2.00	
458	1961	CENT	STRAIGHT CLIP 11:30 TO 1:30	AU	MB	\$2.00	
459	1965	CENT	RAGGED STRAIGHT CLIP 6:00 TO 7:00	EF	MB	\$3.00	
460	1966	CENT	STRAIGHT EDGE CLIP 3:00 SPOT ON LIBERTY	UNC	MB	\$2.50	
461	1967	CENT	RAGGED EDGE CLIP 9:00 TO 10:30	AU	MB	\$3.00	
*	462	1967	CENT	23% STRAIGHT CLIP 9:00 TO 1:00	UNC	MB	\$24.00
463	1914 S	CENT	NICE 2% CURVED CLIP 7:00	VG	MB	\$35.00	

464	1939	CENT	3% CURVED CLIP 1:00	EF	MB	\$1.50	
465	1941	CENT	RIM CLIPS AT 4:00 & 7:00	VF	MB	\$3.00	
466	1942	CENT	3% CURVED CLIP 6:00	FIN	MB	\$1.50	
467	1944	CENT	3% CURVED CLIP 2:00	EF	MB	\$1.50	
468	1944 S	CENT	RIM CLIP AT 1:00 R/BRN	UNC	MB	\$6.00	
469	1950 D	CENT	10% CURVED CLIP 12:30	AU	MB	\$3.50	
470	1960	CENT	2% CURVED CLIP 11:00	AU	MB	\$1.50	
471	1960	CENT	LGE DATE, 5% CURVED CLIP 12:00	AU+	MB	\$1.50	
472	1963 D	CENT	RIM CLIPS AT 4:30 & 10:30	AU	MB	\$3.00	
473	1965	CENT	5% CURVED CLIP 5:00 + RIM CLIP 2:00	BU	MB	\$4.00	
474	1965	CENT	10% CURVED CLIP 8:00	EF	MB	\$2.00	
475	1969 S	CENT	3% CURVED CLIP 7:00	UNC	MB	\$3.50	
476	1970 S	CENT	5% C. CLIP 4:00 + RIM CLIPS AT 11:00 & 1:00 R&B	UNC	MB	\$5.00	
477	1972	CENT	3% CURVED CLIP 3:30 R&B	BU	MB	\$1.50	
478	1975	CENT	RIM CLIP 2:00 SPOT OBV ON NECK	BU	MB	\$1.50	
*	479	1919	CENT	30% OFF CENTER ++ REVERSE IS A MIRROR BROCKAGE OF OBV KI9NDA WEAK OBV	FIN	MB	\$395.00
*	480	1940 S	CENT	20% OFF CENTER 7:30	BU	MB	\$199.00
481	1943	CENT	20% OFF CENTER 11:00 NICE ORIGINAL COLOR	BU	MB	\$155.00	
*	482	1943	CENT	10% OFF CENTER 4:00 TONING OBV + LITTLE TONING REV TOUCH OF CORROSION	UNC	MB	\$120.00
483	1949 D	CENT	75% OFF CENTER 10:00 FULL DATE & MINT MARK REALLY TOUGH DATE	BU	MB	\$299.00	
*	484	1949 S	CENT	20% OFF CENTER 8:00 RARE DATE	UNC	MB	\$199.00
*	485	1955	CENT	APROX 20% OFF CENTER ON 40% STRAIGHT CLIPPED PLANCHET BY WEIGHT 28.3 GRAINS	CHBU	MB	\$189.00
486	1960 D	CENT	L.D, 55% OFF CENTER 9:00	CHAU	MB	\$69.00	
487	1964	CENT	20% OFF CENTER 9:30	BU	MB	\$19.00	
488	1964	CENT	10% OFF CENTER 1:00	UNC	MB	\$18.00	
489	1969 D	CENT	45% OFF CENTER 9:00 SOME DARK TONING	AU	MB	\$12.00	
*	490	1969 S	CENT	80% OFF CENTER 10:30 NICE FULL DATE & MINT MARK DIE STRK BOTH SIDES SCARCE DATE	UNC	MB	\$350.00
*	491	1970 S	CENT	50% OFF CENTER 8:00 S MINTS SCARCE RED/BRN	UNC	MB	\$175.00
492	1976 D	CENT	50% OFF CENTER 12:00	UNC	MB	\$45.00	
493	1979 D	CENT	70% O/C 10:30 FULL DATE & MM UNIFACE REV	UNC	MB	\$18.00	
494	1981	CENT	35% OFF CENTER 12:00	UNC	MB	\$12.00	
495	1982	CENT	S.D.C, 50% OFF CENTER 8:00	BU	MB	\$49.00	
496	1982	CENT	S.D.C, 25% OFF CENTER 11:00	BU	MB	\$55.00	
497	1986 D	CENT	40% OFF CENTER 11:00	BU	MB	\$16.00	
498	1988 D	CENT	40% OFF CENTER 1:00	BU	MB	\$16.00	
499	1989 D	CENT	50% OFF CENTER 12:00	BU	MB	\$16.00	
500	198X	CENT	45% OFF CENTER 1:00	BU	MB	\$4.00	
501	1996 D	CENT	60% OFF CENTER 8:30	BU	MB	\$16.00	
502	199(8)	CENT	15% OFF CENTER 3:00	BU	MB	\$4.00	
503	2007 D	CENT	15% OFF CENTER 4:00 RED	BU	MB	\$125.00	
504	2003	CENT	10% OFF CENTER 7:00	BU	MB	\$15.00	
505	N.D.	CENT	ZINC, 40% OFF CENTER 1:30	BU	MB	\$5.00	
506	N.D.	CENT	ZINC, 55% OFF CENTER 1:30	BU	MB	\$4.00	
507	N.D.	CENT	COPPER, 55% OFF CENTER 6:00 TONED DARKISH	AU	MB	\$3.00	
508	1XXX	CENT	COPPER, 55% OFF CENTER 1:00	BU	MB	\$4.50	
509	N.D.	CENT	COPPER, 60% OFF CENTER 2:30	UNC	MB	\$4.00	
510	N.D.	CENT	COPPER, 65% OFF CENTER 4:00 4:00 WITH NICE CHAIN STRIKE EDGE	UNC	MB	\$6.00	
511	N.D.	CENT	COPPER, 65% O/C 1:00 CUPPED UP EDGE	UNC	MB	\$8.00	
512	N.D.	CENT	COPPER, 65% OFF CENTER 1:30	BU	MB	\$4.00	
513	N.D.	CENT	COPPER, 65% O/C 3:00 SKID ON BLANK AREA	BU	MB	\$3.00	
514	N.D.	CENT	ZINC, 90% OFF CENTER 1:00 DSBS	BU	MB	\$2.50	
515	N.D.	CENT	COPPER, 95% OFF CENTER 8:00 DSBS	UNC	MB	\$2.50	

516	1955	CENT	POORMANS DOUBLED DIE	BU	MB	\$1.50
517	1910 S	CENT	RPM #1 SOME LITE CORROSION	VG	MB	\$7.00
518	1928 S	CENT	RPM #1 REPUNCHED MINT MARK	FIN	MB	\$6.00
519	1934 D	CENT	RPM #1	VG	MB	\$2.00
520	1934 D	CENT	RPM #2	GD	MB	\$1.75
521	1934 D	CENT	RPM #3	VF	MB	\$6.00
522	1938 D	CENT	RPM #2 + DDR 1-R-VI	FIN	MB	\$2.75
523	1938 S	CENT	RPM #2 STAGE B FS-01-1938S-502	FIN	MB	\$2.00
524	1938 S	CENT	RPM #2 STAGE D FS-01-1938S-502	FIN	MB	\$2.00
525	1939 D	CENT	RPM #1	FIN	MB	\$2.00
526	1939 S	CENT	RPM #1	VG	MB	\$2.00
527	1944 D	CENT	RPM #1	FIN+	MB	\$2.50
528	1944 D	CENT	RPM #2 + DUBL DIE REV -4-R-VI + DDO-4---0-III	FIN+	MB	\$2.75
529	1944 D	CENT	RPM #7	FIN	MB	\$1.75
530	1944 S	CENT	RPM #3	FIN	MB	\$1.75
531	1945 D	CENT	RPM #3	FIN	MB	\$1.75
532	1945 D	CENT	RPM #4	VF	MB	\$2.25
533	1945 D	CENT	RPM #6	FIN	MB	\$2.00
534	1950 S	CENT	RPM #2	FIN	MB	\$2.00
535	1950 S	CENT	RPM #3	FIN	MB	\$1.75
536	1950 S	CENT	RPM #4 FS-01-190S-501	VF	MB	\$2.50
537	1950 S	CENT	RPM #5	VF	MB	\$2.25
538	1951 D	CENT	RPM #1	FIN	MB	\$1.75
539	1951 D	CENT	RPM #8	VF	MB	\$2.00
540	1951 D	CENT	W D MM FS#1c-021-51 DIE BREAK IN 5	FIN	MB	\$5.00
541	1951 D	CENT	D OVER S OMM FS-01-1951 D-502	VF	MB	\$17.50
542	1951 S	CENT	RPM #3	VF	MB	\$2.00
543	1952 D	CENT	RPM #5 WRPM #016	VF	MB	\$13.00
544	1952 S	CENT	RPM #17	VG	MB	\$1.50
545	1953 D	CENT	RPM #1 EDS FS-01-1953D-501	EF	MB	\$5.00
546	1953 S	CENT	RPM #1	FIN	MB	\$2.00
547	1953 S	CENT	RPM #3	FIN	MB	\$1.75
548	1953 S	CENT	RPM #6	VF	MB	\$1.75
549	1953 S	CENT	RPM #13	VF	MB	\$2.00
550	1953 S	CENT	RPM #17 STAGE F RED	UNC	MB	\$4.25
551	1954 D	CENT	RPM #1 FS-01-1954D-501	VF	MB	\$3.50
552	1954 S	CENT	RPM #4	VF+	MB	\$2.25
553	1955 D	CENT	RPM #2	VF+	MB	\$2.25
554	1955 D	CENT	RPM #11	EF	MB	\$3.25
555	1955 S	CENT	RPM #2	AU	MB	\$3.50
556	1956 D	CENT	RPM #1 FS-01-1956D-502	VF	MB	\$2.50
557	1956 D	CENT	RPM #4	VF	MB	\$2.00
558	1956 D	CENT	RPM #8 FS#1c-022	FIN	MB	\$22.50
559	1957 D	CENT	RPM #5 DDD 2-0-III+V	VF	MB	\$3.00
560	1957 D	CENT	RPM #6	FIN	MB	\$1.75
561	1957 D	CENT	RPM #13	EF	MB	\$2.75
562	1958 D	CENT	RPM #7	UNC	MB	\$4.00
563	1958 D	CENT	RPM #17	FIN	MB	\$2.00
564	1959 D	CENT	RPM #1	EF	MB	\$3.00
565	1959 D	CENT	RPM #3	VF	MB	\$2.00
566	1959 D	CENT	RPM #6	BU	MB	\$4.00
567	1959 D	CENT	RPM #6	EF	MB	\$2.75
568	1959 D	CENT	RPM #17	VF	MB	\$2.00
569	1960 D	CENT	RPM #6	VF	MB	\$2.00
570	1960 D	CENT	RPM #11	AU	MB	\$3.00
571	1960 D	CENT	RPM #23	VF	MB	\$2.25
572	1960 D	CENT	RPM #24	VF	MB	\$2.00

573	1960 D	CENT	RPM #26	EF	MB	\$2.50
574	1960 D	CENT	RPM #33	AU	MB	\$3.00
575	1960 D	CENT	RPM #35 STAGE A	BU	MB	\$3.25
576	1960 D	CENT	RPM #38	EF	MB	\$2.50
577	1960 D	CENT	RPM #60	EF	MB	\$2.50
578	1960 D	CENT	RPM #84 STAGE B	UNC	MB	\$3.00
579	1960 D	CENT	RPM #107 STAGE B	AU	MB	\$2.00
580	1960 D	CENT	RPM #110 STAGEA/B	BU	MB	\$2.25
581	1961 D	CENT	RPM #1 STAGE D FS-01-1961D-501	BU	MB	\$15.00
582	1961 D	CENT	RPM #2	AU	MB	\$2.75
583	1964 D	CENT	RPM #3	VF	MB	\$2.00
584	1961 D	CENT	RPM #4 STAGE D	BU	MB	\$2.00
585	1961 D	CENT	RPM #21	BU	MB	\$3.00
586	1961 D	CENT	RPM #33 STAGE C	AU	MB	\$2.50
587	1961 D	CENT	RPM #38	VF	MB	\$2.00
588	1962 D	CENT	RPM #15	BU	MB	\$3.00
589	1964 D	CENT	RPM #3	VF	MB	\$2.00
590	1964 D	CENT	RPM #7	UNC	MB	\$2.75
591	1964 D	CENT	RPM #8	BU	MB	\$3.00
592	1964 D	CENT	RPM #9	EF	MB	\$2.00
593	1964 D	CENT	RPM #12	AU	MB	\$3.00
594	1968 D	CENT	RPM #1 FS-01-1968D-501	AU	MB	\$5.00
595	197(4)	CENT	50% OFF CENTER 12:30	BU	MB	\$6.00
596	1909VDB	CENT	DEFECTIVE PLANCHET REV RIM TO E OF ONE	FIN	MB	\$9.00
597	1914	CENT	LAMINATION OBV 3:00 ONTO COAT	VF	MB	\$1.50
598	1915 D	CENT	LAMINATION OBV 9:00 TO 12:00	GD	MB	\$3.50
599	1916	CENT	ATTACHED LAMINATION EDGE REV 7:00	BU	MB	\$18.00
600	1918	CENT	LAMINATION OFF EDGE 1:00 TO 3:30	FIN	MB	\$2.50
601	1919	CENT	DEEP & WIDE LAMINATION OBV 12:00 TO 6:00	FIN	MB	\$3.50
602	1921 S	CENT	LAMINATION REV 7:30 TO 10:30	VF	MB	\$2.00
603	1928 S	CENT	LAAMINATION ACROSS HEAD & INTO FIELD OBV	FIN	MB	\$0.50
604	1929	CENT	REALLY BAD METAL MIX IN PLANCHET	FIN	MB	\$2.50
605	1929 S	CENT	LAMINATION OBV 10:00	FIN	MB	\$0.50
606	1930	CENT	LAMINATION OBV 3:00 TO CHIN	FIN	MB	\$0.75
607	1931	CENT	LAMINATION FLAKE REV 1:30 CLEANED	EF	MB	\$0.50
608	1932 D	CENT	LAM OBV 12:00 TO HEAD SOME GONE SOME THER	FIN	MB	\$2.00
609	1934	CENT	LAMINATION OFF SHOULDER OBV	UNC	MB	\$2.00
610	1938	CENT	LAMINATION OBV 3:00 TO 9:00 1/4 INCH WIDE	VG	MB	\$1.00
611	1940 D	CENT	LAMINATION STREAKS 5:00 TO 10:30 OBV	VF	MB	\$0.75
612	1941	CENT	BROKEN OFF LAMINATION 1:00 TO 5:00 2 PIECES INCLUDED NEAT	EF	MB	\$18.00
613	1942 S	CENT	LAMINATION REV 10:30 TO 12:00	VF	MB	\$0.50
614	1944	CENT	LAMINATION OBV 3:00 TO 10:30	VF	MB	\$0.50
615	1944 S	CENT	ATTACHED LAM AT 2:00 OBV & STRUCK DOWN	UNC	MB	\$0.50
616	1944 S	CENT	LAMINATION AT DATE	BU	MB	\$1.00
617	1945 S	CENT	LAMINATION REV AT 5:00	FIN	MB	\$0.50
618	1946	CENT	LAMINATIONS OBV & REV	BU	MB	\$2.00
619	1947 S	CENT	2 LAMINATION STREAKS ACROSS OBV RIM TO RIM	VF	MB	\$0.50
620	1948 S	CENT	LAMINATION STREAK 12:00 TO 3:30	FIN	MB	\$0.75
621	1949	CENT	MAJOR LAMINATION OBV DATE AREA ++	VG	MB	\$4.00
622	1961 D	CENT	LAMINATION REV 1:00 TO 3:30	EF	MB	\$0.50
623	1960	CENT	LAMINATION OBV 1:30 TO 9:30	VF	MB	\$0.50
624	1950 D	CENT	LAMINATION OBV 5:00 TO 9:00	VF	MB	\$0.50
625	1952 S	CENT	LAMINATION 1:00 DOWN ACROSS FACE	VF	MB	\$0.50
626	1954 S	CENT	LAMINATION OBV 12:00 TO 6:00	BU	MB	\$1.50
627	1955	CENT	LAMINATION REV 8:00 TO 9:00	BU	MB	\$0.50



628	1958	CENT	LIGHT LAMINATION OBVERSE	BU	MB	\$0.50
629	1958 D	CENT	REV LAMINATION OUT AT 9:00	VF	MB	\$0.50
630	1961 D	CENT	DEEP LAMINATION 3/16" WIDE 8:00 TO 12:00	FIN	MB	\$0.50
631	1962	CENT	LAMINATION STREAK 3:30 TO 10:00	BU	MB	\$0.50
632	1967	CENT	LAMINATION CRACKS & FLAP OBV	EF	MB	\$1.00
633	1971 D	CENT	LARGE LAMINATION FLAKE ON BUILDING STEPS	AU	MB	\$4.50
634	1972 D	CENT	DEEP LAMINATION OUT 10:00 OBV	UNC	MB	\$1.50
635	1974 D	CENT	LAMINATION OBV EDGE 1:00	BU	MB	\$0.50
636	1984	CENT	LAM OFF ACROSS COAT COLLAR RARE ON ZINC	AU	MB	\$3.00
637	1983 D	CENT	LAMINATION OF COPPER SCARCE ON ZINC	BU	MB	\$3.00
638	ASST	CENT	5 LAMINATED CENTS	ASST	MB	\$1.95
639	N.D.	OTHER	RED OPA WORLD WAR 2 TOKEN DOUBLE STRUCK, 2ND 35% OFF CENTER 12:00	UNC	MB	\$22.00
640	N.D.	OTHER	RED OPA TOKEN WITH 2 OFF CENTER STRIKES + 2 CURVED CLIPS NEAT	UNC	MB	\$22.00
641	N.D.	OTHER	CANTON CITY LINES BUS TOKEN WITH MISPUNCHED HOLES NOT IN CENTER	EF	MB	\$7.00
642	N.D.	OTHER	DOUBLE STRUCK CAR WASH TOKEN, 2ND 65% OFF CENTER 3:00 DSBS	BU	MB	\$18.00
* 643	N.D.	OTHER	BRASS HALF\$ SIZE BROADSTRUCK, THEN DUBL STRK 60% O/C + 60% PARTIAL BROCKAGEWOW!!	BU	MB	\$28.00
644	N.D.	OTHER	ANCIENT BYSANTINE FLIPOVER DOUBLE STRUCK, VG ALMOST HALF SIZE COPPER		MB	\$85.00
645	292AD	OTHER	WESTERN USATRAPAS VISVASENA, FULL MIRROR FIN BROCKAGE 3cSILVER SIZE THICK SILVER COIN		MB	\$45.00
646	55BC	OTHER	ROMAN REPUBLIC, REV: VEILED HEAD OF CONCORD, REV: MIRROR BROCKAGE	FIN	MB	\$85.00
647	-1930	OTHER	AFGANISTAN SILVER (25c SIZE) 1 AFGHANI, FLIPOVER DOUBLE STRUCK	VF	MB	\$45.00
648	1948	OTHER	ARGENTINA 10c, STRUCK 15% OFF CENTER ++ CRACK THRU PLANCHET 1:30 HALF ACROSS COIN	AU	MB	\$45.00
649	1948	OTHER	ARGENTINA 5c, 15% OFF CENTER 2:00	AU	MB	\$32.00
650	N.D.	OTHER	AUSTRIA 1 EURO, TYPE 2 PLANCHET WITH PLAIN EDGE IT IS A BI-METAL COIN	BU	MB	\$30.00
651	N.D.	OTHER	AUSTRIA 2 EUROS, TYPE 2 PLANCHET WITH LETTERED EDGE	BU	MB	\$40.00
652	1829 R	OTHER	BRAZIL 20r, 5% OFF CENTER	VF	MB	\$35.00
653	1828	OTHER	BRAZIL 40r, STRUCK 15% OFF CENTER 8:00 DOLLAR SIZE COPPER	EF	MB	\$45.00
654	1972	OTHER	BRAZIL 20 CRUZEIROS, STRUCK IN RETAINED STAPLE PIECE EDGE 6:00 OBV ON PROOF	PRF	MB	\$55.00
655	1951	OTHER	BURGARIA 1 STOTINKI, DOUBLED DIE OBVERSE	BU	MB	\$2.50
656	1964	CENT	CANADA, LARGE RAGGED EDGE CLIP 7:30 TO 9:30 INTO 1 OF DATE	BU	MB	\$21.00
657	1959	CENT	CANADA, 5% CURVED CLIP 11:00	BU	MB	\$2.00
658	1961	CENT	CANADA, 5% CURVED CLIP 9:00	BU	MB	\$1.50
659	1961	CENT	CANADA, 5% CURVED CLIP[ 7:00	UNC	MB	\$1.50
660	1908	CENT	CANADA LGE CENT, TAPERED EDGE CLIP 10:00	VG	MB	\$3.50
661	1947	OTHER	COSTA RICA 10c, FULL MIRROR BROCKAGE	EF	MB	\$95.00
662	N.D.	OTHER	CHINA CASH COIN WITH MAJOR OBV & REV CUDS	FIN	MB	\$55.00
663	N.D.	OTHER	TYPE 2 COPPER LOOKS LIKE CHINA 20 CASH COIN SIZE 211.1 GRAINS	EF	MB	\$12.00
664	N.D.	OTHER	HINAN CHINA 20 CASH COPPER, OBV CUD 12:00 + 5% O/C TOO + MAJOR TAPERED PLANCHET	FIN	MB	\$35.00
665	N.D.	OTHER	REPUBLIC OF CHINA 10 CASH, CRACKED PLANCHET 2:00 TO 8:00 ALMSO IN 2 PIECES	FIN	MB	\$17.00
666	1917	OTHER	CHINA 20 CASH, 70% OFF CENTER + LARGE ROLLED IN SLAG ON OBV BLANK + SMALL ON REV	VG	MB	\$45.00
667	1917	OTHER	CHINA 20 CASH, BROADSTRUCK HUPOO	EF	MB	\$24.00
668	-1905	OTHER	HUNAN CHINA 20 CASH, 15% OFF CENTER	FIN	MB	\$22.00

## LARGER THAN HALF \$ SIZE COPPER

669	1967	CENT	GREAT BRITAIN PENNY, 5% STRAIGHT CLIP 1:00	BU	MB	\$15.00
670	2005	OTHER	ENGLAND 5 PENCE, STRUCK WITH BROKEN COLLAR WITH 1/4" LONG CUD ON OUTER EDGE	BU	MB	\$25.00
671	2006	OTHER	ENGLAND 2 PENCE STRUCK ON SMALLER COPPER PLANCHET SUPER NEAT	BU	MB	\$105.00
672	1780 A	OTHER	FRENCH GUIANA, 2 SOUS, DOUBLE STRUCK, 1ST 15% O/C, 2ND ON CENTER	EF	MB	\$45.00
673	1918	OTHER	FRENCH NOTEGELD 20c, 3% CURVED CLIP 1:00 ++ CUDS 6:00 AREA	BU	MB	\$22.00
674	1650	OTHER	GERMAN STATE GROSCHN, FULL MIRROR BROCKAGE	EF	MB	\$125.00
675	1999	OTHER	INDIA 50 PAISA STRUCK ON 25 PAISA PLANCHET + BU DOUBLE STRUCK 2ND 75% O/C 2:00 UNIF WOW!!	BU	MB	\$150.00
676	1995	OTHER	INDIA 1 RUPEE, STRUCK ON ALUMINUM "OFF METAL" ON 50 PAISA PLANCHET + UNIFACE REV TRIAL PIECE??	UNC	MB	\$65.00
677	N.D.	OTHER	BRITISH INDIA RUPEE, MIRROR BROCKAGE OF YOUNG QUEEN BUT HAS HOLE AT TOP	VF	MB	\$45.00
678	-784	OTHER	TABRIZ, PERSIA, OFF CENTER FULL MIRROR BROCKAGE A-2313.1 DIME SIZE SILVER	FIN	MB	\$38.00
679	1902	OTHER	MALDIVES 4 LARIAT KM-40.1, DUBLE STRUCK ON CENTER + RIM CLIP	EF	MB	\$12.50
680	1956	OTHER	MEXICO CENTIME, RIM CLIP 2:00	UNC	MB	\$2.50
681	1970	OTHER	MEXICO 50c, STRUCK ON 20c PLANCHET	BU	MB	\$68.00
682	1858	OTHER	MEXICO 8 REALES, WITH BLOW HOLE THRU PLANCHET NEAR CENTER	VF	MB	\$65.00
683	1821	OTHER	NETH EAST INDIES, 1/2 STUAVER, DUBL STRUCK, 40% OFF CENTER 12:00 CLEANED	VF	MB	\$39.00
684	1771	OTHER	NETHERLANDS 2 STUIVER, DOUBLE STRUCK	FIN	MB	\$68.00
* 685	N.D.	OTHER	PAKISTAN 5, DOUBLE STRUCK, 2ND 70% OFF CENTER 10:00 UNUIF REV	BU	MB	\$45.00
686	1907	OTHER	PANAMA MEDIO CENTAVO, DOUBLED DIE GOOD SPREAD TYPE 11	BU	MB	\$6.50
687	N.D.	OTHER	PERU UN CENTAVO, STRUCK 45% O/C 5:00 (1986)	UNC	MB	\$15.00
688	1960	OTHER	PERU 5 CENTAVO, HEAVY DIE CRACK 5:00 ACROSS BUST	AU	MB	\$2.00
689	1937	OTHER	PHILIPPINES 20c, RETAINED CUD 12:00 OBV	UNC	MB	\$12.00
690	1964	OTHER	RHODISIA&NYLAND HALF PENNY, CENTER HOLE PUNCHED WAY OFF CENTER	UNC	MB	\$65.00
691	N.D.	OTHER	RUSSIA 1 KOPECK OF PETER 1, 50% OFF CENTER REVERSE BROCKAGE SMALL SILVER COIN	VF	MB	\$55.00
692	1662	OTHER	SWEDEN RIGA SHILLING, 15% OFF CENTER	EF	MB	\$45.00
693	1802	OTHER	SWEDEN 1 SKILLING, DBL STRUCK ON CENTER GREAT ROTATION BETW STRIKES \$ SIZE COPPER	EF	MB	\$95.00
694	1796	DOLL	"COPY" NORMAL STRIKE THEN STRUCK WITH STRUCK DOLLAR REV ON OBERSE SLICK	BU	MB	\$39.00
ADD ON COINS:						
695	1989-D	CENT	NGC-65RB TRANSITIONAL ERROR STRUCK ON *COPPER* PLANCHET AND DOUBLE STRUCK IN COLLAR! UNIQUE! REPORTEDLY THIS COIN SOLD TO PREVIOUS OWNER FOR FIVE FIGURES AND WAS IN AN ICG HOLDER AT THAT TIME. WITH 1944-S STEEL CENT BRINGING SIX FIGURES, THIS COIN IS A GREAT VALUE.		MB	\$2950
* 696	1983-D	NICKEL	PCGS MS-63RB STRUCK ON *COPPER* CENT PLANCET ANOTHER TRANSITIONAL ERROR		MB	\$2950
* 697	1971-D	HALF	NGC MS-63 STRUCK 70% OFF CENTER ON MEXICO 50C WOW WOW WOW!		MB	\$2950
698	2000-D	SACAGAWEA	\$1 ICG FROM MILENIUM COINAGE SET ISSUED BURNISHED. LIMITED EDITION 75,000		MB	\$30
699	2000-W	SILVER EAGLE	ICG-69 FROM MILENIUM COINAGE SET ISSUED BURNISHED. LIMITED EDITION 75,000		MB	\$50

PRICES REALIZED SALE 29 --- CLOSED 9/30/2008

12	\$395.00	115	\$4.68	R	293	\$2.00	457	\$5.00	559	\$2.47	R	655	\$1.50	750	\$17.00					
19	\$350.00	124	\$5.00		299	\$13.11	460	\$4.00	560	\$9.90	R	658	\$3.00	752	\$11.00					
24	\$950.00	125	\$5.50	R	308	\$4.00	461	\$4.00	561	\$10.00	T	660	\$6.50	754	\$16.00					
37	\$395.00	128	\$30.00		311	\$5.61	R	464	\$4.75	564	\$38.00	661	\$3.50	755	\$29.00					
45	\$175.00	129	\$22.00		312	\$9.90	R	466	\$3.75	565	\$14.00	662	\$3.64	R	756	\$7.77				
50	\$659.00	130	\$18.00		314	\$425.00		468	\$2.00	567	\$32.00	665	\$1.92	R	758	\$11.00				
51	\$425.00	131	\$15.00		319	\$2.50		469	\$5.00	569	\$35.00	666	\$1.00		759	\$17.00				
55	\$60.50	R	132	\$18.00		320	\$15.00		470	\$3.75		570	\$70.00	668	\$1.00	762	\$11.00			
64	\$169.00		133	\$15.00		322	\$2.50		473	\$3.30	R	575	\$45.00	669	\$145.00	764	\$11.00			
65	\$185.00		135	\$15.00		324	\$2.00		476	\$6.75		576	\$3.50	670	\$1.00	765	\$4.40	R		
67	\$97.50		136	\$15.00		328	\$39.60	R	485	\$3.00		577	\$5.00	671	\$2.50	766	\$4.40	R		
68	\$200.00		141	\$11.11	R	332	\$2.00		486	\$3.00		579	\$2.50	674	\$1.00	767	\$4.40	R		
70	\$125.00		169	\$51.81	R	333	\$2.00		492	\$5.50		580	\$2.50	675	\$2.00	768	\$4.40	R		
71	\$550.00		173	\$4.40	R	334	\$66.00		493	\$3.00		581	\$0.25	676	\$10.00	770	\$28.00			
72	\$625.00		174	\$4.40	R	335	\$13.20	R	494	\$3.50		582	\$3.05	R	680	\$5.50	R	778	\$5.00	
73	\$385.00	R	176	\$8.25	R	337	\$27.50	R	497	\$3.00		583	\$0.55	R	684	\$2.00		780	\$6.32	R
74	\$95.00		178	\$1.50		338	\$6.00		499	\$3.41	R	584	\$1.00	686	\$4.00	782	\$4.00			
75	\$210.00		179	\$1.50		339	\$5.00		500	\$3.00		589	\$0.50	688	\$55.00	783	\$2.75	R		
76	\$195.00		180	\$1.50		341	\$4.00		501	\$4.68	R	590	\$1.50	693	\$1.00	784	\$2.50			
77	\$32.00		182	\$8.00		345	\$4.00		502	\$3.00		593	\$6.05	R	695	\$25.00	785	\$1.50		
79	\$166.10	R	183	\$1.50		355	\$4.50		503	\$3.00		594	\$5.50	699	\$15.00	787	\$2.00			
80	\$375.00		184	\$10.00		357	\$3.00		519	\$3.00		595	\$5.00	700	\$7.50	789	\$5.00			
81	\$52.00		185	\$7.00		358	\$3.50		524	\$3.25		596	\$4.00	705	\$44.06	R	791	\$23.00		
82	\$52.00		186	\$6.00		367	\$3.50		525	\$3.00		598	\$99.00	R	708	\$129.00	794	\$1.50		
84	\$105.00		187	\$14.00		385	\$5.00		526	\$3.00		600	\$1.72	R	709	\$95.00	800	\$24.20	R	
85	\$65.00		188	\$16.00		389	\$63.80	R	527	\$3.25		605	\$35.00	711	\$15.40	R	806	\$1.50		
86	\$95.00		189	\$210.00		391	\$14.00		532	\$4.68	R	607	\$25.00	712	\$17.60	R	807	\$16.00		
87	\$500.00		194	\$25.00		393	\$40.00		533	\$3.25		608	\$1.00	718	\$24.00		809	\$3.30	R	
93	\$57.20	R	196	\$6.60	R	396	\$45.00		534	\$3.50		609	\$2.00	719	\$16.00		813	\$3.00		
94	\$44.06	R	198	\$11.00	R	397	\$55.00	R	536	\$2.50		610	\$19.00	721	\$7.32	R	816	\$4.50		
96	\$95.00		201	\$45.00		399	\$25.00		537	\$8.80	R	613	\$9.50	722	\$7.70	R	820	\$9.50		
98	\$25.00	T	209	\$150.00		405	\$45.00	T	539	\$0.50		618	\$4.00	723	\$7.00		821	\$9.50		
99	\$24.20	R	210	\$2.50		406	\$19.00		540	\$0.55	R	621	\$3.85	R	724	\$13.20	R			
100	\$23.00		211	\$4.00		408	\$22.00		541	\$0.50		623	\$2.50	725	\$8.92	R				
101	\$23.00		229	\$15.00		411	\$19.00		546	\$23.00		626	\$2.00	727	\$227.00					
102	\$21.00		249	\$55.00		426	\$22.00		547	\$4.00		627	\$2.81	R	730	\$18.00				
103	\$25.00		259	\$7.00		446	\$2.50		550	\$1.76	R	628	\$2.26	R	731	\$14.00				
104	\$25.00		260	\$8.80	R	447	\$2.50		553	\$2.00		633	\$14.00	734	\$25.00					
108	\$11.94	R	270	\$6.00		448	\$4.50		554	\$0.50		639	\$1.50	736	\$8.00	T				
111	\$12.10	R	274	\$6.66	R	449	\$16.00		555	\$0.55	R	641	\$1.50	741	\$15.00					
112	\$4.50		275	\$6.00		451	\$4.25		556	\$0.50		644	\$1.50	743	\$9.00					
113	\$14.00		276	\$4.00		452	\$23.00		557	\$1.00		648	\$10.00	744	\$11.00					
114	\$3.00		279	\$8.00		453	\$4.25		558	\$0.50		650	\$4.50	746	\$17.00					
												654	\$2.00	747	\$11.00					

THATS IT FOR THIS SALE. THANKS TO ALL THAT JOINED IN ON THIS ONE.  
 R = PRICE REDUCED FROM BID. T = TIE BIDS RECEIVED FIRST POST MARK WINS.  
 UNSOLD LOTS MAY BE PURCHASED FOR MINIMUM BID OR EST PRICE WITHIN NEXT 2 WEEKS.  
 THANKS AGAIN TO ALL OF YOU. - LEN ROOSMALEN



**9. 1998 \$1 CAP-LIKE STRIKE NGC-68!**



**697. 1971-D HALF Strk o/c on MEXICAN 50c plan!**

**JIM'S C&S**